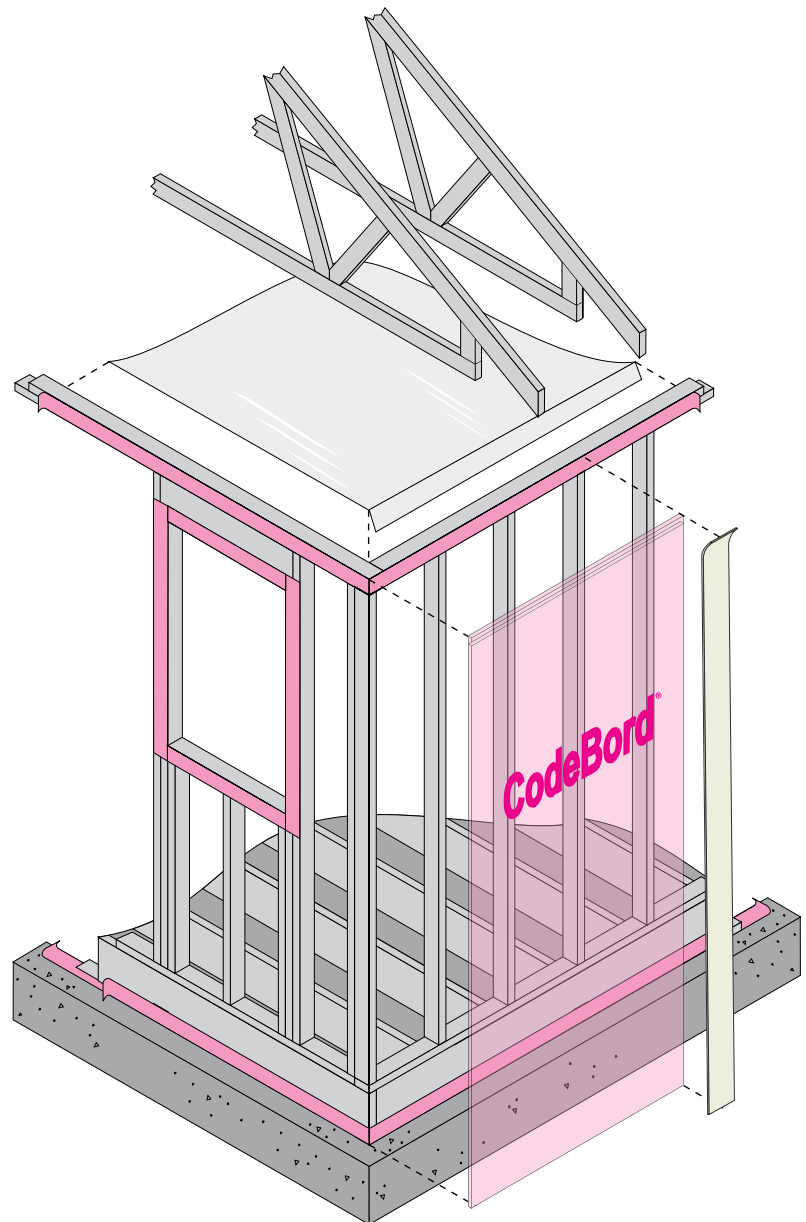


FOAMULAR® CodeBord® Air Barrier System



SYSTEM BENEFITS:

- › Primary air barrier placed on the exterior of the building envelope
- › Delivers air tightness levels of 1.5 ACH at the framing stage and less than 1.0 ACH at the pre-delivery stage
- › Insulates the exterior of the building envelope, which prevents thermal bridging from occurring and increases effective R-value of the wall assembly
- › Helps keep the wall cavity warm which significantly reduces the risk of condensation
- › Foamular® CodeBord® is an effective weather barrier, no need for house wraps

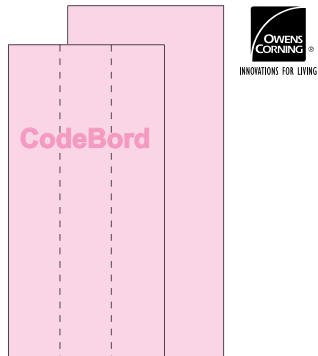


®

The Ultimate **PINK™** Thermal Wall

INNOVATIONS FOR LIVING®

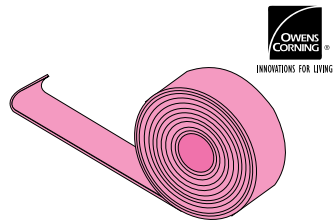
SYSTEM COMPONENTS



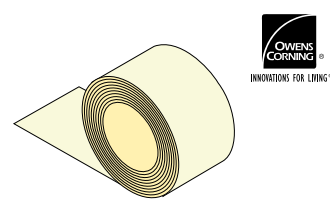
FOAMULAR® CodeBord®
Extruded Polystyrene Rigid
Insulation (4' x 8' or 4' x 9')
with shiplap edges



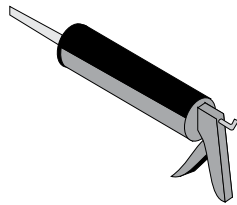
EcoTouch® PINK™
Fiberglas® Thermal Batt
Insulation (R-12, R-14,
R-19/20, R-22, or R-24)



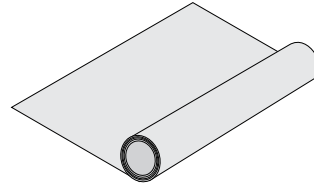
FoamSealR™ Polyethylene
Gaskets (3-1/2" or 5-1/2")



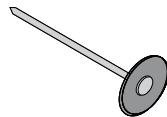
JointSealR™ Foam Joint Tape
(3.5" x 90') and
FlashSealR™ Foam Flashing
Tape (4", 6" or 9" x 75')



Caulking Sealant

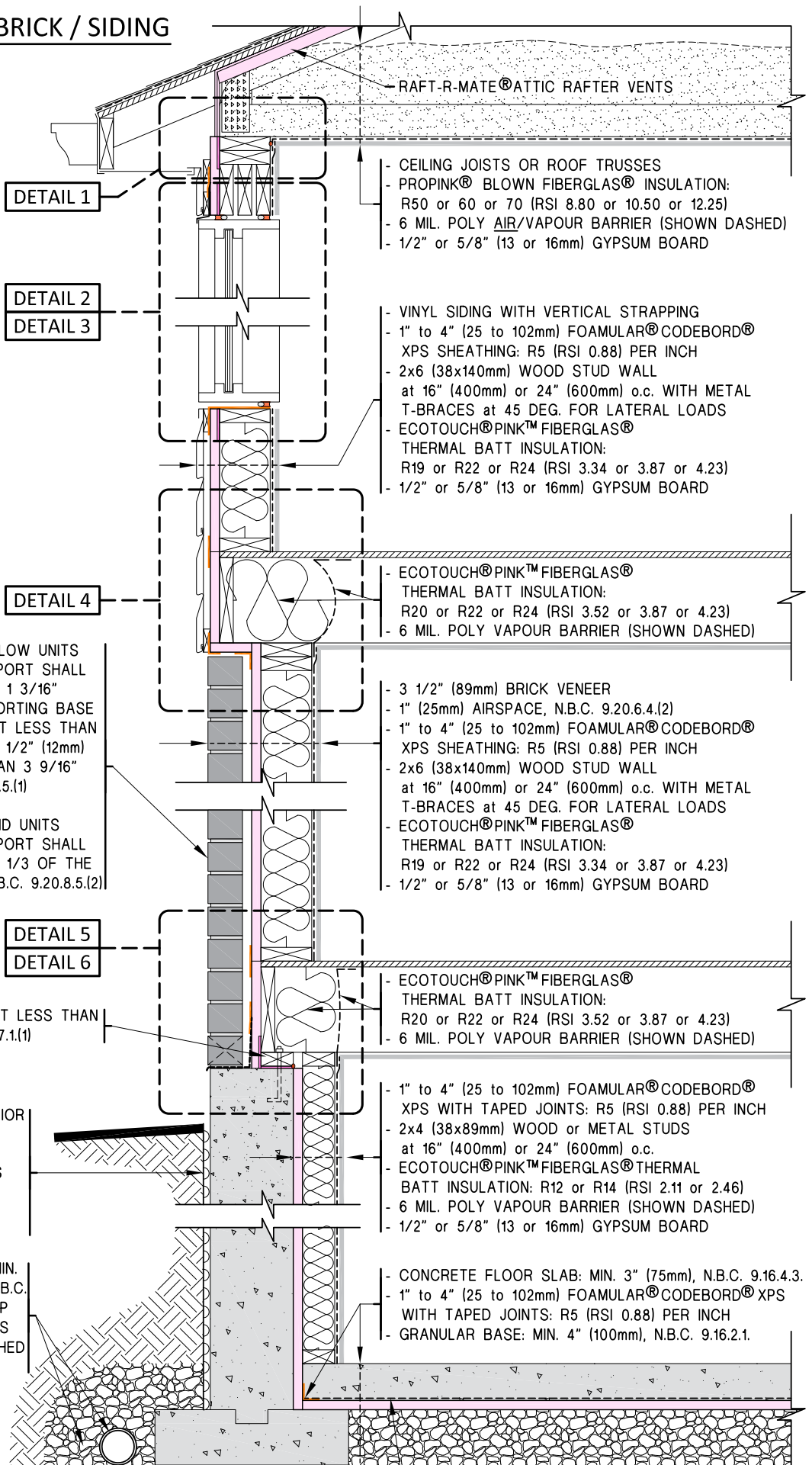


Polyethylene Vapour Barrier
(air barrier for ceiling application)



Nails with Plastic or Metal Washers

TYPICAL WALL - BRICK / SIDING



- RAFT-R-MATE® ATTIC RAFTER VENTS
- CEILING JOISTS OR ROOF TRUSSES
- PROPINK® BLOWN FIBERGLAS® INSULATION: R50 or 60 or 70 (RSI 8.80 or 10.50 or 12.25)
- 6 MIL. POLY AIR/VAPOUR BARRIER (SHOWN DASHED)
- 1/2" or 5/8" (13 or 16mm) GYPSUM BOARD

- VINYL SIDING WITH VERTICAL STRAPPING
- 1" to 4" (25 to 102mm) FOAMULAR® CODEBORD® XPS SHEATHING: R5 (RSI 0.88) PER INCH
- 2x6 (38x140mm) WOOD STUD WALL at 16" (400mm) or 24" (600mm) o.c. WITH METAL T-BRACES at 45 DEG. FOR LATERAL LOADS
- ECOTOUCH® PINK™ FIBERGLAS® THERMAL BATT INSULATION: R19 or R22 or R24 (RSI 3.34 or 3.87 or 4.23)
- 1/2" or 5/8" (13 or 16mm) GYPSUM BOARD

- ECOTOUCH® PINK™ FIBERGLAS® THERMAL BATT INSULATION: R20 or R22 or R24 (RSI 3.52 or 3.87 or 4.23)
- 6 MIL. POLY VAPOUR BARRIER (SHOWN DASHED)

- 3 1/2" (89mm) BRICK VENEER
- 1" (25mm) AIRSPACE, N.B.C. 9.20.6.4.(2)
- 1" to 4" (25 to 102mm) FOAMULAR® CODEBORD® XPS SHEATHING: R5 (RSI 0.88) PER INCH
- 2x6 (38x140mm) WOOD STUD WALL at 16" (400mm) or 24" (600mm) o.c. WITH METAL T-BRACES at 45 DEG. FOR LATERAL LOADS
- ECOTOUCH® PINK™ FIBERGLAS® THERMAL BATT INSULATION: R19 or R22 or R24 (RSI 3.34 or 3.87 or 4.23)
- 1/2" or 5/8" (13 or 16mm) GYPSUM BOARD

- ECOTOUCH® PINK™ FIBERGLAS® THERMAL BATT INSULATION: R20 or R22 or R24 (RSI 3.52 or 3.87 or 4.23)
- 6 MIL. POLY VAPOUR BARRIER (SHOWN DASHED)

- 1" to 4" (25 to 102mm) FOAMULAR® CODEBORD® XPS WITH TAPED JOINTS: R5 (RSI 0.88) PER INCH
- 2x4 (38x89mm) WOOD or METAL STUDS at 16" (400mm) or 24" (600mm) o.c.
- ECOTOUCH® PINK™ FIBERGLAS® THERMAL BATT INSULATION: R12 or R14 (RSI 2.11 or 2.46)
- 6 MIL. POLY VAPOUR BARRIER (SHOWN DASHED)
- 1/2" or 5/8" (13 or 16mm) GYPSUM BOARD

- CONCRETE FLOOR SLAB: MIN. 3" (75mm), N.B.C. 9.16.4.3.
- 1" to 4" (25 to 102mm) FOAMULAR® CODEBORD® XPS WITH TAPED JOINTS: R5 (RSI 0.88) PER INCH
- GRANULAR BASE: MIN. 4" (100mm), N.B.C. 9.16.2.1.

MASONRY VENEER OF HOLLOW UNITS RESTING ON BEARING SUPPORT SHALL NOT PROJECT MORE THAN 1 3/16" (30mm) BEYOND THE SUPPORTING BASE WHERE THE VENEER IS NOT LESS THAN 3 9/16" (90mm) THICK AND 1/2" (12mm) WHEN VENEER IS LESS THAN 3 9/16" (90mm) THICK, N.B.C. 9.20.8.5.(1)

MASONRY VENEER OF SOLID UNITS RESTING ON BEARING SUPPORT SHALL NOT PROJECT MORE THAN 1/3 OF THE WIDTH OF THE VENEER, N.B.C. 9.20.8.5.(2)

SILL PLATES SHALL BE NOT LESS THAN 2x4 (38x89mm), N.B.C. 9.23.7.1.(1)

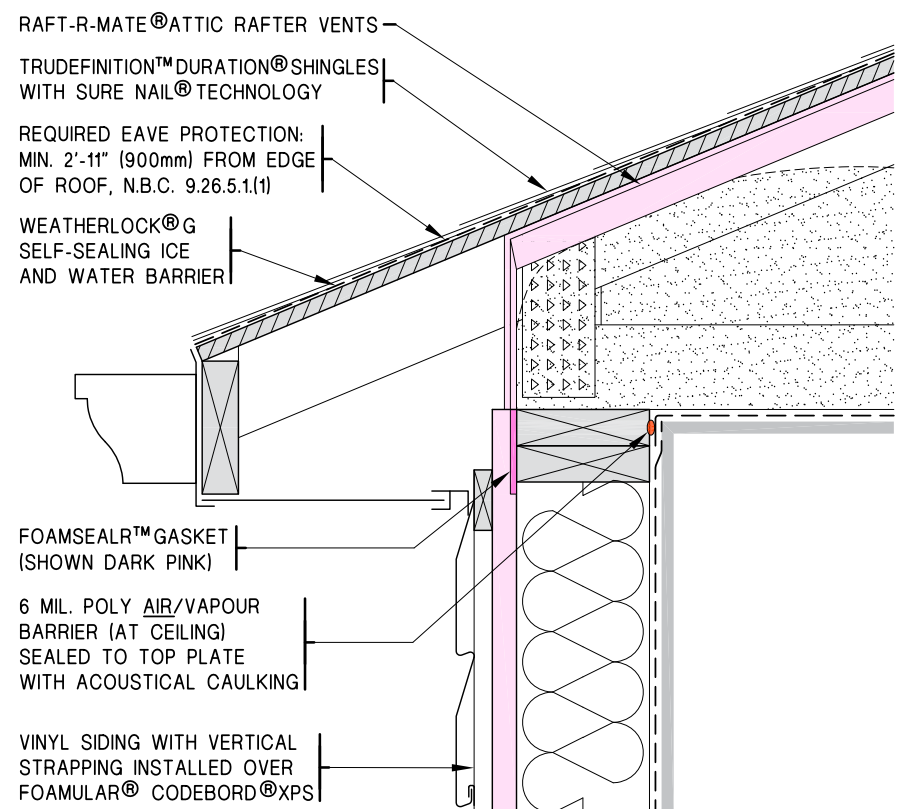
DAMP-PROOFING AT EXTERIOR FOUNDATION WALL BELOW GRADE, WHERE EXTERIOR FINISHED GROUND LEVEL IS AT A HIGHER ELEVATION THAN THE GROUND LEVEL INSIDE, N.B.C. 9.13.2.1.

REQUIRED WEeping TILE: MIN. 4" (100mm) IN DIAMETER, N.B.C. 9.14.3.2. AND COVERED (TOP AND SIDES) WITH NOT LESS THAN 6" (150mm) OF CRUSHED STONE, N.B.C. 9.14.3.3.(4)

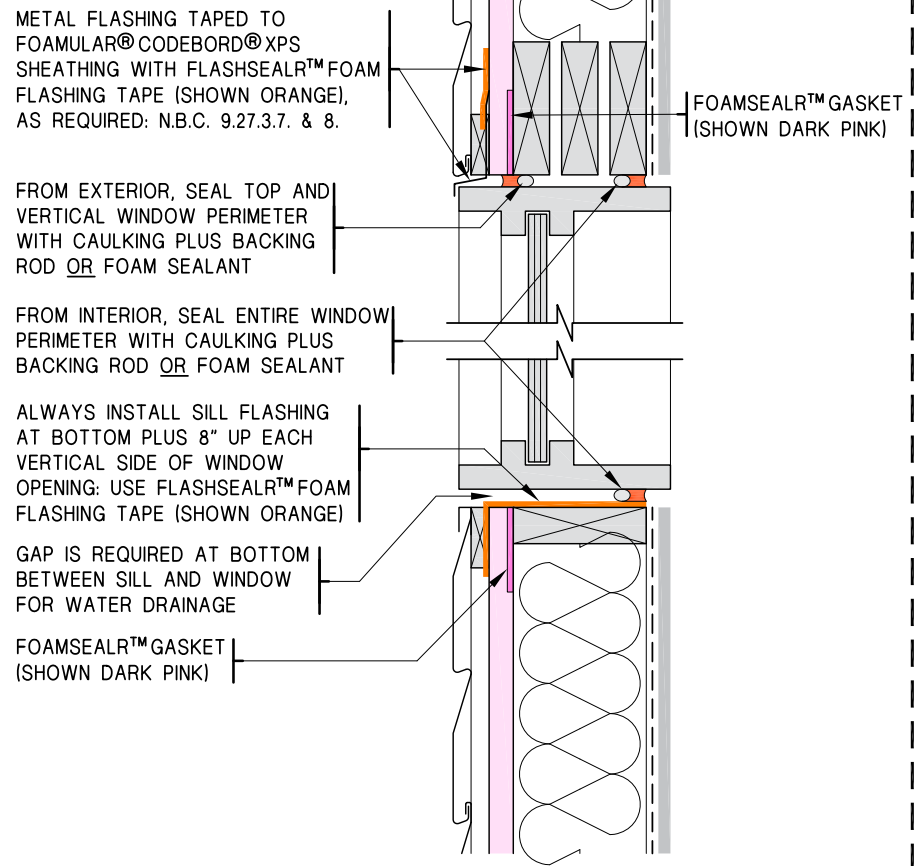
CONSULT LOCAL BUILDING OFFICIAL REGARDING REQUIREMENT OF POLY VAPOUR BARRIER UNDERNEATH CONCRETE FLOOR SLAB.

HYBRID:

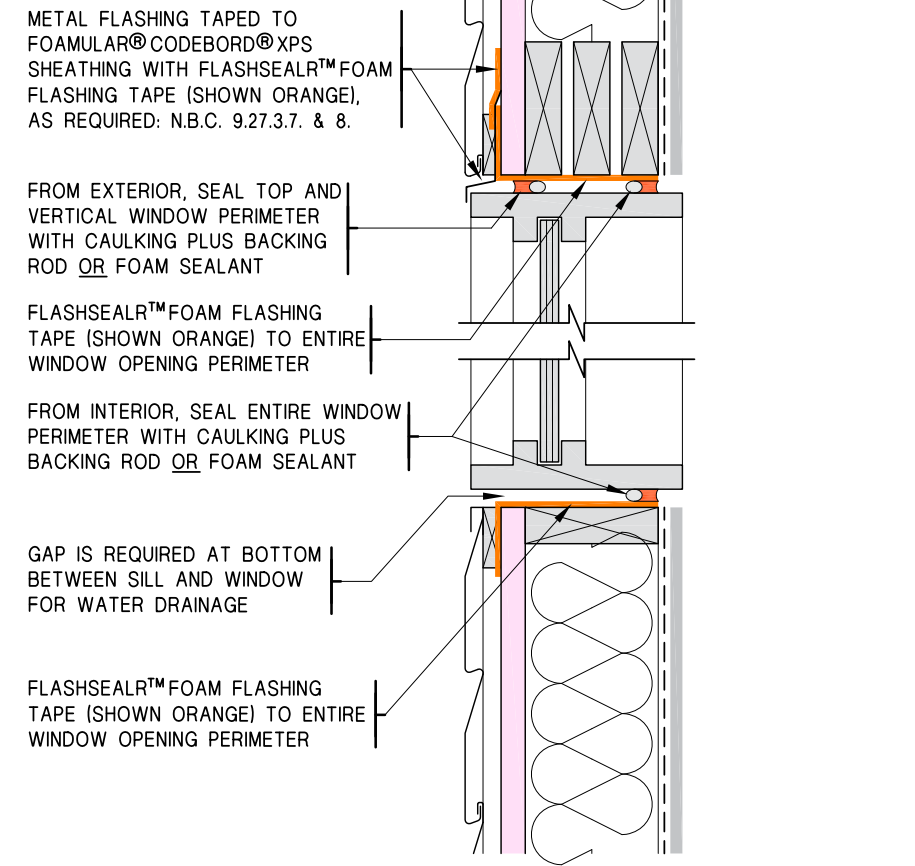
DETAIL 1 (Exterior Wall to Ceiling Connection)



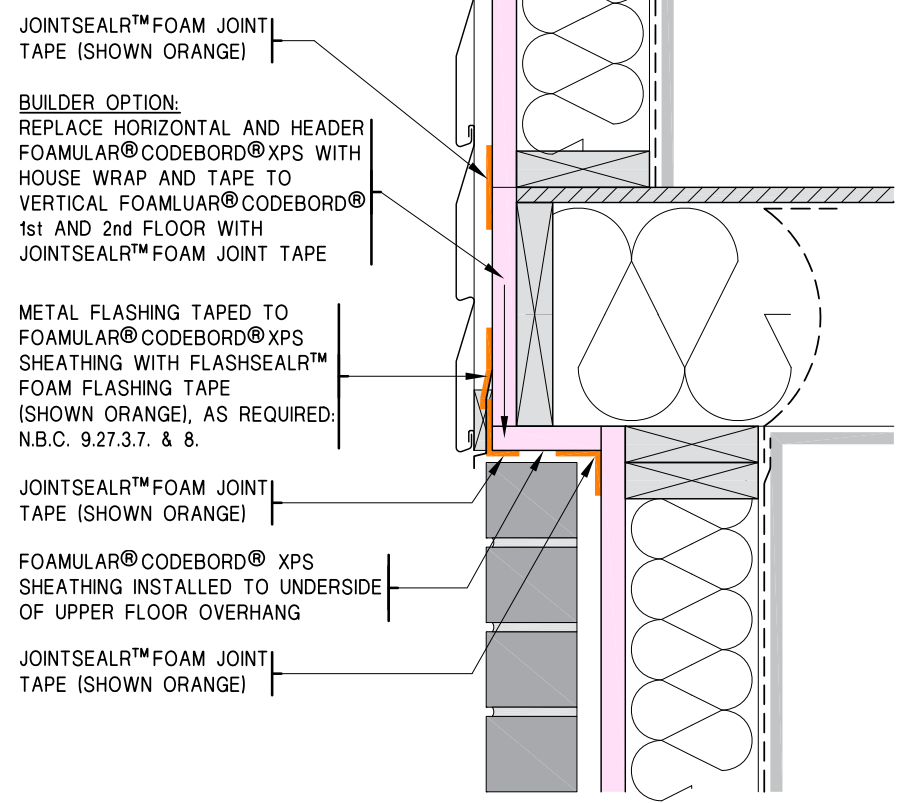
DETAIL 2 (Window 1a)



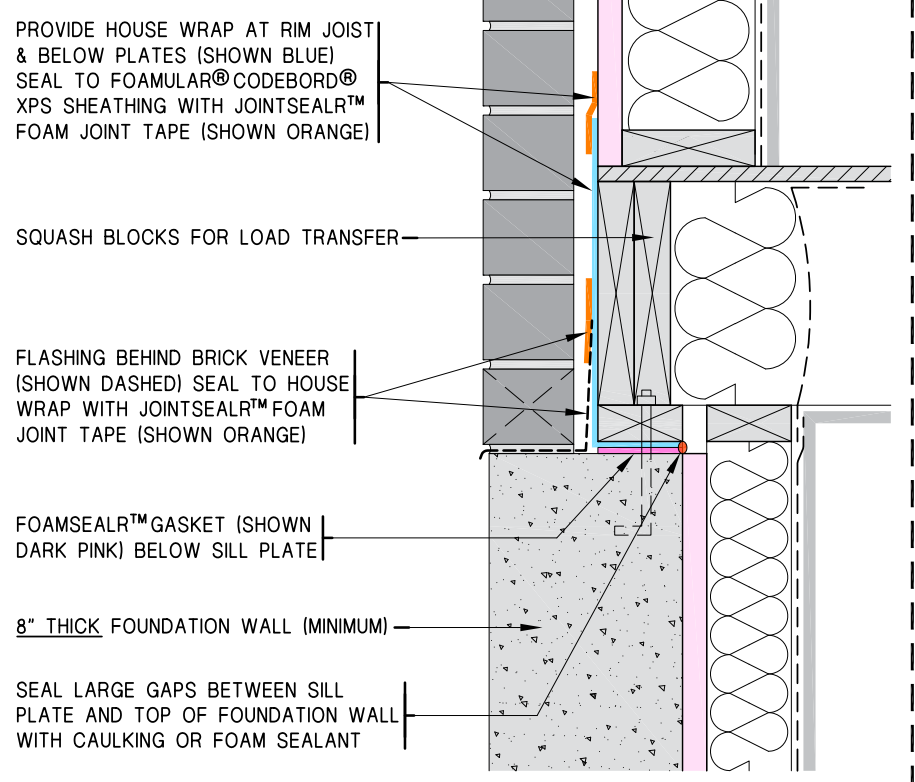
DETAIL 3 (Window 1b)



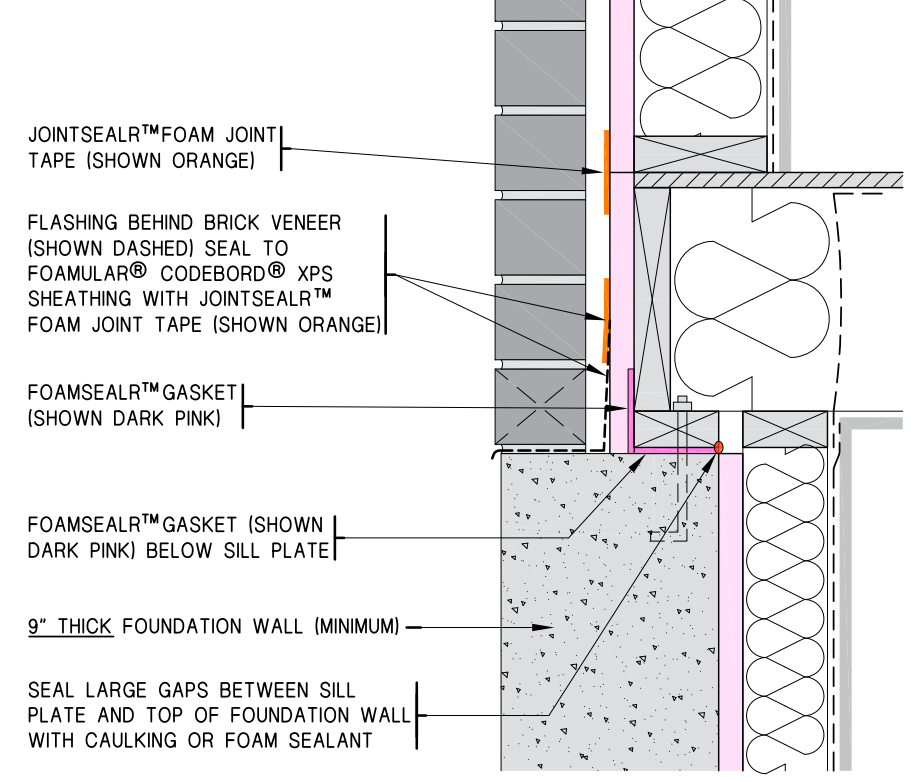
DETAIL 4 (Vinyl to Brick Connection)



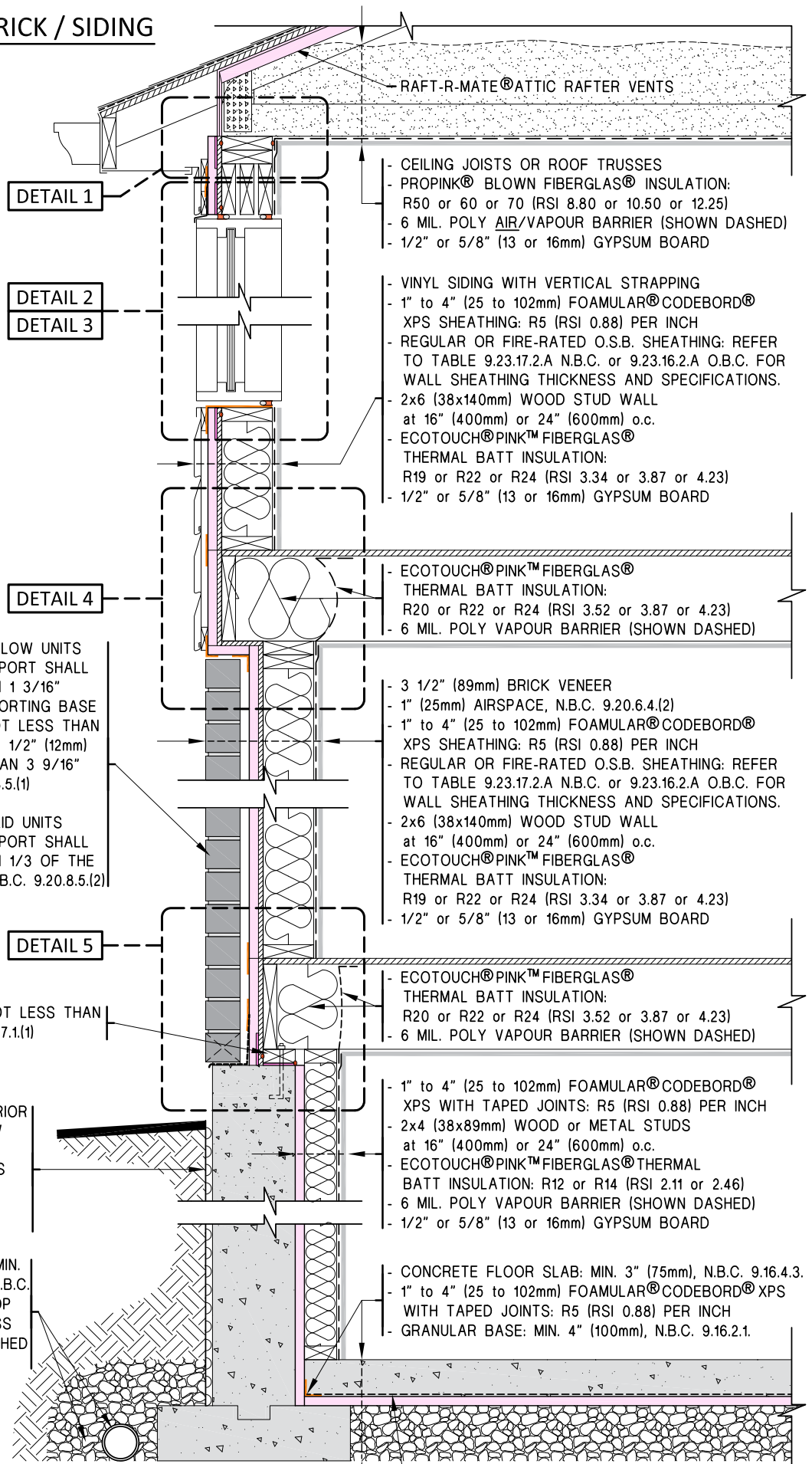
DETAIL 5 (Header 8" Foundation)



DETAIL 6 (Header 9" Foundation)



TYPICAL WALL - BRICK / SIDING



RAFT-R-MATE® ATTIC RAFTER VENTS

DETAIL 1

- CEILING JOISTS OR ROOF TRUSSES
- PROPINK® BLOWN FIBERGLAS® INSULATION: R50 or 60 or 70 (RSI 8.80 or 10.50 or 12.25)
- 6 MIL. POLY AIR/VAPOUR BARRIER (SHOWN DASHED)
- 1/2" or 5/8" (13 or 16mm) GYPSUM BOARD

DETAIL 2
DETAIL 3

- VINYL SIDING WITH VERTICAL STRAPPING
- 1" to 4" (25 to 102mm) FOAMULAR® CODEBORD® XPS SHEATHING: R5 (RSI 0.88) PER INCH
- REGULAR OR FIRE-RATED O.S.B. SHEATHING: REFER TO TABLE 9.23.17.2.A N.B.C. or 9.23.16.2.A O.B.C. FOR WALL SHEATHING THICKNESS AND SPECIFICATIONS.
- 2x6 (38x140mm) WOOD STUD WALL at 16" (400mm) or 24" (600mm) o.c.
- ECOTOUCH® PINK™ FIBERGLAS® THERMAL BATT INSULATION: R19 or R22 or R24 (RSI 3.34 or 3.87 or 4.23)
- 1/2" or 5/8" (13 or 16mm) GYPSUM BOARD

DETAIL 4

- ECOTOUCH® PINK™ FIBERGLAS® THERMAL BATT INSULATION: R20 or R22 or R24 (RSI 3.52 or 3.87 or 4.23)
- 6 MIL. POLY VAPOUR BARRIER (SHOWN DASHED)

MASONRY VENEER OF HOLLOW UNITS RESTING ON BEARING SUPPORT SHALL NOT PROJECT MORE THAN 1 3/16" (30mm) BEYOND THE SUPPORTING BASE WHERE THE VENEER IS NOT LESS THAN 3 9/16" (90mm) THICK AND 1/2" (12mm) WHEN VENEER IS LESS THAN 3 9/16" (90mm) THICK, N.B.C. 9.20.8.5.(1)

MASONRY VENEER OF SOLID UNITS RESTING ON BEARING SUPPORT SHALL NOT PROJECT MORE THAN 1/3 OF THE WIDTH OF THE VENEER, N.B.C. 9.20.8.5.(2)

- 3 1/2" (89mm) BRICK VENEER
- 1" (25mm) AIRSPACE, N.B.C. 9.20.6.4.(2)
- 1" to 4" (25 to 102mm) FOAMULAR® CODEBORD® XPS SHEATHING: R5 (RSI 0.88) PER INCH
- REGULAR OR FIRE-RATED O.S.B. SHEATHING: REFER TO TABLE 9.23.17.2.A N.B.C. or 9.23.16.2.A O.B.C. FOR WALL SHEATHING THICKNESS AND SPECIFICATIONS.
- 2x6 (38x140mm) WOOD STUD WALL at 16" (400mm) or 24" (600mm) o.c.
- ECOTOUCH® PINK™ FIBERGLAS® THERMAL BATT INSULATION: R19 or R22 or R24 (RSI 3.34 or 3.87 or 4.23)
- 1/2" or 5/8" (13 or 16mm) GYPSUM BOARD

DETAIL 5

SILL PLATES SHALL BE NOT LESS THAN 2x4 (38x89mm), N.B.C. 9.23.7.1.(1)

- ECOTOUCH® PINK™ FIBERGLAS® THERMAL BATT INSULATION: R20 or R22 or R24 (RSI 3.52 or 3.87 or 4.23)
- 6 MIL. POLY VAPOUR BARRIER (SHOWN DASHED)

DAMP-PROOFING AT EXTERIOR FOUNDATION WALL BELOW GRADE, WHERE EXTERIOR FINISHED GROUND LEVEL IS AT A HIGHER ELEVATION THAN THE GROUND LEVEL INSIDE, N.B.C. 9.13.2.1.

- 1" to 4" (25 to 102mm) FOAMULAR® CODEBORD® XPS WITH TAPED JOINTS: R5 (RSI 0.88) PER INCH
- 2x4 (38x89mm) WOOD or METAL STUDS at 16" (400mm) or 24" (600mm) o.c.
- ECOTOUCH® PINK™ FIBERGLAS® THERMAL BATT INSULATION: R12 or R14 (RSI 2.11 or 2.46)
- 6 MIL. POLY VAPOUR BARRIER (SHOWN DASHED)
- 1/2" or 5/8" (13 or 16mm) GYPSUM BOARD

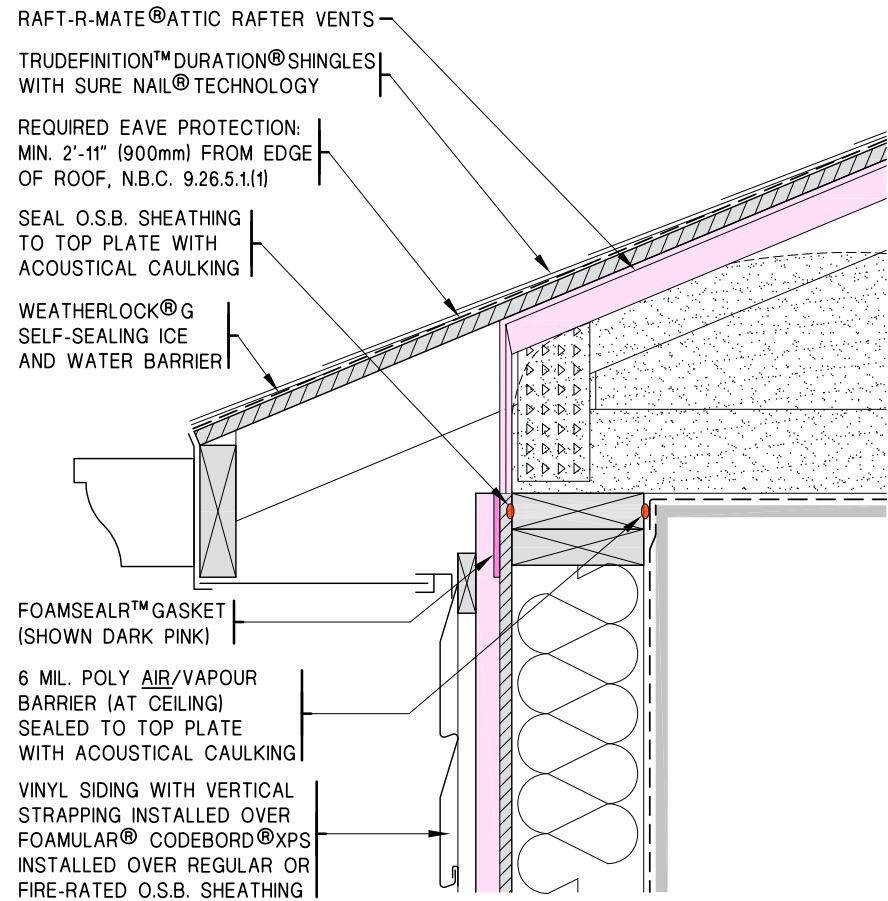
REQUIRED WEeping TILE: MIN. 4" (100mm) IN DIAMETER, N.B.C. 9.14.3.2. AND COVERED (TOP AND SIDES) WITH NOT LESS THAN 6" (150mm) OF CRUSHED STONE, N.B.C. 9.14.3.3.(4)

- CONCRETE FLOOR SLAB: MIN. 3" (75mm), N.B.C. 9.16.4.3.
- 1" to 4" (25 to 102mm) FOAMULAR® CODEBORD® XPS WITH TAPED JOINTS: R5 (RSI 0.88) PER INCH
- GRANULAR BASE: MIN. 4" (100mm), N.B.C. 9.16.2.1.

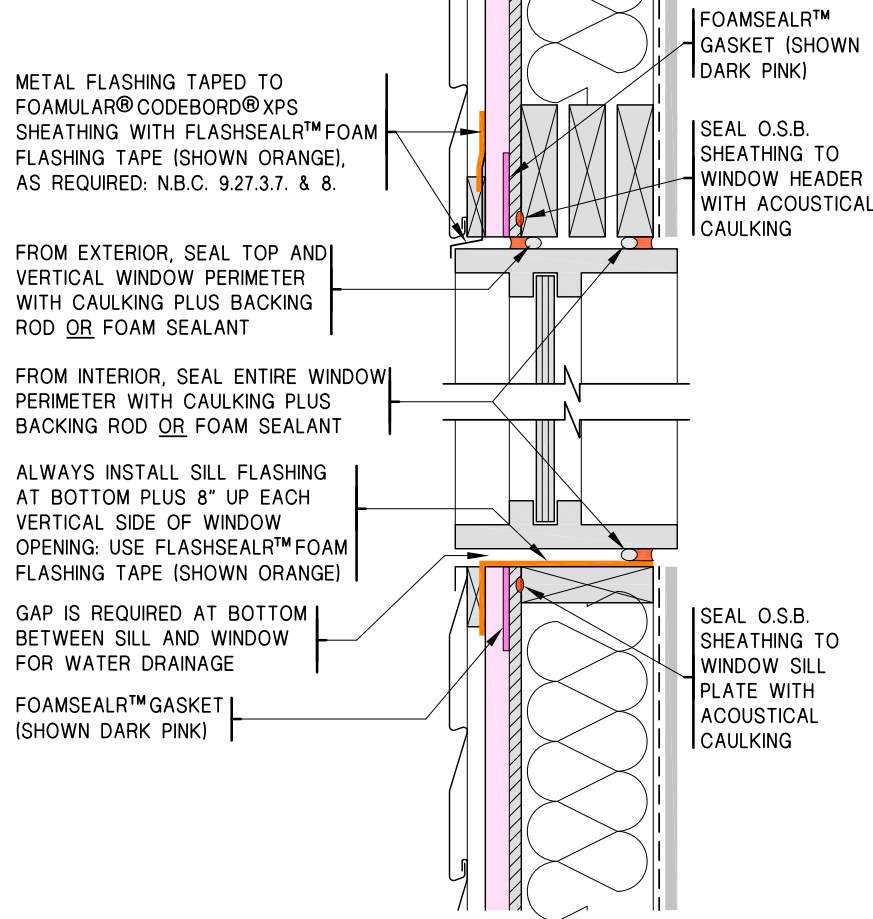
HYBRID with OSB:

CONSULT LOCAL BUILDING OFFICIAL REGARDING REQUIREMENT OF POLY VAPOUR BARRIER UNDERNEATH CONCRETE FLOOR SLAB.

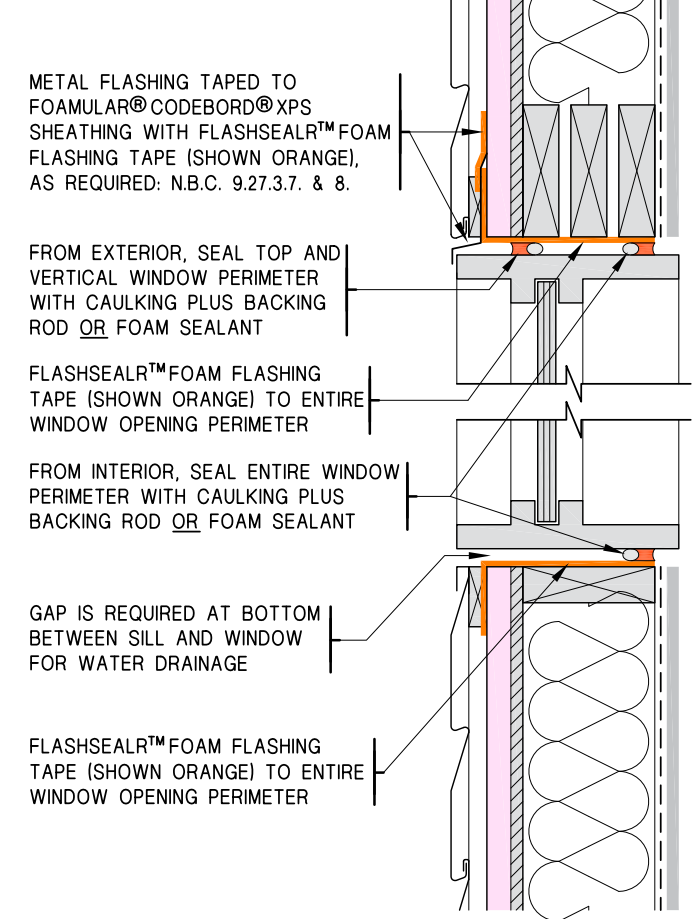
DETAIL 1 (Exterior Wall to Ceiling Connection)



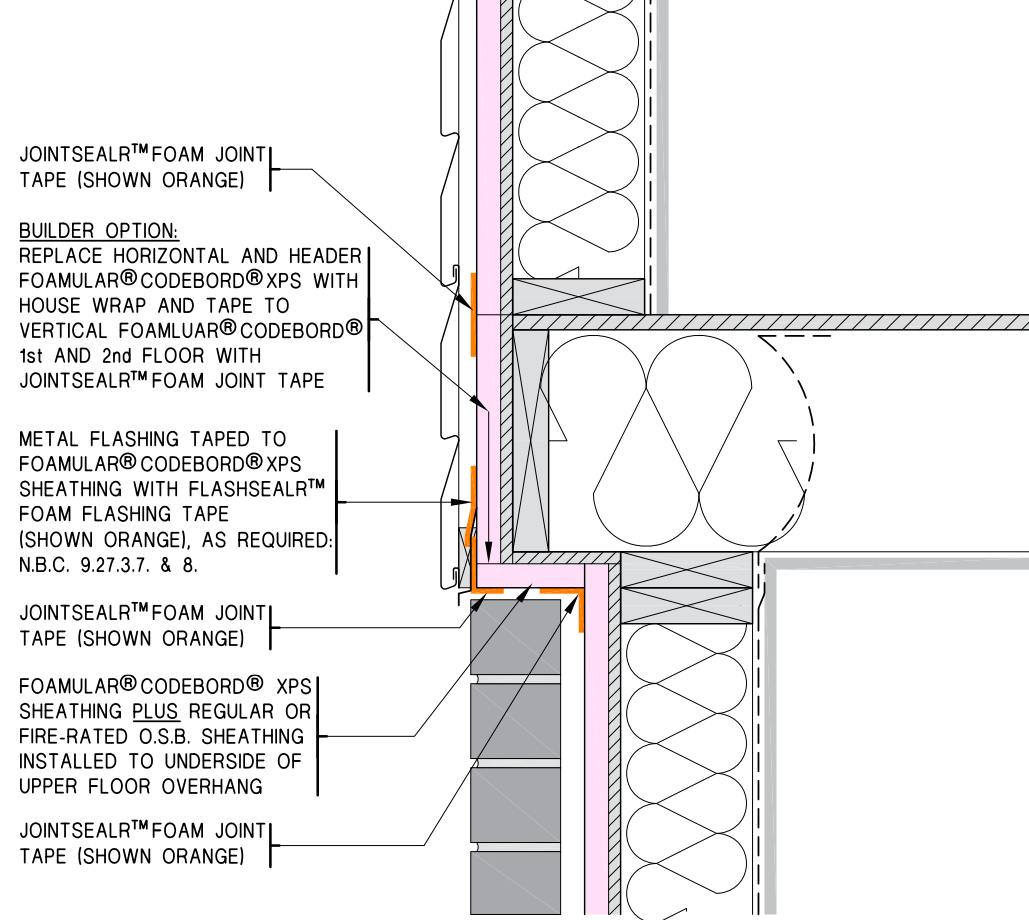
DETAIL 2 (Window 1a)



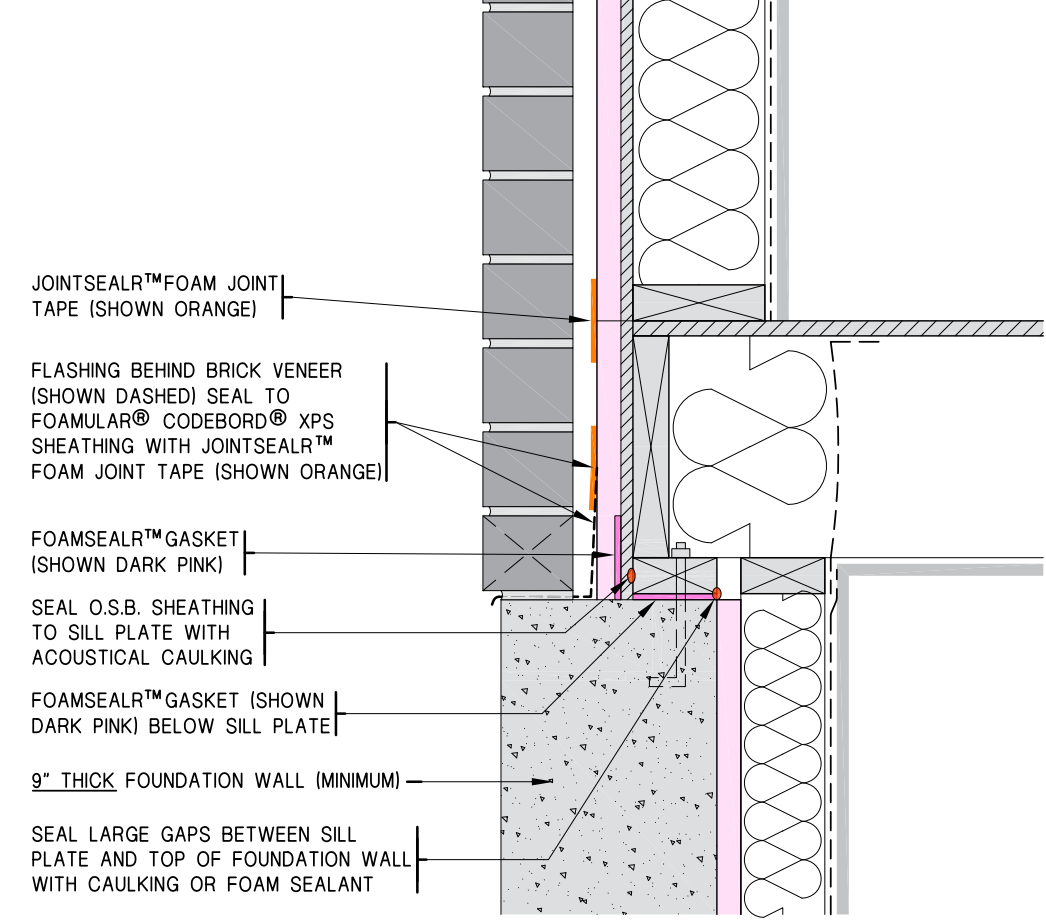
DETAIL 3 (Window 1b)



DETAIL 4 (Vinyl to Brick Connection)



DETAIL 5 (Header 9" Foundation)



ONE TOUGH AIR BARRIER SYSTEM FOR TODAY'S CODES & BEYOND.



Owens Corning FOAMULAR® CodeBord® Air Barrier System is another innovative solution providing long term energy efficiency performance and comfort for homeowners.

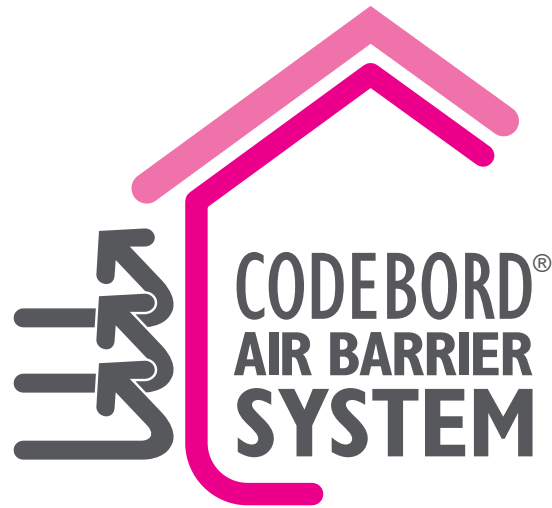
1-800-GET-PINK® or visit owenscorning.ca



INNOVATIONS FOR LIVING®

73	20
 <p>GREENGUARD PRODUCT CERTIFIED FOR LOW CHEMICAL EMISSIONS UL.COM/GG UL 2818 GOLD</p>	 <p>GREENGUARD PRODUCT CERTIFIED FOR LOW CHEMICAL EMISSIONS UL.COM/GG UL 2818 GOLD</p>
 <p>VALIDATED PRODUCT IS FORMALDEHYDE FREE UL.COM/VCV</p>	 <p>SCS certified MINIMUM 20% RECYCLED CONTENT PRE-CONSUMER</p>
 <p>EcoLogo Certified Thermal Insulation Minimum CDS-010</p>	
 <p>SCS certified MINIMUM 73% RECYCLED CONTENT 64% POST-CONSUMER 9% PRE-CONSUMER</p>	
<p>PINK™ FIBERGLAS® Insulation</p>	<p>FOAMULAR® Extruded Polystyrene Insulation</p>

THE PINK PANTHER™ & © 1964-2014 Metro-Goldwyn-Mayer Studios Inc. All Rights Reserved. The colour PINK is a registered trademark of Owens Corning. © 2014 Owens Corning. All Rights Reserved. 73% recycled content is based on the average recycled glass content in all Owens Corning fiberglass batts, rolls and unbonded loosefill insulation manufactured in Canada. SCS certified. GREENGUARD Certified products are certified to GREENGUARD standards for low chemical emissions into indoor air during product usage. For more information, visit ul.com/gg.



All rights reserved. No part of the work contained herein as covered by this copyright may be reproduced or used in any form, or any means - graphic, electronic or mechanical, including photocopying, recording, taping or information storage or retrieval systems - without the written permission of Owens Corning Canada LP. The colour PINK is a registered trademark of Owens Corning. © 2014 Owens Corning. All Rights Reserved.

DISCLAIMER

The procedures presented in this manual are intended as a guideline only, to provide a basic understanding of the concepts involved in the proper and effective installation of the Owens Corning CodeBord® Air Barrier System. It remains the responsibility of the air barrier system installer and/or builder to ensure that all work performed conforms to applicable building code and labour safety regulations governing the construction. While care has been taken to ensure accuracy, and convey proper construction practices, Owens Corning is not making, and specifically disclaims, any recommendations, warranties or guarantees, and further expressly disclaims any and all responsibility for consequential loss, errors or oversights resulting from the information contained herein. Our liability is expressly limited to replacement of defective Owens Corning™ goods. Any claim shall be deemed waived unless made to us in writing within thirty(30) days from the date when the basis for it was, or reasonably should have been, discovered.



OWENS CORNING CANADA LP

3450 McNicoll Ave
Scarborough, ON, M1V 1Z5

1-800-GET-PINK®
www.owenscorning.ca

INNOVATIONS FOR LIVING®

Pub No. 500637 Printed in Canada May 2014.

Additional copies of this publication may be obtained by visiting www.owenscorning.ca or calling toll free 1-800-GET-PINK® (1-800-438-7465).