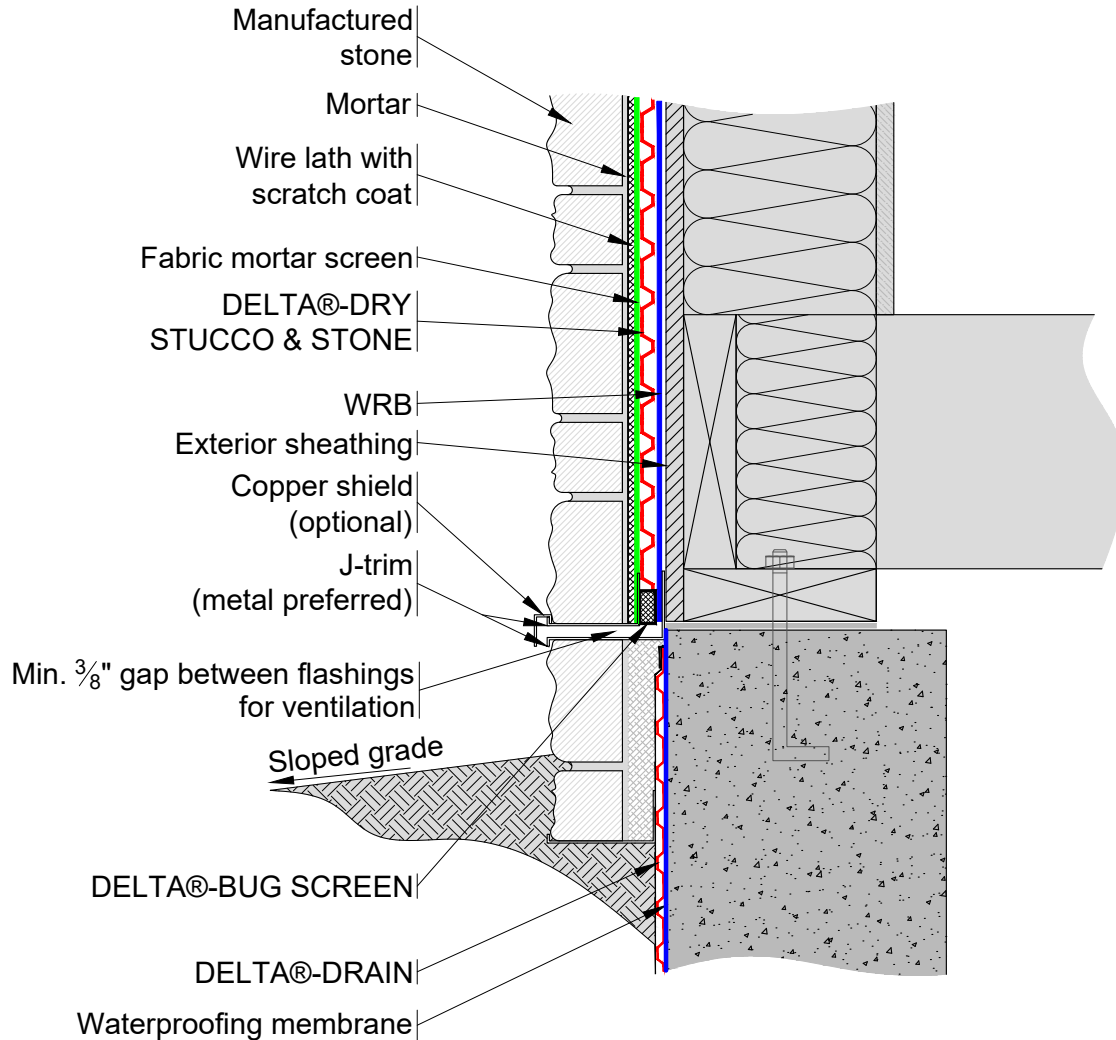


NOTE:

WRB (WATER-RESISTIVE BARRIER) TO BE
INSTALLED AS PER MANUFACTURER'S
SPECIFICATIONS



****For proper performance of DELTA®-DRY ensure top and bottom remain open to allow ventilation and drainage****

SUBSTANTIAL EFFORT HAS BEEN MADE TO ENSURE THAT THE INFORMATION IN THIS DETAIL DRAWING IS ACCURATE. DÖRKEN SYSTEMS INC. CANNOT ACCEPT RESPONSIBILITY FOR ANY ERRORS OR OVERSIGHTS IN THE USE OF THIS MATERIAL OR IN THE PREPARATION OF ARCHITECTURAL OR ENGINEERING PLANS. THE DESIGN PROFESSIONAL MUST RECOGNIZE THAT NO DESIGN DETAIL CAN SUBSTITUTE FOR EXPERIENCED ENGINEERING AND PROFESSIONAL JUDGEMENT.

TITLE:

MANUFACTURED STONE BELOW GRADE
WITH DELTA®-DRY STUCCO & STONE

DRAWN BY: Krzysztof Apiasz C. Tech., CPHC®

Date: February 8, 2011

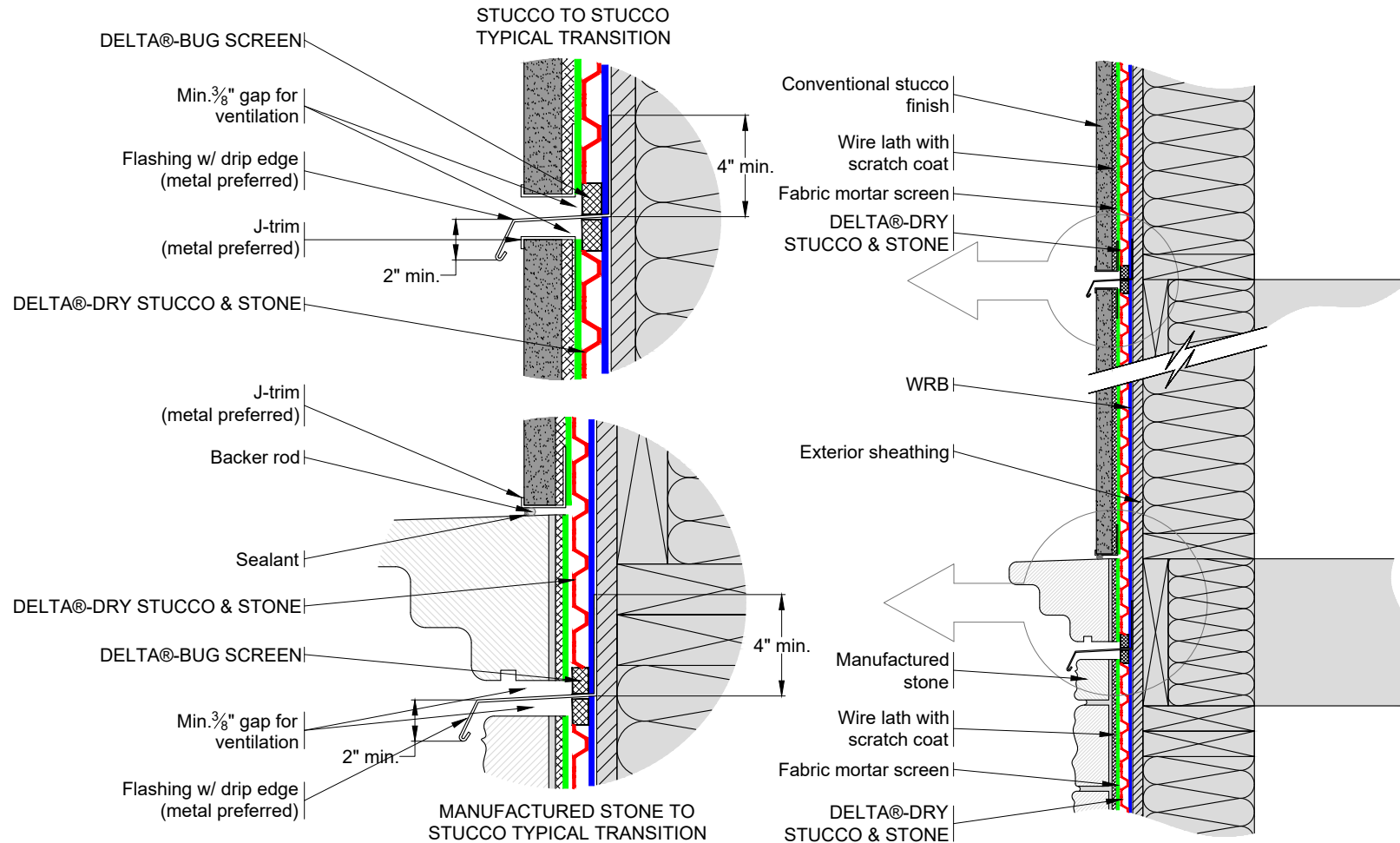
File Name: DRY1_MSB_S&S

DÖRKEN

DELTA®

4655 DELTA WAY BEAMSVILLE, ON. L0R 1B4 CANADA
1-888-433-5824 or 1-905-563-3255

NOTE:
WRB (WATER-RESISTIVE BARRIER) TO BE
INSTALLED AS PER MANUFACTURER'S
SPECIFICATIONS



****For proper performance of DELTA®-DRY ensure top and bottom remain open to allow ventilation and drainage****

SUBSTANTIAL EFFORT HAS BEEN MADE TO ENSURE THAT THE INFORMATION IN THIS DETAIL DRAWING IS ACCURATE. DÖRKEN SYSTEMS INC. CANNOT ACCEPT RESPONSIBILITY FOR ANY ERRORS OR OVERSIGHTS IN THE USE OF THIS MATERIAL OR IN THE PREPARATION OF ARCHITECTURAL OR ENGINEERING PLANS. THE DESIGN PROFESSIONAL MUST RECOGNIZE THAT NO DESIGN DETAIL CAN SUBSTITUTE FOR EXPERIENCED ENGINEERING AND PROFESSIONAL JUDGEMENT.

TITLE:

TYPICAL WALL TRANSITION DETAILS OPTION 2.

DRAWN BY: Krzysztof Apiasz C. Tech., CPHC®

DATE: February 8, 2011
 SCALE: NTS

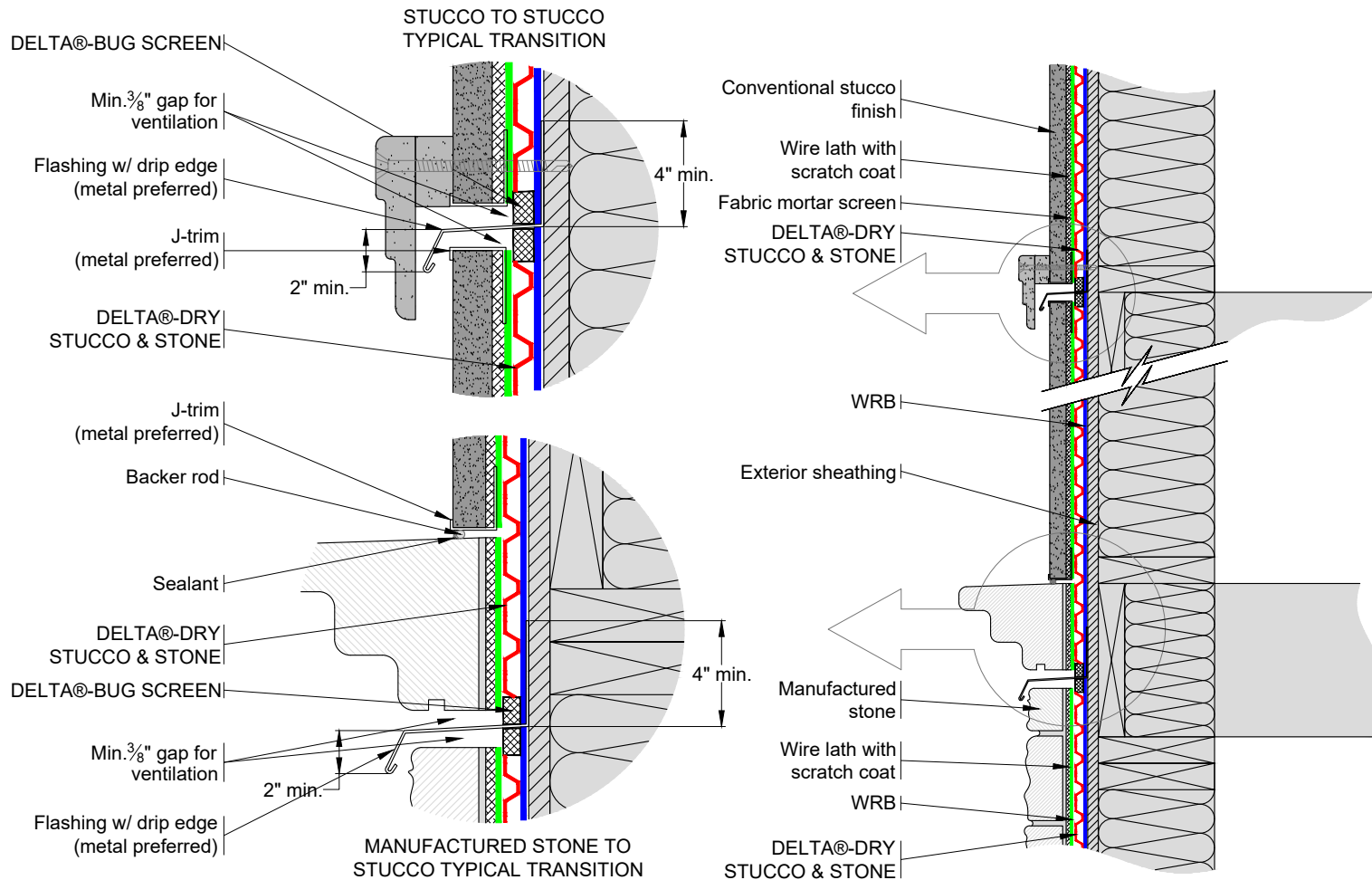
FILE NAME:
 DRY_TRANSITION1_S&S

DÖRKEN



4655 DELTA WAY BEAMSVILLE, ON. L0R 1B4 CANADA
 1-888-433-5824 or 1-905-563-3255

NOTE:
WRB (WATER-RESISTIVE BARRIER) TO BE
INSTALLED AS PER MANUFACTURER'S
SPECIFICATIONS



****For proper performance of DELTA®-DRY ensure top and bottom remain open to allow ventilation and drainage****

SUBSTANTIAL EFFORT HAS BEEN MADE TO ENSURE THAT THE INFORMATION IN THIS DETAIL DRAWING IS ACCURATE. DÖRKEN SYSTEMS INC. CANNOT ACCEPT RESPONSIBILITY FOR ANY ERRORS OR OVERSIGHTS IN THE USE OF THIS MATERIAL OR IN THE PREPARATION OF ARCHITECTURAL OR ENGINEERING PLANS. THE DESIGN PROFESSIONAL MUST RECOGNIZE THAT NO DESIGN DETAIL CAN SUBSTITUTE FOR EXPERIENCED ENGINEERING AND PROFESSIONAL JUDGEMENT.

TITLE:

TYPICAL TRANSITION DETAIL OPTION 2.

DRAWN BY: Krzysztof Apiasz C. Tech., CPHC®

DATE: February 8, 2011
SCALE: NTS

FILE NAME:
DRY_TRANSITION2_S&S

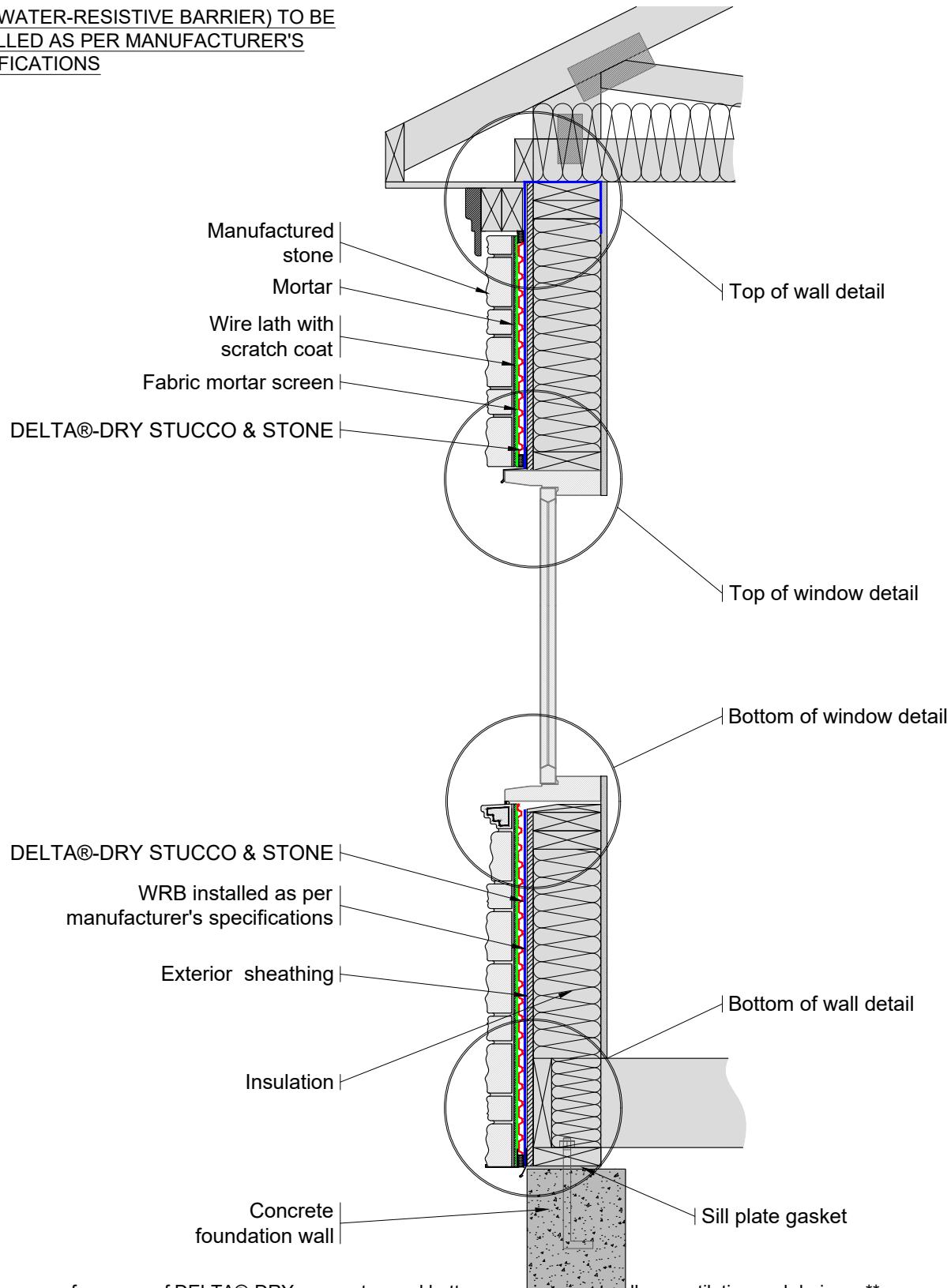
DÖRKEN



4655 DELTA WAY BEAMSVILLE, ON. L0R 1B4 CANADA
1-888-433-5824 or 1-905-563-3255

NOTE:

WRB (WATER-RESISTIVE BARRIER) TO BE
INSTALLED AS PER MANUFACTURER'S
SPECIFICATIONS



****For proper performance of DELTA®-DRY ensure top and bottom remain open to allow ventilation and drainage****

SUBSTANTIAL EFFORT HAS BEEN MADE TO ENSURE THAT THE INFORMATION IN THIS DETAIL DRAWING IS ACCURATE. DÖRKEN SYSTEMS INC. CANNOT ACCEPT RESPONSIBILITY FOR ANY ERRORS OR OVERSIGHTS IN THE USE OF THIS MATERIAL OR IN THE PREPARATION OF ARCHITECTURAL OR ENGINEERING PLANS. THE DESIGN PROFESSIONAL MUST RECOGNIZE THAT NO DESIGN DETAIL CAN SUBSTITUTE FOR EXPERIENCED ENGINEERING AND PROFESSIONAL JUDGEMENT.

TITLE:

**DELTA®-DRY STUCCO&STONE
RAINSCREEN APPLICATION WITH
MANUFACTURED STONE**

DRAWN BY: Krzysztof Apiasz C. Tech., CPHC®

Date: February 8, 2011

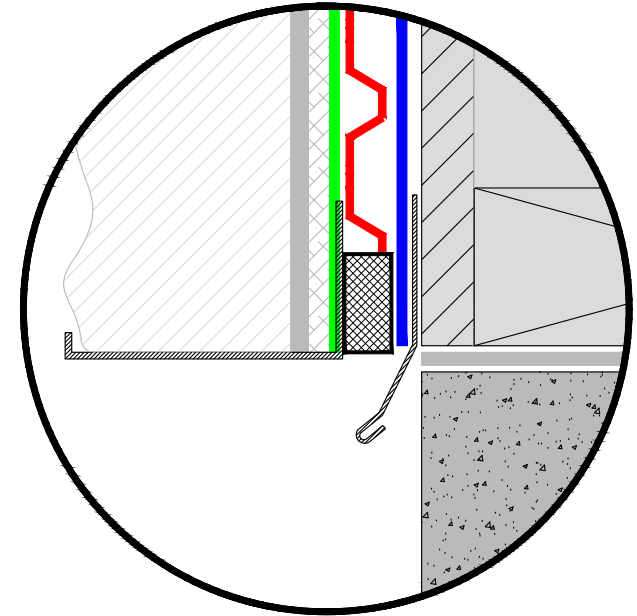
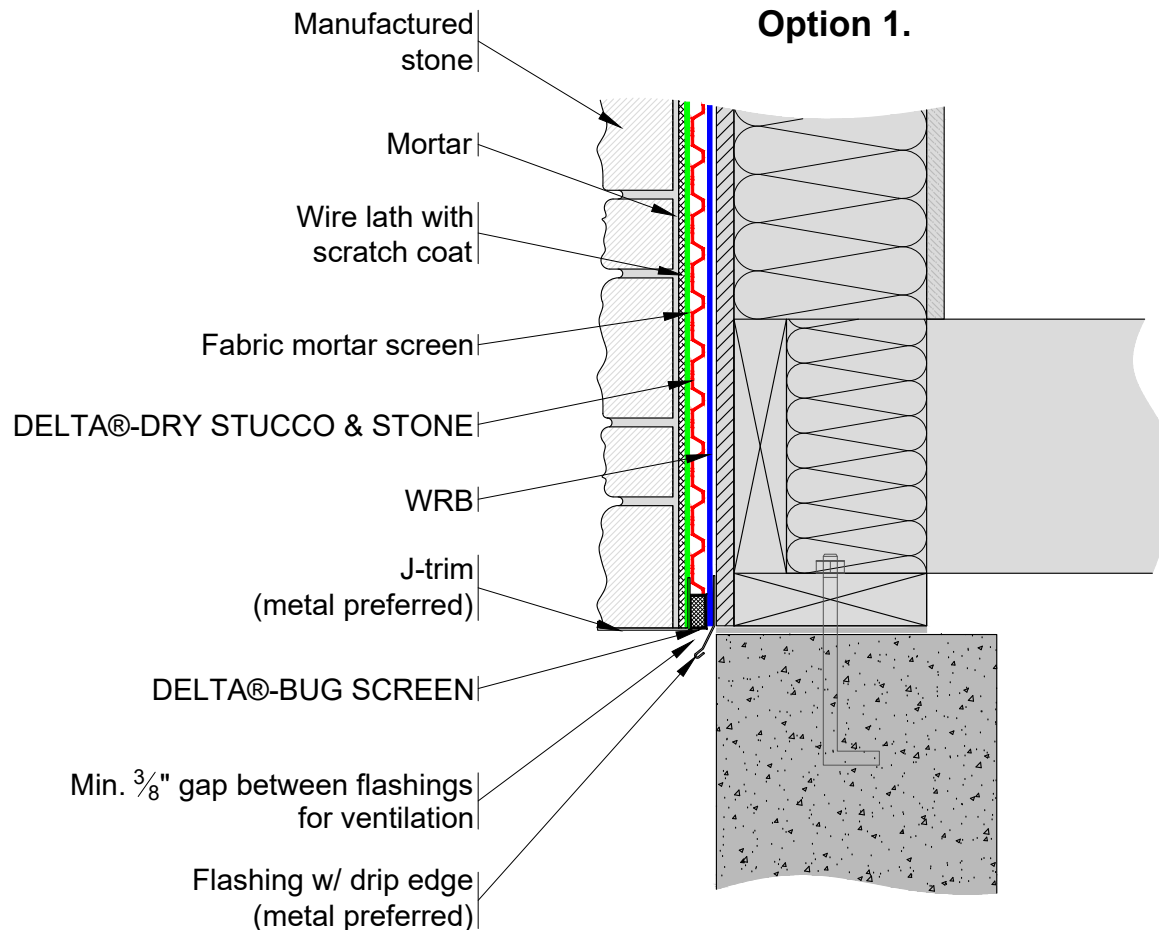
File Name: DRY1_S&S

DÖRKEN

DELTA®

4655 DELTA WAY BEAMSVILLE, ON. L0R 1B4 CANADA
1-888-433-5824 or 1-905-563-3255

NOTE:
WRB (WATER-RESISTIVE BARRIER) TO BE
INSTALLED AS PER MANUFACTURER'S
SPECIFICATIONS



****For proper performance of DELTA®-DRY ensure top and bottom remain open to allow ventilation and drainage****

SUBSTANTIAL EFFORT HAS BEEN MADE TO ENSURE THAT THE INFORMATION IN THIS DETAIL DRAWING IS ACCURATE. DÖRKEN SYSTEMS INC. CANNOT ACCEPT RESPONSIBILITY FOR ANY ERRORS OR OVERSIGHTS IN THE USE OF THIS MATERIAL OR IN THE PREPARATION OF ARCHITECTURAL OR ENGINEERING PLANS. THE DESIGN PROFESSIONAL MUST RECOGNIZE THAT NO DESIGN DETAIL CAN SUBSTITUTE FOR EXPERIENCED ENGINEERING AND PROFESSIONAL JUDGEMENT.

TITLE:

**DELTA®-DRY STUCCO & STONE RAINSCREEN
APPLICATION WITH MANUFACTURED STONE
BOTTOM OF WALL DETAIL OPTION 1**

DRAWN BY: Krzysztof Apiasz C. Tech., CPHC®

DATE: February 8, 2011
SCALE: NTS

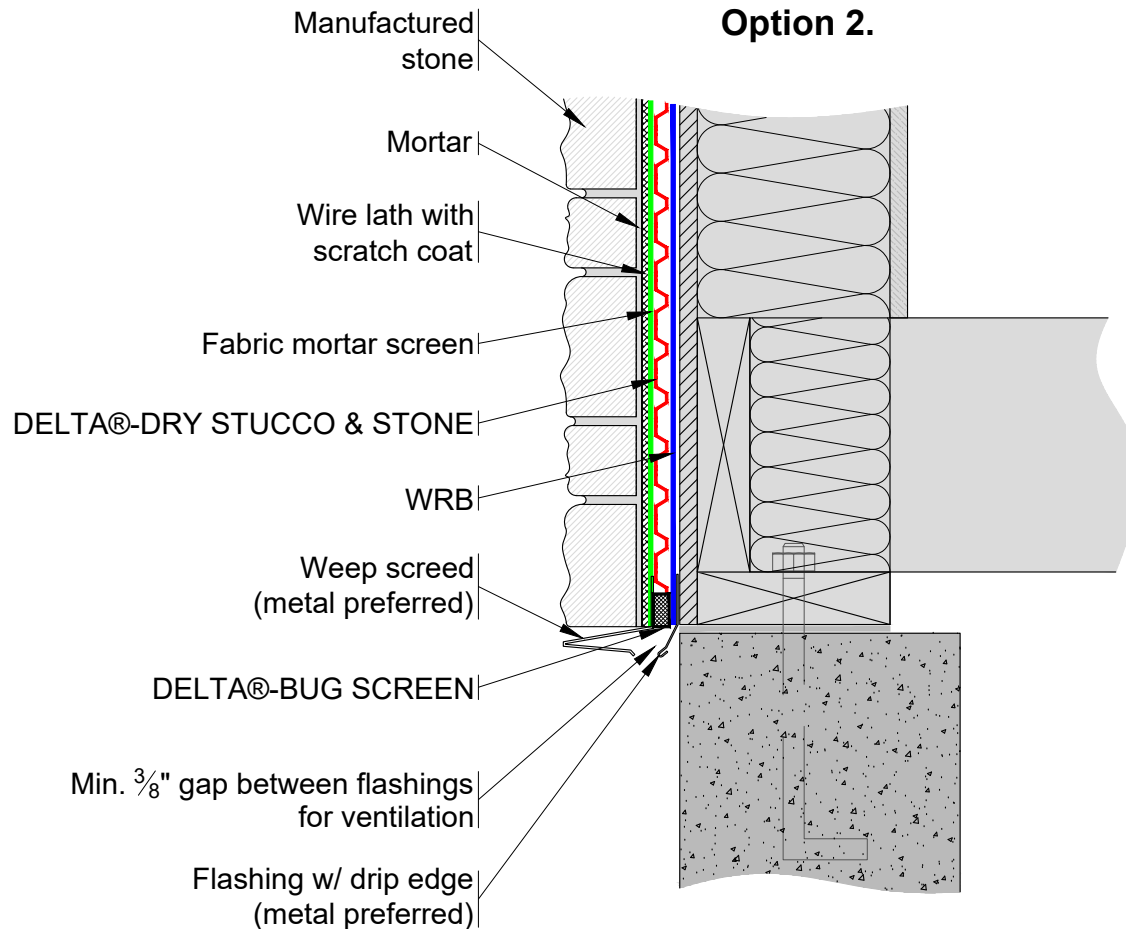
FILE NAME:
DRY1_S&SB1

DÖRKEN



4655 DELTA WAY BEAMSVILLE, ON. L0R 1B4 CANADA
1-888-433-5824 or 1-905-563-3255

NOTE:
WRB (WATER-RESISTIVE BARRIER) TO BE
INSTALLED AS PER MANUFACTURER'S
SPECIFICATIONS



****For proper performance of DELTA®-DRY ensure top and bottom remain open to allow ventilation and drainage****

SUBSTANTIAL EFFORT HAS BEEN MADE TO ENSURE THAT THE INFORMATION IN THIS DETAIL DRAWING IS ACCURATE. DÖRKEN SYSTEMS INC. CANNOT ACCEPT RESPONSIBILITY FOR ANY ERRORS OR OVERSIGHTS IN THE USE OF THIS MATERIAL OR IN THE PREPARATION OF ARCHITECTURAL OR ENGINEERING PLANS. THE DESIGN PROFESSIONAL MUST RECOGNIZE THAT NO DESIGN DETAIL CAN SUBSTITUTE FOR EXPERIENCED ENGINEERING AND PROFESSIONAL JUDGEMENT.

TITLE:

**DELTA®-DRY STUCCO & STONE RAINSCREEN
APPLICATION WITH MANUFACTURED STONE
BOTTOM OF WALL DETAIL OPTION 2**

DRAWN BY: Krzysztof Apiasz C. Tech., CPHC®

DATE: February 8, 2011
SCALE: NTS

FILE NAME:
DRY1_S&SB2

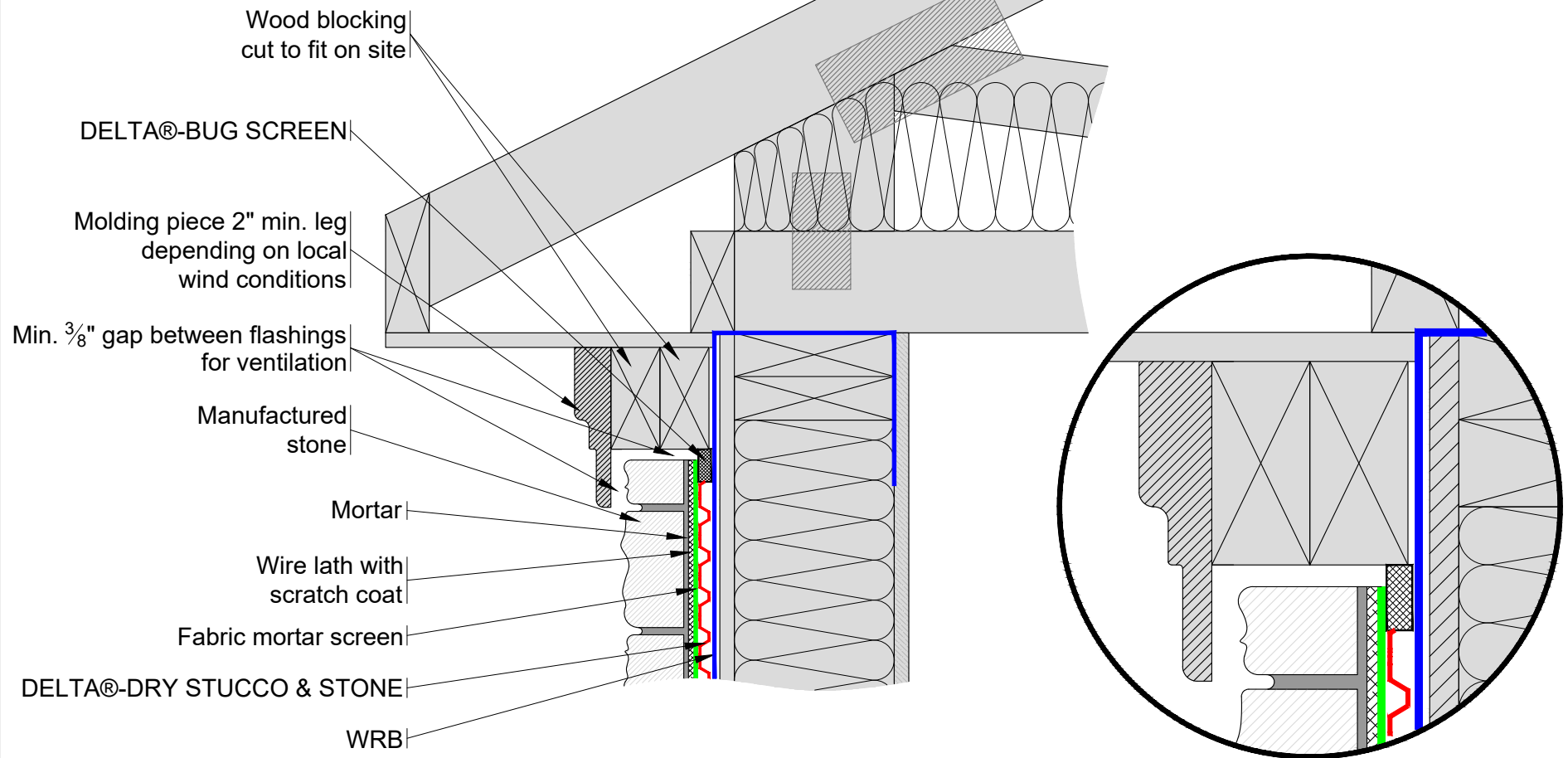
DÖRKEN



4655 DELTA WAY BEAMSVILLE, ON. L0R 1B4 CANADA
1-888-433-5824 or 1-905-563-3255

NOTE:
WRB (WATER-RESISTIVE BARRIER) TO BE
INSTALLED AS PER MANUFACTURER'S
SPECIFICATIONS

Option 1.



****For proper performance of DELTA®-DRY ensure top and bottom remain open to allow ventilation and drainage****

SUBSTANTIAL EFFORT HAS BEEN MADE TO ENSURE THAT THE INFORMATION IN THIS DETAIL DRAWING IS ACCURATE. DÖRKEN SYSTEMS INC. CANNOT ACCEPT RESPONSIBILITY FOR ANY ERRORS OR OVERSIGHTS IN THE USE OF THIS MATERIAL OR IN THE PREPARATION OF ARCHITECTURAL OR ENGINEERING PLANS. THE DESIGN PROFESSIONAL MUST RECOGNIZE THAT NO DESIGN DETAIL CAN SUBSTITUTE FOR EXPERIENCED ENGINEERING AND PROFESSIONAL JUDGEMENT.

TITLE:

DELTA®-DRY STUCCO & STONE RAINSCREEN APPLICATION WITH MANUFACTURED STONE TOP OF WALL DETAIL OPTION 1

DRAWN BY: Krzysztof Apiasz C. Tech., CPHC®

DATE: February 8, 2011
SCALE: NTS

FILE NAME:
DRY1_S&ST1

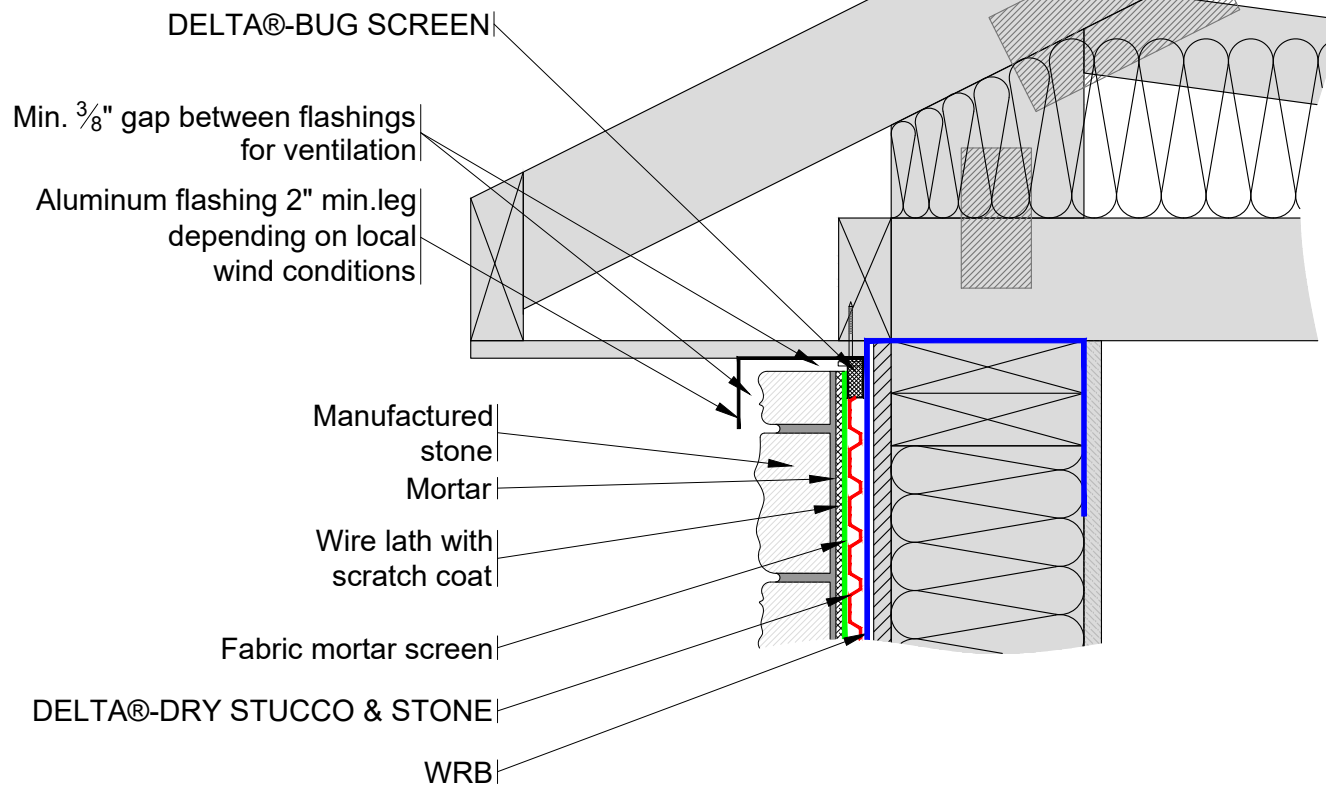
DÖRKEN



4655 DELTA WAY BEAMSVILLE, ON. L0R 1B4 CANADA
1-888-433-5824 or 1-905-563-3255

NOTE:
WRB (WATER-RESISTIVE BARRIER) TO BE
INSTALLED AS PER MANUFACTURER'S
SPECIFICATIONS

Option 2. "L" flashing



For proper performance of DELTA®-DRY ensure top and bottom remain open to allow ventilation and drainage

SUBSTANTIAL EFFORT HAS BEEN MADE TO ENSURE THAT THE INFORMATION IN THIS DETAIL DRAWING IS ACCURATE. DÖRKEN SYSTEMS INC. CANNOT ACCEPT RESPONSIBILITY FOR ANY ERRORS OR OVERSIGHTS IN THE USE OF THIS MATERIAL OR IN THE PREPARATION OF ARCHITECTURAL OR ENGINEERING PLANS. THE DESIGN PROFESSIONAL MUST RECOGNIZE THAT NO DESIGN DETAIL CAN SUBSTITUTE FOR EXPERIENCED ENGINEERING AND PROFESSIONAL JUDGEMENT.

TITLE:

DELTA®-DRY STUCCO & STONE RAINSCREEN APPLICATION WITH MANUFACTURED STONE TOP OF WALL DETAIL OPTION 2

DRAWN BY: Krzysztof Apiasz C. Tech., CPHC®

DATE: February 8, 2011
SCALE: NTS

FILE NAME:
DRY1_S&ST2

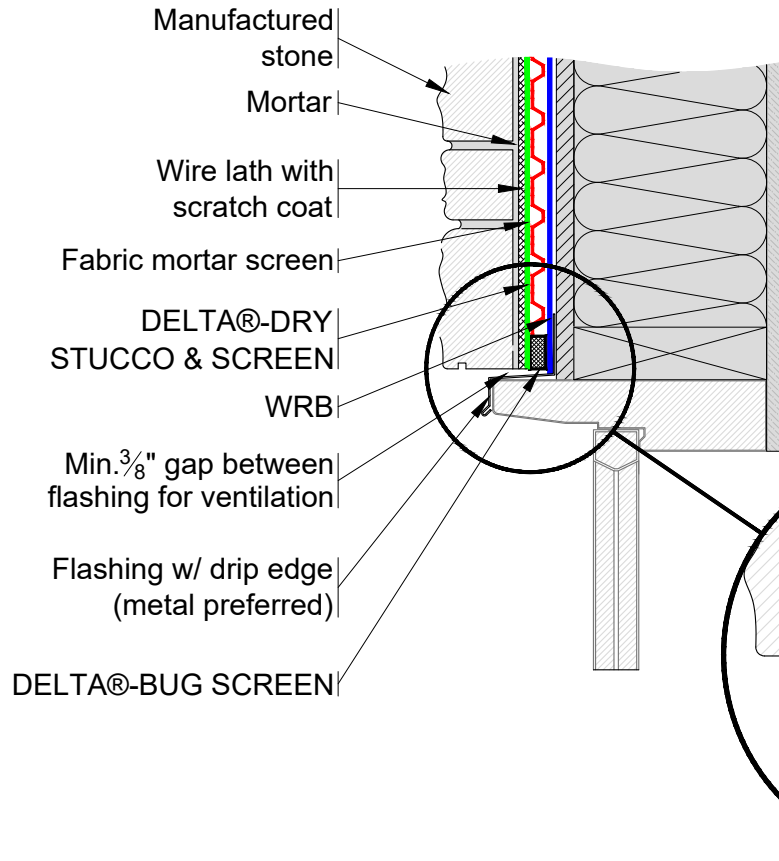
DÖRKEN



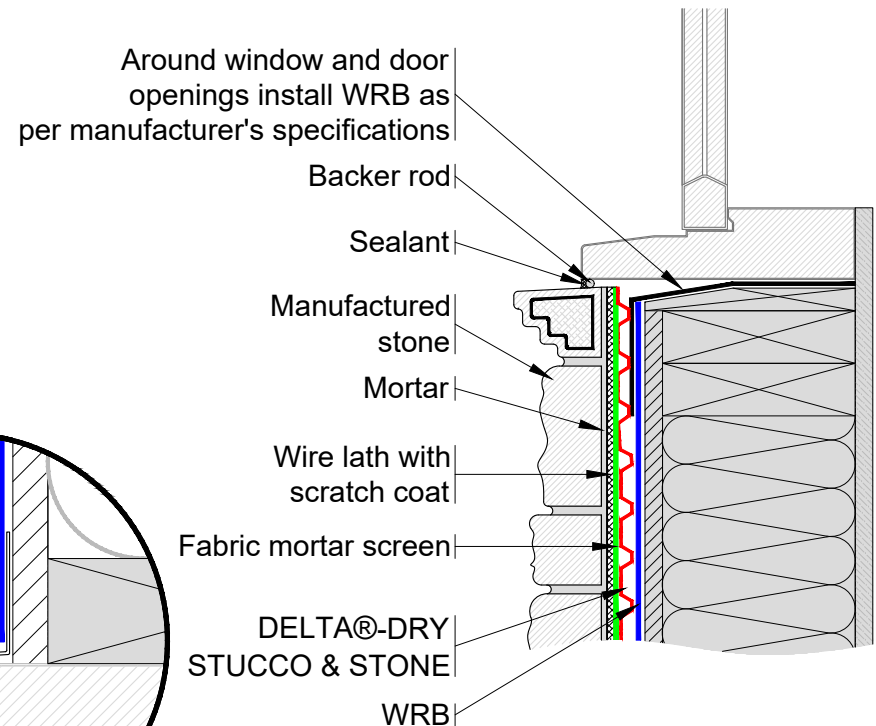
4655 DELTA WAY BEAMSVILLE, ON. L0R 1B4 CANADA
1-888-433-5824 or 1-905-563-3255

NOTE:
WRB (WATER-RESISTIVE BARRIER) TO BE
INSTALLED AS PER MANUFACTURER'S
SPECIFICATIONS

TOP OF WINDOW DETAIL



BOTTOM OF WINDOW DETAIL



For proper performance of DELTA®-DRY ensure top and bottom remain open to allow ventilation and drainage

SUBSTANTIAL EFFORT HAS BEEN MADE TO ENSURE THAT THE INFORMATION IN THIS DETAIL DRAWING IS ACCURATE. DRKEN SYSTEMS INC. CANNOT ACCEPT RESPONSIBILITY FOR ANY ERRORS OR OVERSIGHTS IN THE USE OF THIS MATERIAL OR IN THE PREPARATION OF ARCHITECTURAL OR ENGINEERING PLANS. THE DESIGN PROFESSIONAL MUST RECOGNIZE THAT NO DESIGN DETAIL CAN SUBSTITUTE FOR EXPERIENCED ENGINEERING AND PROFESSIONAL JUDGEMENT.

TITLE:

DELTA®-DRY STUCCO & STONE RAINSCREEN APPLICATION WITH MANUFACTURED STONE WINDOW DETAIL

DRAWN BY: Krzysztof Apiasz C. Tech., CPHC®

DATE: February 8, 2011
SCALE: NTS

FILE NAME:
DRY1_S&SW1

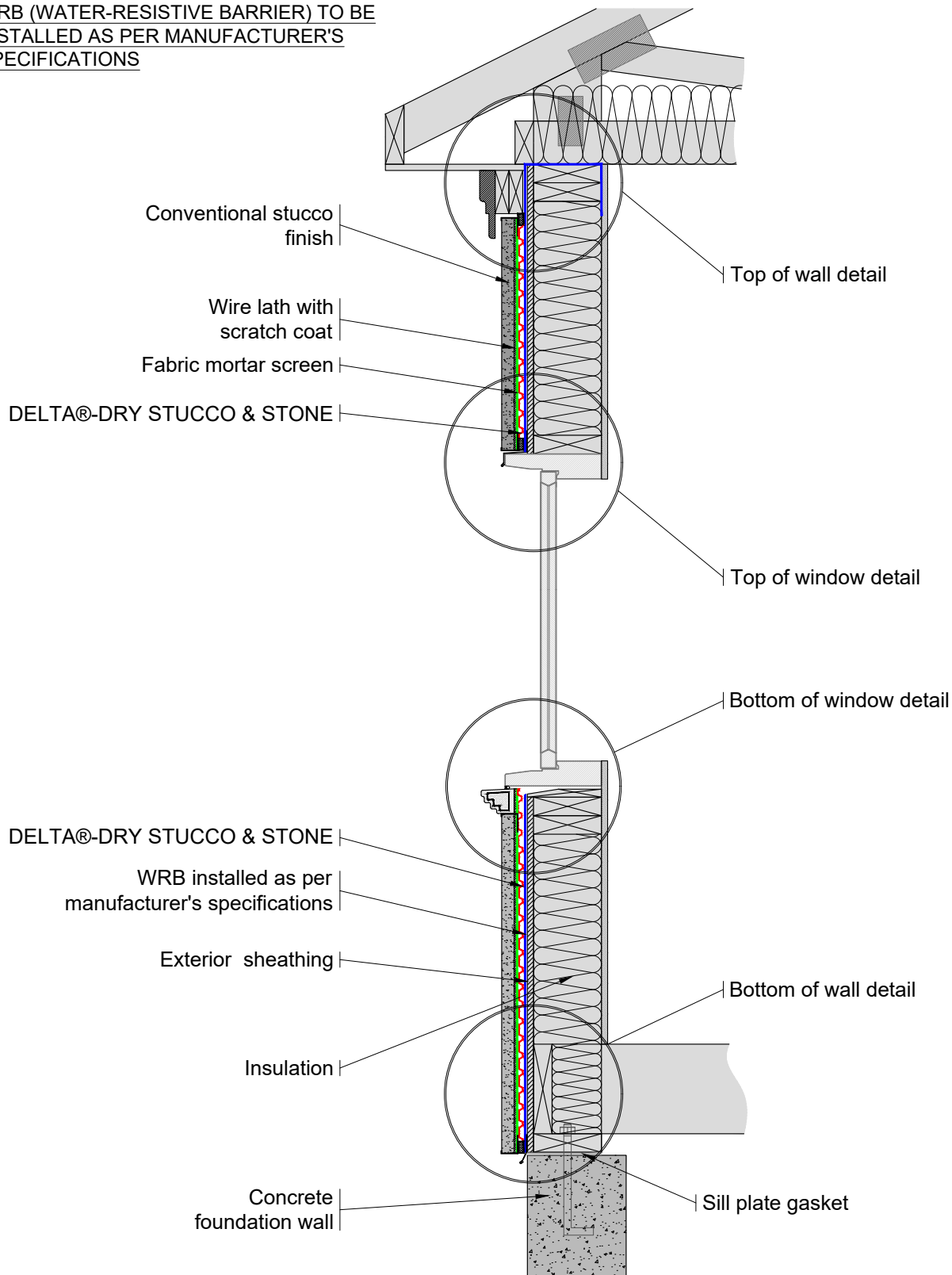
DÖRKEN



4655 DELTA WAY BEAMSVILLE, ON. L0R 1B4 CANADA
1-888-433-5824 or 1-905-563-3255

NOTE:

WRB (WATER-RESISTIVE BARRIER) TO BE
INSTALLED AS PER MANUFACTURER'S
SPECIFICATIONS



****For proper performance of DELTA®-DRY ensure top and bottom remain open to allow ventilation and drainage****

SUBSTANTIAL EFFORT HAS BEEN MADE TO ENSURE THAT THE INFORMATION IN THIS DETAIL DRAWING IS ACCURATE. DÖRKEN SYSTEMS INC. CANNOT ACCEPT RESPONSIBILITY FOR ANY ERRORS OR OVERSIGHTS IN THE USE OF THIS MATERIAL OR IN THE PREPARATION OF ARCHITECTURAL OR ENGINEERING PLANS. THE DESIGN PROFESSIONAL MUST RECOGNIZE THAT NO DESIGN DETAIL CAN SUBSTITUTE FOR EXPERIENCED ENGINEERING AND PROFESSIONAL JUDGEMENT.

TITLE:

**DELTA®-DRY STUCCO & STONE
RAINSCREEN APPLICATION WITH
CONVENTIONAL STUCCO FINISH**

DRAWN BY: Krzysztof Apiasz C. Tech., CPHC®

Date: February 8, 2011

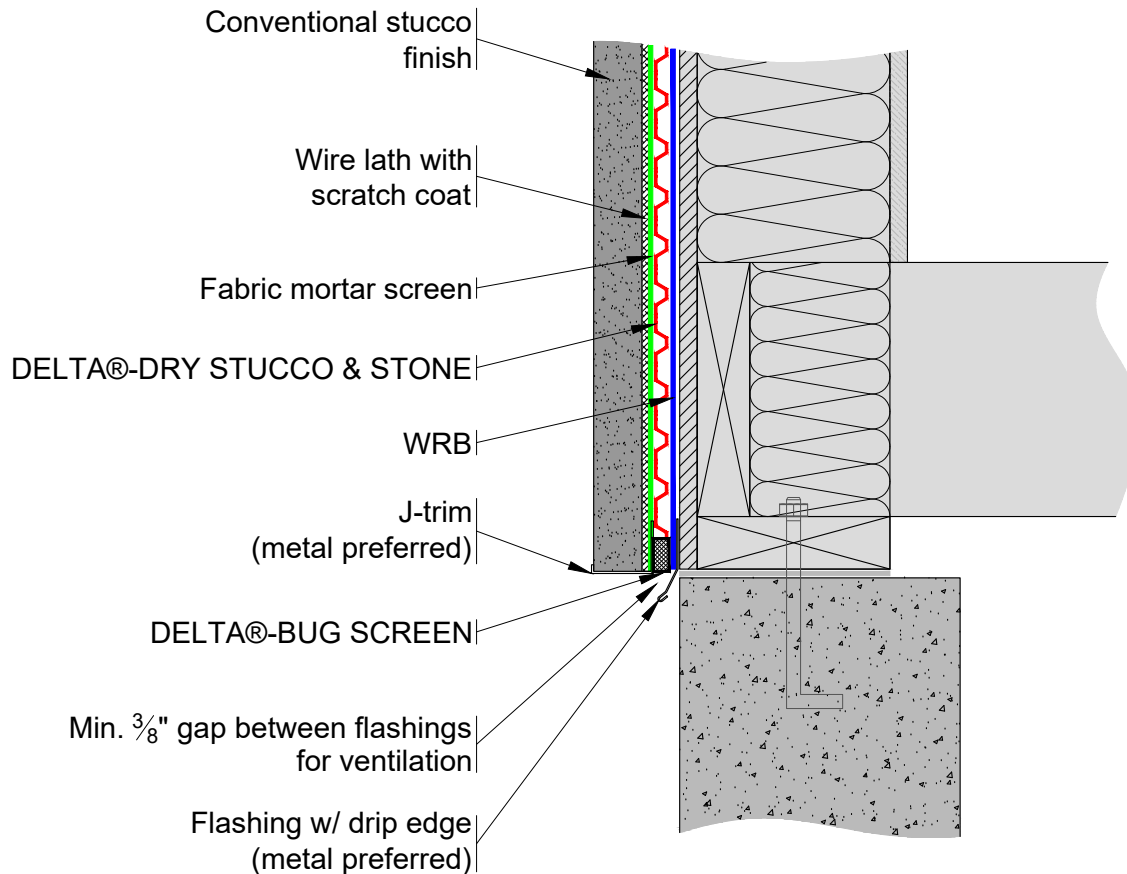
File Name: DRY2_S&S



4655 DELTA WAY BEAMSVILLE, ON. L0R 1B4 CANADA
1-888-433-5824 or 1-905-563-3255

NOTE:
WRB (WATER-RESISTIVE BARRIER) TO BE
INSTALLED AS PER MANUFACTURER'S
SPECIFICATIONS

Option 1.



****For proper performance of DELTA®-DRY ensure top and bottom remain open to allow ventilation and drainage****

SUBSTANTIAL EFFORT HAS BEEN MADE TO ENSURE THAT THE INFORMATION IN THIS DETAIL DRAWING IS ACCURATE. DÖRKEN SYSTEMS INC. CANNOT ACCEPT RESPONSIBILITY FOR ANY ERRORS OR OVERSIGHTS IN THE USE OF THIS MATERIAL OR IN THE PREPARATION OF ARCHITECTURAL OR ENGINEERING PLANS. THE DESIGN PROFESSIONAL MUST RECOGNIZE THAT NO DESIGN DETAIL CAN SUBSTITUTE FOR EXPERIENCED ENGINEERING AND PROFESSIONAL JUDGEMENT.

TITLE:

**DELTA®-DRY STUCCO & STONE RAINSCREEN
 APPLICATION WITH CONVENTIONAL STUCCO FINISH
 BOTTOM OF WALL DETAIL OPTION 1**

DRAWN BY: Krzysztof Apiasz C. Tech., CPHC®

DATE: February 8, 2011
 SCALE: NTS

FILE NAME:
 DRY2_S&SB1

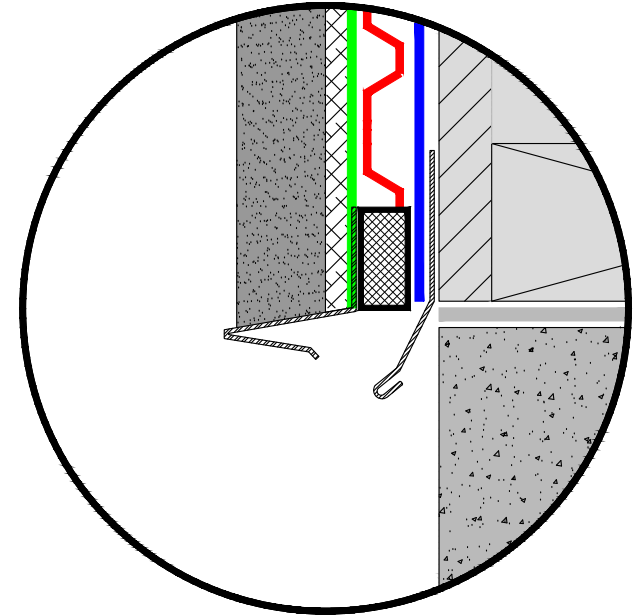
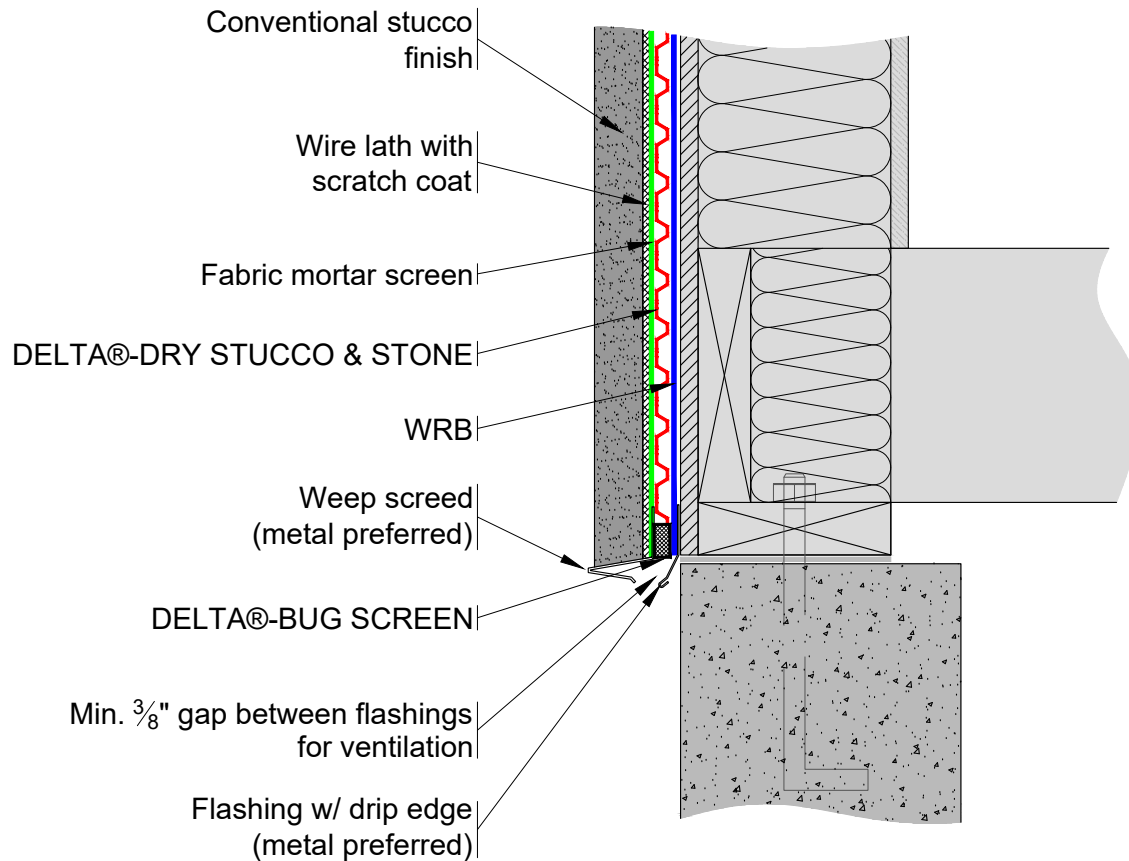
DÖRKEN



4655 DELTA WAY BEAMSVILLE, ON. L0R 1B4 CANADA
 1-888-433-5824 or 1-905-563-3255

NOTE:
WRB (WATER-RESISTIVE BARRIER) TO BE
INSTALLED AS PER MANUFACTURER'S
SPECIFICATIONS

Option 2.



****For proper performance of DELTA®-DRY ensure top and bottom remain open to allow ventilation and drainage****

SUBSTANTIAL EFFORT HAS BEEN MADE TO ENSURE THAT THE INFORMATION IN THIS DETAIL DRAWING IS ACCURATE. DÖRKEN SYSTEMS INC. CANNOT ACCEPT RESPONSIBILITY FOR ANY ERRORS OR OVERSIGHTS IN THE USE OF THIS MATERIAL OR IN THE PREPARATION OF ARCHITECTURAL OR ENGINEERING PLANS. THE DESIGN PROFESSIONAL MUST RECOGNIZE THAT NO DESIGN DETAIL CAN SUBSTITUTE FOR EXPERIENCED ENGINEERING AND PROFESSIONAL JUDGEMENT.

TITLE:

DELTA®-DRY STUCCO & STONE RAINSCREEN APPLICATION WITH CONVENTIONAL STUCCO FINISH BOTTOM OF WALL DETAIL OPTION 2

DRAWN BY: Krzysztof Apiasz C. Tech., CPHC®

DATE: February 8, 2011
SCALE: NTS

FILE NAME:
DRY2_S&SB2

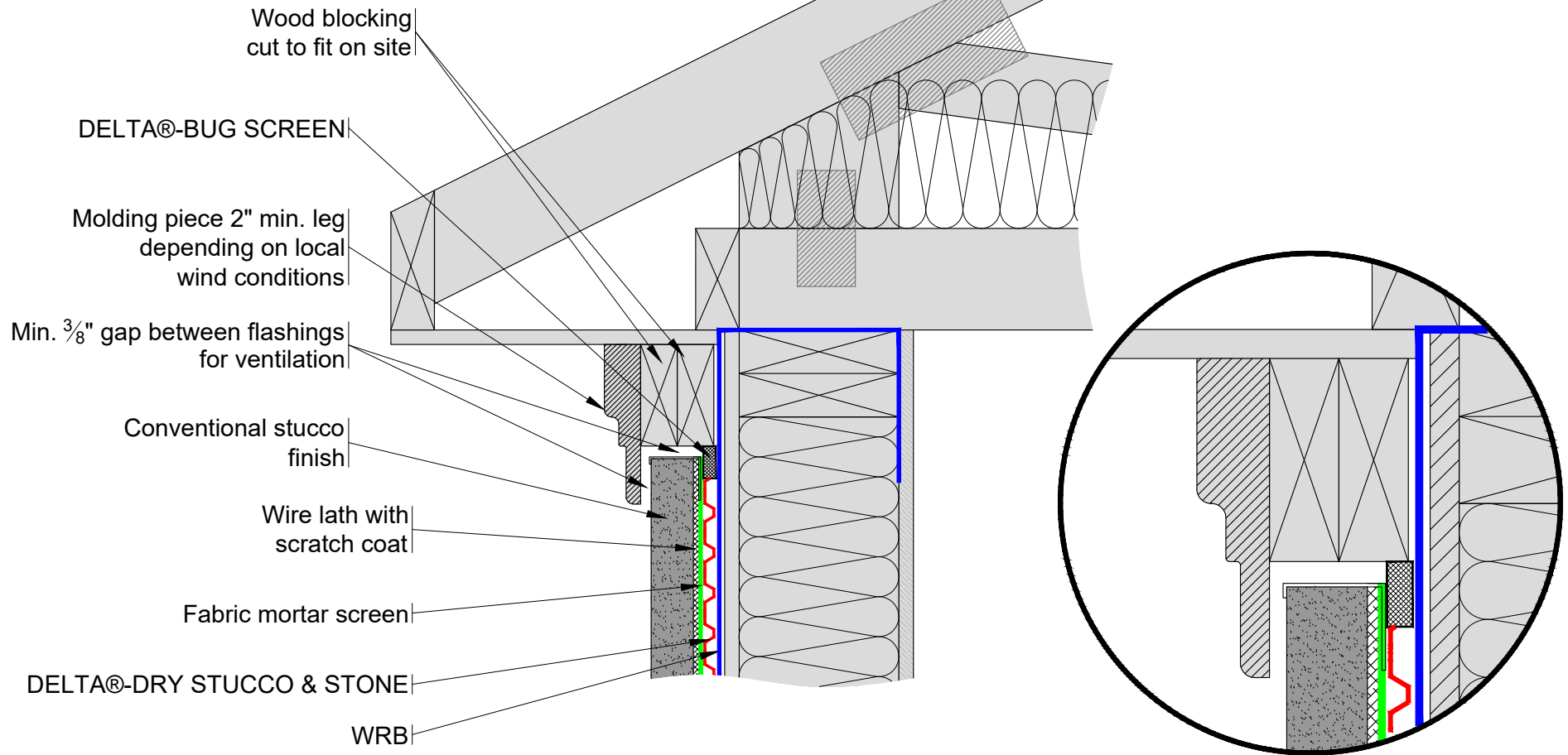
DÖRKEN



4655 DELTA WAY BEAMSVILLE, ON. L0R 1B4 CANADA
1-888-433-5824 or 1-905-563-3255

NOTE:
WRB (WATER-RESISTIVE BARRIER) TO BE
INSTALLED AS PER MANUFACTURER'S
SPECIFICATIONS

Option 1.



For proper performance of DELTA®-DRY ensure top and bottom remain open to allow ventilation and drainage

SUBSTANTIAL EFFORT HAS BEEN MADE TO ENSURE THAT THE INFORMATION IN THIS DETAIL DRAWING IS ACCURATE. DÖRKEN SYSTEMS INC. CANNOT ACCEPT RESPONSIBILITY FOR ANY ERRORS OR OVERSIGHTS IN THE USE OF THIS MATERIAL OR IN THE PREPARATION OF ARCHITECTURAL OR ENGINEERING PLANS. THE DESIGN PROFESSIONAL MUST RECOGNIZE THAT NO DESIGN DETAIL CAN SUBSTITUTE FOR EXPERIENCED ENGINEERING AND PROFESSIONAL JUDGEMENT.

TITLE:

DELTA®-DRY STUCCO & STONE RAINSCREEN APPLICATION WITH CONVENTIONAL STUCCO FINISH TOP OF WALL DETAIL OPTION 1

DRAWN BY: Krzysztof Apiasz C. Tech., CPHC®

DATE: February 8, 2011
SCALE: NTS

FILE NAME:
DRY2_S&ST1

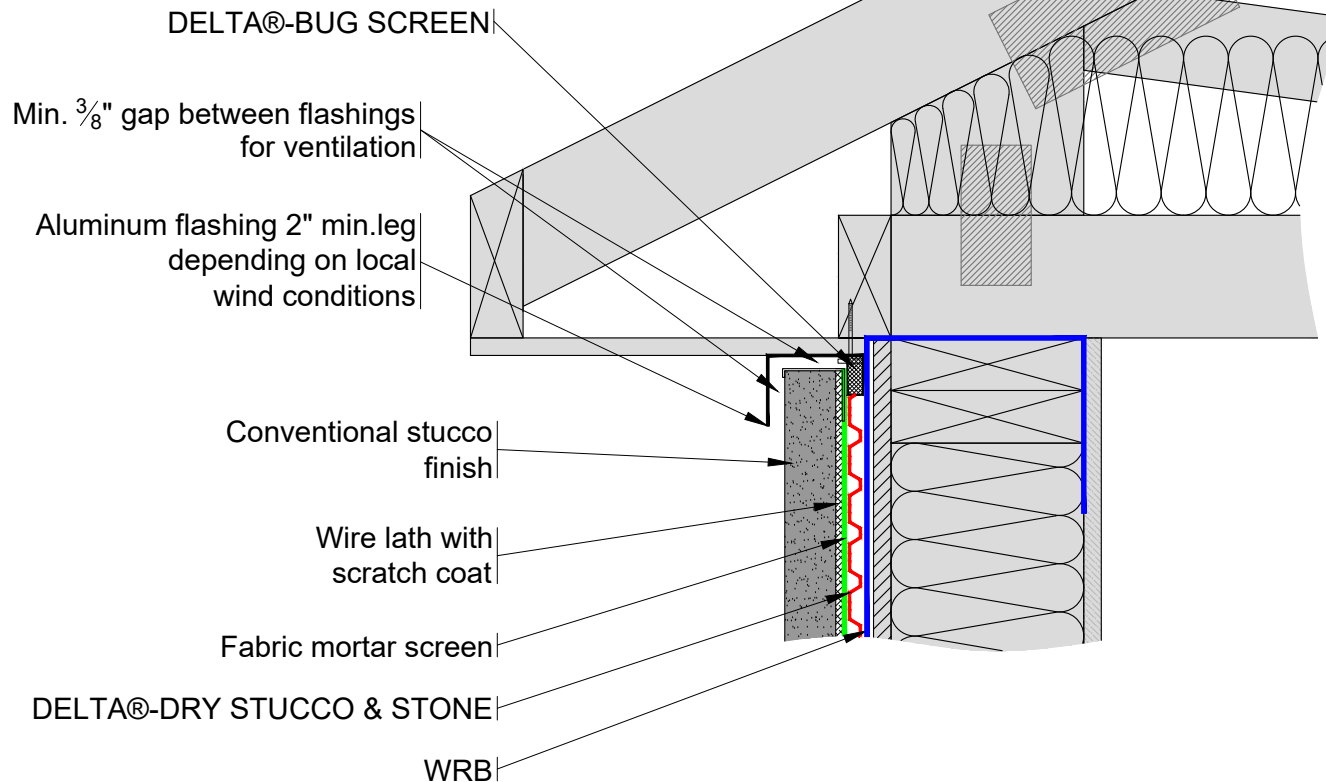
DÖRKEN



4655 DELTA WAY BEAMSVILLE, ON. L0R 1B4 CANADA
1-888-433-5824 or 1-905-563-3255

NOTE:
WRB (WATER-RESISTIVE BARRIER) TO BE
INSTALLED AS PER MANUFACTURER'S
SPECIFICATIONS

Option 2. "L" flashing



****For proper performance of DELTA®-DRY ensure top and bottom remain open to allow ventilation and drainage****

SUBSTANTIAL EFFORT HAS BEEN MADE TO ENSURE THAT THE INFORMATION IN THIS DETAIL DRAWING IS ACCURATE. DÖRKEN SYSTEMS INC. CANNOT ACCEPT RESPONSIBILITY FOR ANY ERRORS OR OVERSIGHTS IN THE USE OF THIS MATERIAL OR IN THE PREPARATION OF ARCHITECTURAL OR ENGINEERING PLANS. THE DESIGN PROFESSIONAL MUST RECOGNIZE THAT NO DESIGN DETAIL CAN SUBSTITUTE FOR EXPERIENCED ENGINEERING AND PROFESSIONAL JUDGEMENT.

TITLE:

DELTA®-DRY STUCCO & STONE RAINSCREEN APPLICATION WITH CONVENTIONAL STUCCO FINISH TOP OF WALL DETAIL OPTION 2

DRAWN BY: Krzysztof Apiasz C. Tech., CPHC®

DATE: February 8, 2011
SCALE: NTS

FILE NAME:
DRY2_S&ST2

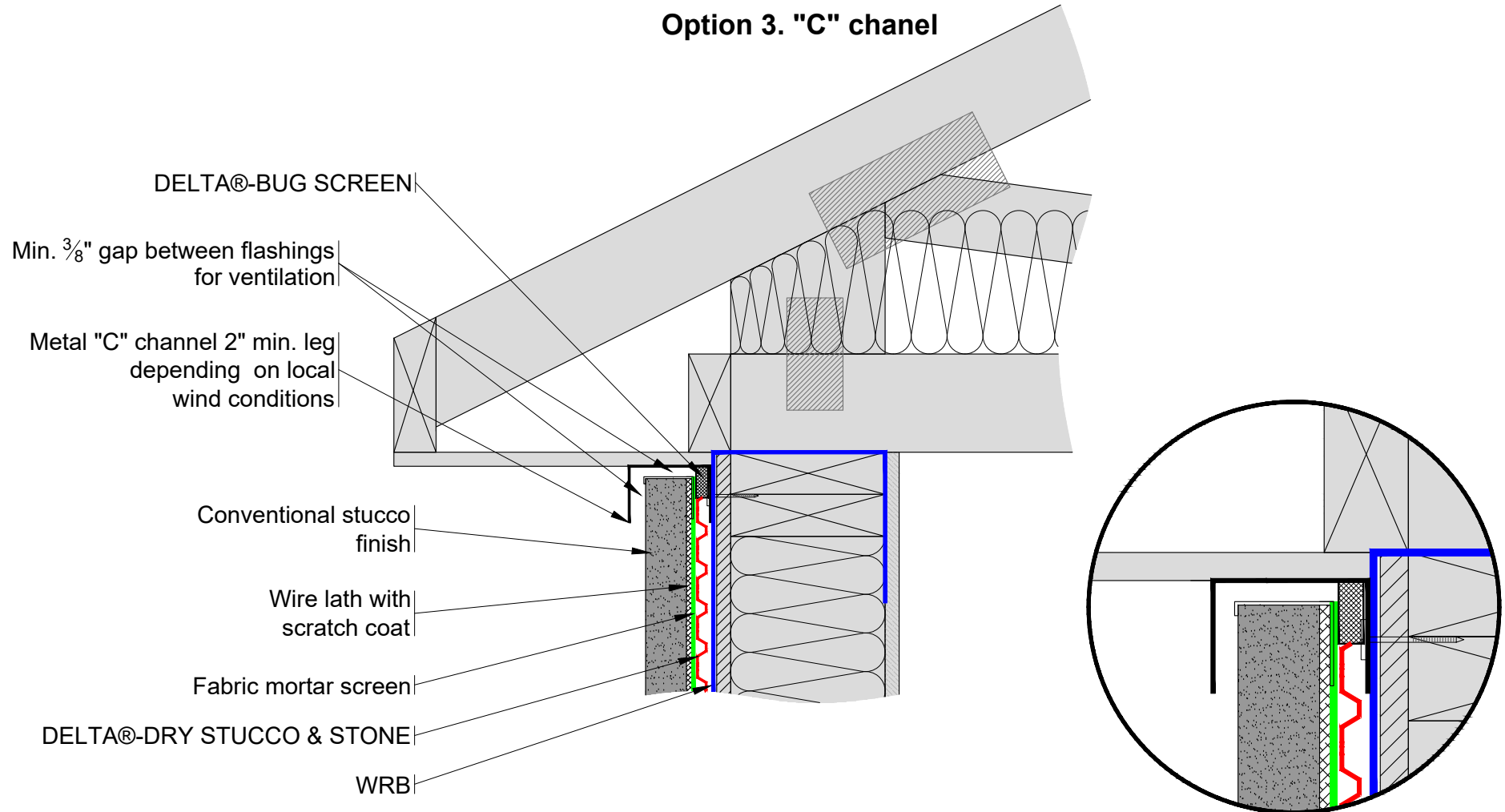
DÖRKEN



4655 DELTA WAY BEAMSVILLE, ON. L0R 1B4 CANADA
1-888-433-5824 or 1-905-563-3255

NOTE:
WRB (WATER-RESISTIVE BARRIER) TO BE
INSTALLED AS PER MANUFACTURER'S
SPECIFICATIONS

Option 3. "C" chanel



For proper performance of DELTA®-DRY ensure top and bottom remain open to allow ventilation and drainage

SUBSTANTIAL EFFORT HAS BEEN MADE TO ENSURE THAT THE INFORMATION IN THIS DETAIL DRAWING IS ACCURATE. DÖRKEN SYSTEMS INC. CANNOT ACCEPT RESPONSIBILITY FOR ANY ERRORS OR OVERSIGHTS IN THE USE OF THIS MATERIAL OR IN THE PREPARATION OF ARCHITECTURAL OR ENGINEERING PLANS. THE DESIGN PROFESSIONAL MUST RECOGNIZE THAT NO DESIGN DETAIL CAN SUBSTITUTE FOR EXPERIENCED ENGINEERING AND PROFESSIONAL JUDGEMENT.

TITLE:

DELTA®-DRY RAINSCREEN APPLICATION WITH CONVENTIONAL STUCCO FINISH TOP OF WALL DETAIL OPTION 3

DRAWN BY: Krzysztof Apiasz C. Tech., CPHC®

DATE: February 8, 2011
SCALE: NTS

FILE NAME:
DRY2_S&ST3

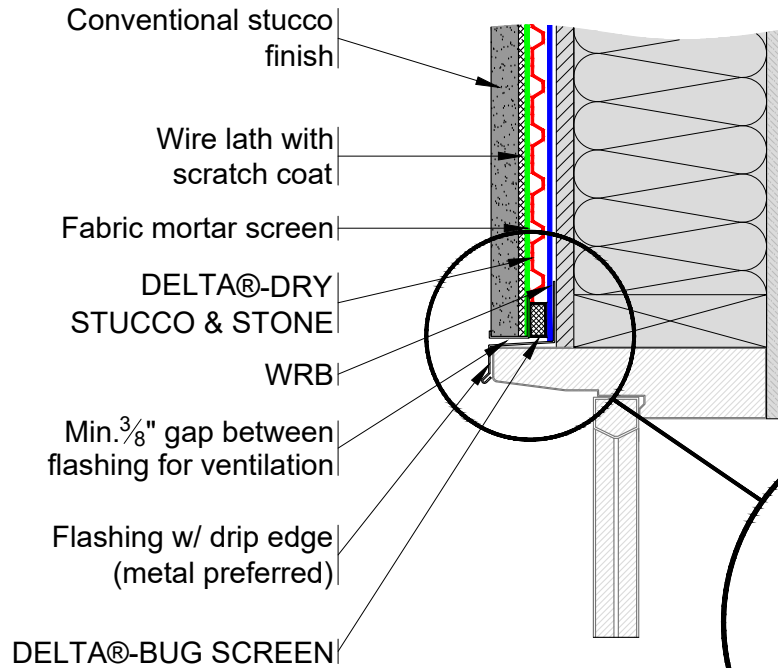
DÖRKEN



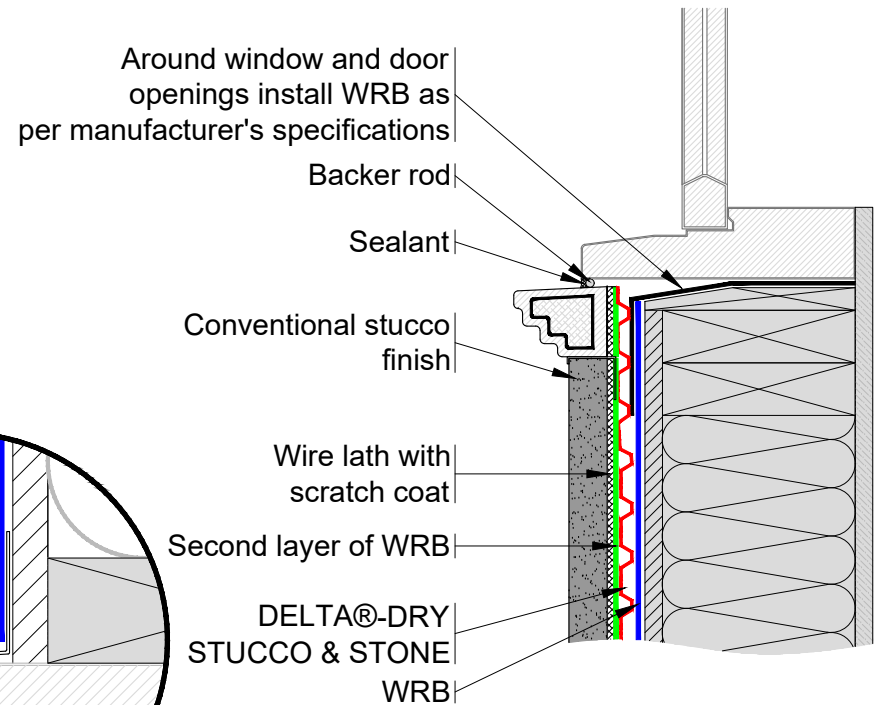
4655 DELTA WAY BEAMSVILLE, ON. L0R 1B4 CANADA
1-888-433-5824 or 1-905-563-3255

NOTE:
WRB (WATER-RESISTIVE BARRIER) TO BE
INSTALLED AS PER MANUFACTURER'S
SPECIFICATIONS

TOP OF WINDOW DETAIL



BOTTOM OF WINDOW DETAIL



****For proper performance of DELTA®-DRY ensure top and bottom remain open to allow ventilation and drainage****

SUBSTANTIAL EFFORT HAS BEEN MADE TO ENSURE THAT THE INFORMATION IN THIS DETAIL DRAWING IS ACCURATE. DÖRKEN SYSTEMS INC. CANNOT ACCEPT RESPONSIBILITY FOR ANY ERRORS OR OVERSIGHTS IN THE USE OF THIS MATERIAL OR IN THE PREPARATION OF ARCHITECTURAL OR ENGINEERING PLANS. THE DESIGN PROFESSIONAL MUST RECOGNIZE THAT NO DESIGN DETAIL CAN SUBSTITUTE FOR EXPERIENCED ENGINEERING AND PROFESSIONAL JUDGEMENT.

TITLE:

DELTA®-DRY STUCCO & STONE RAINSCREEN APPLICATION WITH CONVENTIONAL STUCCO FINISH WINDOW DETAIL

DRAWN BY: Krzysztof Apiasz C. Tech., CPHC®

DATE: February 8, 2011
SCALE: NTS

FILE NAME:
DRY2_S&SW1

DÖRKEN



4655 DELTA WAY BEAMSVILLE, ON. L0R 1B4 CANADA
1-888-433-5824 or 1-905-563-3255