

SUBSTANTIAL EFFORT HAS BEEN MADE TO ENSURE THAT THE INFORMATION IN THIS DETAIL DRAWING IS ACCURATE. DÖRKEN SYSTEMS INC. CANNOT ACCEPT RESPONSIBILITY FOR ANY ERRORS OR OVERSIGHTS IN THE USE OF THIS MATERIAL OR IN THE PREPARATION OF ARCHITECTURAL OR ENGINEERING PLANS. THE DESIGN PROFESSIONAL MUST RECOGNIZE THAT NO DESIGN DETAIL CAN SUBSTITUTE FOR EXPERIENCED ENGINEERING AND PROFESSIONAL JUDGEMENT.

TITLE:

TYPICAL DELTA@-MS INSTALLATION DETAIL ON
POURED CONCRETE FOUNDATION WALL

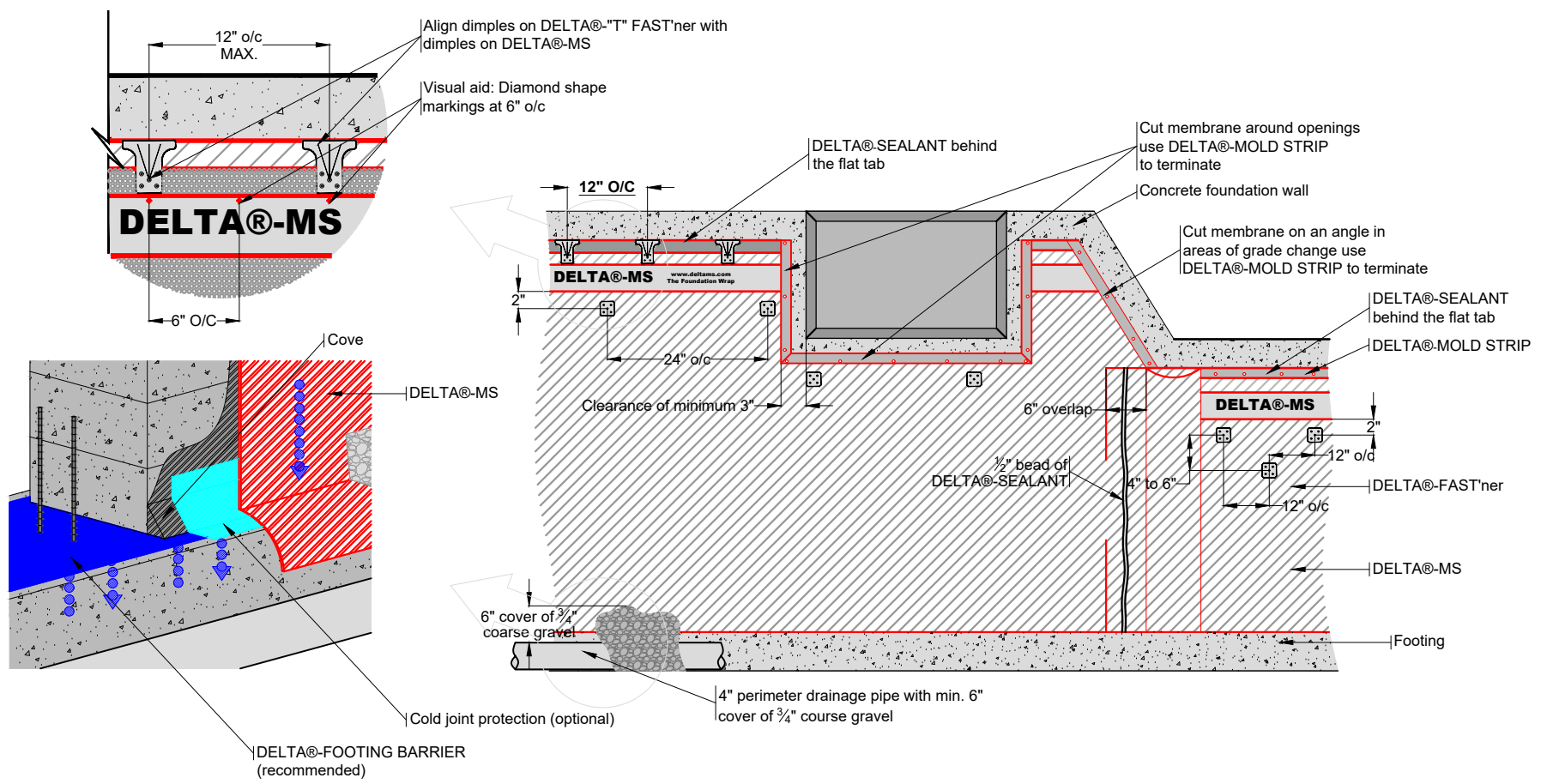
DRAWN BY: Krzysztof Apriasz C. Tech., CPHC®

DATE: FEBRUARY 26, 2010
SCALE: NTS

FILE NAME:
DELTA-MS1



4655 DELTA WAY BEAMSVILLE, ON. L0R 1B4 CANADA
1-888-433-5824 or 1-905-563-3255



SUBSTANTIAL EFFORT HAS BEEN MADE TO ENSURE THAT THE INFORMATION IN THIS DETAIL DRAWING IS ACCURATE. DÖRKEN SYSTEMS INC. CANNOT ACCEPT RESPONSIBILITY FOR ANY ERRORS OR OVERSIGHTS IN THE USE OF THIS MATERIAL OR IN THE PREPARATION OF ARCHITECTURAL OR ENGINEERING PLANS. THE DESIGN PROFESSIONAL MUST RECOGNIZE THAT NO DESIGN DETAIL CAN SUBSTITUTE FOR EXPERIENCED ENGINEERING AND PROFESSIONAL JUDGEMENT.

TITLE:

TYPICAL DELTA®-MS INSTALLATION DETAIL ON PARGED CONCRETE BLOCK FOUNDATION WALL

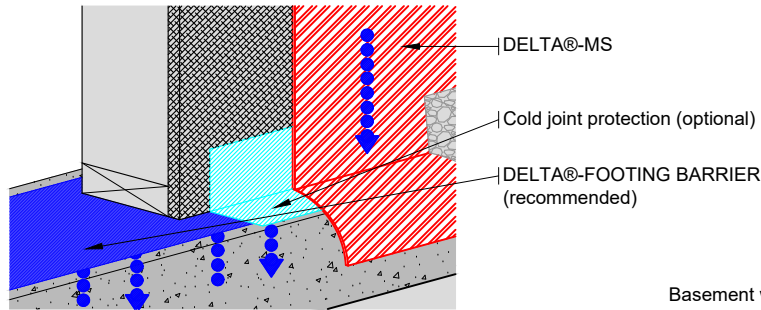
DRAWN BY: Krzysztof Apriasz C. Tech., CPHC®

DATE: FEBRUARY 26, 2010
SCALE: NTS

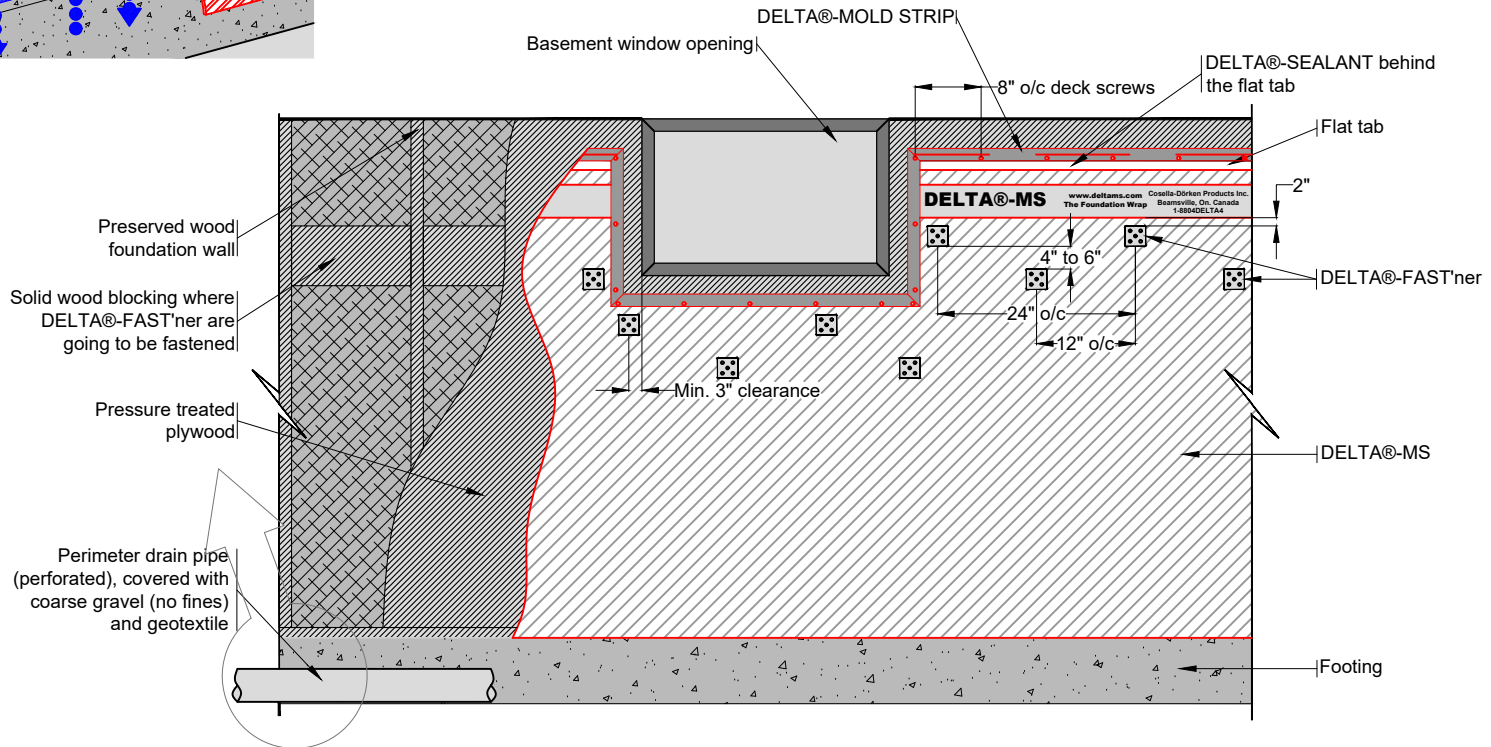
FILE NAME:
DELTA-MS2



4655 DELTA WAY BEAMSVILLE, ON. L0R 1B4 CANADA
1-888-433-5824 or 1-905-563-3255



Note:
Only to be used where preserved wood foundation
are permitted by the local building code.



SUBSTANTIAL EFFORT HAS BEEN MADE TO ENSURE THAT THE INFORMATION IN THIS DETAIL DRAWING IS ACCURATE. DÖRKEN SYSTEMS INC. CANNOT ACCEPT RESPONSIBILITY FOR ANY ERRORS OR OVERSIGHTS IN THE USE OF THIS MATERIAL OR IN THE PREPARATION OF ARCHITECTURAL OR ENGINEERING PLANS. THE DESIGN PROFESSIONAL MUST RECOGNIZE THAT NO DESIGN DETAIL CAN SUBSTITUTE FOR EXPERIENCED ENGINEERING AND PROFESSIONAL JUDGEMENT.

TITLE:

DELTA@-MS INSTALLATION ON PRESERVED WOOD FOUNDATION WALL

DRAWN BY: Krzysztof Apriasz C. Tech., CPHC®

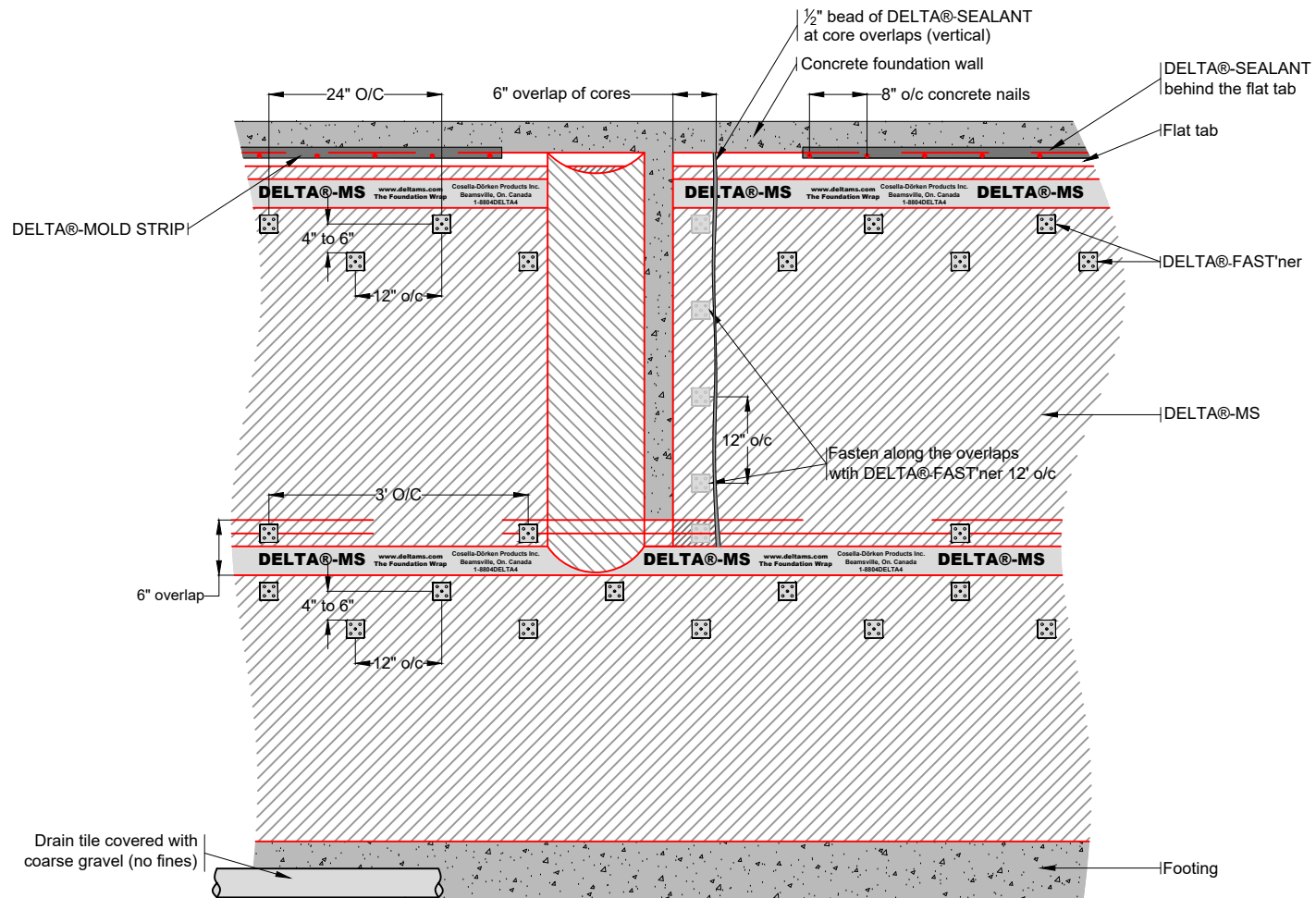
DATE: June 23, 2009
SCALE: NTS

FILE NAME:
DELTA-MS3

DÖRKEN



4655 DELTA WAY BEAMSVILLE, ON. L0R 1B4 CANADA
1-888-433-5824 or 1-905-563-3255



SUBSTANTIAL EFFORT HAS BEEN MADE TO ENSURE THAT THE INFORMATION IN THIS DETAIL DRAWING IS ACCURATE. DÖRKEN SYSTEMS INC. CANNOT ACCEPT RESPONSIBILITY FOR ANY ERRORS OR OVERSIGHTS IN THE USE OF THIS MATERIAL OR IN THE PREPARATION OF ARCHITECTURAL OR ENGINEERING PLANS. THE DESIGN PROFESSIONAL MUST RECOGNIZE THAT NO DESIGN DETAIL CAN SUBSTITUTE FOR EXPERIENCED ENGINEERING AND PROFESSIONAL JUDGEMENT.

TITLE:

VERTICAL / HORIZONTAL OVERLAPS

DRAWN BY: Krzysztof Apriasz C. Tech., CPHC®

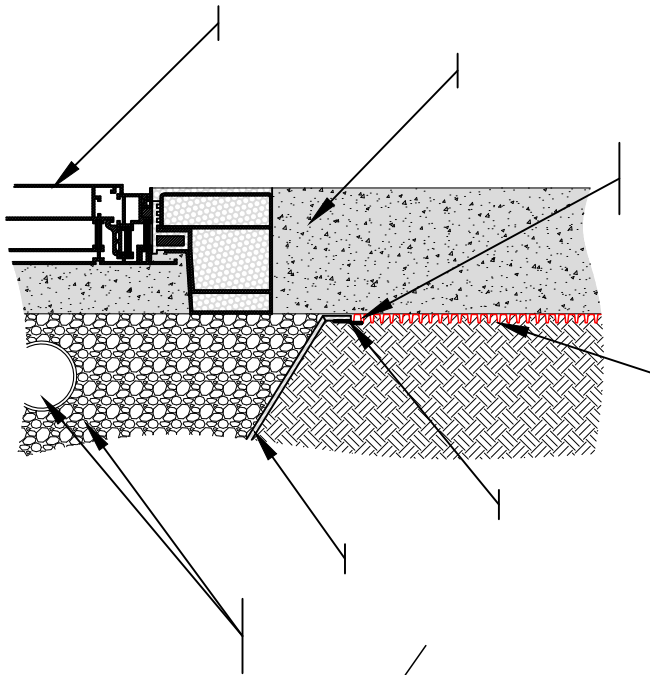
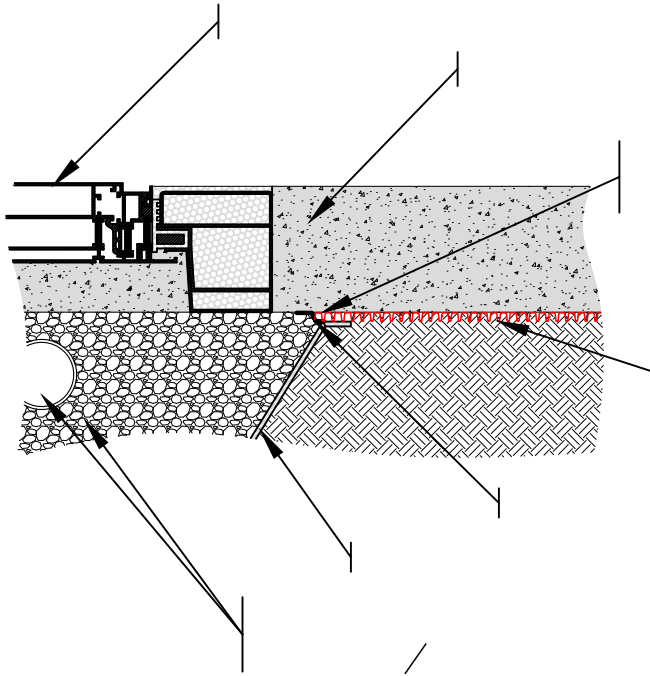
DATE: February 26, 2010
SCALE: NTS

FILE NAME:
DELTA-MS4

DÖRKEN

DELTA

4655 DELTA WAY BEAMSVILLE, ON. L0R 1B4 CANADA
 1-888-433-5824 or 1-905-563-3255



**

CPHC®

 **DÖRKEN**

DELTA®