

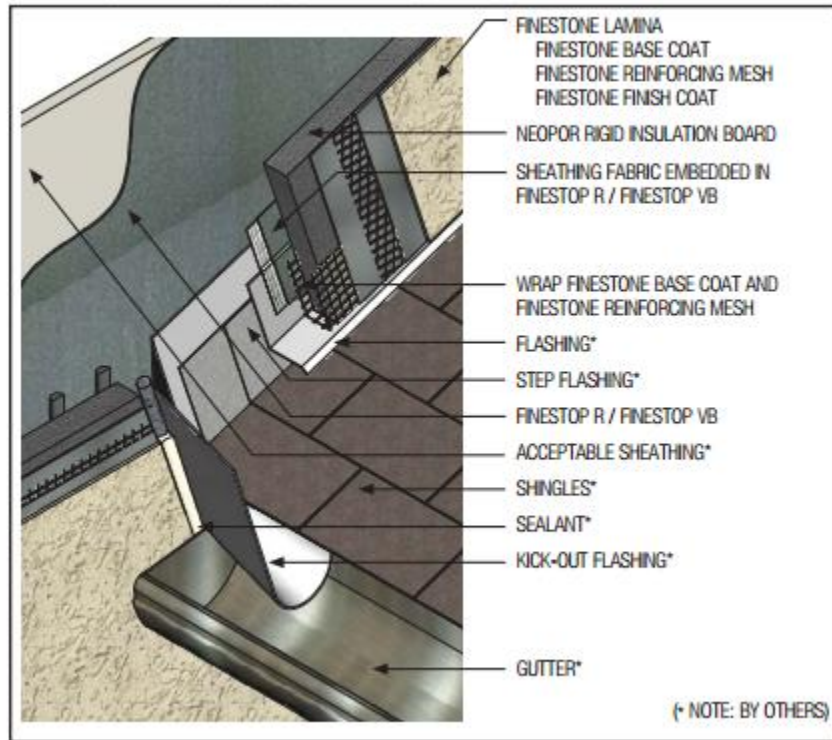
Pebbletex Platinum CI

Typical details for an exterior cladding system featuring Neopor® rigid insulation board

Notes:

- All terminations must be fully encapsulated with mesh reinforced base coat.
- Ensure a means for drainage is provided at system termination at roof.
- Terminate system a minimum of 50 mm (2") above sloped roof.
- Ensure step flashing is a minimum of 50 mm (2") behind system.
- Kick-out flashing: sealed or soldered seams, recommended minimum 100 mm (4") in height, extend minimum 50 mm (2") from system and angled to direct water into gutter / away from wall surface.
- Do not apply finish to areas that will receive sealant.

TYPICAL KICK-OUT FLASHING



PCI-28 0614

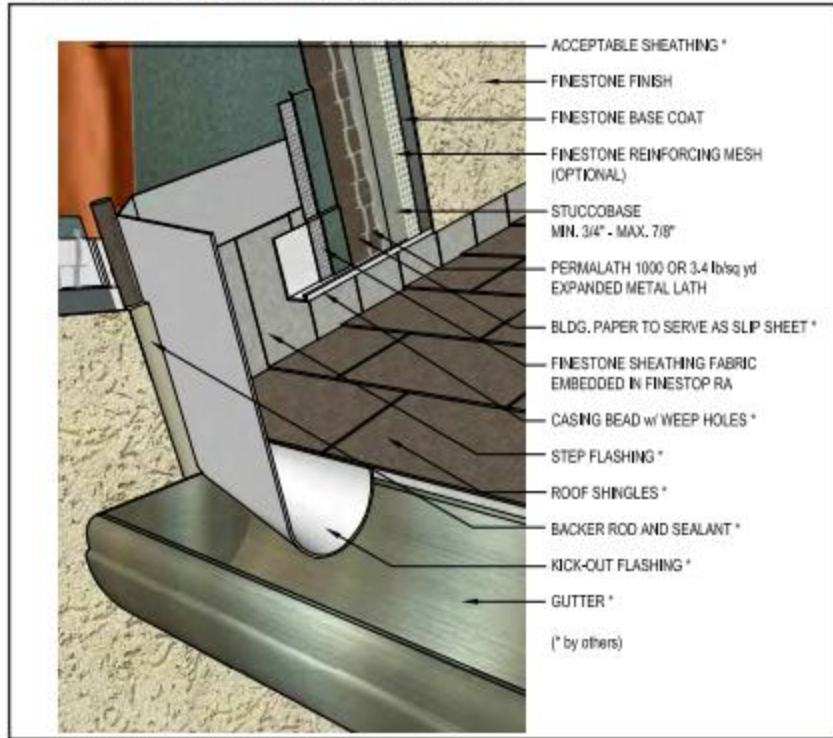
Finestone Stucco Plus Wall System

Premium cement plaster stucco with a fluid air/water-resistive barrier

Notes:

- Verify all materials are installed in accordance with installation instructions and applicable code.
- Terminate Stucco Wall System a minimum of 50 mm (2") above roof.
- Ensure step flashing is a minimum 50 mm (2") behind Finestone Stucco Wall System.
- Kick-out flashing a minimum 100 mm (4") in height.
- Kick-out flashing shall be angled a minimum 100° with seams sealed or soldered.
- Ensure a means for drainage is provided at system termination at roof.

TYPICAL KICK-OUT FLASHING



FSP-16 0211

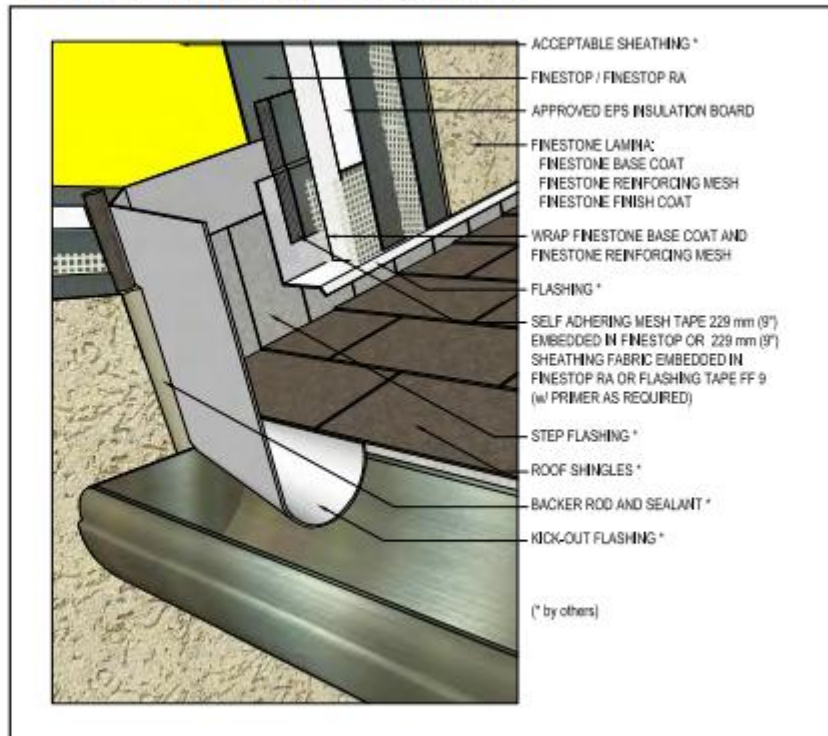
Pebbletex DCA Design

Water Drainage Class PB Exterior Insulation and Finish System

Notes:

- Verify all materials are installed in accordance with current installation instructions.
- All terminations must be fully encapsulated with mesh reinforced base coat.
- Ensure a means for drainage is provided at system termination at roof.
- Terminate system a minimum of 50 mm (2") above roof.
- Ensure step flashing is a minimum of 50 mm (2") behind system.
- Kick-out flashing shall be a minimum of 102 mm (4") in height.
- Do not apply finish to areas that will receive sealant.

TYPICAL KICK-OUT FLASHING



DCA-27 0111