



Inner-Safe™ Sell Tell

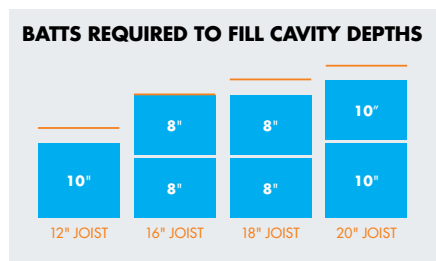
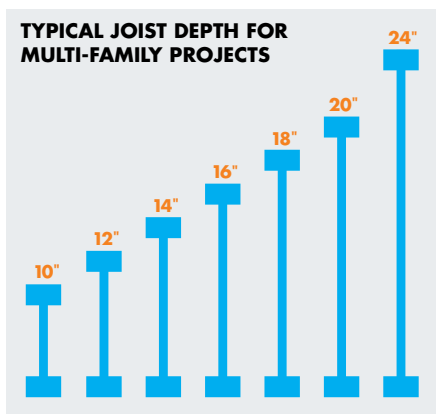
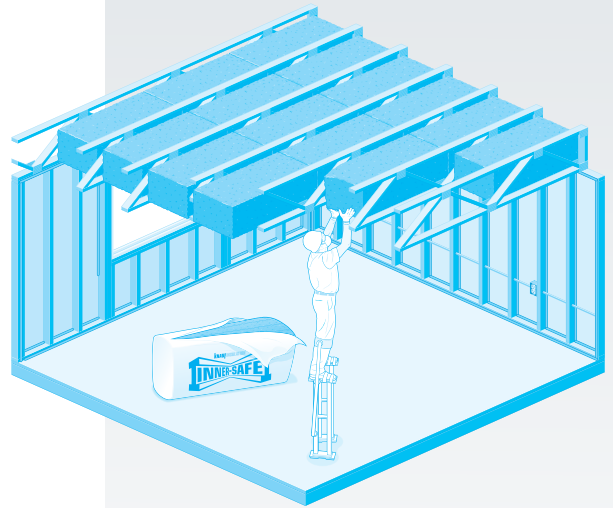
Inner-Safe Concealed Space Batt Insulation is a non-combustible product that meets and exceeds NFPA 13 Standard requirements—saving time and money on multi-family construction projects by offering a superior alternative to sprinklers in interstitial spaces. Inner-Safe works with the typical joist types found in multi-family projects: I-Joist and Open Web.

DEFINING NFPA 13 STANDARD

NFPA 13, SECTION 8.15.1.2.7: Concealed spaces filled with noncombustible insulation shall not require sprinkler protection.

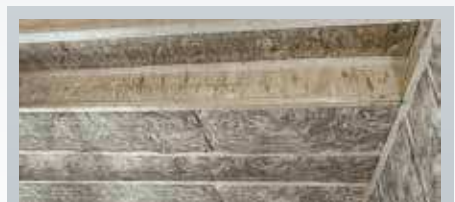
NFPA 13, SECTION 8.15.1.2.7.1: A maximum 2 in. air gap at the top of the space shall be permitted.

The language above, excerpted from NFPA 13 Standard, highlights revised sections that address requirements for the filling of interstitial spaces. Note that non-combustible insulation is now permitted—and that the code allows a maximum two-inch air gap at the top of the space.



The chart above shows a representative sample of different configurations, in single- or double-batt configurations, that meet NFPA 13 Standard requirements.

Inner-Safe Concealed Space Batt Insulation works with all common joist types used in multi-family construction.



Inner-Safe Concealed Space Batt installed in I-Joist interstitial space.



Inner-Safe Concealed Space Batt installed in Open Web interstitial space.



What Inner-Safe™ brings to your project:

Simplicity

- Satisfies a range of joist thicknesses from 8" to 24"
- Easier to estimate and allocate labor
- Friction-fit into cavities—no fasteners or support needed
- Same batt crews for walls and floor
- Provides easier inspection, via a depth indicator on its packaging

Advantages over sprinklers

- Inner-Safe requires no specialized labor or equipment to install
- Eliminates long-term maintenance and inspection costs
- Inner-Safe enhances thermal separation and noise reduction

Advantages over loose-fill and traditional batt insulation

- Inner-Safe Concealed Space Batt Insulation requires no additional, specialized equipment—such as a blowing wool truck—on the jobsite
- Eliminates additional labor and netting material needed with loose-fill installs
- Inner-Safe installation costs are roughly half of a loose-fill application



Knauf Insulation, Inc.
One Knauf Drive
Shelbyville, IN 46176

Sales and Marketing (800) 825-4434, ext. 8485
Technical Support..... (800) 825-4434, ext. 8727

www.knaufinsulation.us

This product is covered by one or more U.S. and/or other patents.
See www.knaufinsulation.us/patents

© 2016 Knauf Insulation, Inc. BHSSL 11-16

INSTALLATION PROCESS



STEP 1: Remove product from package



STEP 2: Insert insulation into interstitial space



STEP 3: Mark and install validation tag

USE KNAUF INSULATION THROUGHOUT YOUR PROJECT

In multi-family and other construction projects, our products work together to seal the building envelope—offering enhanced comfort, energy-efficiency and sustainability.



Learn more about our full product line now, by visiting knaufinsulation.us/en/products

KNAUFINSULATION
it's time to save energy