

JetSpray™ Thermal

Spray-On Insulation System
Mold Resistant and Formaldehyde Free

Thermal and Sound Control Insulation



JetSpray™ Thermal



JetSpray™ Six-Step Installation Process

This simple step-by-step guide will help you install JetSpray Thermal Insulation.

It's easy to install JetSpray Thermal Blow-in Insulation. This guide will provide you with a list of necessary materials and equipment, and six steps to successfully install JetSpray Thermal Insulation. Please review this guide in full before starting installation. If you have any questions, please call Knauf Service at 1-800-825-4434, ext. 8727.

Recommended Materials and Equipment

Core Items:

- JetSpray Thermal Insulation
- Blowing wool machine with required hoses and vacuum collector box
- Water pump, tank and supply line
- Portable generator
- Scrubber
- Vacuum with required hoses
- JetSpray nozzle
- Personal Protective Equipment (PPE)

Additional Items:

- Extra spray tips
- Water bucket
- Densi-Checker™
- Portable digital scale (Fish Scale) 10 lb. min.
- Portable moisture meter
- Netting
- Staples and stapler
- Poly film
- Duct tape
- Brooms
- Extension cords
- Ladder/Scaffold
- Hose reducers and couplers
- Batt insulation
- Portable lighting, as needed
- Vented vacuum bag/vented bag for measurement
- EcoSeal™ Plus or other air sealant
- Knauf mobile app

KNAUF INSULATION
it's time to save energy

1 JOBSITE PREPARATION

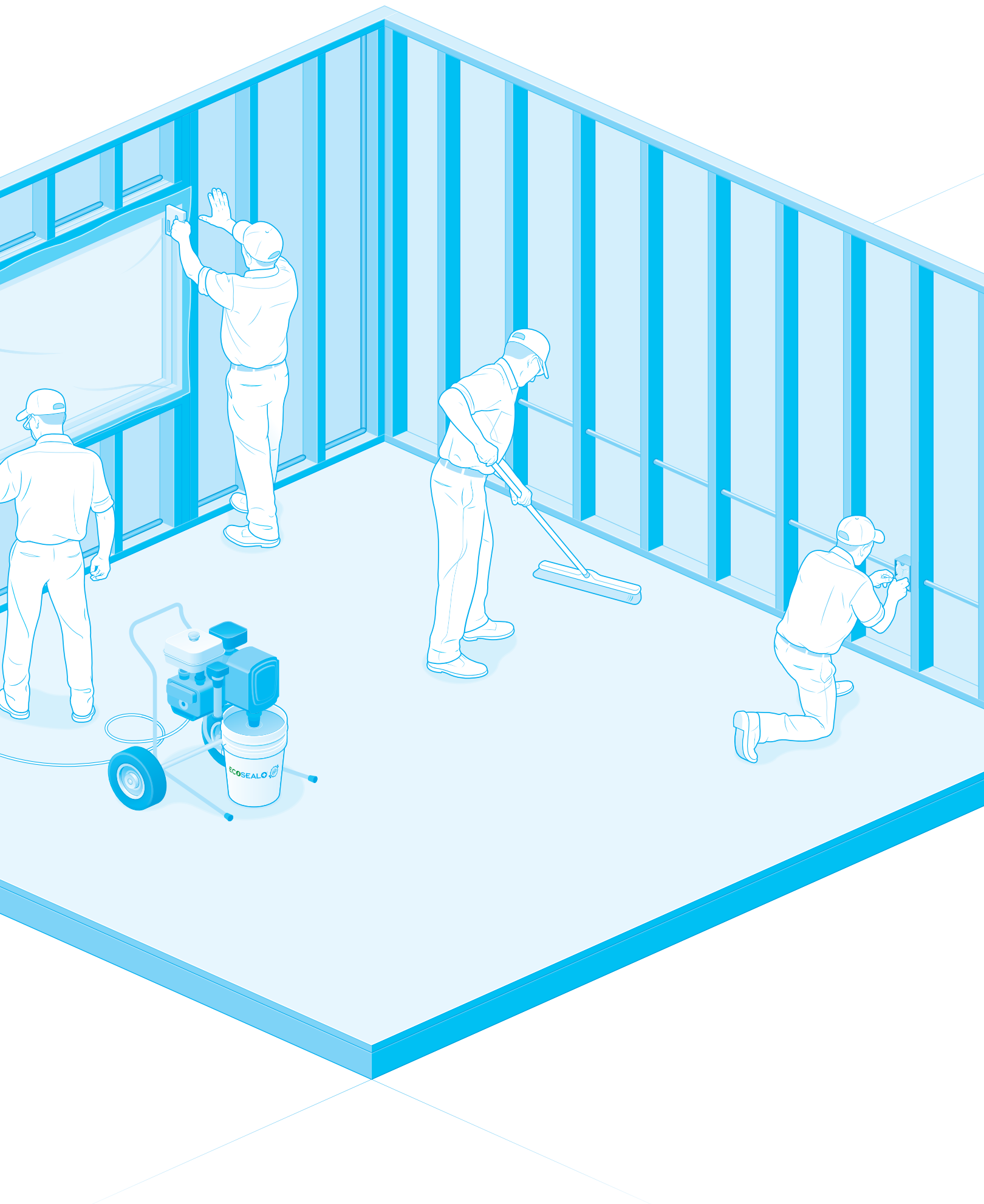
- Sweep and remove construction debris, dust, dirt and other trash from the work area.
- Net any unbacked walls.
- Mask and cover electrical boxes, HVAC duct/return openings and windows.
- Remove or properly secure any nails or staples that will impede or damage the scrubber.
- Air seal any gaps, joints and or penetrations in the wall cavities; chink or backfill any large gaps or cracks prior to air sealing. Knauf recommends using EcoSeal Plus™ as a high-performance air sealing system.

The JetSpray™ System from Knauf Insulation.

Designed for quick and easy installations that save you time and money, JetSpray allows you to easily insulate difficult-to-reach areas, and provides a wide range of benefits:

- Cost-efficient thermal protection
- Bright, clean-looking finish
- Grade I installations
- Formaldehyde-free
- Drywall can typically be installed within 24 hours
- Less product waste
- Efficient way to meet or exceed minimum code requirements







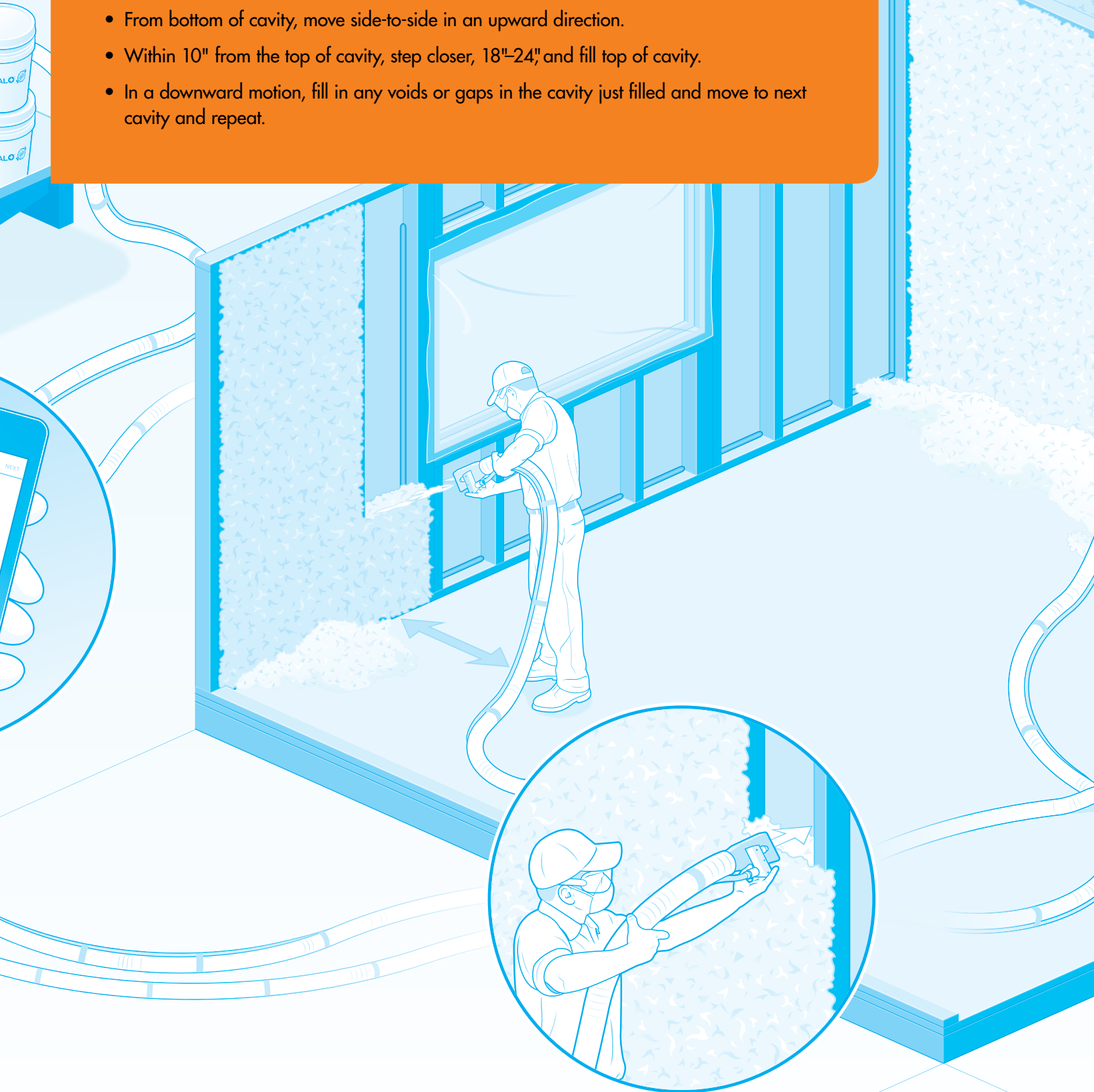
2 EQUIPMENT CHECK AND SETUP

- Set up blowing wool machine (see equipment settings).
- Set up water pump (see equipment settings).
- Attach hoses and supply lines to appropriate equipment.
- Attach spray nozzle to fiber feed line and water supply line.
 - ▶ In cold weather, protect liquid supply lines from freezing.
- Plug scrubber into power source.
- Attach vacuum suction attachment (VSA) to vacuum line.
- Conduct Flow and Feed Rate checks.



3 SPRAYING

- Stand 36"-40" from wall holding nozzle at a 10° downward angle toward bottom of cavity.
- Engage fiber flow and then start the water supply once fiber is flowing.
- From bottom of cavity, move side-to-side in an upward direction.
- Within 10" from the top of cavity, step closer, 18"-24", and fill top of cavity.
- In a downward motion, fill in any voids or gaps in the cavity just filled and move to next cavity and repeat.



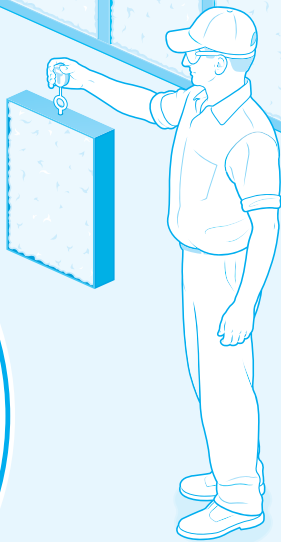
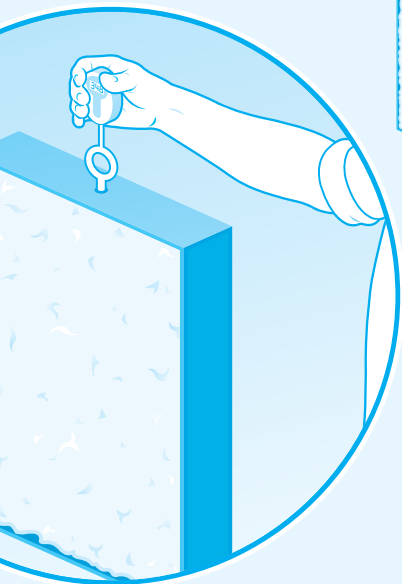


4 SCRUBBING AND VACUUMING

- Scrub the face of stud cavities, removing excess material.
 - ▶ Make sure to repair any voids or gaps created during scrubbing.
- Vacuum excess material regularly into the collector box at the blowing machine.
- Introduce re-feed into the hopper while maintaining an adequate supply of virgin material in the hopper.

5 FIELD TESTING— DENSITY AND MOISTURE

- Randomly conduct density checks to ensure proper coverage and density.
 - ▶ First check should occur after filling four to five cavities, and then random afterwards.
 - ▶ Follow instructions that came with the Densi-Checker.™
 - ▶ Make adjustments accordingly.
- Conduct three to four moisture checks (beginning, middle and end) with the moisture meter to ensure you are installing between 18–22%.
- It is recommended that a moisture check be made prior to drywall or vapor retarder installation, ensuring a moisture reading <15%.



6 SITE AND EQUIPMENT CLEANUP

- Sweep and remove any excess material from site.
- Remove window, HVAC duct/return and electrical box coverings.

Installation Machine Settings: Adapt based on initial equipment settings.

Air Pressure: _____

Water Pressure: _____

Notes: _____

**JetSpray™
Thermal**

**Knauf Insulation, Inc.
One Knauf Drive
Shelbyville, IN 46176**

Sales and Marketing (800) 825-4434, ext. 8485
Technical Support..... (800) 825-4434, ext. 8727
Fax (317) 398-3675
Information..... info.us@knaufinsulation.com
www.knaufinsulation.us

This product is covered by one or more U.S. and/or other patents.
See www.knaufinsulation.us/patents

© 2016 Knauf Insulation, Inc. BI-BWJS-IG 08-16

THE ULTIMATE WALL SYSTEM

To build the ultimate wall, combine JetSpray with ECOSEAL Plus™ Air Sealant to form a total air barrier within the building envelope.

The ultimate wall provides better comfort, energy efficiency and sustainability.

Become an authorized installer for both by visiting ecosealplus.knaufinsulation.us



KNAUFINSULATION
it's time to save energy