



DUPONT™ TYVEK® DRAINVENT™ RAINSCREEN

INSTALLATION GUIDELINES

FOR BUILDINGS LESS THAN 5 STORIES AND LOW-RISE MULTI-FAMILY RESIDENTIAL
BUILDINGS LESS THAN 6 STORIES

REVISED 3/19

Table of Contents

| | |
|--|---|
| Product Description | 2 |
| Building Code Compliance and Standards..... | 2 |
| Specifications | 2 |
| Precautions and Safety..... | 2 |
| Required Materials Based on Project Requirements, Details, and Specifications..... | 2 |
| Preparation | 2 |
| DuPont™ Tyvek® DrainVent™ Rainscreen Installation Instructions | 3 |
| Stucco or Stone Veneer..... | 6 |
| Wood or Fiber Cement Cladding | 6 |
| Wood or Fiber Cement Cladding Over Continuous Exterior Insulation | 6 |
| Water Tables and Other Facade Transitions | 7 |
| Option 1: DuPont™ Tyvek® DrainVent™ Rainscreen Installed Behind Lower Facade Only | 7 |
| Option 2: DuPont™ Tyvek® DrainVent™ Rainscreen Installed Behind Siding/Cladding and Lower Facade | 7 |

Product Description

DuPont™ Tyvek® DrainVent™ Rainscreen provides water drainage and air ventilation to the wall system when installed behind exterior claddings such as stucco, stone veneer, brick, wood and fiber cement lap siding, or metal panel systems.

DuPont™ Tyvek® DrainVent™ Rainscreen is composed of a drainage mesh laminated to a filter-fabric backing. Each roll contains a 3" flap of the filter fabric to provide an overlap of the lower courses of DuPont™ Tyvek® DrainVent™ Rainscreen. The flap can also be folded behind drainage mesh along the bottom of the wall to provide an insect screen.

Building Code Compliance and Standards

Intertek Code Compliance Research Report CCRR-0295 – “E.I. Dupont de Nemours and Company – Tyvek® DrainVent™ Rainscreen”

ICC-ES AC356 – Acceptance Criteria for Moisture Drainage Systems Used with Exterior Cement Plaster or Adhered Masonry Veneer Walls.

ASTM C1780-17 – Standard Practice for Installation Methods for Adhered Manufactured Stone Masonry Veneer.

*Apply per manufacturers’ guidelines. For non DuPont products, DuPont assumes no liability in use of recommended products; installers need to evaluate suitability of recommended products in their end-use applications.

Specifications

| | |
|-------------------|---------------------------------|
| Roll Length | 50’ |
| Roll Height | 4’ (plus 3” filter fabric flap) |
| Roll Diameter | Approx. 13” |
| Roll Weight | Approx. 18 lbs. |
| UV Exposure Limit | 3 months (90 days) |

Precautions and Safety

WARNING: DuPont™ Tyvek® DrainVent™ Rainscreen is slippery and should not be used in any application where it will be walked on. In addition, because DuPont™ Tyvek® DrainVent™ Rainscreen is slippery, DuPont recommends using kick jacks, scaffolding, or lifts for exterior work above the first floor. If ladders must be used, extra caution must be taken to use them safely by following the requirements set forth in ANSI Standards 14.1, 14.2, and 14.5 for ladders made of wood, aluminum, and fiberglass, respectively. DuPont™ Tyvek® DrainVent™ Rainscreen is a combustible building material as categorized by the 2015 International Building Code (Section 703.5) and should be protected from flame and other high-temperature heat sources.

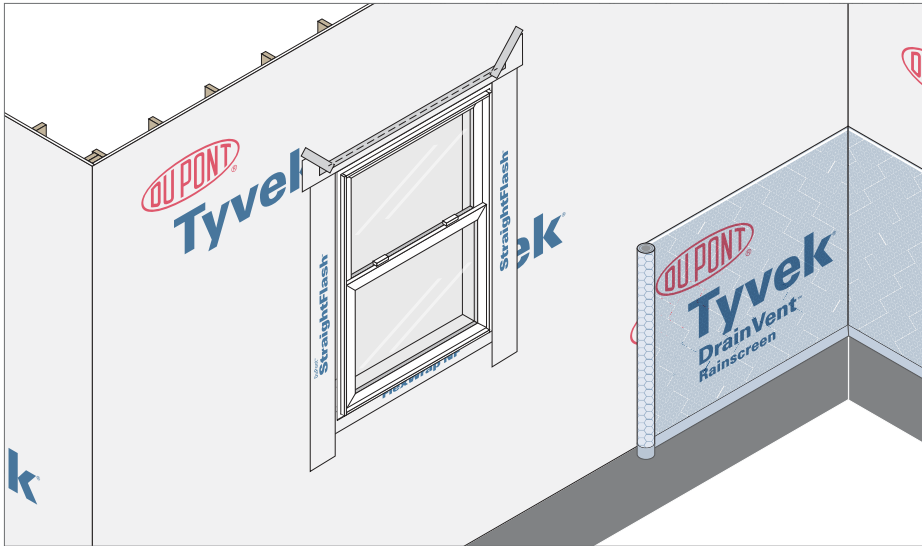
Required Materials Based on Project Requirements, Details, and Specifications

- Fasteners: minimum ½" long corrosion-resistant nails or staples
- Utility knife or shears/scissors
- DuPont™ Tyvek® Tape
- Chalk line (optional)
- Insect screen*

Preparation

Install DuPont™ Tyvek® Water-Resistive Barrier (WRB) or other WRB per the applicable installation guidelines. All windows, doors, and water management components such as window and door flashing, kickout flashing, through wall flashing, and weep screeds for stucco should be installed and properly integrated with the WRB prior to the installation of DuPont™ Tyvek® DrainVent™ Rainscreen. Wall penetrations should also be properly flashed and/or sealed.

DuPont™ Tyvek® DrainVent™ Rainscreen Installation Instructions

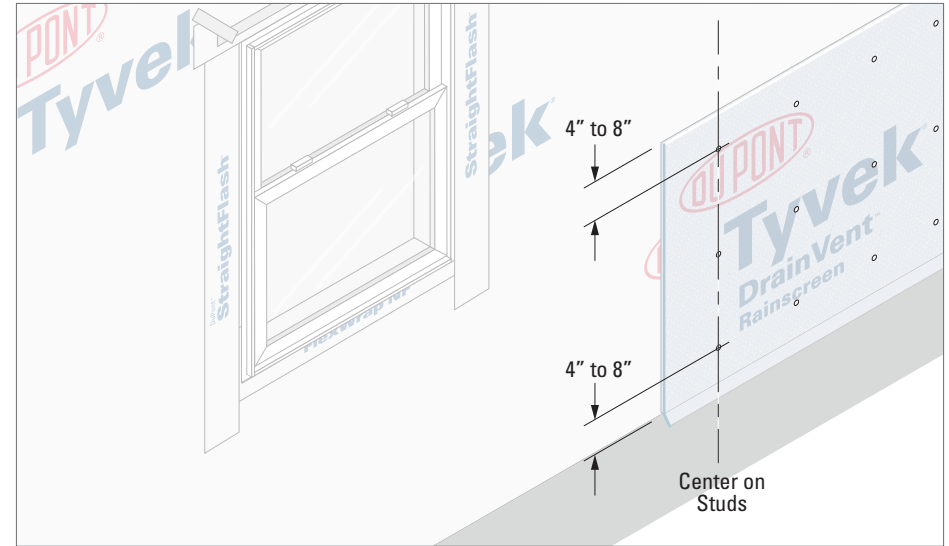


STEP 1

Starting at the bottom of the wall to ensure proper shingling throughout the installation, align bottom horizontal edge of drainage mesh with bottom edge of WRB or just below framing/foundation interface. Install with the filter fabric layer facing outward and the drainage mesh facing the WRB. The 3" flap should extend beyond the bottom of the WRB.

Roll out the first course of DuPont™ Tyvek® DrainVent™ Rainscreen. A chalk line can be snapped across the wall four feet above the bottom edge of the WRB or framing/foundation interface to ensure the product remains level as it is installed. The DuPont™ Tyvek® DrainVent™ Rainscreen can be unrolled around outside corners and tightly into inside corners.

NOTE: DuPont™ Tyvek® DrainVent™ Rainscreen is made with a 3" filter fabric flap that can be used to create an insect screen at the bottom of the wall (see Step 3). The flap also allows horizontal seams to be installed in a shingled fashion as additional courses are installed above.

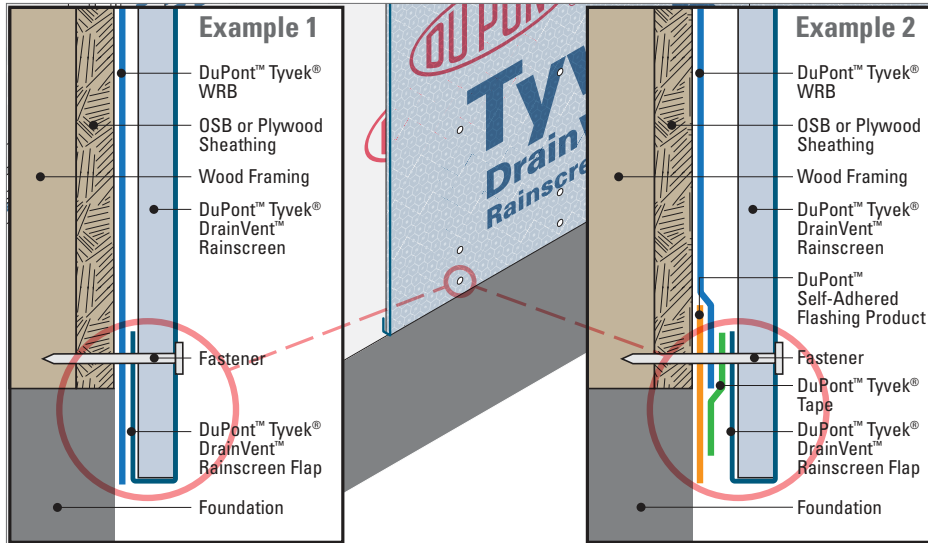


STEP 2

Secure the DuPont™ Tyvek® DrainVent™ Rainscreen to the studs or other nail-base material (e.g., wood sheathing), using minimum ½" long corrosion-resistant nails or staples. Horizontal spacing should be along stud lines: every other stud for 16-inch-on-center stud spacing, or every stud for 24-inch-on-center stud spacing. Start along the top of the roll by installing fasteners 4-8" below the top edge of the roll. Next, install fasteners 4-8" above the bottom edge of the roll and then at the center of the roll.

NOTE: Avoid installation of fasteners into flashing or weep screeds. Once completely installed, the cladding fasteners such as brick ties, siding fasteners, exterior foam board fasteners, or lath fasteners for stone veneer or stucco will permanently secure the DuPont™ Tyvek® DrainVent™ Rainscreen.

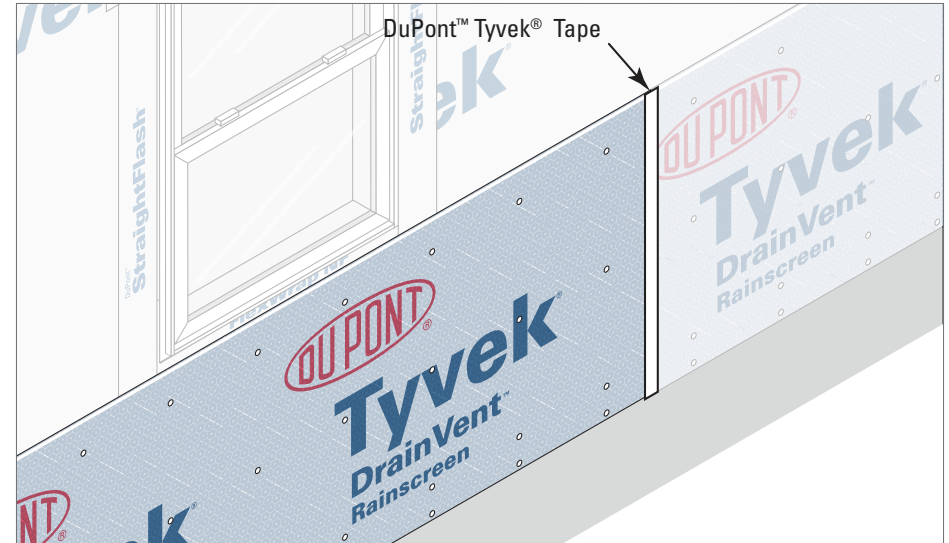
DuPont™ Tyvek® DrainVent™ Rainscreen



STEP 3

Fold 3" filter fabric flap behind the drainage mesh along the bottom edge of the roll to serve as an insect screen. The flap should be behind the drainage mesh, but over the WRB or water management component at the bottom of the wall. Using nails or staples, secure DuPont™ Tyvek® DrainVent™ Rainscreen and folded flap along the bottom of wall at stud line.

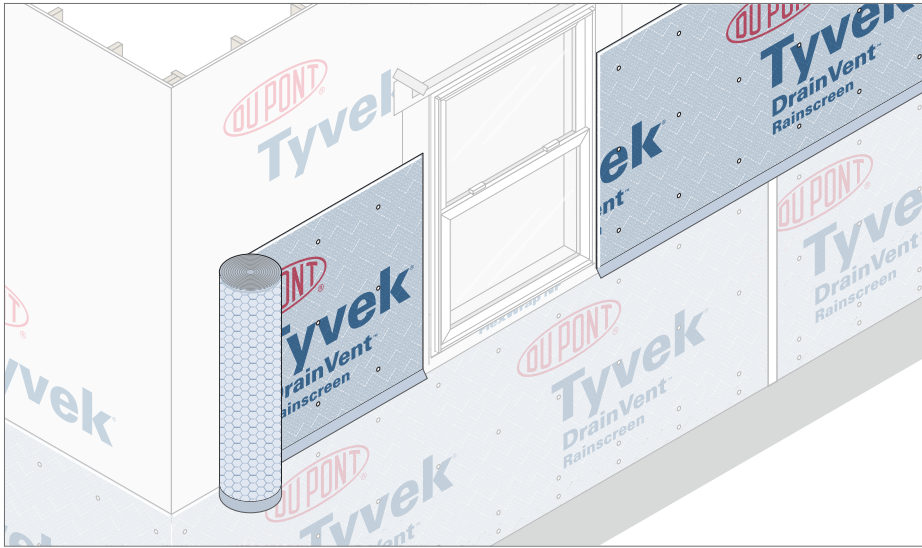
NOTE: The bottom of wall detail may vary from examples shown depending on plans and specifications. If insect screen is not needed or desired, for example when integrated with the weep screed, cut filter flap at bottom of wall to remove. Do not cut the drainage mesh.



STEP 4

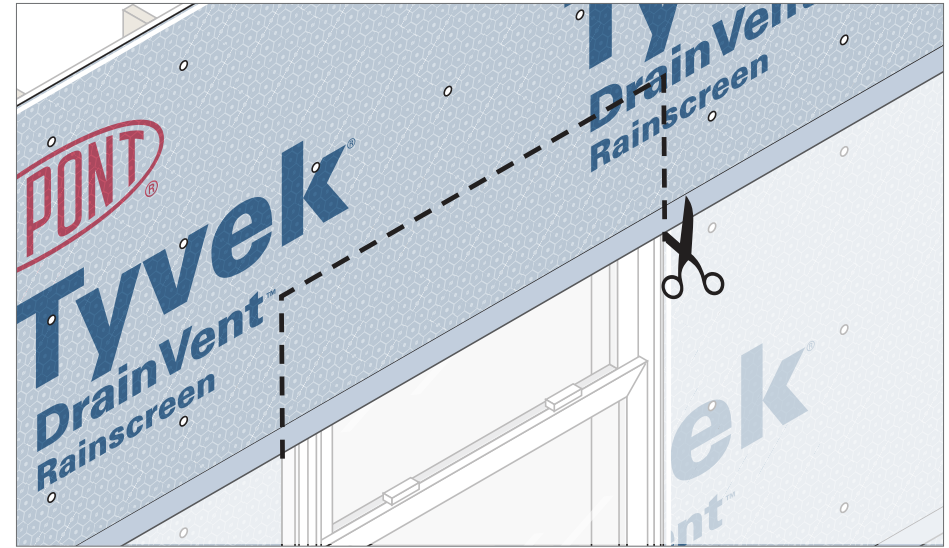
Start the next roll of DuPont™ Tyvek® DrainVent™ Rainscreen by butting the vertical edge of its drainage mesh against the vertical edge of the drainage mesh from previous roll and install in same manner. Avoid overlapping the drainage mesh to maintain a flat plane across the wall.

NOTE: For stucco or stone apply a piece of DuPont™ Tyvek® Tape along the vertical butt joint to ensure that stucco or mortar does not penetrate the joint.



STEP 5

Once installed along bottom of wall, install additional courses of DuPont™ Tyvek® DrainVent™ Rainscreen as necessary by aligning horizontal edges of drainage mesh to butt against the top horizontal edge of the lower course with the filter fabric flap overlapping the bottom course. It is not necessary to secure the filter flap; however, the flap must remain in place with proper shingling after cladding installation.



STEP 6

Using a utility knife or shears/scissors, trim the DuPont™ Tyvek® DrainVent™ Rainscreen flush with each window and door frame, all wall penetrations, and at the top of the wall. **Do not cut through the flashing or WRB underneath. Avoid installation of fasteners into flashing or weep screeds.**

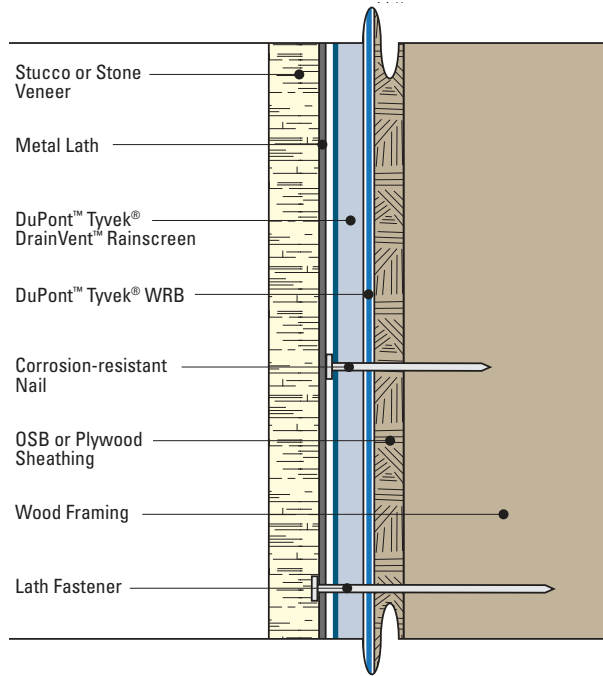
OPTIONAL: To help prevent insects or wind-driven debris from entering the drainage mesh, integrate an insect screen at edges of drainage mesh following manufacturer's instructions.

DuPont™ Tyvek® DrainVent™ Rainscreen

STEP 7

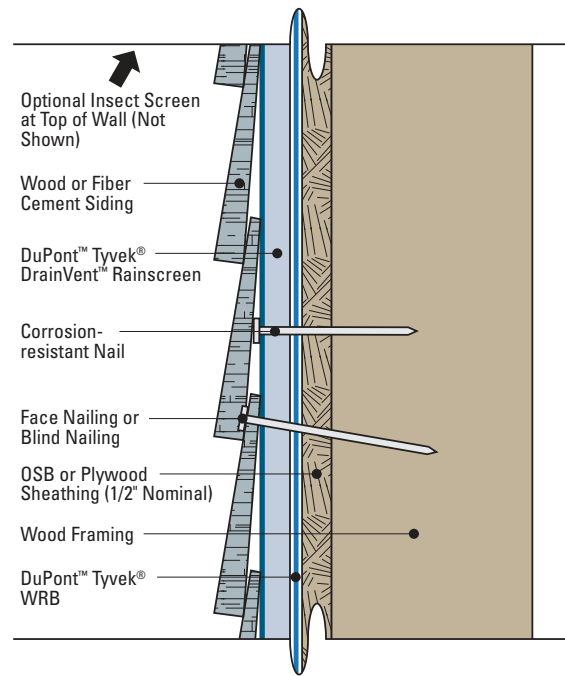
Install cladding system over DuPont™ Tyvek® DrainVent™ Rainscreen. When installing cladding, leave minimum 1/4" gap at top of wall or install weeps per manufacturer's instructions in order to allow for airflow behind cladding. See additional cladding considerations below.

Stucco or Stone Veneer



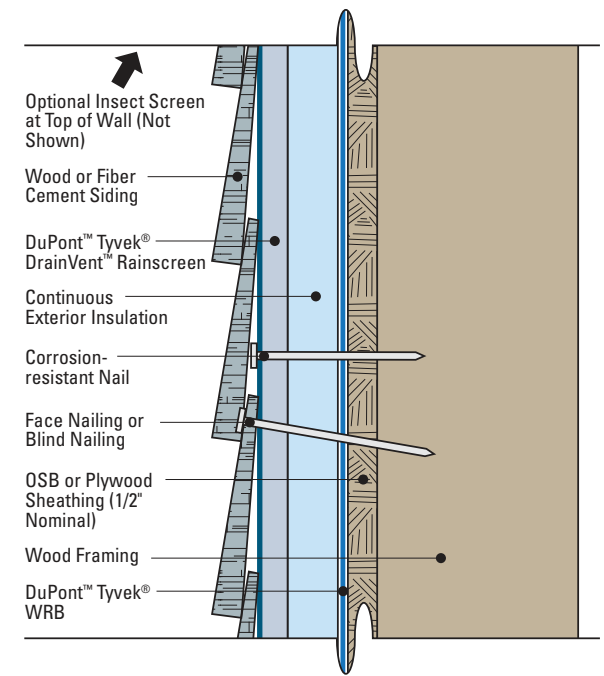
Prior to installation of stucco system or stone veneer, attach metal lath over DuPont™ Tyvek® DrainVent™ Rainscreen in accordance with manufacturer's recommendations and the requirements of ASTM C1063. Install casing beads and other accessories for stucco/stone veneer at top of wall, cladding transitions, around windows/doors, etc. per specifications and manufacturer's instructions. Install stucco system or stone veneer according to the manufacturer's recommendations.

Wood or Fiber Cement Cladding



Install wood siding or fiber cement cladding over DuPont™ Tyvek® DrainVent™ Rainscreen in accordance with the cladding manufacturer's recommendations.

Wood or Fiber Cement Cladding Over Continuous Exterior Insulation



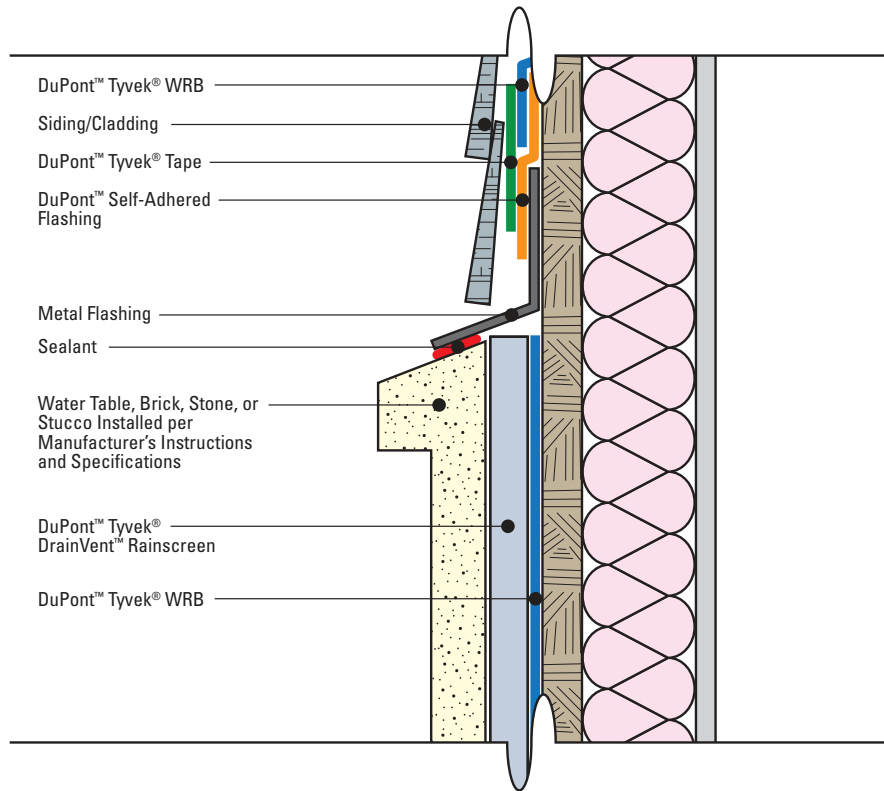
Install continuous exterior insulation according to manufacturer's recommendations. Install DuPont™ Tyvek® DrainVent™ Rainscreen over continuous exterior insulation, then install wood siding or cement cladding over DuPont™ Tyvek® DrainVent™ Rainscreen according to the cladding manufacturer's recommendations.

*DuPont™ Tyvek® WRBs can be installed UNDER or OVER continuous exterior insulation, but should be installed on the same plane as the window flanges. When a DuPont™ Tyvek® WRB is installed UNDER continuous exterior insulation, it's recommended that DuPont™ Tyvek® DrainWrap™, StuccoWrap®, or CommercialWrap® D be used for enhanced drainage.

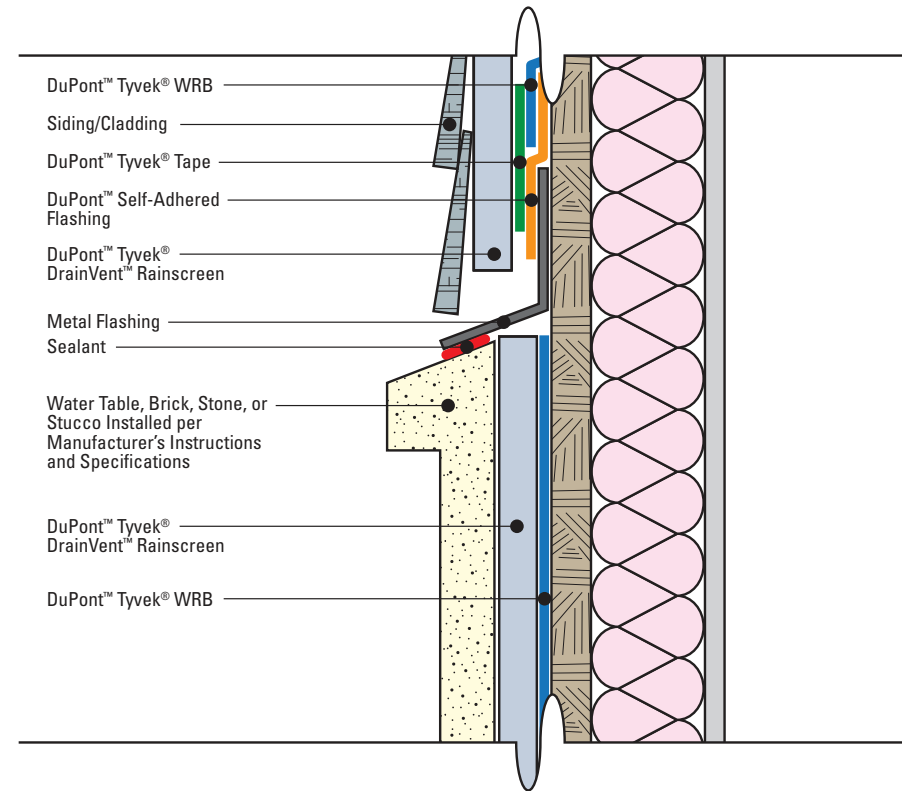
Water Tables and Other Facade Transitions

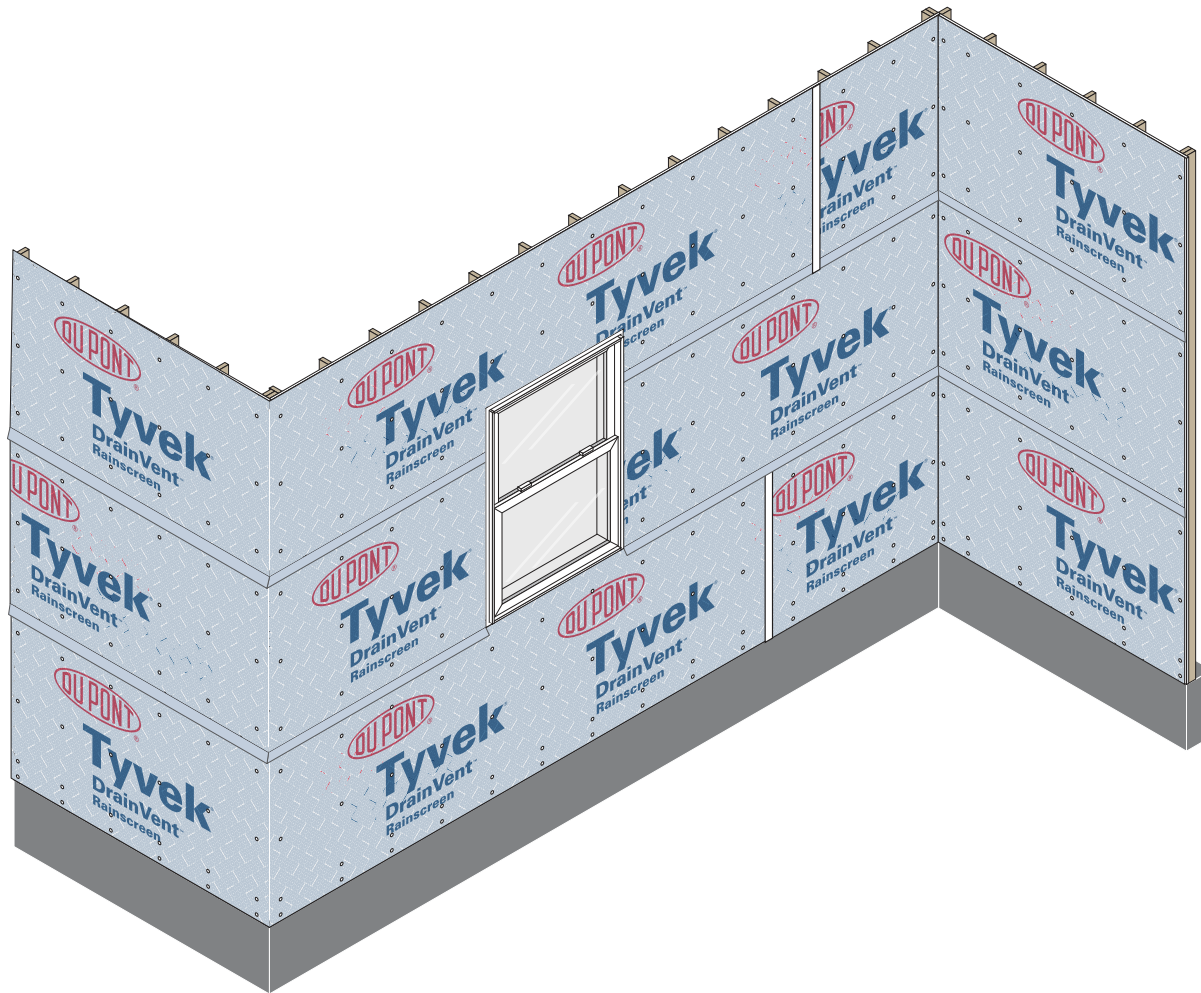
DuPont™ Tyvek® DrainVent™ Rainscreen can provide enhanced drainage when used behind water tables, stucco, stone, or brick.

Option 1: DuPont™ Tyvek® DrainVent™ Rainscreen Installed Behind Lower Facade Only



Option 2: DuPont™ Tyvek® DrainVent™ Rainscreen Installed Behind Siding/Cladding and Lower Facade





For more information about
DuPont™ Tyvek® DrainVent™ Rainscreen,
please call 1-800-44-Tyvek or visit us at
DrainVent.Tyvek.com



Tyvek®

This information is not intended to be used by others for advertising, promotion, or other publication for commercial purposes. This information is based on technical data DuPont believes to be reliable and is subject to revision. It is intended for informational use by persons having technical skill for evaluation and at their own discretion and risk. Since conditions of use are outside our control, **DuPont makes no warranties, express or implied, including, without limitation, no warranties of merchantability or fitness for a particular use and assume no liability in connection with any use of this information.** This information is not intended as license to use or infringe any trademark, patent or technical information.

The DuPont Oval Logo, DuPont™, DrainVent™, DrainWrap®, HomeWrap® and Tyvek® are trademarks or registered trademarks of DuPont Specialty Products USA, LLC or its affiliates. © 2019. DuPont. All rights reserved. K-29861 3/19