

PermaBase[®] UltraBacker[™]

1/4" Cement Board Underlayment



Perma
BASE[®]
BRAND
**ULTRA
BACKER**[™]
Cement Board

National 
Gypsum[®]

PermaBase[®] BRAND UltraBacker[™] 1/4" Cement Board Underlayment

Description

1/4" PermaBase[®] BRAND UltraBacker[™] Cement Board is used as an underlayment for ceramic tile on floors, countertops, tub decks and outdoor kitchen counters.

PermaBase UltraBacker is a rigid substrate made of Portland Cement, aggregate and a glass mesh and mat facer that provides an exceptionally hard, smooth and durable surface that is able to withstand prolonged exposure to moisture.

1/4" PermaBase UltraBacker offers a competitive advantage over similar products on the market with its patented EdgeTech[®] technology. The tapered, reinforced edge design allows for closer nail or screw application to the edge while helping prevent damage in transit and on the jobsite.

For flooring applications with 19.2" o.c. and 24" o.c. floor joists, 3/4" tongue and groove exterior grade plywood or OSB must be used. Tile size for floors with 24" o.c. floor joists must be 12" x 12" or larger.

Features/Benefits

- Smooth mesh and mat surface is 30% stronger and four times more rigid than competitive 1/4" cement boards.
- Improved fastener holding and reinforced edges allow for closer fastening of nails or screws without crumbling or spinout. Is extremely durable in transit and on the jobsite.

- Cuts easily with a standard utility knife versus specialty tools or expensive power tools required to cut traditional cement board and fiber cement board.

- The 1/4" thickness eliminates the need to modify adjacent thresholds when abutting to carpet, wood flooring or other common flooring materials.

- PermaBase UltraBacker has the lowest water absorption rate (<4%) than other backerboards which ensures more open time and a better tile bond.

- Mold and moisture resistant – will not rot, swell or disintegrate when exposed to moisture.

- Compatible with all brands of thinsets and grouts.

- 30-year limited warranty for interior applications

- GREENGUARD Indoor Air Quality Certified[®]

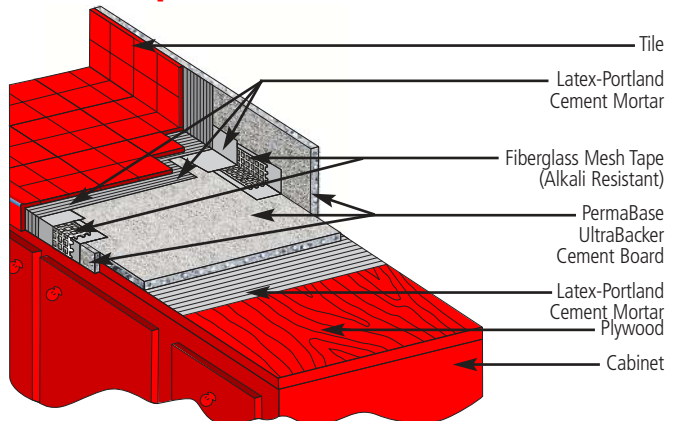
Handling Recommendations

The advanced design of the product using fiberglass mat/mesh technology allows for easy and straight cuts with a standard utility knife. Cutting PermaBase UltraBacker with power tools is not recommended. Due to the fiberglass, dust and glass fibers may be released during normal handling and installation which could result in eye or skin irritation. Whenever possible, avoid contact with the skin and eyes and avoid breathing dust or fibers that may be released during handling/installation. Consult the MSDS for this product, available at permabase.com.

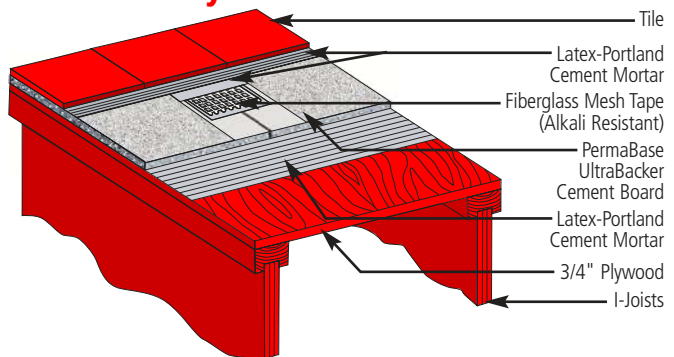
COMPARISON CHART

	1/4" PermaBase UltraBacker	1/4" Fiber Cement
Moisture absorption when tested according to ASTM C 473	<4%	25%
Permitted for use in exterior applications	Yes	No
Easily cut with standard utility knife	Yes	No
Organic cellulose fiber reinforcement	No	Yes
Recommend wiping entire surface of board with damp sponge prior to applying setting compounds.	No	Yes
Flame Spread/Smoke Dev. ASTM E 84	0/0	0/5

Countertop



Floor Underlayment



Tape & Screws

National Gypsum recommends the use of PermaBase Tape and PermaBase Screws to complete your installation.



Corporate Headquarters

National Gypsum Company
2001 Rexford Road
Charlotte, NC 28211
Phone: (704) 365-7300
Web: nationalgypsum.com
nationalgypsum.com/espanol

Technical Information

Phone: (800) NATIONAL
(800) 628-4662
Fax: (800) FAX-NGC1
(800) 329-6421

National 
Gypsum[®]