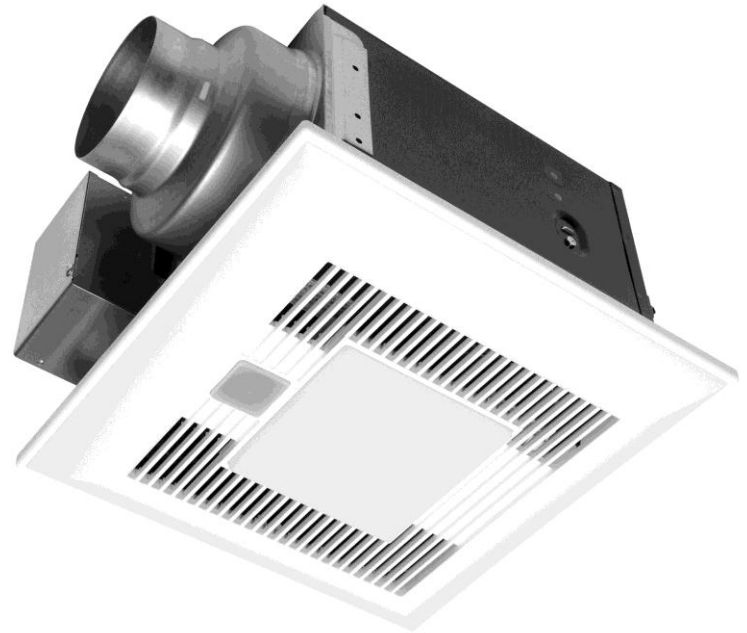


Panasonic Advanced Ventilation Fans

WhisperSense™
VENTILATION FAN

WhisperSense-Lite™
VENTILATION FAN



*CAL*Green

Panasonic®

Exclusive Dual Sensor Technology with both Motion & Humidity Sensor

- **Built-in motion sensor** automatically turns on when you enter the room. No more forgetting to turn the fan on with Panasonic's decision free technology.
- **Built-in humidity sensor** detects rapid rise in relative humidity (RH) and automatically removes moisture to help prevent mold and mildew.
- **Built-in adjustable delay (off) timer** can be set from 30 seconds to 60 minutes and activates when motion is no longer detected or when humidity levels are below preset levels.



FV-08VQC5, FV-11VQC5



Exclusive Dual Sensor Technology with both Motion & Humidity Sensor

- Provides a cost effective way to comply with code requirements for controlled air moisture applications
- WhisperSense completes our “smart” technology fan offering designed to meet or exceed existing and proposed IAQ



FV-08VQC5, FV-11VQC5



Features	Benefits
Extremely Quiet (FV-08VQC5 <0.3 Sones/FV-11VQC5 – 0.7 Sones)	Increased homeowner satisfaction
Energy Efficient (can comply with ENERGY STAR & CALGreen) Totally enclosed motor rated for continuous use	Reduced utility bills/meet building standards Long Life
Built-in Humidity & Motion sensors	Can help prevent mold & mildew
Automatic shut off adjustable delay timer 0.5 – 60 minute delay off timer	SAVES MONEY
4 Models (80 & 110 CFM – Lighted & Fan Only)	Complete Package for design flexibility
New 4” – 6”Dual Duct Adapter	Installation Flexibility
Integral Sensors	Reduced Labor & Material Costs



- **Dual Sensors built into the fan –**
Activates the fan when humidity becomes excessive or when the room is occupied.
- **4 models for design versatility –**
Available in our most popular lighted and non-lighted 80 and 110 cfm Whisper Ceiling platforms
- **Dual Duct adaptor for 4" or 6" duct**
Ideal for new residential and light commercial applications
- **Performance Under Pressure**
Powerful CFM output at .25" w.g., and extremely low sone levels make it suitable where airflows and sound are measured

FV-08VQCL6, FV-11VQCL6



New flush mount grille

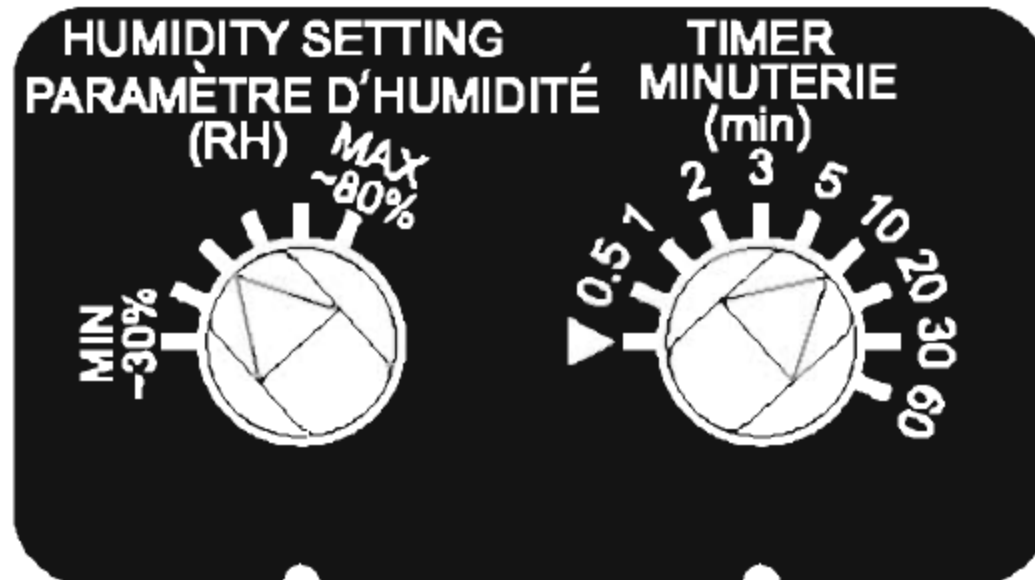


INCLUDES: (2) 13W ENERGY STAR rated self ballasted GU24 Base CFL/lamps and a 4W night light. 3500Kelvin/HighCRI/997 Lumens per lamp/75 Lumens Per Watt/10,000 hours, rated average life/equivalent to (2) 75W incandescent lamps.



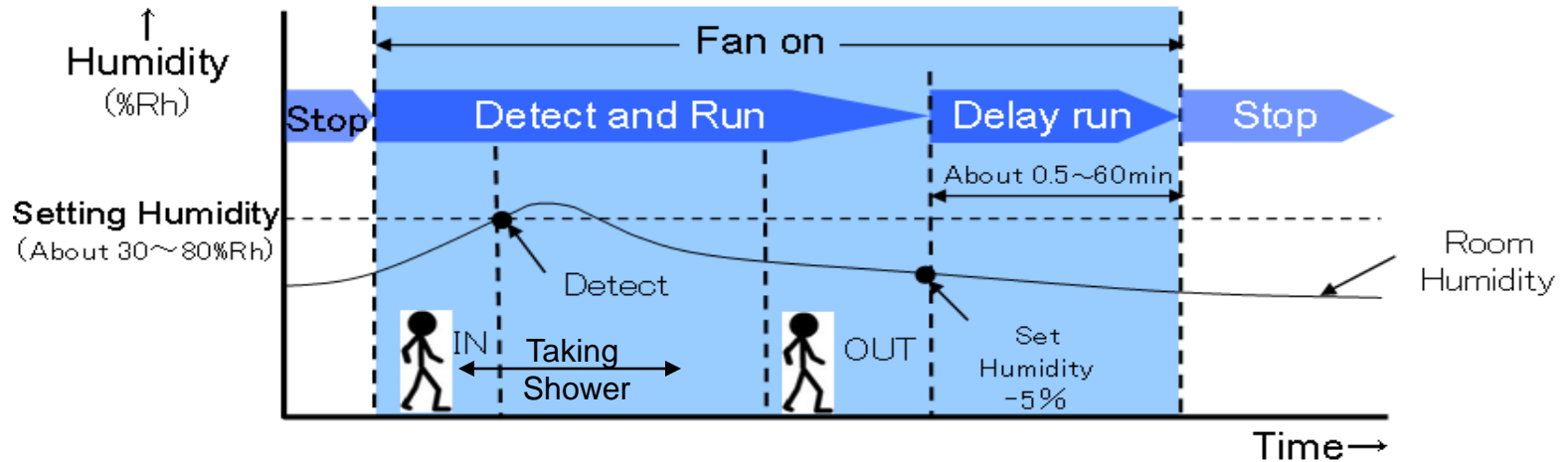
- Totally enclosed AC condenser motor assures quiet operation
- Permanently lubricated motors
- Rust-proof paint treatment on galvanized steel body
- Easy installation
 - With detachable 4” or 6” dual duct adapter
 - Fan/motor units that easily detach from the housing
- Built-in damper to prevent backdrafts
- UL listed for tub/shower enclosure when used with GFCI branch circuit wire
- Thermal fuse protection
- Can be used to comply with ASHRAE 62.2, ENERGY STAR, CalGreen, LEED & Title 24
- Manufactured in ISO 9001 Certified Facility
- 3 year warranty





- Factory Setting : Humid Sensor 50% Delay Off Timer 10minutes

Typical Moisture Situation



(Most Typical RH Case)

- The fan is activated when the level of humidity exceeds the set point.
- When the humidity level drops below the set point by 5% the timer engages and turns the fan off in the prescribed time (30 sec-60 mins.)

There is no equal to WhisperSense

- No one incorporates dual sensor technology for moisture mitigation
- Gives you an opportunity to position Panasonic as the most innovative ventilation fan manufacturer in the world.



New Construction & Renovation

- Can save money on installation as wall switch is not required
- Effortless as the fan does the thinking for you, ideal for kids bathrooms, commercial applications such as gas stations or strip malls
- Hands free for applications such as assisted living or handicap accessible restrooms
- **States and municipalities with moisture control codes**



Panasonic Advanced Ventilating Fans

Please bookmark:

www.us.panasonic.com/ventfans

- Technical specifications
- Installation Instruction
- Submittal sheets and architectural specifications
- And much more...

