

ELECTRICAL PANELS



E-SGB:
ELECTRICAL SINGLE GANG BOX FLASHING PANEL
Used on 3-coat stucco and lap siding.
Fits specified electrical single gang plastic boxes only.



E-SGB-A 7/8":
ELECTRICAL SINGLE GANG BOX FLASHING PANEL
Used on 3-coat stucco.
Fits Allied Moulded electrical single gang box only (Part # 9327-N).



E-SGB-A 1 3/8":
ELECTRICAL SINGLE GANG BOX FLASHING PANEL
Used on 1-coat stucco, EIFS & rainscreen systems.
Fits Allied Moulded electrical single gang box only (Part # 9327-N).



E-SGB-C 5/8":
ELECTRICAL SINGLE GANG BOX FLASHING PANEL
Used on 3-coat stucco and lap siding.
Fits Carlon electrical single gang box (Part # B121ADJ only).



E-SGB-C 7/8":
ELECTRICAL SINGLE GANG BOX FLASHING PANEL
Used on 3-coat stucco.
Fits Carlon electrical single gang box (Part # B121ADJ only).



E-SGB-C 1 3/8":
ELECTRICAL SINGLE GANG BOX FLASHING PANEL
Used on 1-coat stucco, EIFS, & rainscreen systems.
Fits Carlon electrical single gang box (Part # B121ADJ only).



E-SGR
ELECTRICAL SINGLE GANG 1/2" RAISED PLASTER RING COVER FLASHING PANEL
Used on 3-coat stucco and lap siding.
Fits specified electrical single gang raised plastic ring cover only.

ELECTRICAL PANELS



E-3/0 B:
ELECTRICAL 3/0 BOX FLASHING PANEL
Used on 3-coat stucco and lap siding.
Fits specified electrical 3/0 plastic boxes only.



E-3/0 B-A 7/8":
ELECTRICAL 3/0 BOX FLASHING PANEL
Used on 3-coat stucco.
Fits Allied Moulded electrical 3/0 boxes (Part #'s 9335-HNK, 9335-HNGK only).



E-3/0 B-A 1 3/8":
ELECTRICAL 3/0 BOX FLASHING PANEL
Used on 1-coat stucco, EIFS, & rainscreen systems.
Fits Allied Moulded electrical 3/0 boxes (Part #'s 9335-HNK, 9335-HNGK only).



E-4/0 B:
ELECTRICAL 4/0 BOX FLASHING PANEL
Used on 3-coat stucco and lap siding.
Fits specified electrical 4/0 plastic boxes only.



E-4/0 SB:
ELECTRICAL 4/0 STEEL BOX FLASHING PANEL
Used on 1-coat stucco, EIFS, & rainscreen systems.
Fits specified electrical 4" metal "octagon" boxes only.



E-PC 3/0:
ELECTRICAL PANCAKE 3/0 BOX FLASHING PANEL
Used on 3-coat stucco and lap siding.
Fits specified electrical pancake 3/0 metal boxes only.



E-PC 4/0:
ELECTRICAL PANCAKE 4/0 BOX FLASHING PANEL
Used on 3-coat stucco and lap siding.
Fits specified electrical pancake 4/0 metal boxes only.

PLUMBING & GAS PANELS



P-2PS:
PLUMBING FLASHING PANEL
Two piece system. Used on copper pipes with exterior T's sweated on.
Cut out center to fit around 1/2" to 2" sized copper pipes. (IMPORTANT: Caulking is required to make seal at pipe to panel)



P-50:
PLUMBING FLASHING PANEL
Fits 1/2" to 3/4" sized pipes - copper, rigid, PVC, or ABS.
(Can also be used for electrical conduit)



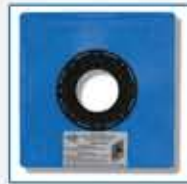
P-100:
PLUMBING FLASHING PANEL
Fits 1" to 1 1/4" sized pipes - copper, rigid, PVC, or ABS.
(Can also be used for electrical conduit)



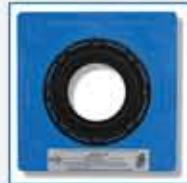
P-150:
PLUMBING FLASHING PANEL
Fits 1 1/2" to 1 3/4" sized pipes - copper, rigid, PVC, or ABS.
(Can also be used for electrical conduit)



P-200:
PLUMBING FLASHING PANEL
Fits 2" to 2 1/2" sized pipes - copper, rigid, PVC, or ABS.
(Can also be used for electrical conduit)
Also fits 3" single wall sheet metal duct.



P-300:
PLUMBING & HVAC FLASHING PANEL
Fits 3" sized pipes - copper, rigid, PVC, or ABS
Also fits 4" single wall sheet metal duct.



P-400:
PLUMBING & HVAC FLASHING PANEL
Fits 4" sized pipes - copper, rigid, PVC, or ABS.
Also fits 5" single wall sheet metal duct.

HVAC PANELS

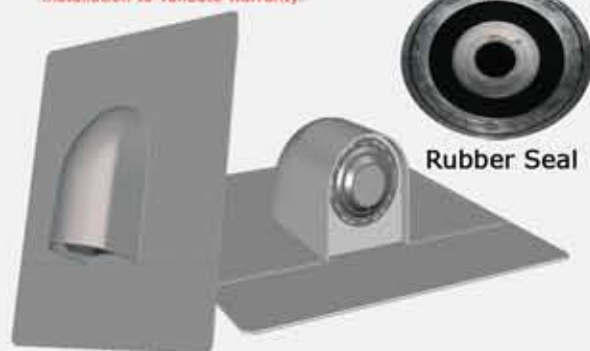


P-600:
PLUMBING & HVAC FLASHING PANEL
Fits 6" sized pipes - copper, rigid, PVC, or ABS.
Also fits 6" & 7" single wall sheet metal duct.

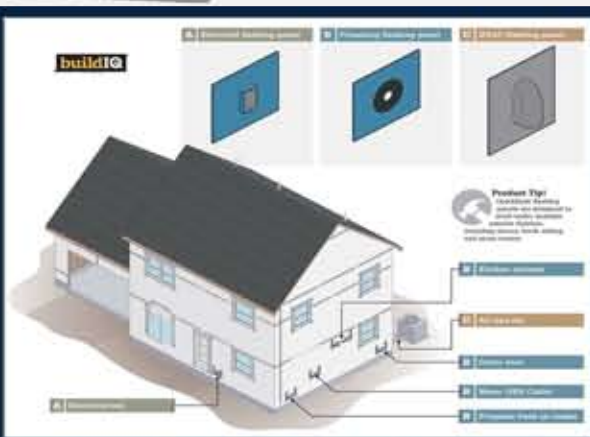


A/C LINE SET FLASHING PANEL
Paintable to match exterior cladding.
Used on 1-coat stucco, 3-coat stucco, and siding exteriors.
A/C 150 fits Line Sets with 1 1/2" - 2" insulation tubing.
A/C 250 fits Line Sets with 2 1/4" - 2 3/4" insulation tubing.

Hub must be primed and painted after installation to validate warranty.



Rubber Seal



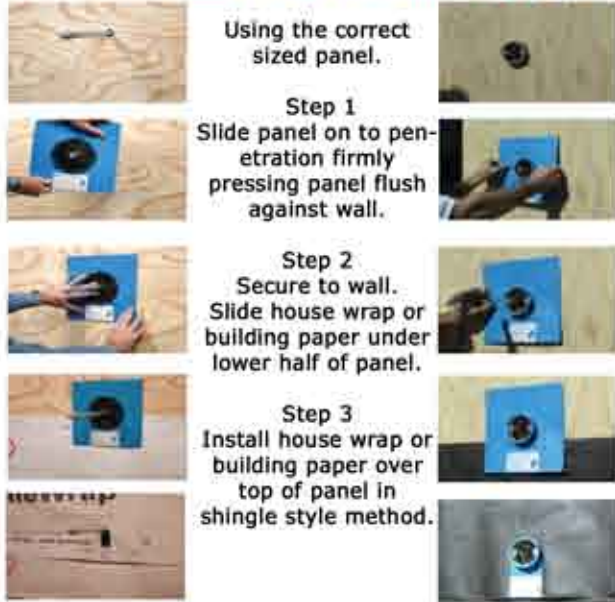
www.QuickflashProducts.com

Warning: All Quickflash® products maximum heat threshold is 160°F. Quickflash® products are combustible and should be protected from flame and other high heat.

Quickflash® Install

Plumbing **Methods** *Electrical*

Before house wrap or building paper



Using the correct sized panel.

Step 1

Slide panel on to penetration firmly pressing panel flush against wall.

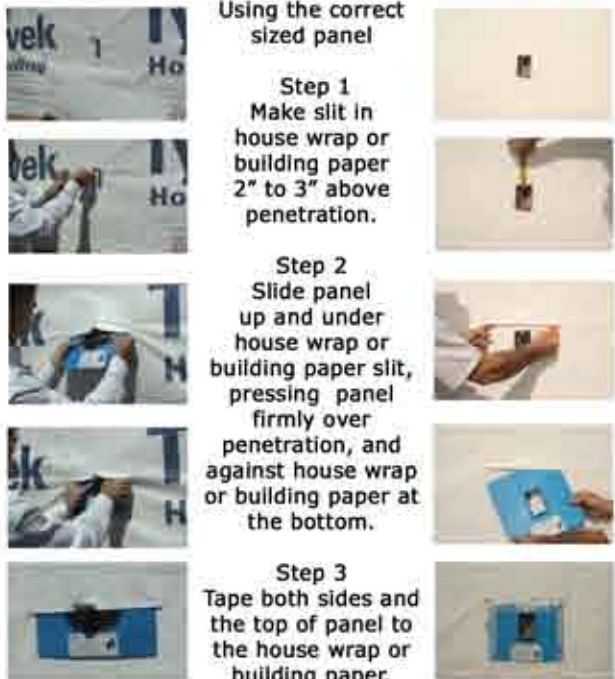
Step 2

Secure to wall. Slide house wrap or building paper under lower half of panel.

Step 3

Install house wrap or building paper over top of panel in shingle style method.

After house wrap or building paper



Using the correct sized panel

Step 1
Make slit in house wrap or building paper 2" to 3" above penetration.

Step 2

Slide panel up and under house wrap or building paper slit, pressing panel firmly over penetration, and against house wrap or building paper at the bottom.

Step 3

Tape both sides and the top of panel to the house wrap or building paper.

Always refer to house wrap or building paper manufacturer's install guidelines.

Top 10 Benefits

- Reduces liability
- Stops air leakage
- Helps prevent water intrusion
- Economical - saves time and labor
- Eliminates the need for sealants
- Non-corrosive, Non-conductive
- Only flashing specifically designed for wall penetrations
- Self sealing around fasteners
- Easy to integrate with building envelope and works with all cladding systems
- 10 Year limited warranty

Use with Zip System™



Quickflash Weatherproofing Products, Inc.
4129 Wagon Trail Avenue
Las Vegas, Nevada 89118
(702) 614-6100
(800) 963-6886
(702) 614-4090 Fax

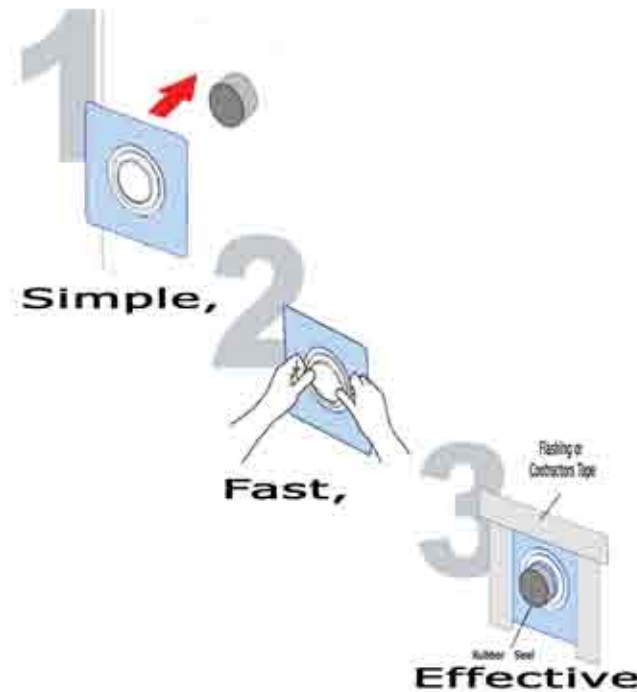


Made in the USA

Please visit us at:
www.quickflashproducts.com



FLASHING PANELS FOR WALL PENETRATIONS



Quickflash® works with all types of claddings



- Wood Siding
- Fiber Cement Siding
- Vinyl Siding
- Brick/Cultured Stone
- Metal/Aluminum Siding
- Stucco Systems
- Rainscreen Systems