

## ELECTRICAL PANELS



**E-SGB:**  
ELECTRICAL SINGLE GANG  
BOX FLASHING PANEL  
Used on 3-coat stucco and lap siding.  
Fits specified electrical single gang  
plastic boxes only.



**E-SGB-A 7/8\":**  
ELECTRICAL SINGLE GANG  
BOX FLASHING PANEL  
Used on 3-coat stucco.  
Fits Allied Moulded electrical single  
gang box only (Part # 9327-N).



**E-SGB-A 1 3/8\":**  
ELECTRICAL SINGLE GANG  
BOX FLASHING PANEL  
Used on 1-coat stucco,  
EIFS & rainscreen systems.  
Fits Allied Moulded electrical single  
gang box only (Part # 9327-N).



**E-SGB-C 5/8\":**  
ELECTRICAL SINGLE GANG  
BOX FLASHING PANEL  
Used on 3-coat stucco and lap siding.  
Fits Carlon electrical single gang  
box (Part # B121ADJ only).



**E-SGB-C 7/8\":**  
ELECTRICAL SINGLE GANG  
BOX FLASHING PANEL  
Used on 3-coat stucco.  
Fits Carlon electrical single gang  
box (Part # B121ADJ only).



**E-SGB-C 1 3/8\":**  
ELECTRICAL SINGLE GANG  
BOX FLASHING PANEL  
Used on 1-coat stucco,  
EIFS, & rainscreen systems.  
Fits Carlon electrical single gang  
box (Part # B121ADJ only).



**E-SGR**  
ELECTRICAL SINGLE GANG 1/2"  
RAISED PLASTER RING COVER  
FLASHING PANEL  
Used on 3-coat stucco and lap siding.  
Fits specified electrical single gang  
raised plastic ring cover only.

## ELECTRICAL PANELS



**E-3/0 B:**  
ELECTRICAL 3/0 BOX  
FLASHING PANEL  
Used on 3-coat stucco and lap siding.  
Fits specified electrical 3/0 plastic  
boxes only.



**E-3/0 B-A 7/8\":**  
ELECTRICAL 3/0 BOX  
FLASHING PANEL  
Used on 3-coat stucco.  
Fits Allied Moulded electrical 3/0 boxes  
(Part #'s 9335-HNK, 9335-HNGK only).



**E-3/0 B-A 1 3/8\":**  
ELECTRICAL 3/0 BOX  
FLASHING PANEL  
Used on 1-coat stucco,  
EIFS, & rainscreen systems.  
Fits Allied Moulded electrical 3/0 boxes  
(Part #'s 9335-HNK, 9335-HNGK only).



**E-4/0 B:**  
ELECTRICAL 4/0 BOX  
FLASHING PANEL  
Used on 3-coat stucco and lap siding.  
Fits specified electrical 4/0 plastic  
boxes only.



**E-4/0 SB:**  
ELECTRICAL 4/0 STEEL  
BOX FLASHING PANEL  
Used on 1-coat stucco,  
EIFS, & rainscreen systems.  
Fits specified electrical 4" metal  
"octagon" boxes only.



**E-PC 3/0:**  
ELECTRICAL PANCAKE  
3/0 BOX FLASHING PANEL  
Used on 3-coat stucco and lap siding.  
Fits specified electrical pancake 3/0  
metal boxes only.



**E-PC 4/0:**  
ELECTRICAL PANCAKE  
4/0 BOX FLASHING PANEL  
Used on 3-coat stucco and lap siding.  
Fits specified electrical pancake 4/0  
metal boxes only.

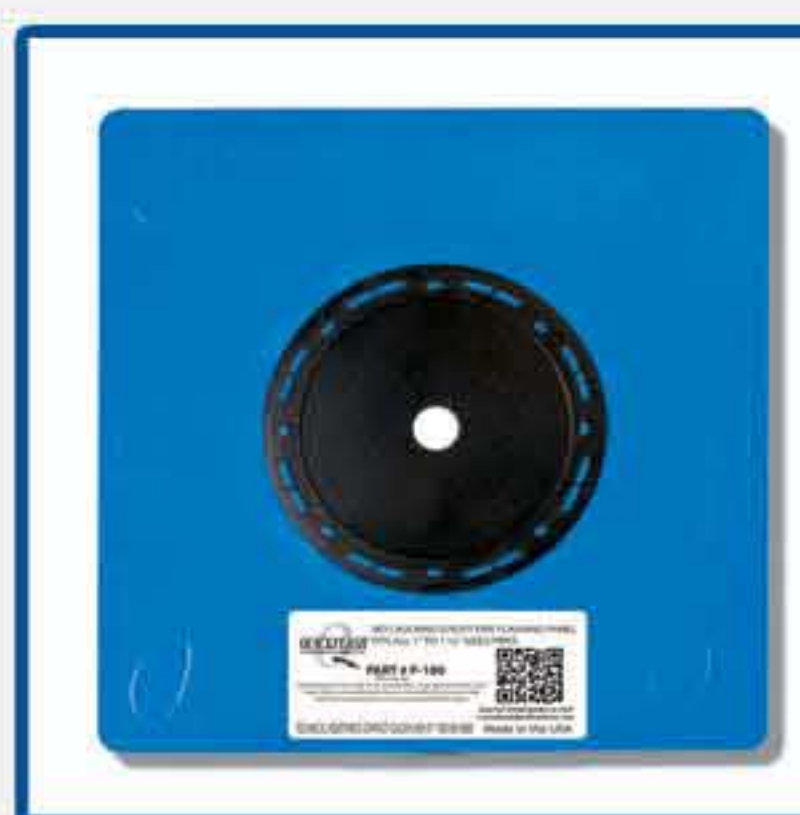
## PLUMBING & HVAC PANELS



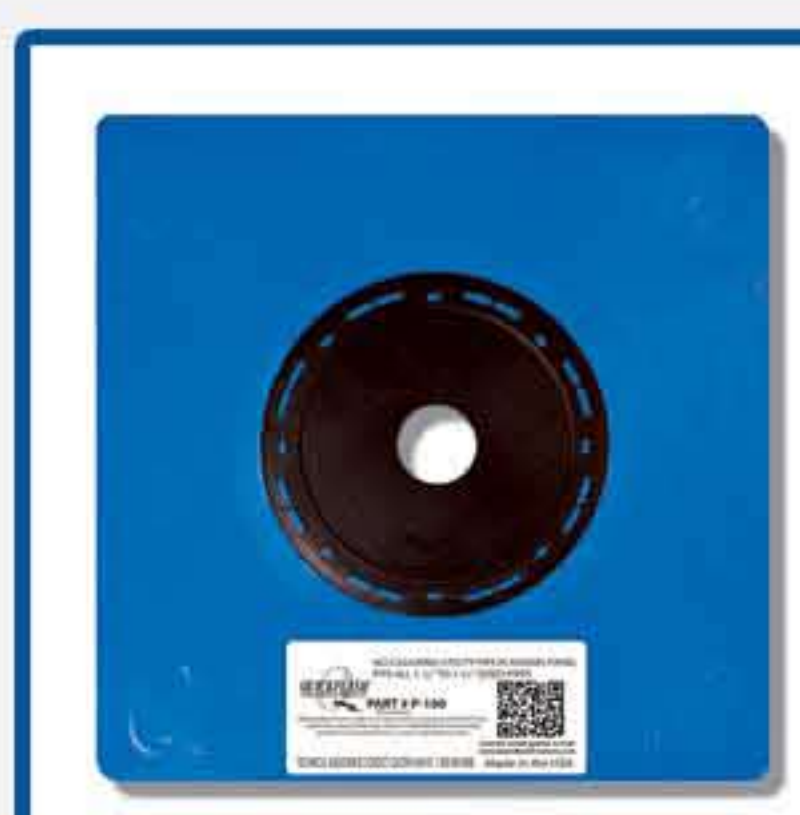
**P-2PS:**  
PLUMBING FLASHING PANEL  
Two piece system. Used on copper pipes  
with exterior T's sweated on.  
Cut out center to fit around 1/2" to 2"  
sized copper pipes. (IMPORTANT: Caulking  
is required to make seal at pipe to panel)



**P-50:**  
PLUMBING FLASHING PANEL  
Fits 1/2" to 3/4" sized pipes - copper, rigid,  
PVC, or ABS.  
(Can also be used for electrical conduit)



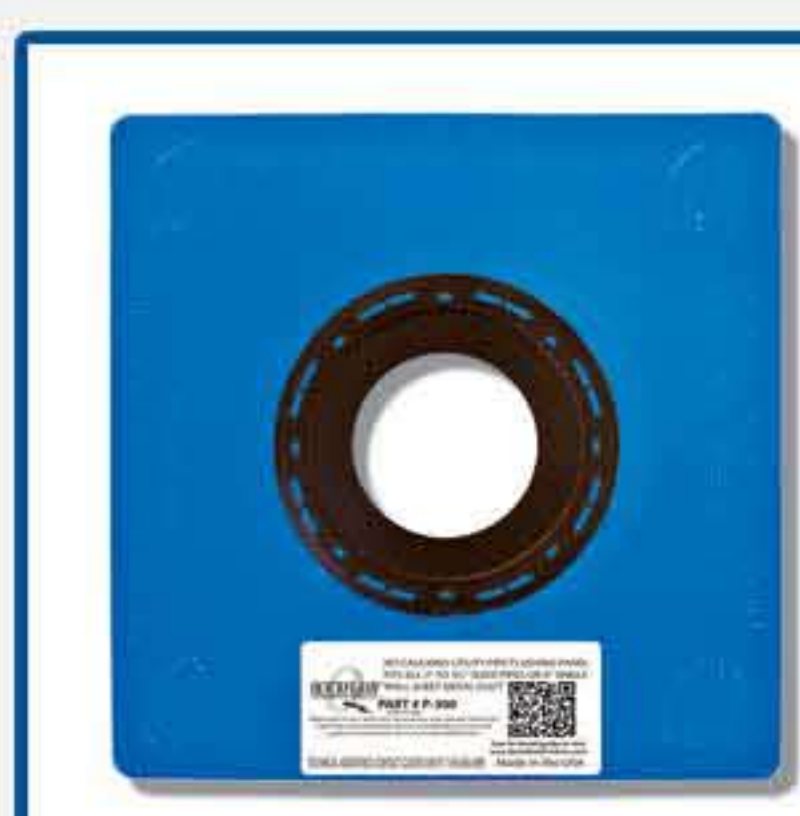
**P-100:**  
PLUMBING FLASHING PANEL  
Fits 1" to 1 1/4" sized pipes - copper, rigid,  
PVC, or ABS.  
(Can also be used for electrical conduit)



**P-150:**  
PLUMBING FLASHING PANEL  
Fits 1 1/2" to 1 3/4" sized pipes - copper,  
rigid, PVC, or ABS.  
(Can also be used for electrical conduit)



**P-200:**  
PLUMBING FLASHING PANEL  
Fits 2" to 2 1/2" sized pipes - copper, rigid,  
PVC, or ABS.  
(Can also be used for electrical conduit)  
Also fits 3" single wall sheet  
metal duct.



**P-300:**  
PLUMBING & HVAC FLASHING  
PANEL  
Fits 3" sized pipes - copper, rigid, PVC,  
or ABS  
Also fits 4" single wall sheet  
metal duct.

## PLUMBING & HVAC PANELS



**P-400:**  
PLUMBING & HVAC  
FLASHING PANEL  
Fits 4" sized pipes - copper, rigid,  
PVC, or ABS.  
Also fits 5" single wall sheet  
metal duct.



**P-600:**  
PLUMBING & HVAC  
FLASHING PANEL  
Fits 6" sized pipes - copper, rigid,  
PVC, or ABS.  
Also fits 6" & 7" single wall sheet  
metal duct.



**P-800:**  
PLUMBING & HVAC  
FLASHING PANEL  
Fits 8" sized pipes -  
copper, rigid, PVC, or ABS.  
Also fits 8" & 9" single wall  
sheet metal duct.



**P-1000:**  
PLUMBING & HVAC  
FLASHING PANEL  
Fits 10" sized pipes -  
copper, rigid, PVC, or ABS.  
Also fits 10" & 11" single wall  
sheet metal duct.



**P-1200:**  
PLUMBING & HVAC  
FLASHING PANEL  
Fits 12" sized pipes -  
copper, rigid, PVC, or ABS.  
Also fits 12" single wall  
sheet metal duct.

## A/C PANELS



**A/C U-C:**  
A/C LINE SET  
CURVED  
FLASHING PANEL  
Paintable to match  
exterior cladding.  
Used on 1-Coat Stucco,  
3-Coat Stucco, and  
Siding Exteriors.  
A/C U-C fits Line Sets  
with 1 1/2" - 2 3/4"  
Insulation Tubing.  
Hub must be primed and painted after installa-  
tion to validate warranty.



**A/C U-S:**  
A/C LINE SET  
SQUARED  
FLASHING PANEL  
Paintable to match  
exterior cladding.  
Used with all  
Siding Exteriors.  
A/C U-S fits Line Sets  
with 1 1/2" - 2 3/4"  
Insulation Tubing.  
Hub must be primed and painted after installa-  
tion to validate warranty.



**A/C 150-B  
A/C 250-B:**  
A/C LINE SET  
FLASHING PANEL  
Paintable to match  
exterior brick.  
Used with traditional  
Brick, and Cutered  
Stone Exteriors.  
A/C 150-B fits Line Sets  
with 1 1/2" - 2 1/2"  
Insulation Tubing  
A/C 250-B fits Line Sets  
with 2 1/4" - 3 1/2"  
Insulation Tubing.  
Hub must be primed and painted after installa-  
tion to validate warranty.



Rubber Seal inside  
Hub

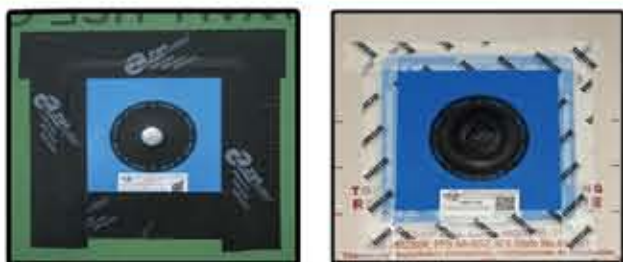
Warning: All Quickflash® products maximum heat threshold is 160°F. Quickflash® products are combustible and should be protected from flame and other high heat sources.



## Quickflash works with all types of claddings



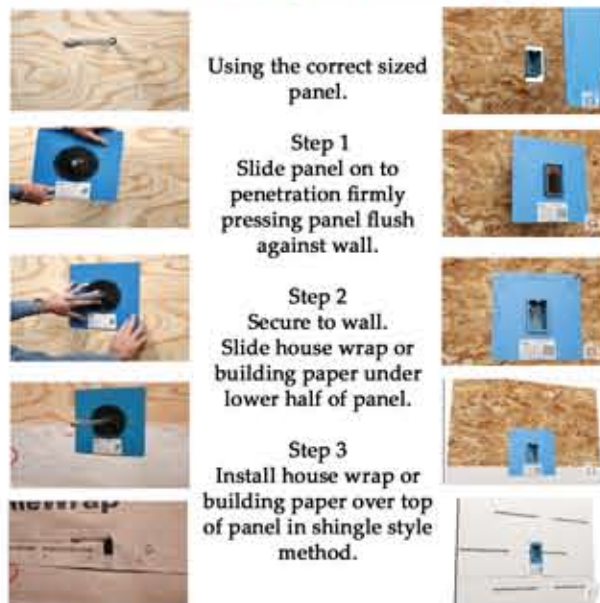
Works with Zip System® and Thermoply®



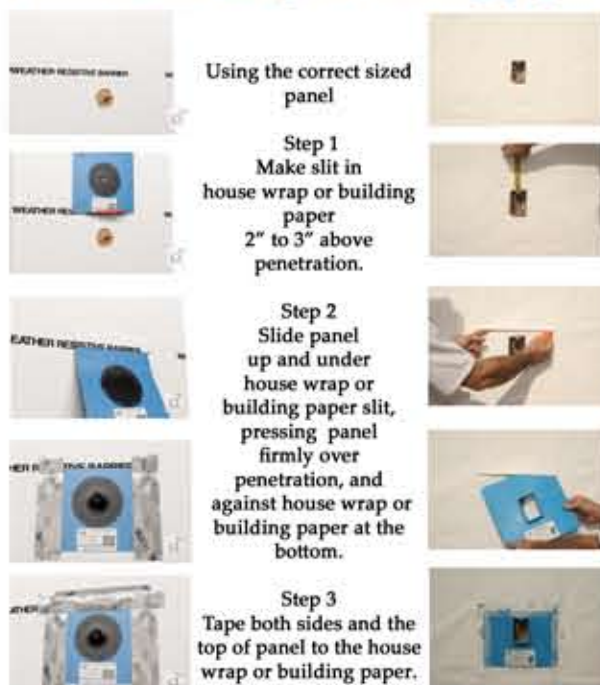
## Quickflash Install

Plumbing Methods Electrical

### Before house wrap or building paper



### After house wrap or building paper



Always refer to house wrap or building paper manufacturer's install guidelines.

## Top 10 Benefits

- Reduces liability
- Stops air leakage
- Helps prevent water intrusion
- Economical - saves time and labor
- Eliminates the need for sealants
- Non-corrosive, Non-conductive
- Only flashing specifically designed for wall penetrations
- Self sealing around fasteners
- Easy to integrate with building envelope and works with all cladding systems
- 10 Year limited warranty

## Scan for Install Guides



Quickflash Weatherproofing Products, Inc.  
4129 Wagon Trail Avenue  
Las Vegas, Nevada 89118  
(702) 614-6100  
(800) 963-6886  
(702) 614-4090 Fax



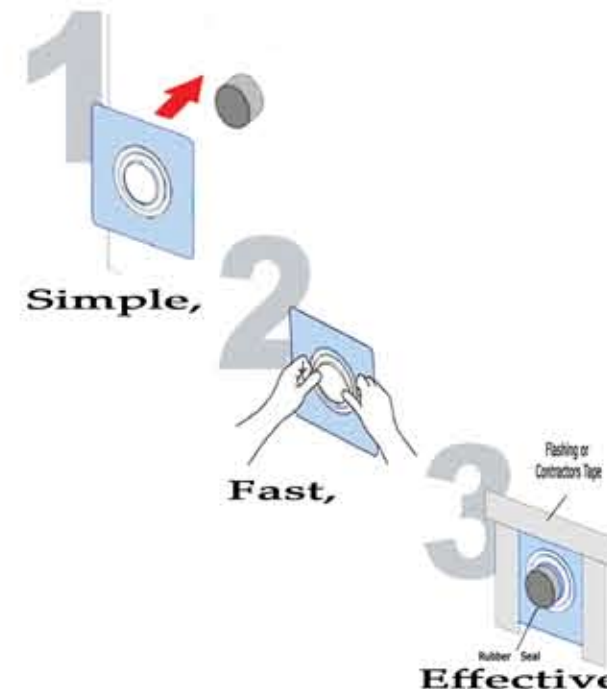
Made in the USA

Please visit us at:  
[www.Quickflashproducts.com](http://www.Quickflashproducts.com)

# QUICKFLASH®

WEATHERPROOFING PRODUCTS, INC.

FLASHING PANELS FOR WALL PENETRATIONS



## Quickflash Benefits

### Moisture Barrier



Create a weatherproof seal around electrical and plumbing exterior wall penetrations.

### Energy Efficiency



Products specifically designed to prevent air infiltration, creating a more comfortable and energy-efficient home.

### Reduce Insect Infestation



Helps keep the bugs out with a tight seal around a homes' exterior outlets, pipes, conduit, and light fixtures.

### Total Building Envelope



Part of a complete system to minimize exposure to problems such as latent defects and toxic mold.

