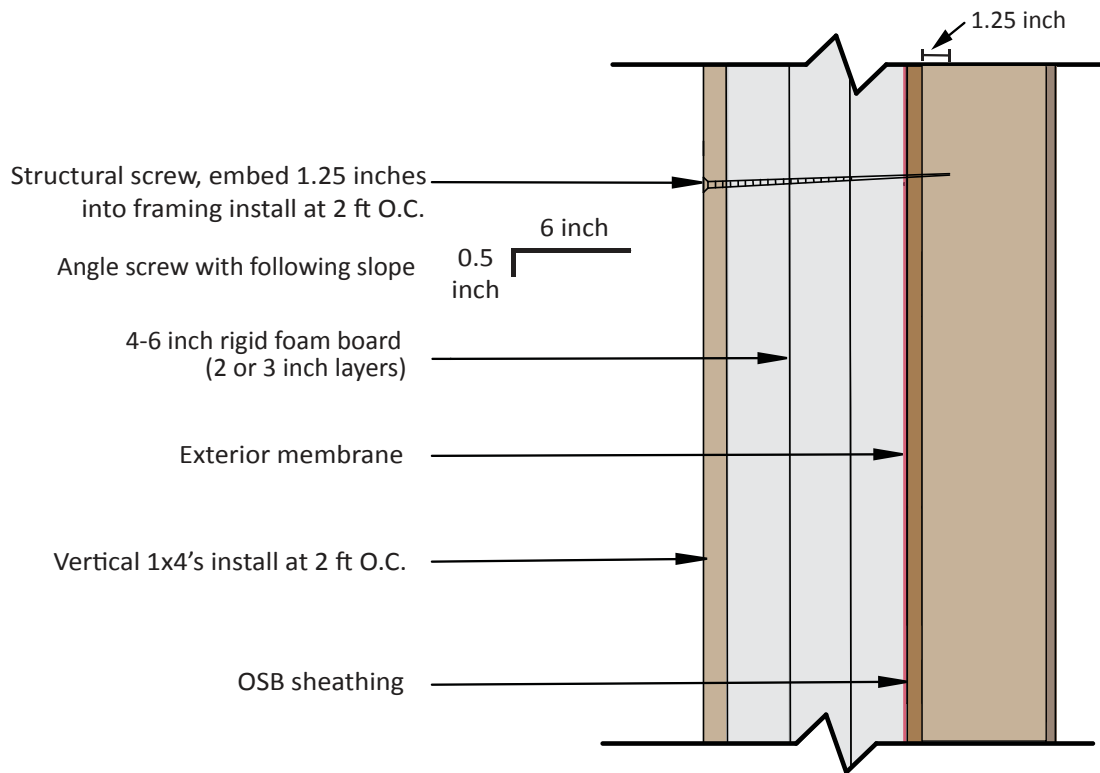
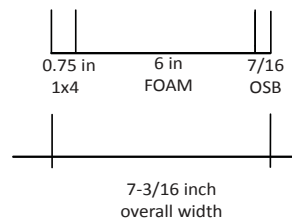


Furring and Siding

ATTACHMENT INFORMATION	
Vertical Load capacity of loaded screw from ESR4078	.187 inch
Oly Log/Timber Lok screw load capacity (136 lb/6 inch)(0.5 inch)= Shear=	11.3 lb
Hardie Plank 11.3 lb/(2 ft x 2.3 psf) = 2.5ft = 29 inch	Install screws 24 in O.C.*
Wood and vinyl siding Install screws per manufacturers specifications	Typically 24 in O.C.



SIDING WEIGHTS	
Hardie Plank	2.3 psf
Wood: 7/16 inch OSB	1.3 psf
Vinyl	0.5 psf



* O.C. - on center

Figure 9. FURRING AND SIDING DIMENSIONS, WEIGHTS AND ATTACHMENT DETAIL