



uponor

RADIANT HEATING AND
COOLING SYSTEMS

FAST TRAK™

INSTALLATION GUIDE

Fast Trak™
Installation Guide

Fast Trak™ Installation Guide

Published by Uponor

5925 148th Street West

Apple Valley, MN 55124 USA

Phone: 800.321.4739

Fax: 952.891.2008

www.uponorpro.com

© 2011 Uponor

All Rights Reserved.

First Edition April 2011

Printed in the United States of America

Table of Contents

Overview	1
System Description.	1
Fast Trak 0.5	1
Fast Trak 1.3i.	2
Edge Strips.	2
Movement Joints	2
Installation.	3
Required Equipment	3
Fast Trak 0.5 Installation	3
Fast Trak 1.3i Installation	8
Overpour Guidelines.	13
General Recommendations.	13
Overpour for Fast Trak 0.5	13
Overpour for Fast Trak 1.3	13
Recommended Overpour Products.	13
Required Volume Per Square Foot	14

Overview

Uponor Fast Trak™ is the ideal overpour installation method for remodel and retrofit applications. The preformed, knobbed panels make it easy to install $\frac{5}{16}$ ", $\frac{3}{8}$ " or $\frac{1}{2}$ " Uponor Wirsbo hePEX™ crosslinked polyethylene (PEX-a) tubing for radiant floor heating systems.

System Description

Uponor Fast Trak is available in two different options to meet any application: Fast Trak 0.5 and Fast Trak 1.3i.

Fast Trak 0.5

Fast Trak 0.5 (A5090313) is only $\frac{1}{2}$ " thick, eliminating the need to alter baseboards, moldings or doors. The product is made for $\frac{5}{16}$ " Wirsbo hePEX tubing and features an adhesive backing for easy installation to a slab or subfloor. The knobs on the panel feature holes to allow leveling compound to spread easily and bond firmly with the subfloor. The panels interlock to ensure proper alignment for tubing installation. Depending on type of cement used and local code, the total installation height can be as low as $\frac{3}{4}$ ".

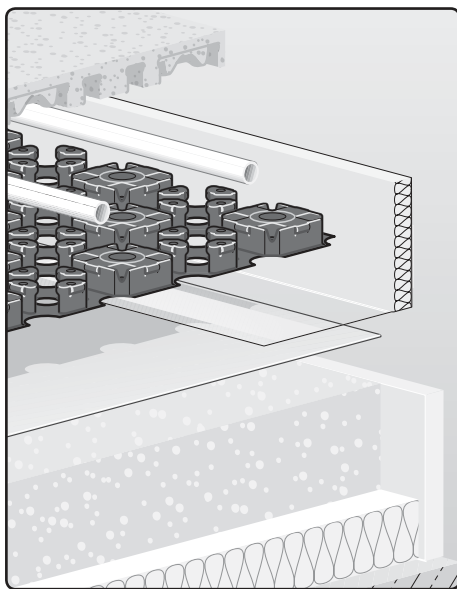


Figure 1: Fast Trak 0.5

Fast Trak 1.3i

Fast Trak 1.3i (A5090500) is slightly over 1¼" in height and is designed for ¾" or ½" Wirsbo hePEX tubing. Fast Trak 1.3i includes ½" insulation already in the panel, eliminating the added time and cost of installing insulation under the tubing. The panels interlock to ensure proper alignment for tubing installation. With a minimum of ¾" overpour, the total building height of the system is only about 2". This design gives a thermal break from the slab or subfloor and still has a manageable impact on the ceiling height, making for fast and easy installations in basement and garage applications.

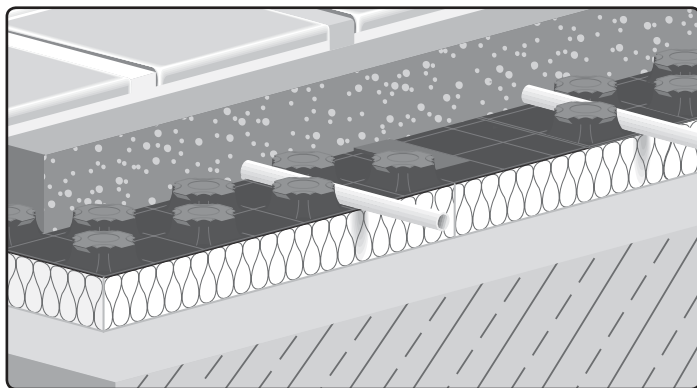


Figure 2: Fast Trak 1.3i

Edge Strips

Edge Strips (A5091000) serve an important function when installing Fast Trak panels. The Edge Strips prevent the overpour from seeping under the panels, protecting the surrounding structure from moisture damage and expansion forces. The strips install between the load distribution layer and the vertical building parts, covering the edge joint. The existing edge joint must always include Uponor Edge Strips to the height of the leveling layer and the new floor covering to be installed.



Important! Do not remove the protruding sections of the Edge Strips until the floor covering is installed.

Movement Joints

Movement joints are joints in the overpour that separate the overpour fields. Movement joints must be extended with a suitable joint profile to the height of the leveling layer and new floor covering to be installed. Consult your structural engineer as to the placement and makeup of the construction, expansion and control joints.

Installation

Required Equipment

- Uponor Edge Strips (A5091000)
- Uponor PEX Tubing Cutter (E6081125 or E6081128)
- Utility knife
- Tape measure
- Duct tape or similar
- Uponor Service Wrench (E6111188) for connecting tubing to manifold

Fast Trak 0.5 Installation

Fast Trak 0.5 features an adhesive backing for easy installation to a slab or subfloor and is designed with spaces between the knobs to ensure leveling compound spreads easily and bonds firmly with the substructure.

The graphic below illustrates a Fast Trak 0.5 installation, using an existing slab, wood subfloor or tiled floor.

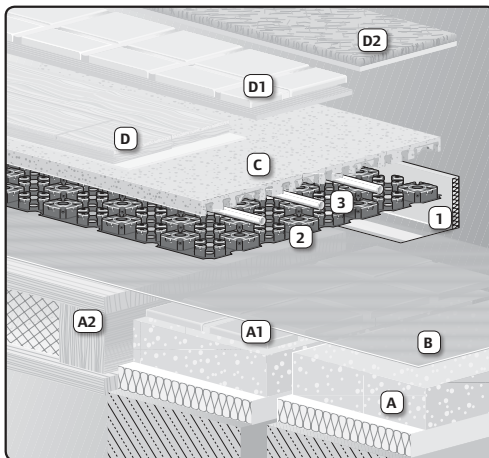


Figure 3: Fast Trak 0.5 Installation Applications

1. Uponor Edge Strip (A5091000)
2. Uponor Fast Trak 0.5 (A5090313)
3. Uponor $\frac{5}{16}$ " Wirsbo hePEX tubing
- A. Existing screed with underlying thermal insulation
- A1. Tiled floor
- A2. Timber joist floor
- B. Vapor barrier (optional)
- C. Self-leveling compound
- D. Parquet/laminate floor with additional separating layer or adhesive
- D1. Tiles with tile adhesive and grout
- D2. Carpet with carpet adhesive

Refer to the following instructions to properly install Fast Trak 0.5.

1. Before installation, ensure the subsurface is dry, firm and clean. Dirt, debris or dust on the subsurface will hinder adhesive adherence. Ensure the panel has a proper grip to the subsurface and the subsurface has a sufficient load-bearing capacity (use a suitable leveling compound to achieve this, if necessary).
2. Install the Edge Strips, making sure the polyethylene (PE) foil is laying down on the subsurface.

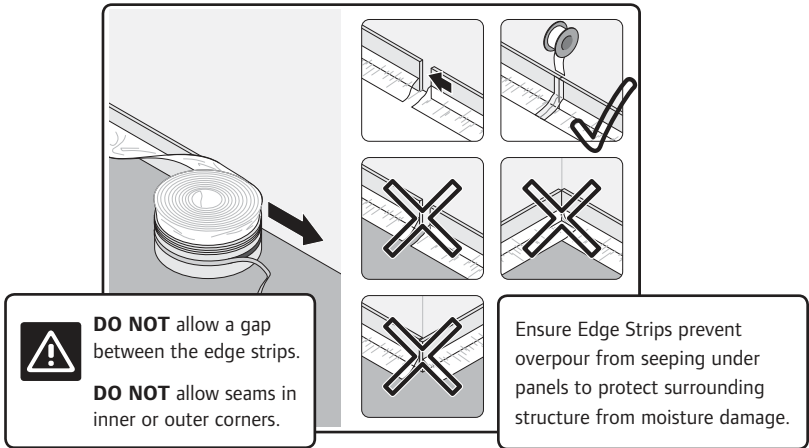


Figure 4: Install Edge Strips

Note: Ensure the Edge Strips extend from the load-bearing subsurface to the upper edge of the floor covering.

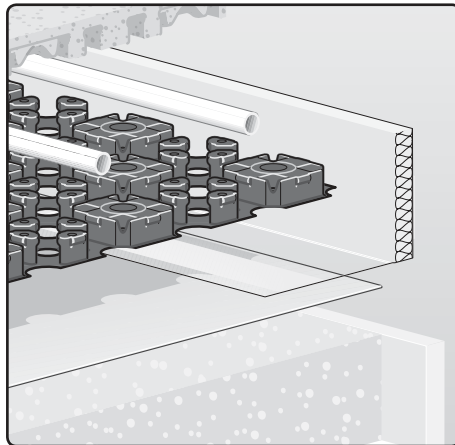
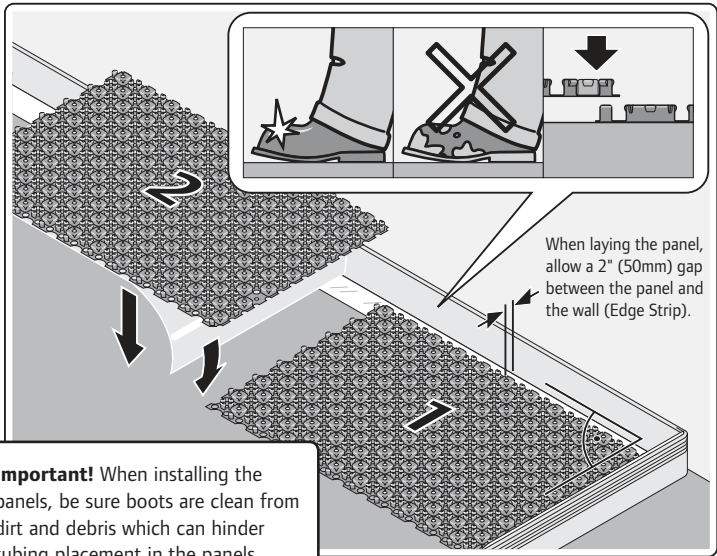


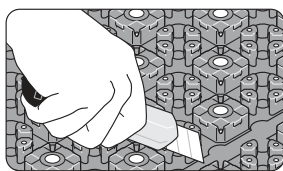
Figure 5: Proper Edge Strip Location

3. Lay the Fast Trak 0.5 panels on the subfloor, ensuring a 2" (50mm) gap between the panel and the wall (Edge Strip).
4. Remove the adhesive backing to secure the panels to the floor. Ensure the panel is covering the PE foil section of the Edge Strip, creating a seal so no leveling compound can get behind the Edge Strip.



Important! When installing the panels, be sure boots are clean from dirt and debris which can hinder tubing placement in the panels.

Figure 6: Install Panels



Warning: For safety reasons, take care to retract the knife when not in use.

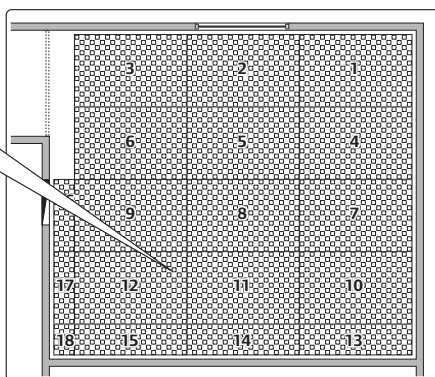


Figure 7: Fit Panels to Floor Area

5. Use a utility knife to cut the panels to fit the flooring area.
6. Snap the tubing into the panels using gentle pressure with your foot. Lay the tubing from the outer wall(s) towards the inner wall(s) and mark the tubing for easy identification when connecting to the manifold.

Note: Minimum bend radius for $\frac{5}{16}$ " Wirsbo hePEX tubing in the Fast Trak 0.5 panel is 3" (75mm).

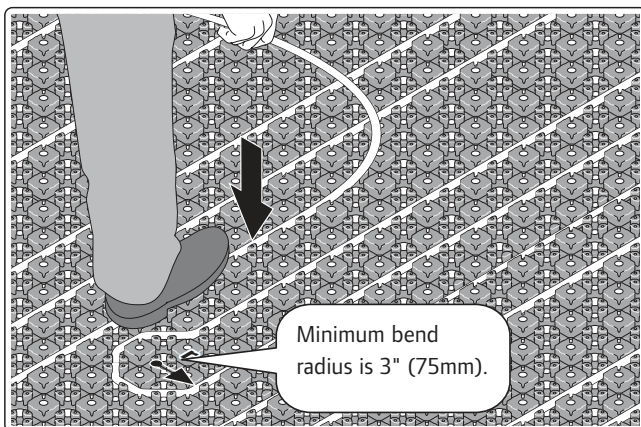


Figure 8: Install Tubing

7. Connect the tubing to the manifold. Refer to the Uponor TruFLOW™ or Engineered Plastic (EP) Heating Manifold instruction sheets for filling, purging and balancing instructions.

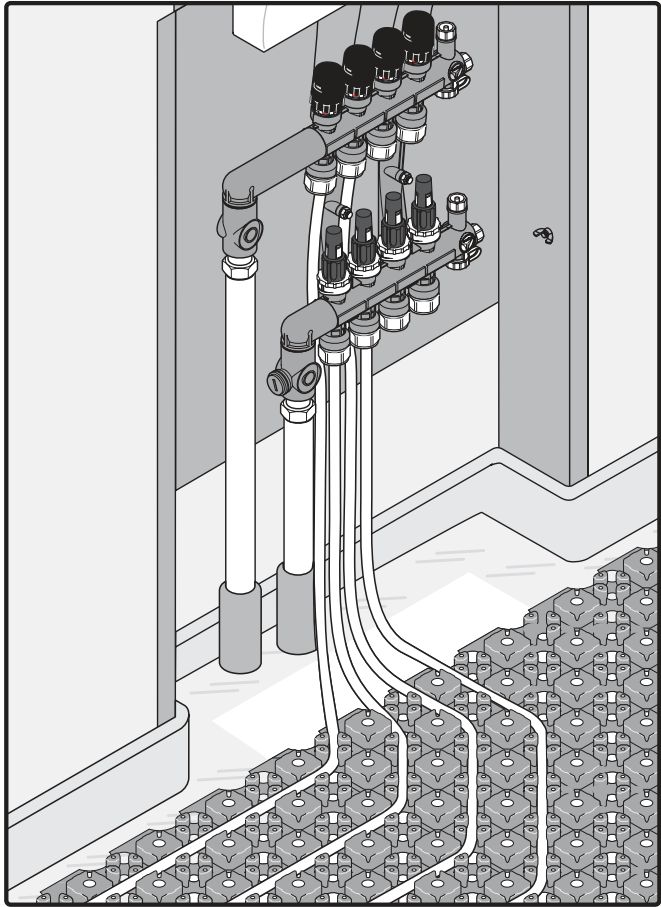


Figure 9: Connect Tubing to Manifold

Fast Trak 1.3i Installation

Fast Trak 1.3i is slightly more than 1¼" in height and is designed for ¾" or ½" Wirsbo hePEX tubing. Fast Trak 1.3i includes insulation already in the panel, eliminating the added time and cost of installing insulation under the tubing.

The graphic below illustrates a Fast Trak 1.3i installation.

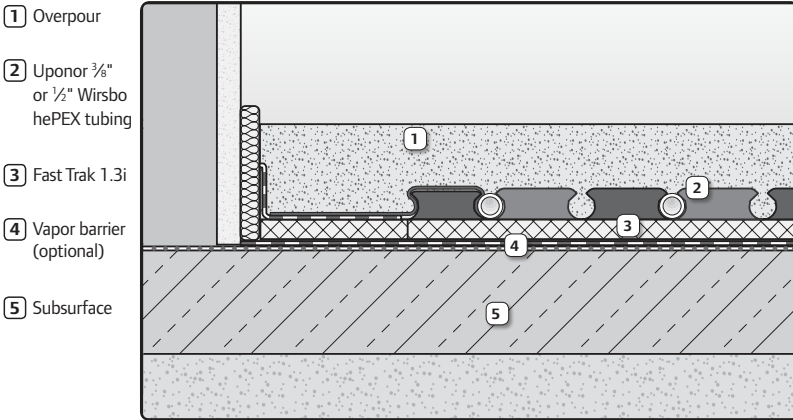
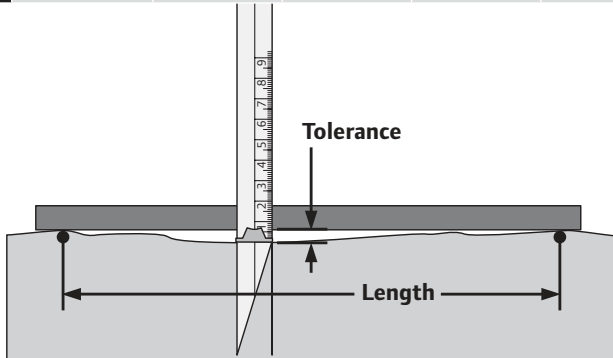


Figure 10: Fast Trak 1.3i Installation Application



Important! When installing Fast Trak 1.3i, refer to the following chart for maximum floor unevenness.

Length	0.33 ft. (0.1m)	3.3 ft. (1m)	13 ft. (4m)	33 ft. (10m)	49 ft. (15m)
Tolerance	0.2" (5mm)	0.3" (8mm)	0.5" (12mm)	0.6" (15mm)	0.8" (20mm)



Refer to the following instructions to properly install Fast Trak 1.3i.

1. Install the edge strips, making sure the PE foil is not falling down. The PE foil will be folded down on top of the panel. These gaps provide pathways for the overpour to seep into the wall and floor.

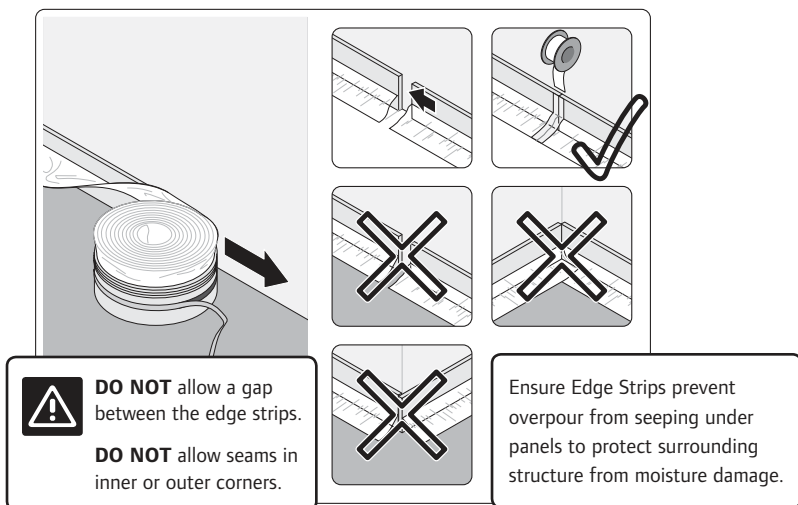


Figure 11: Install Edge Strips

2. Lay the Fast Trak 1.3i panels on the subfloor, using a utility knife to cut the panels to fit the flooring area. Note that the panels feature two edges (one along the long side of the panel and one along the short side) that allow the panels to interlock.



Warning: For safety reasons, take care to retract the knife when not in use.

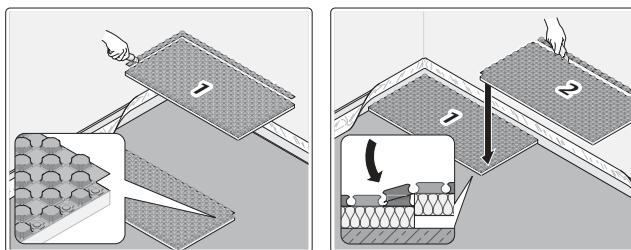


Figure 12: Install Panels

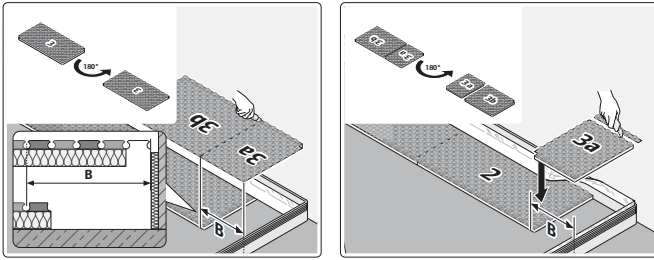


Figure 13: Fit Panels to Floor Area

3. If a panel must be cut down to fit into a tight space, use duct tape or similar to seal the gap between the panels.

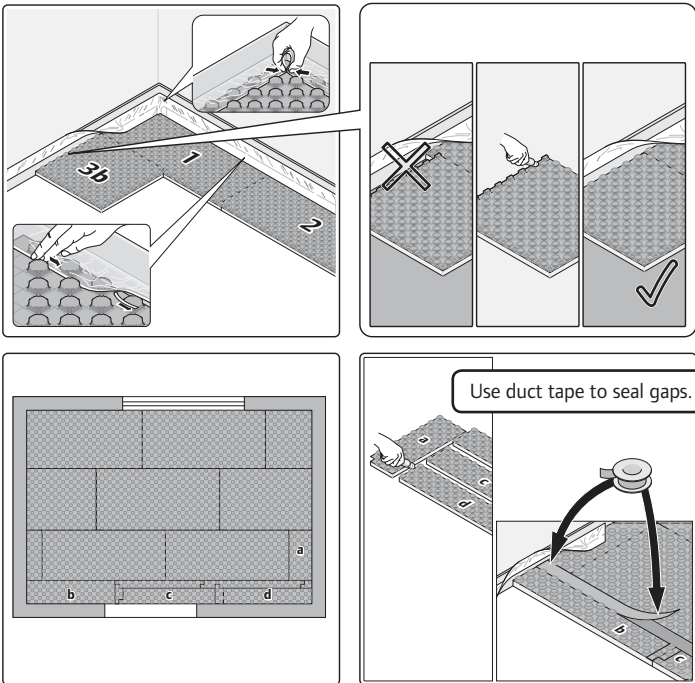


Figure 14: Use Duct Tape to Seal Gaps Between Panels

4. Remove the black protecting strip and adhere the PE foil to the panels. Be sure to get a good seal so no overpour material seeps under the panel. If necessary, use duct tape or similar to seal gaps.

5. Snap the tubing into the panels using gentle pressure with your foot. Lay the tubing from the outer wall(s) towards the inner wall(s) and mark the tubing for easy identification when connecting to the manifold.

Note: Minimum bend radius for $\frac{3}{8}$ " Wirsbo hePEX tubing in the Fast Trak 1.3i panel is 3" (75mm); $\frac{1}{2}$ " tubing is 3 $\frac{1}{2}$ " (88mm).

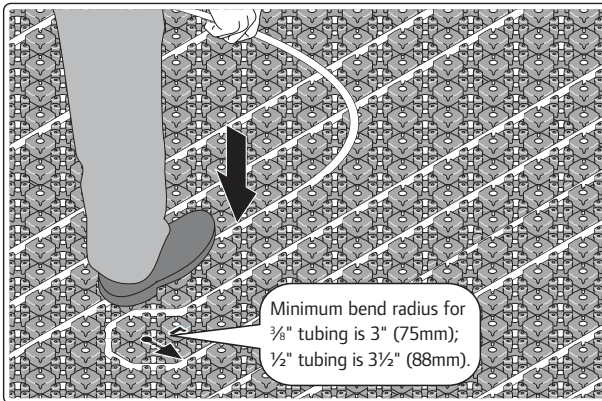


Figure 15: Install Tubing

6. Connect the tubing to the manifold. Refer to the Uponor TruFLOW or EP Heating Manifold instruction sheets for filling, purging and balancing instructions.

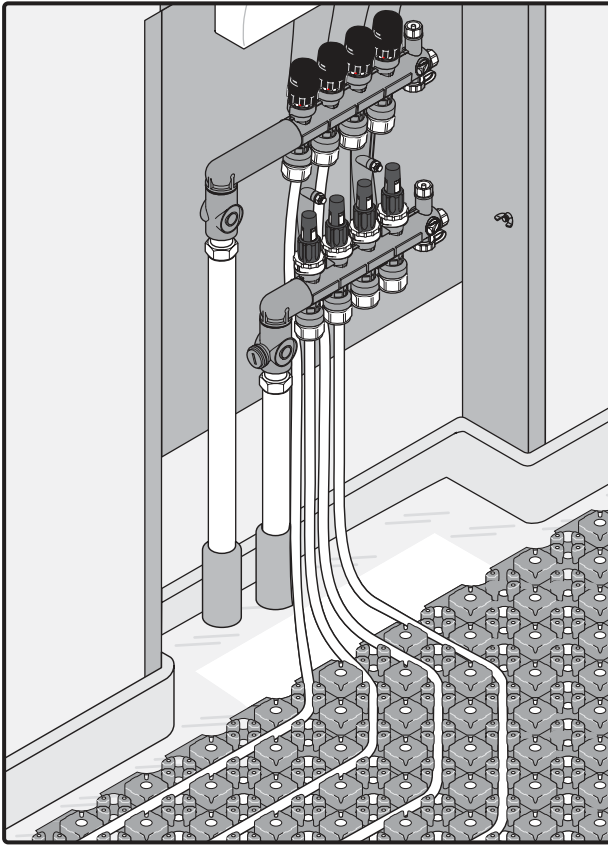


Figure 16: Connect Tubing to Manifold

Overpour Guidelines

General Recommendations

When pouring the leveling compound or lightweight concrete, make sure to comply with local code and always follow the overpour manufacturer's guidelines to comply with load and strength requirements.



Important! Do not turn on the radiant heating system until the overpour is completely cured. Refer to the overpour manufacturer's instructions before turning the radiant heating system on to avoid cracking or damaging the overpour.

Overpour for Fast Trak 0.5

For Fast Trak 0.5, the minimum overpour can be as low as ¼" (6mm) over the panel knobs. However, it is important to check local codes which may require thicker overpour. If the tubing is spaced more than 6" on center, consider a thicker overpour to avoid thermal striping.

Overpour for Fast Trak 1.3i

For Fast Trak 1.3i, the minimum overpour should be ¾" (19mm) over the panel knobs. Failure to follow the recommended ¾" guidelines risks screed cracking or thermal striping.

Recommended Overpour Products

It is important to use an overpour product that is designed especially for use with radiant floor heating systems to handle higher temperatures. Uponor recommends the following overpour products for use with Fast Trak.

- Allied Custom Gypsum AccuCrete® AccuRadiant®
- ARDEX TL WOOD™
- Hacker Industries, Inc. Firm-Fill®
- Maxxon Therma-Floor®
- United States Gypsum (USG) LEVELROCK® RH

Required Volume Per Square Foot

Refer to the table below for required overpour volume per square foot.

Fast Trak 0.5

Volume of Pour for $\frac{1}{4}$ " Overpour
Above Knobs with $\frac{5}{16}$ " Tubing

Tubing Spacing	in ³ /ft ²	ft ³ /ft ²
4"	91.2	0.0528
6"	93.0	0.0538
8"	93.8	0.0543
10"	94.4	0.0546
12"	94.7	0.0548

Fast Trak 1.3i

Volume of Pour for $\frac{3}{4}$ " Overpour
Above Knobs with $\frac{3}{8}$ " Tubing

Tubing Spacing	in ³ /ft ²	ft ³ /ft ²
4"	190.0	0.1099
6"	192.3	0.1113
8"	193.5	0.1120
10"	194.2	0.1124
12"	194.7	0.1127

Fast Trak 0.5

Volume of Pour for $\frac{3}{4}$ " Overpour
Above Knobs with $\frac{5}{16}$ " Tubing

Tubing Spacing	in ³ /ft ²	ft ³ /ft ²
4"	163.2	0.0945
6"	165.0	0.0955
8"	165.8	0.0960
10"	166.4	0.0963
12"	166.7	0.0965

Fast Trak 1.3i

Volume of Pour for $\frac{3}{4}$ " Overpour
Above Knobs with $\frac{1}{2}$ " Tubing

Tubing Spacing	in ³ /ft ²	ft ³ /ft ²
4"	186.0	0.1076
6"	189.7	0.1098
8"	191.5	0.1108
10"	192.6	0.1115
12"	193.4	0.1119

Uponor, Inc.

5925 148th Street West
Apple Valley, MN 55124 USA
Tel: 800.321.4739
Fax: 952.891.2008

Web: www.uponorpro.com

Uponor Ltd.

2000 Argentia Rd., Plaza 1, Ste. 200
Mississauga, ON L5N 1W1 CANADA
Tel: 888.994.7726
Fax: 800.638.9517

Web: www.uponor.ca

uponor