

SUBSTANTIAL EFFORT HAS BEEN MADE TO ENSURE THAT THE INFORMATION IN THIS DETAIL DRAWING IS ACCURATE. DÖRKEN SYSTEMS INC. CANNOT ACCEPT RESPONSIBILITY FOR ANY ERRORS OR OVERSIGHTS IN THE USE OF THIS MATERIAL OR IN THE PREPARATION OF ARCHITECTURAL OR ENGINEERING PLANS. THE DESIGN PROFESSIONAL MUST RECOGNIZE THAT NO DESIGN DETAIL CAN SUBSTITUTE FOR EXPERIENCED ENGINEERING AND PROFESSIONAL JUDGEMENT.

TITLE:

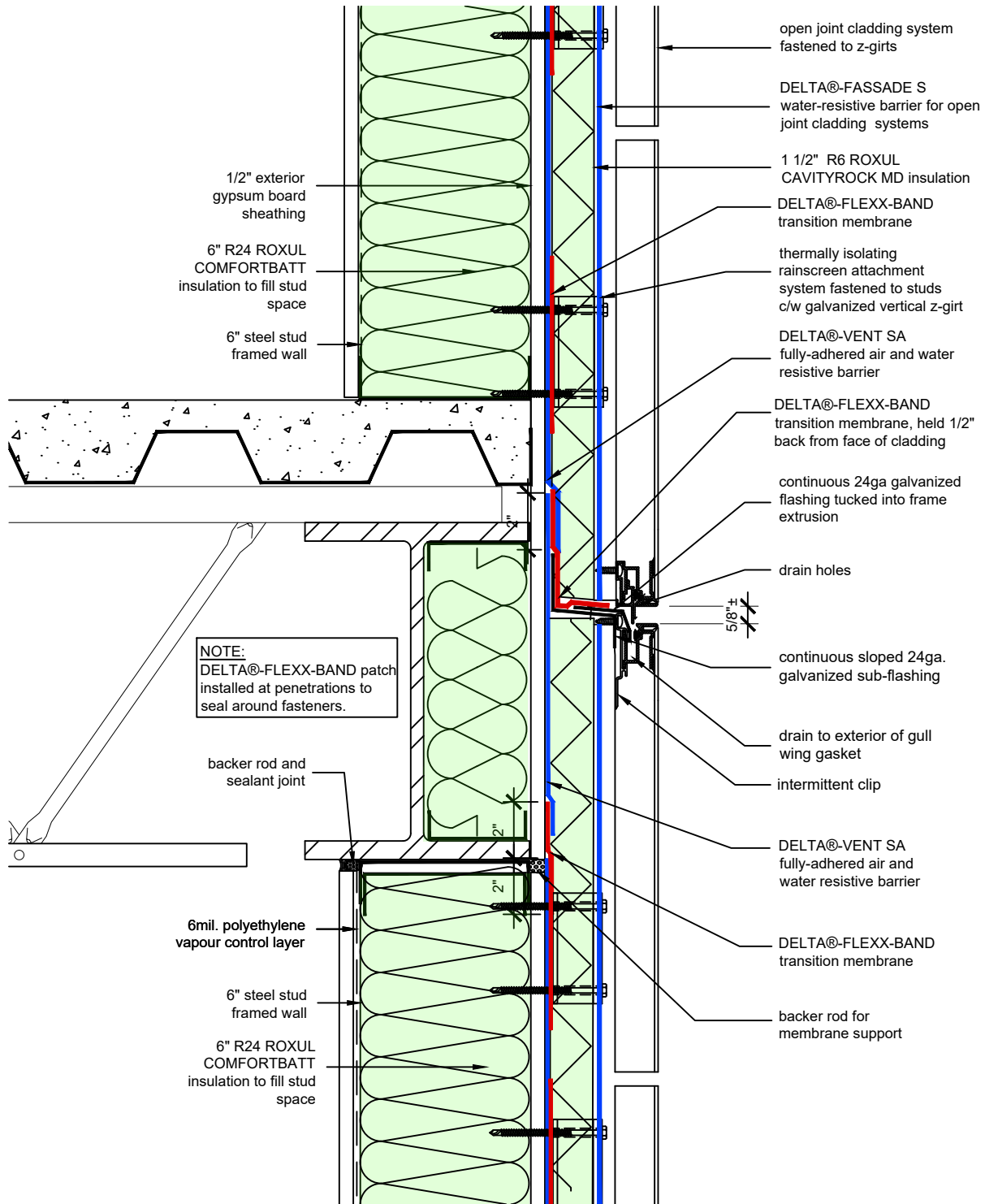
**WALL ASSEMBLY #7:  
OPEN JOINT CLADDING  
SYSTEM TYPICAL BASE OF  
WALL AT FOUNDATION**

DRAWN BY: DÖRKEN SYSTEMS INC.

**DÖRKEN**

**DELTA®**

4655 DELTA WAY BEAMSVILLE, ON. L0R 1B4 CANADA  
1-888-433-5824 or 1-905-563-3255



**NOTE:**  
 DELTA®-FLEXX-BAND patch  
 installed at penetrations to  
 seal around fasteners.

SUBSTANTIAL EFFORT HAS BEEN MADE TO ENSURE THAT THE INFORMATION IN THIS DETAIL DRAWING IS ACCURATE. DÖRKEN SYSTEMS INC. CANNOT ACCEPT RESPONSIBILITY FOR ANY ERRORS OR OVERSIGHTS IN THE USE OF THIS MATERIAL OR IN THE PREPARATION OF ARCHITECTURAL OR ENGINEERING PLANS. THE DESIGN PROFESSIONAL MUST RECOGNIZE THAT NO DESIGN DETAIL CAN SUBSTITUTE FOR EXPERIENCED ENGINEERING AND PROFESSIONAL JUDGEMENT.

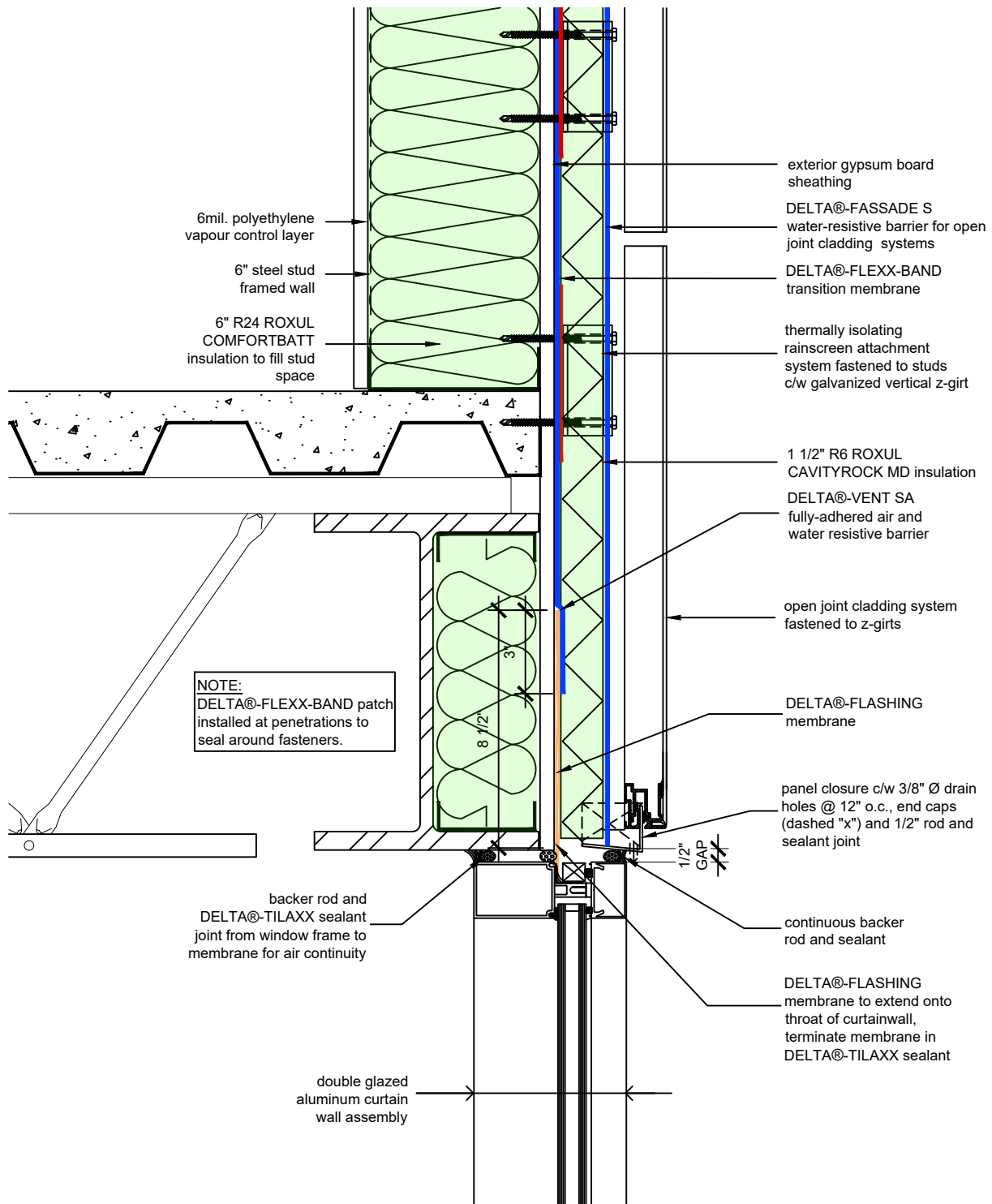
TITLE:

**WALL ASSEMBLY #7:  
 OPEN JOINT CLADDING  
 SYSTEM TYPICAL CLADDING  
 ATTACHMENT AT FLOOR**

DRAWN BY: DÖRKEN SYSTEMS INC.



4655 DELTA WAY BEAMSVILLE, ON. L0R 1B4 CANADA  
 1-888-433-5824 or 1-905-563-3255



**NOTE:**  
 DELTA@-FLEXX-BAND patch  
 installed at penetrations to  
 seal around fasteners.

SUBSTANTIAL EFFORT HAS BEEN MADE TO ENSURE THAT THE INFORMATION IN THIS DETAIL DRAWING IS ACCURATE. DÖRKEN SYSTEMS INC. CANNOT ACCEPT RESPONSIBILITY FOR ANY ERRORS OR OVERSIGHTS IN THE USE OF THIS MATERIAL OR IN THE PREPARATION OF ARCHITECTURAL OR ENGINEERING PLANS. THE DESIGN PROFESSIONAL MUST RECOGNIZE THAT NO DESIGN DETAIL CAN SUBSTITUTE FOR EXPERIENCED ENGINEERING AND PROFESSIONAL JUDGEMENT.

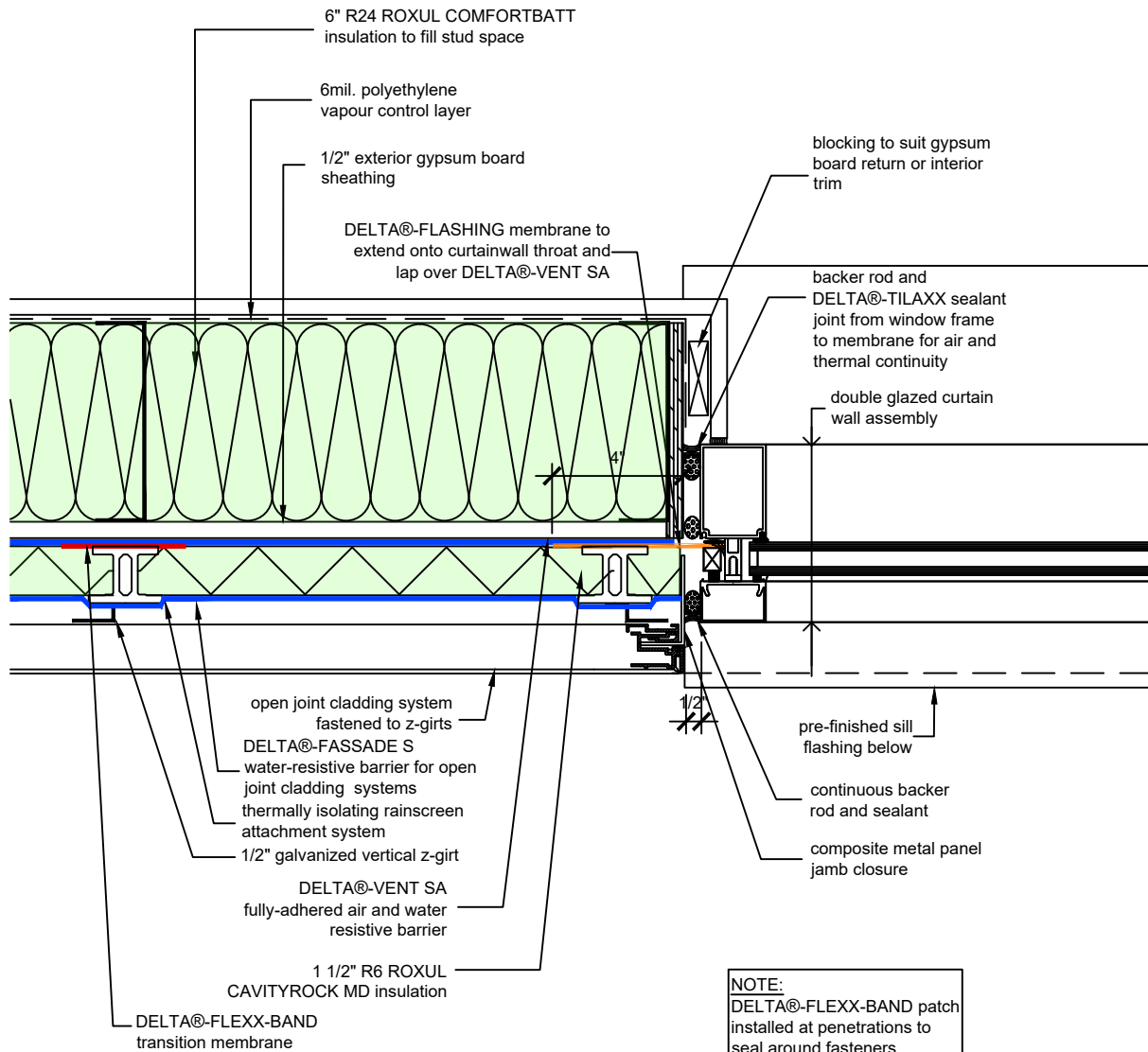
TITLE:  
**WALL ASSEMBLY #7:  
 OPEN JOINT CLADDING  
 SYSTEM TYPICAL CURTAIN  
 WALL HEAD**

DRAWN BY: DÖRKEN SYSTEMS INC.

**DÖRKEN**

**DELTA®**

4655 DELTA WAY BEAMSVILLE, ON. L0R 1B4 CANADA  
 1-888-433-5824 or 1-905-563-3255



SUBSTANTIAL EFFORT HAS BEEN MADE TO ENSURE THAT THE INFORMATION IN THIS DETAIL DRAWING IS ACCURATE. DÖRKEN SYSTEMS INC. CANNOT ACCEPT RESPONSIBILITY FOR ANY ERRORS OR OVERSIGHTS IN THE USE OF THIS MATERIAL OR IN THE PREPARATION OF ARCHITECTURAL OR ENGINEERING PLANS. THE DESIGN PROFESSIONAL MUST RECOGNIZE THAT NO DESIGN DETAIL CAN SUBSTITUTE FOR EXPERIENCED ENGINEERING AND PROFESSIONAL JUDGEMENT.

TITLE:

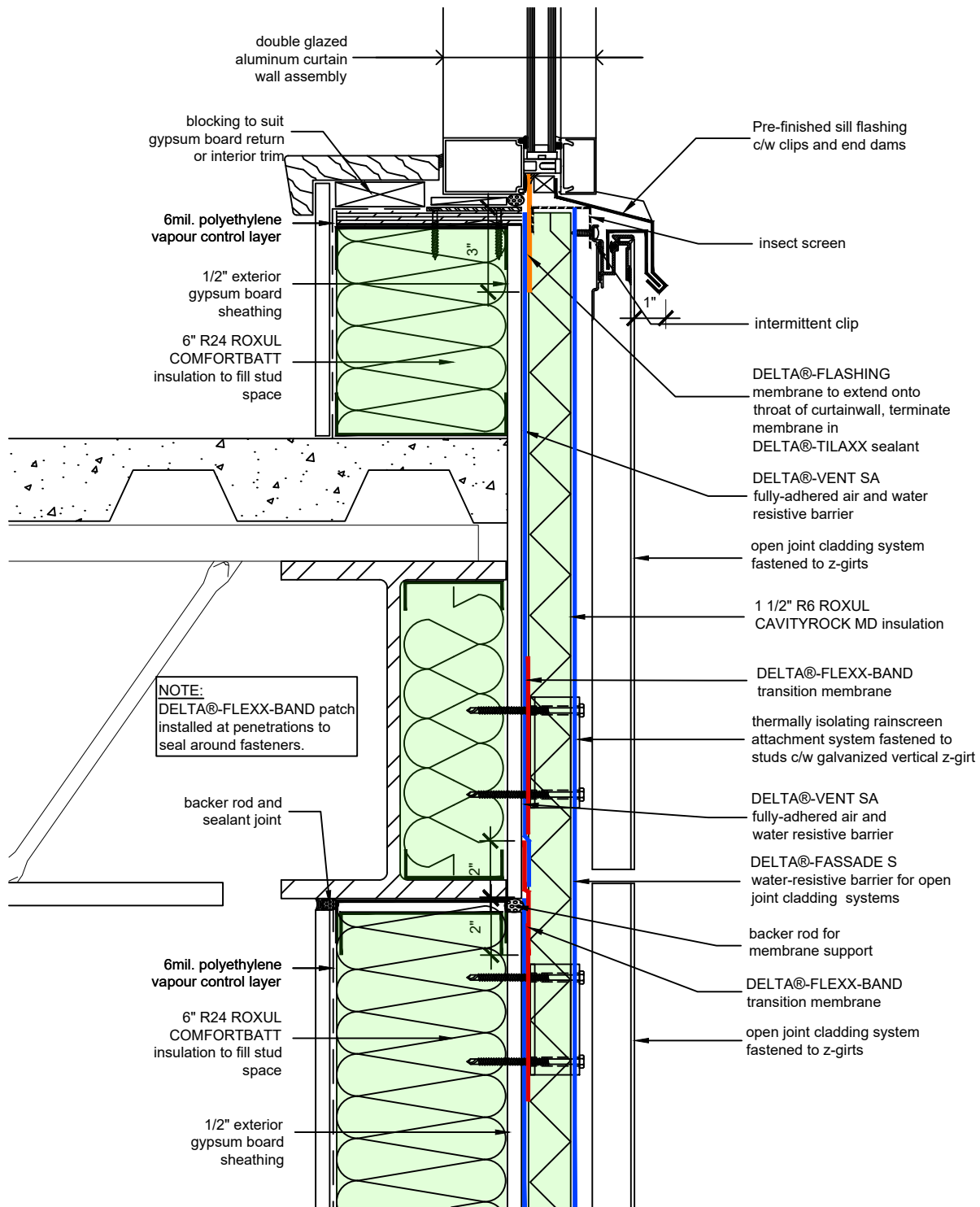
**WALL ASSEMBLY #7:  
OPEN JOINT CLADDING  
SYSTEM TYPICAL CURTAIN  
WALL JAMB**

DRAWN BY: DÖRKEN SYSTEMS INC.

**DÖRKEN**

**DELTA**

4655 DELTA WAY BEAMSVILLE, ON. L0R 1B4 CANADA  
1-888-433-5824 or 1-905-563-3255



SUBSTANTIAL EFFORT HAS BEEN MADE TO ENSURE THAT THE INFORMATION IN THIS DETAIL DRAWING IS ACCURATE. DÖRKEN SYSTEMS INC. CANNOT ACCEPT RESPONSIBILITY FOR ANY ERRORS OR OVERSIGHTS IN THE USE OF THIS MATERIAL OR IN THE PREPARATION OF ARCHITECTURAL OR ENGINEERING PLANS. THE DESIGN PROFESSIONAL MUST RECOGNIZE THAT NO DESIGN DETAIL CAN SUBSTITUTE FOR EXPERIENCED ENGINEERING AND PROFESSIONAL JUDGEMENT.

TITLE:

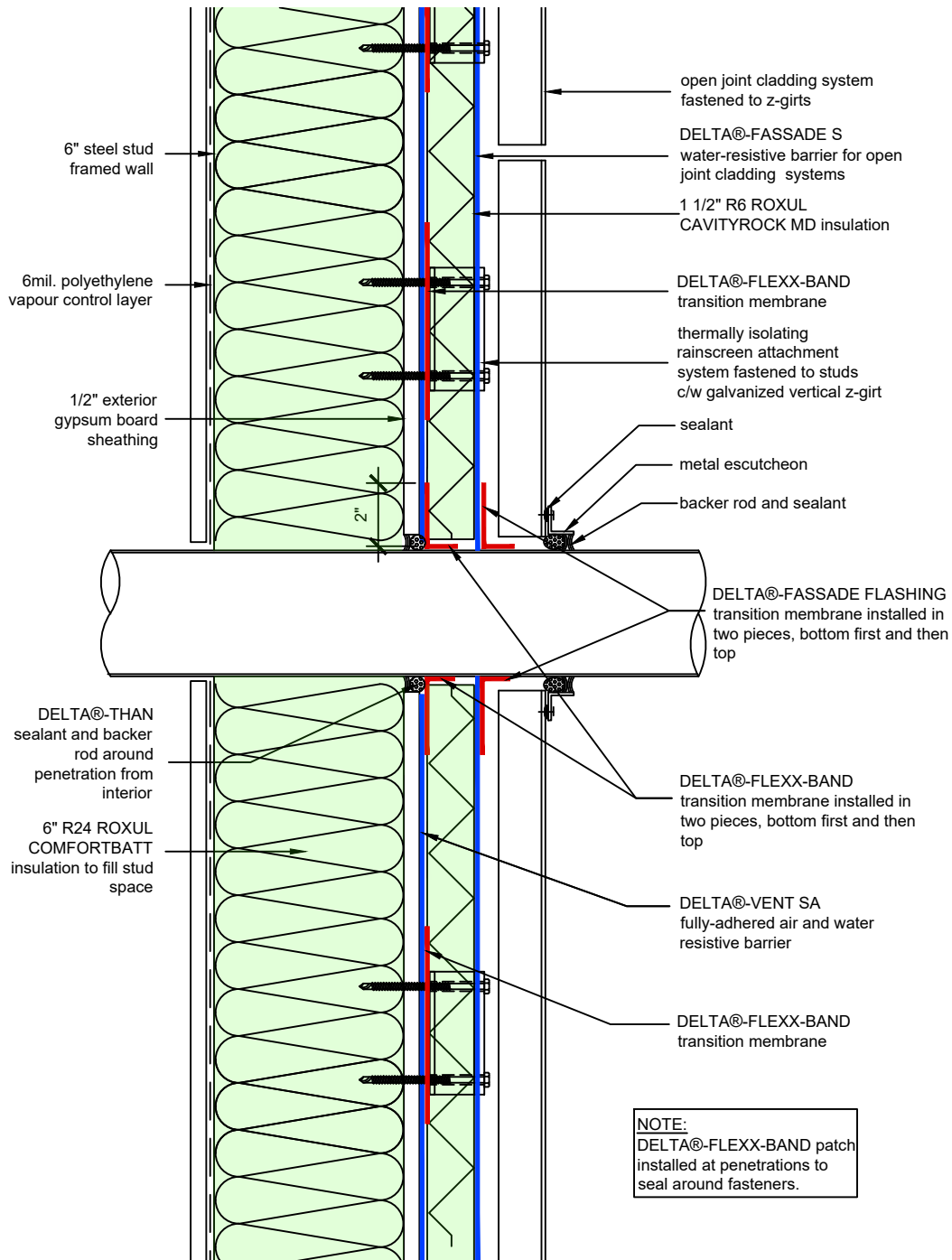
**WALL ASSEMBLY #7:  
OPEN JOINT CLADDING  
SYSTEM TYPICAL CURTAIN  
WALL SILL**

DRAWN BY: DÖRKEN SYSTEMS INC.

**DÖRKEN**

**DELTA**

4655 DELTA WAY BEAMSVILLE, ON. L0R 1B4 CANADA  
1-888-433-5824 or 1-905-563-3255



SUBSTANTIAL EFFORT HAS BEEN MADE TO ENSURE THAT THE INFORMATION IN THIS DETAIL DRAWING IS ACCURATE. DÖRKEN SYSTEMS INC. CANNOT ACCEPT RESPONSIBILITY FOR ANY ERRORS OR OVERSIGHTS IN THE USE OF THIS MATERIAL OR IN THE PREPARATION OF ARCHITECTURAL OR ENGINEERING PLANS. THE DESIGN PROFESSIONAL MUST RECOGNIZE THAT NO DESIGN DETAIL CAN SUBSTITUTE FOR EXPERIENCED ENGINEERING AND PROFESSIONAL JUDGEMENT.

TITLE:

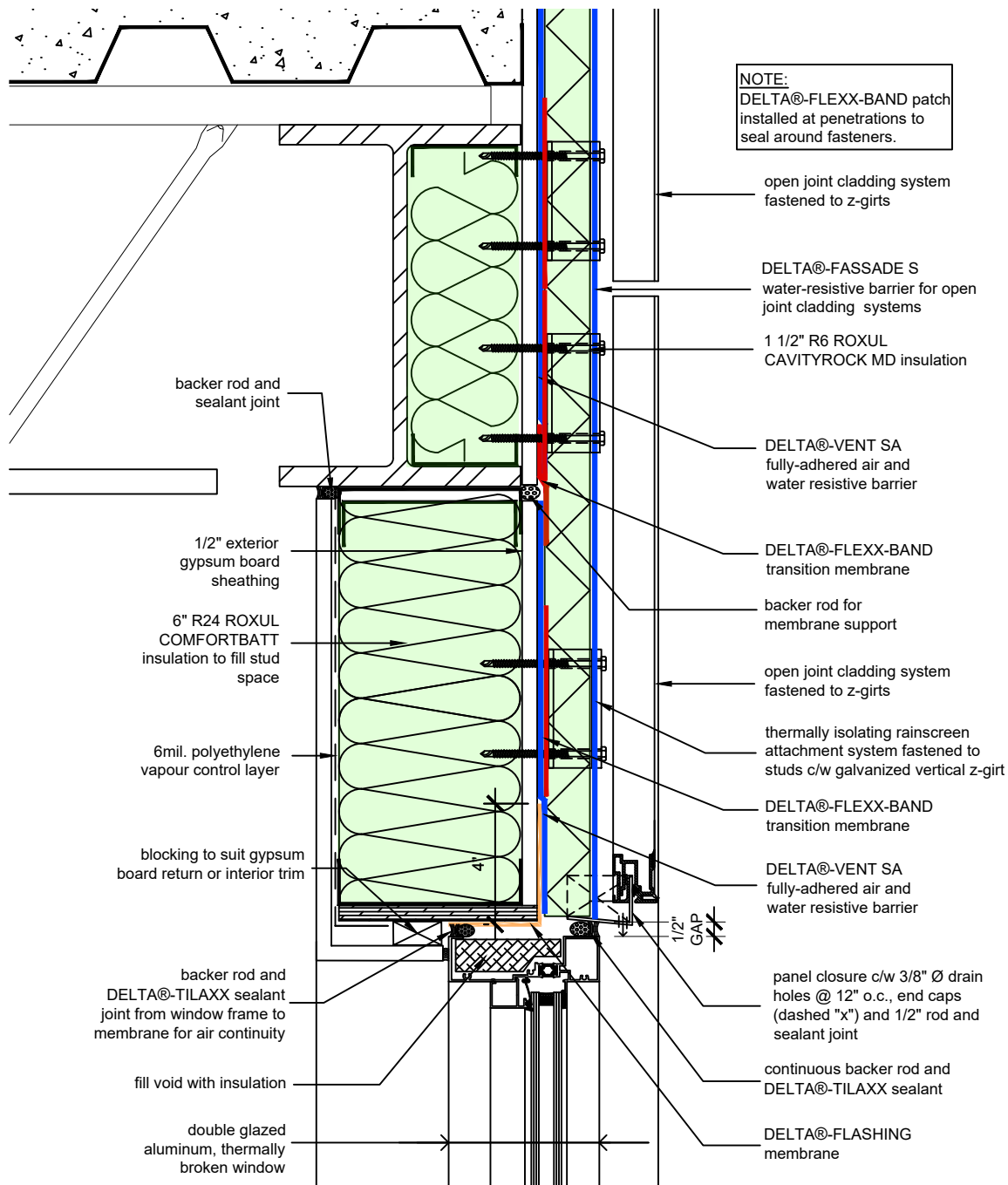
**WALL ASSEMBLY #7:  
OPEN JOINT CLADDING  
SYSTEM TYPICAL  
PENETRAITON**

DRAWN BY: DÖRKEN SYSTEMS INC.

**DÖRKEN**

**DELTA®**

4655 DELTA WAY BEAMSVILLE, ON. L0R 1B4 CANADA  
1-888-433-5824 or 1-905-563-3255



SUBSTANTIAL EFFORT HAS BEEN MADE TO ENSURE THAT THE INFORMATION IN THIS DETAIL DRAWING IS ACCURATE. DÖRKEN SYSTEMS INC. CANNOT ACCEPT RESPONSIBILITY FOR ANY ERRORS OR OVERSIGHTS IN THE USE OF THIS MATERIAL OR IN THE PREPARATION OF ARCHITECTURAL OR ENGINEERING PLANS. THE DESIGN PROFESSIONAL MUST RECOGNIZE THAT NO DESIGN DETAIL CAN SUBSTITUTE FOR EXPERIENCED ENGINEERING AND PROFESSIONAL JUDGEMENT.

TITLE:

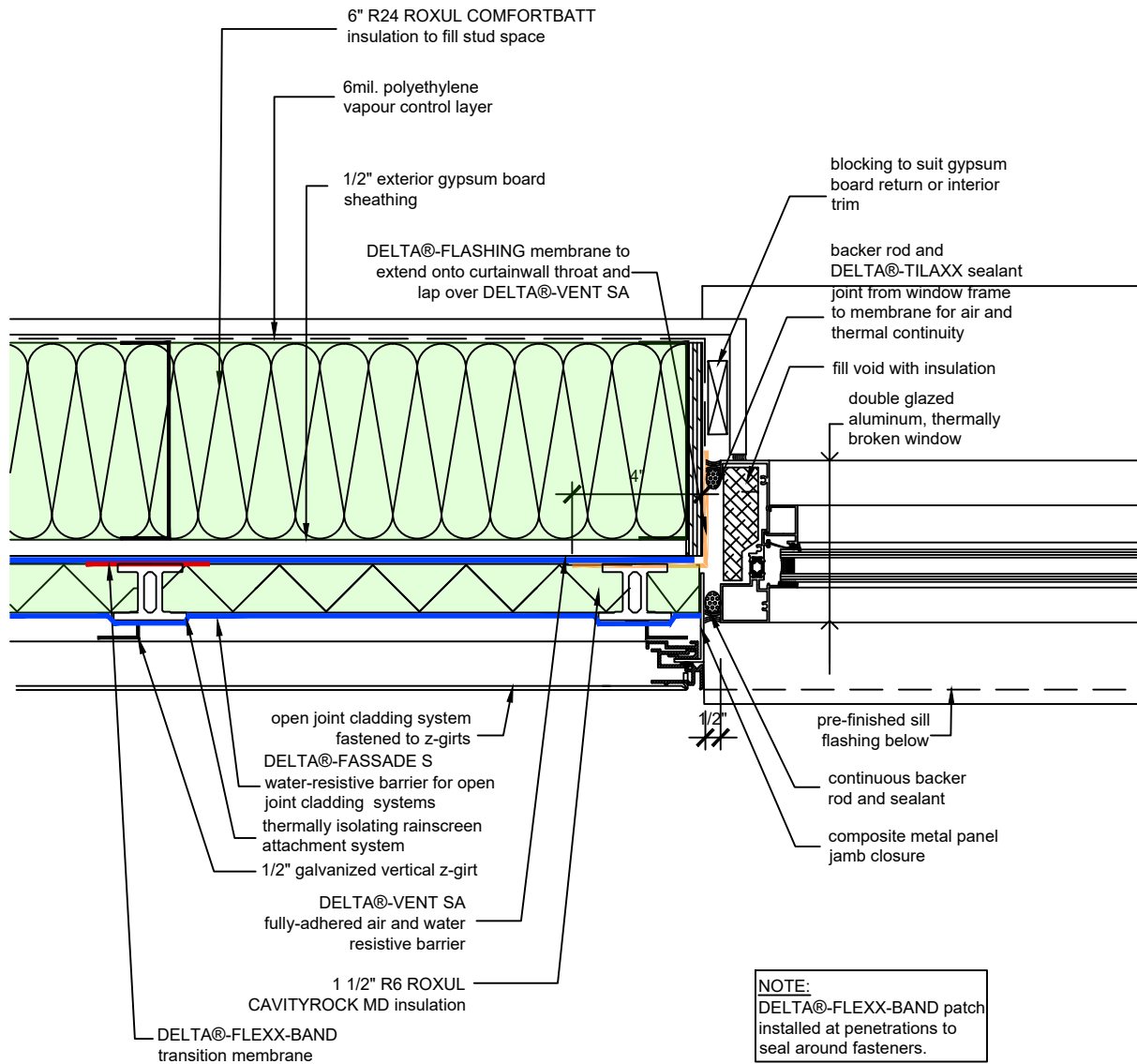
**WALL ASSEMBLY #7:  
OPEN JOINT CLADDING  
SYSTEM TYPICAL PUNCHED  
WINDOW HEAD**

DRAWN BY: DÖRKEN SYSTEMS INC.

**DÖRKEN**

**DELTA**

4655 DELTA WAY BEAMSVILLE, ON. L0R 1B4 CANADA  
1-888-433-5824 or 1-905-563-3255



SUBSTANTIAL EFFORT HAS BEEN MADE TO ENSURE THAT THE INFORMATION IN THIS DETAIL DRAWING IS ACCURATE. DÖRKEN SYSTEMS INC. CANNOT ACCEPT RESPONSIBILITY FOR ANY ERRORS OR OVERSIGHTS IN THE USE OF THIS MATERIAL OR IN THE PREPARATION OF ARCHITECTURAL OR ENGINEERING PLANS. THE DESIGN PROFESSIONAL MUST RECOGNIZE THAT NO DESIGN DETAIL CAN SUBSTITUTE FOR EXPERIENCED ENGINEERING AND PROFESSIONAL JUDGEMENT.

TITLE:

**WALL ASSEMBLY #7:  
OPEN JOINT CLADDING  
SYSTEM TYPICAL PUNCHED  
WINDOW JAMB**

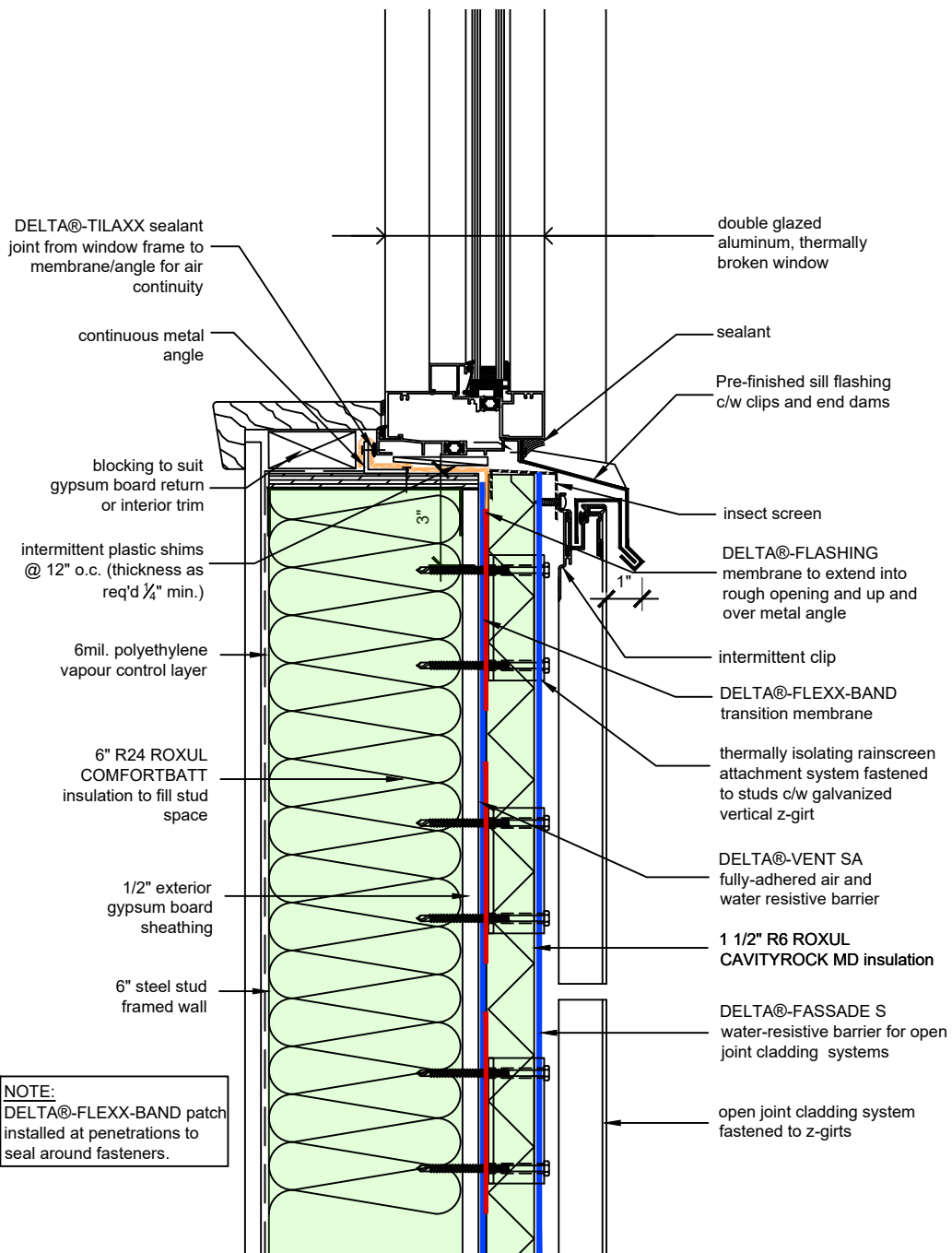
DRAWN BY: DÖRKEN SYSTEMS INC.

**DÖRKEN**

**DELTA®**

4655 DELTA WAY BEAMSVILLE, ON. L0R 1B4 CANADA  
1-888-433-5824 or 1-905-563-3255





SUBSTANTIAL EFFORT HAS BEEN MADE TO ENSURE THAT THE INFORMATION IN THIS DETAIL DRAWING IS ACCURATE. DÖRKEN SYSTEMS INC. CANNOT ACCEPT RESPONSIBILITY FOR ANY ERRORS OR OVERSIGHTS IN THE USE OF THIS MATERIAL OR IN THE PREPARATION OF ARCHITECTURAL OR ENGINEERING PLANS. THE DESIGN PROFESSIONAL MUST RECOGNIZE THAT NO DESIGN DETAIL CAN SUBSTITUTE FOR EXPERIENCED ENGINEERING AND PROFESSIONAL JUDGEMENT.

TITLE:

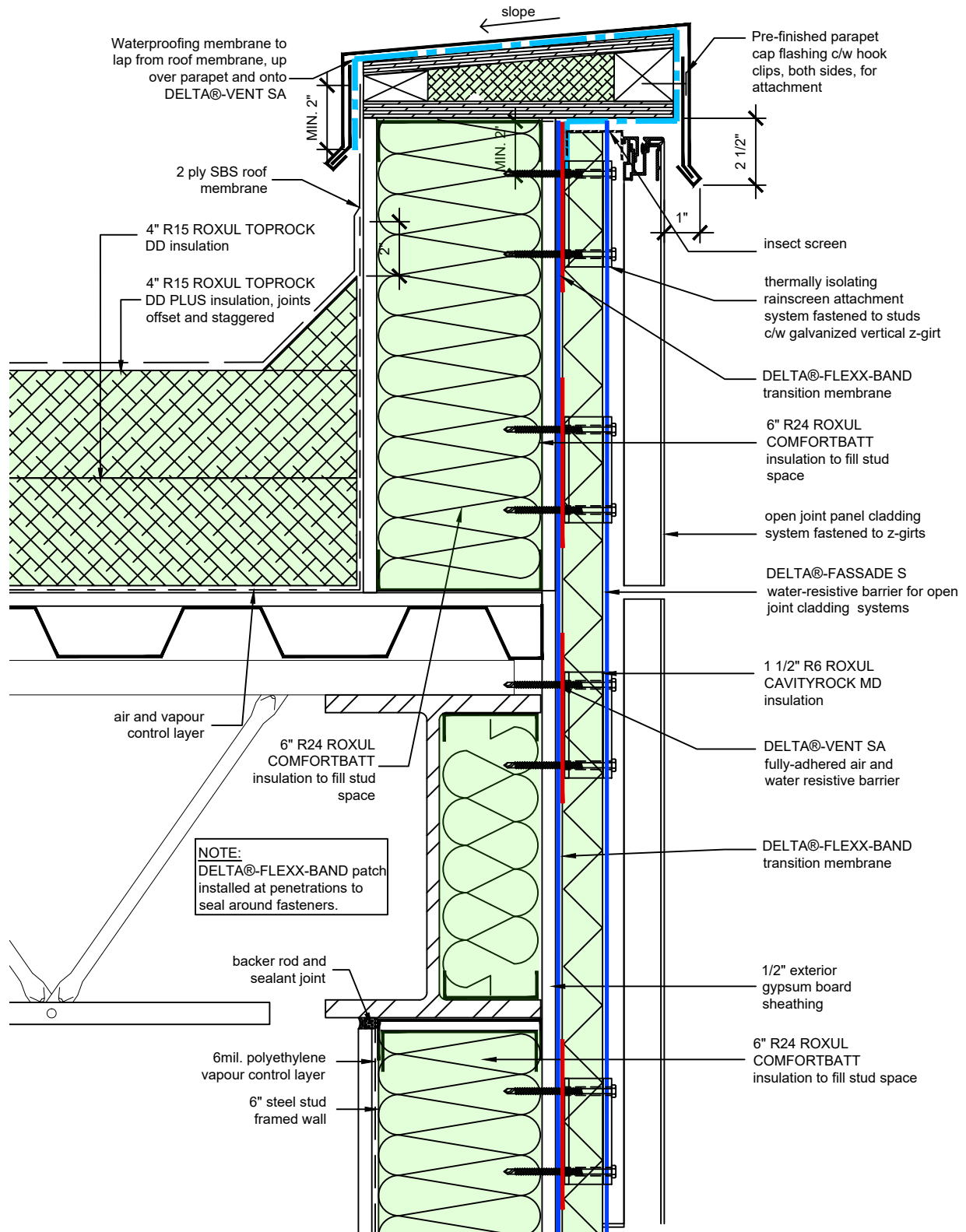
**WALL ASSEMBLY #7:  
OPEN JOINT CLADDING  
SYSTEM TYPICAL PUNCHED  
WINDOW SILL**

DRAWN BY: DÖRKEN SYSTEMS INC.

**DÖRKEN**

**DELTA**

4655 DELTA WAY BEAMSVILLE, ON. L0R 1B4 CANADA  
1-888-433-5824 or 1-905-563-3255



SUBSTANTIAL EFFORT HAS BEEN MADE TO ENSURE THAT THE INFORMATION IN THIS DETAIL DRAWING IS ACCURATE. DÖRKEN SYSTEMS INC. CANNOT ACCEPT RESPONSIBILITY FOR ANY ERRORS OR OVERSIGHTS IN THE USE OF THIS MATERIAL OR IN THE PREPARATION OF ARCHITECTURAL OR ENGINEERING PLANS. THE DESIGN PROFESSIONAL MUST RECOGNIZE THAT NO DESIGN DETAIL CAN SUBSTITUTE FOR EXPERIENCED ENGINEERING AND PROFESSIONAL JUDGEMENT.

TITLE:

**WALL ASSEMBLY #7:  
OPEN JOINT CLADDING  
SYSTEM TYPICAL PUNCHED  
WINDOW SILL**

DRAWN BY: DÖRKEN SYSTEMS INC.



4655 DELTA WAY BEAMSVILLE, ON. L0R 1B4 CANADA  
1-888-433-5824 or 1-905-563-3255