

SUBSTANTIAL EFFORT HAS BEEN MADE TO ENSURE THAT THE INFORMATION IN THIS DETAIL DRAWING IS ACCURATE. DÖRKEN SYSTEMS INC. AND RDH BUILDING SCIENCE LABORATORIES CANNOT ACCEPT RESPONSIBILITY FOR ANY ERRORS OR OVERSIGHTS IN THE USE OF THIS MATERIAL OR IN THE PREPARATION OF ARCHITECTURAL OR ENGINEERING PLANS. THE DESIGN PROFESSIONAL MUST RECOGNIZE THAT NO DESIGN DETAIL CAN SUBSTITUTE FOR EXPERIENCED ENGINEERING AND PROFESSIONAL JUDGEMENT.

TITLE:

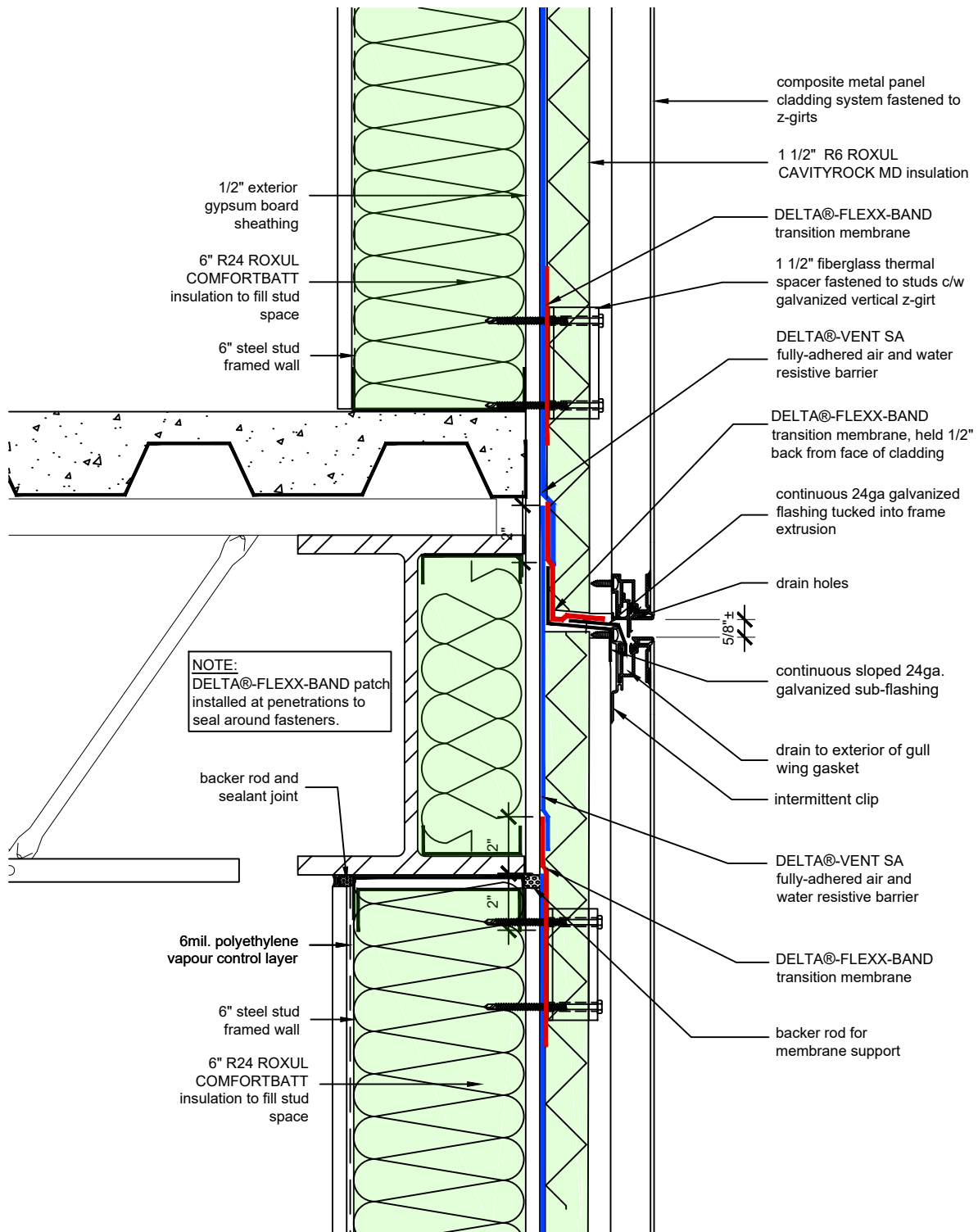
## WALL ASSEMBLY #1: TYPICAL BASE OF WALL AT FOUNDATION

DRAWN BY: DÖRKEN SYSTEMS INC., & RDH BUILDING SCIENCE LABORATORIES

**DÖRKEN**

**DELTA**

4655 DELTA WAY BEAMSVILLE, ON. L0R 1B4 CANADA  
1-888-433-5824 or 1-905-563-3255



NOTE:  
DELTA@-FLEXX-BAND patch  
installed at penetrations to  
seal around fasteners.

SUBSTANTIAL EFFORT HAS BEEN MADE TO ENSURE THAT THE INFORMATION IN THIS DETAIL DRAWING IS ACCURATE. DÖRKEN SYSTEMS INC. AND RDH BUILDING SCIENCE LABORATORIES CANNOT ACCEPT RESPONSIBILITY FOR ANY ERRORS OR OVERSIGHTS IN THE USE OF THIS MATERIAL OR IN THE PREPARATION OF ARCHITECTURAL OR ENGINEERING PLANS. THE DESIGN PROFESSIONAL MUST RECOGNIZE THAT NO DESIGN DETAIL CAN SUBSTITUTE FOR EXPERIENCED ENGINEERING AND PROFESSIONAL JUDGEMENT.

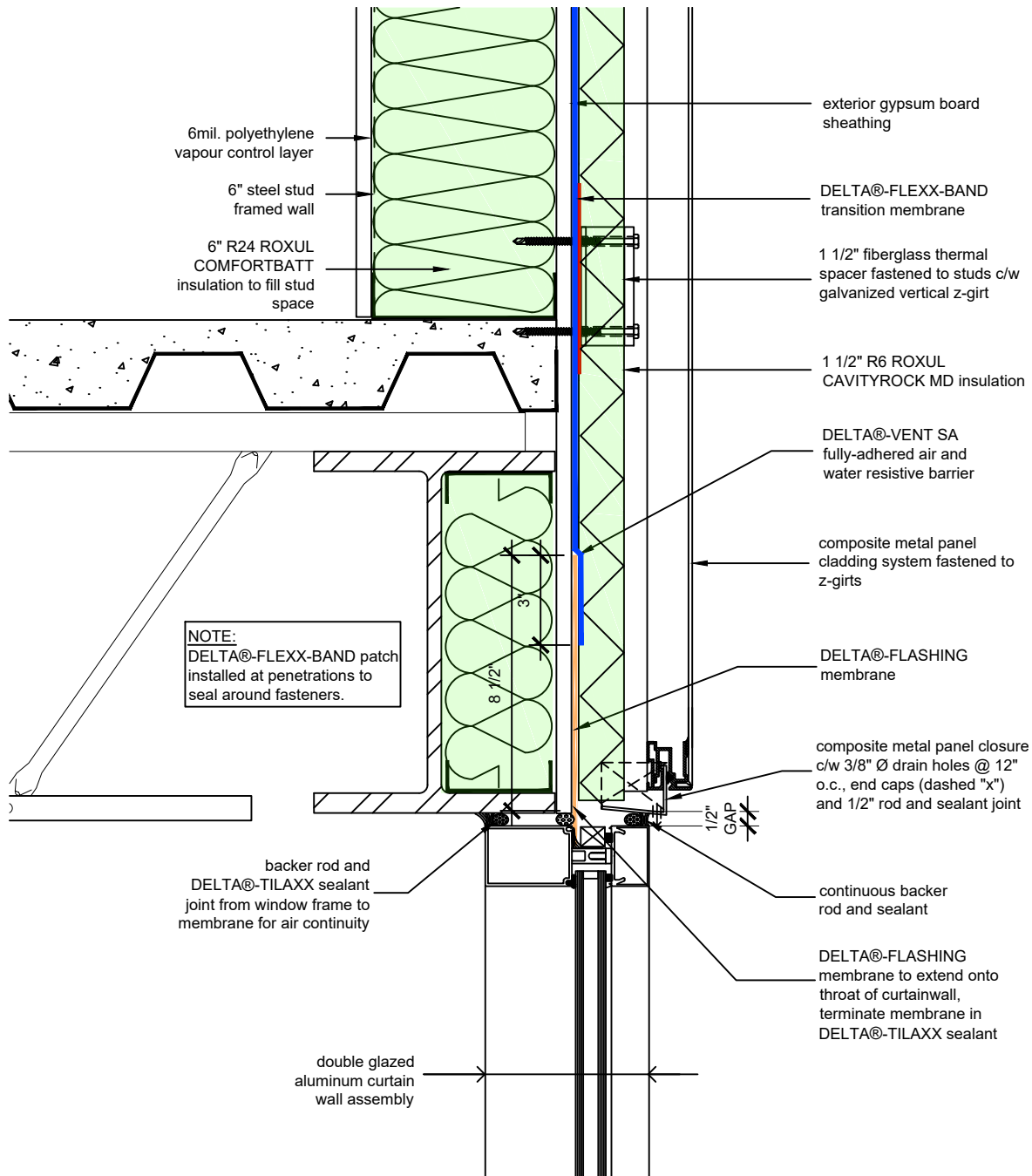
TITLE:  
**WALL ASSEMBLY #1:  
TYPICAL CLADDING  
ATTACHMENT AT FLOOR**

DRAWN BY: DÖRKEN SYSTEMS INC., & RDH BUILDING SCIENCE LABORATORIES

**DÖRKEN**

**DELTA**

4655 DELTA WAY BEAMSVILLE, ON. L0R 1B4 CANADA  
1-888-433-5824 or 1-905-563-3255



SUBSTANTIAL EFFORT HAS BEEN MADE TO ENSURE THAT THE INFORMATION IN THIS DETAIL DRAWING IS ACCURATE. DÖRKEN SYSTEMS INC. AND RDH BUILDING SCIENCE LABORATORIES CANNOT ACCEPT RESPONSIBILITY FOR ANY ERRORS OR OVERSIGHTS IN THE USE OF THIS MATERIAL OR IN THE PREPARATION OF ARCHITECTURAL OR ENGINEERING PLANS. THE DESIGN PROFESSIONAL MUST RECOGNIZE THAT NO DESIGN DETAIL CAN SUBSTITUTE FOR EXPERIENCED ENGINEERING AND PROFESSIONAL JUDGEMENT.

TITLE:

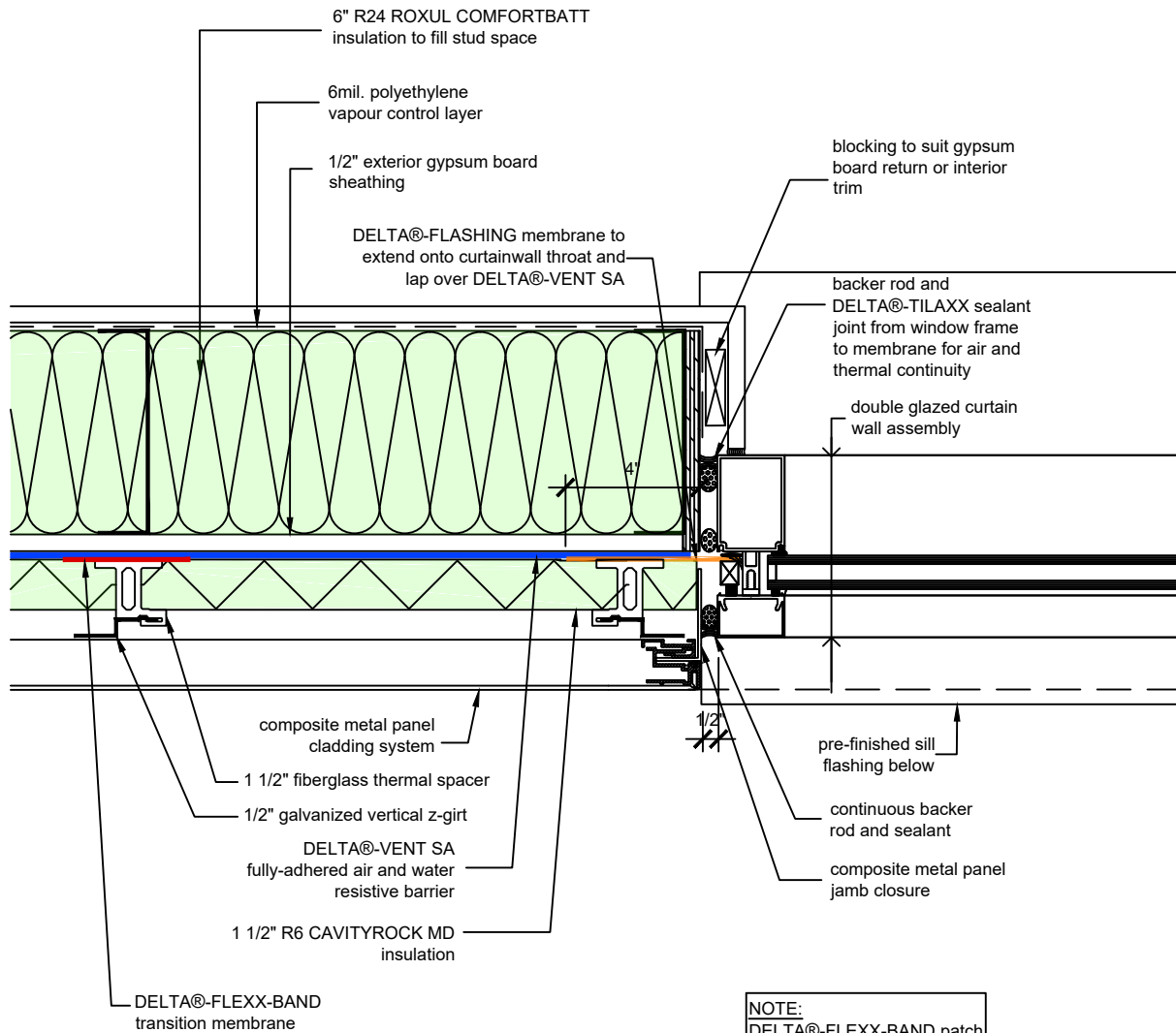
## WALL ASSEMBLY #1: TYPICAL CURTAIN WALL HEAD

DRAWN BY: DÖRKEN SYSTEMS INC., & RDH BUILDING SCIENCE LABORATORIES

**DÖRKEN**

**DELTA**

4655 DELTA WAY BEAMSVILLE, ON. L0R 1B4 CANADA  
1-888-433-5824 or 1-905-563-3255



**NOTE:**  
 DELTA@-FLEXX-BAND patch installed at penetrations to seal around fasteners.

SUBSTANTIAL EFFORT HAS BEEN MADE TO ENSURE THAT THE INFORMATION IN THIS DETAIL DRAWING IS ACCURATE. DÖRKEN SYSTEMS INC. AND RDH BUILDING SCIENCE LABORATORIES CANNOT ACCEPT RESPONSIBILITY FOR ANY ERRORS OR OVERSIGHTS IN THE USE OF THIS MATERIAL OR IN THE PREPARATION OF ARCHITECTURAL OR ENGINEERING PLANS. THE DESIGN PROFESSIONAL MUST RECOGNIZE THAT NO DESIGN DETAIL CAN SUBSTITUTE FOR EXPERIENCED ENGINEERING AND PROFESSIONAL JUDGEMENT.

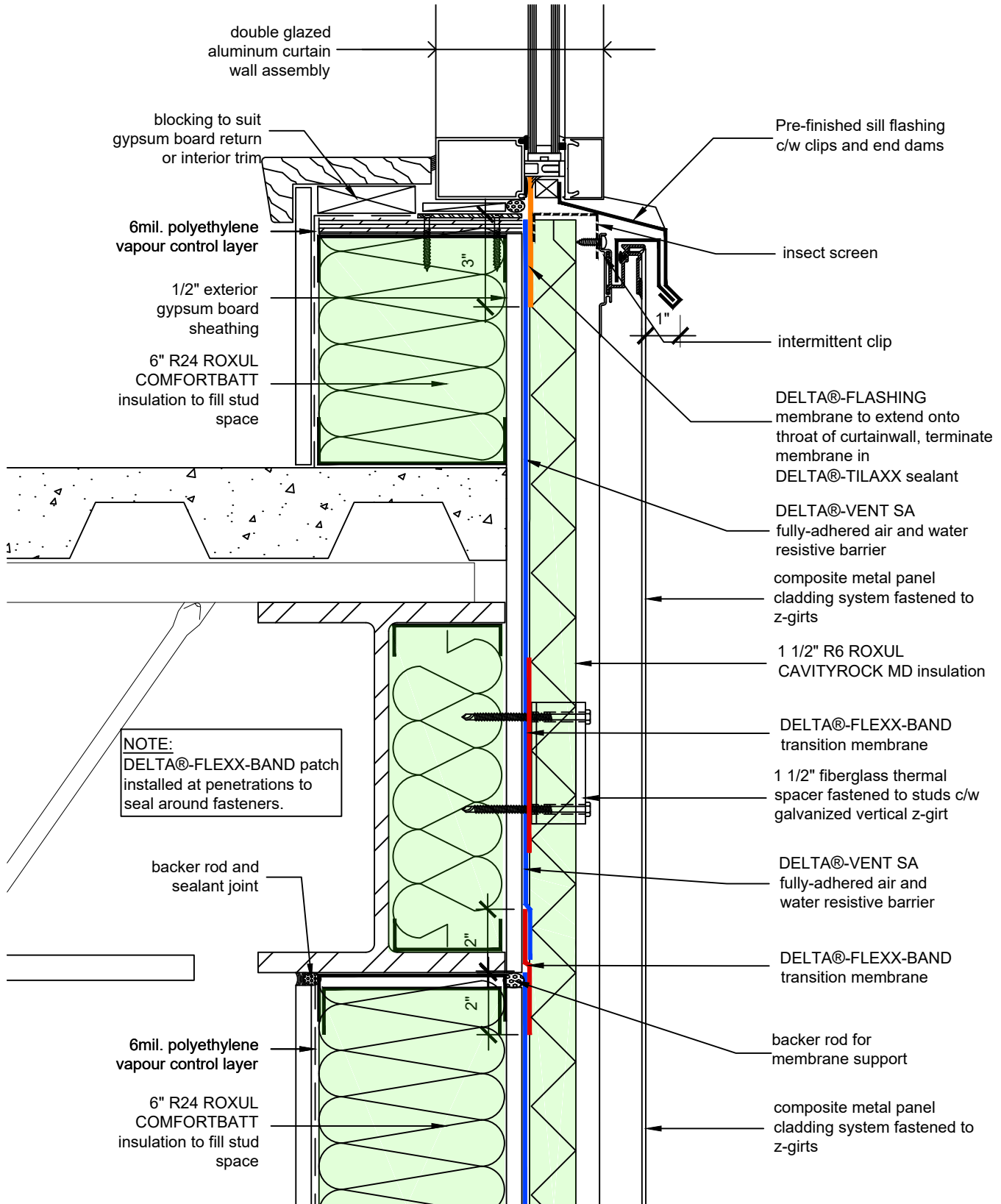
TITLE:  
**WALL ASSEMBLY #1:  
 TYPICAL CURTAIN WALL  
 JAMB**

DRAWN BY: DÖRKEN SYSTEMS INC., & RDH BUILDING SCIENCE LABORATORIES

**DÖRKEN**

**DELTA®**

4655 DELTA WAY BEAMSVILLE, ON. L0R 1B4 CANADA  
 1-888-433-5824 or 1-905-563-3255



**NOTE:**  
 DELTA®-FLEXX-BAND patch installed at penetrations to seal around fasteners.

SUBSTANTIAL EFFORT HAS BEEN MADE TO ENSURE THAT THE INFORMATION IN THIS DETAIL DRAWING IS ACCURATE. DÖRKEN AND RDH BUILDING SCIENCE CONSULTING INC. CANNOT ACCEPT RESPONSIBILITY FOR ANY ERRORS OR OVERSIGHTS IN THE USE OF THIS MATERIAL OR IN THE PREPARATION OF ARCHITECTURAL OR ENGINEERING PLANS. THE DESIGN PROFESSIONAL MUST RECOGNIZE THAT NO DESIGN DETAIL CAN SUBSTITUTE FOR EXPERIENCED ENGINEERING AND PROFESSIONAL JUDGEMENT.

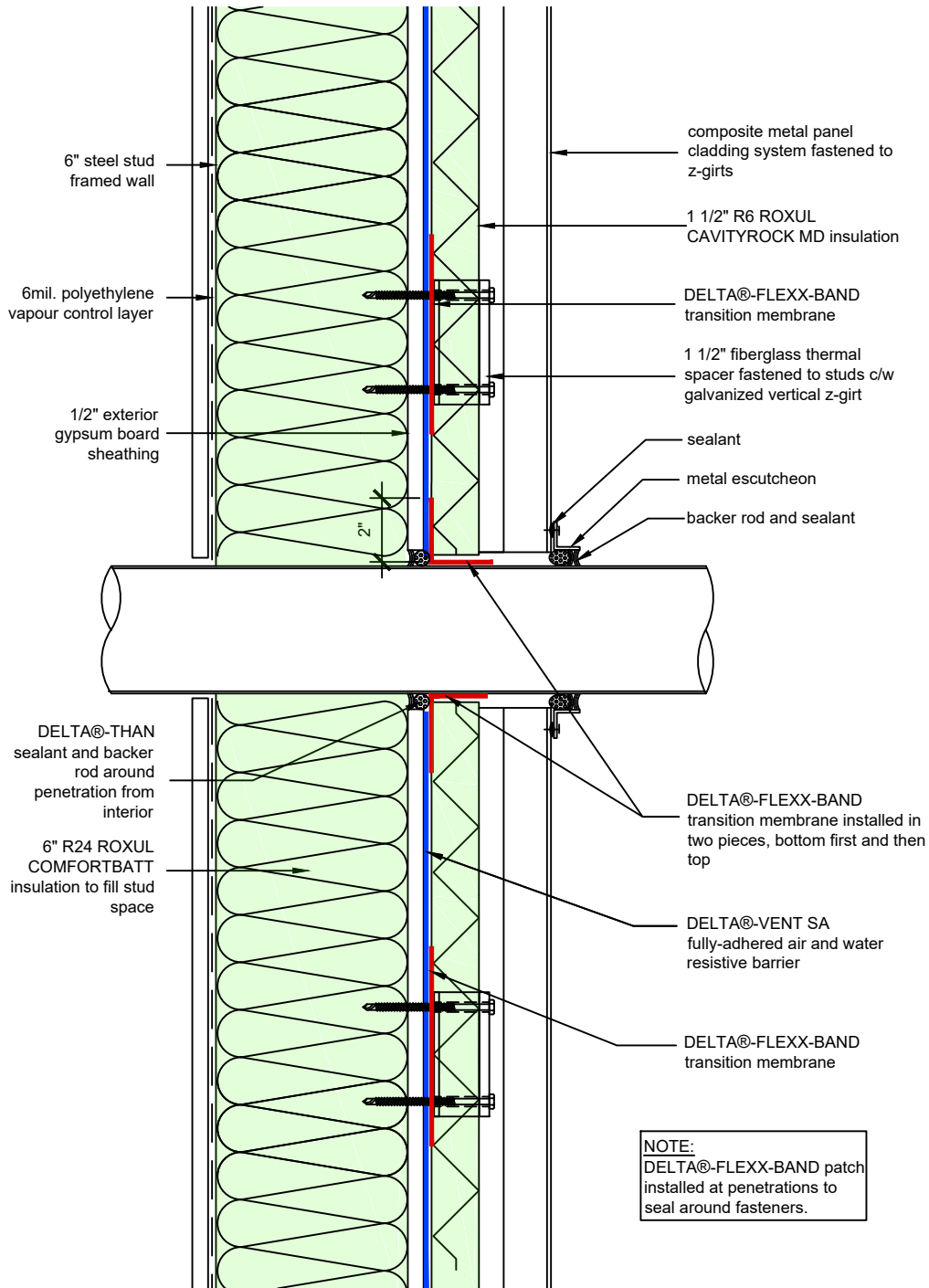
TITLE:  
**WALL ASSEMBLY #1:  
 TYPICAL CURTAIN WALL  
 SILL**

DRAWN BY: DÖRKEN SYSTEMS INC. & RDH BUILDING SCIENCE CONSULTING INC.

**DÖRKEN**

**DELTA®**

4655 DELTA WAY BEAMSVILLE, ON. L0R 1B4 CANADA  
 1-888-433-5824 or 1-905-563-3255



SUBSTANTIAL EFFORT HAS BEEN MADE TO ENSURE THAT THE INFORMATION IN THIS DETAIL DRAWING IS ACCURATE. DÖRKEN SYSTEMS INC. AND RDH BUILDING SCIENCE LABORATORIES CANNOT ACCEPT RESPONSIBILITY FOR ANY ERRORS OR OVERSIGHTS IN THE USE OF THIS MATERIAL OR IN THE PREPARATION OF ARCHITECTURAL OR ENGINEERING PLANS. THE DESIGN PROFESSIONAL MUST RECOGNIZE THAT NO DESIGN DETAIL CAN SUBSTITUTE FOR EXPERIENCED ENGINEERING AND PROFESSIONAL JUDGEMENT.

TITLE:

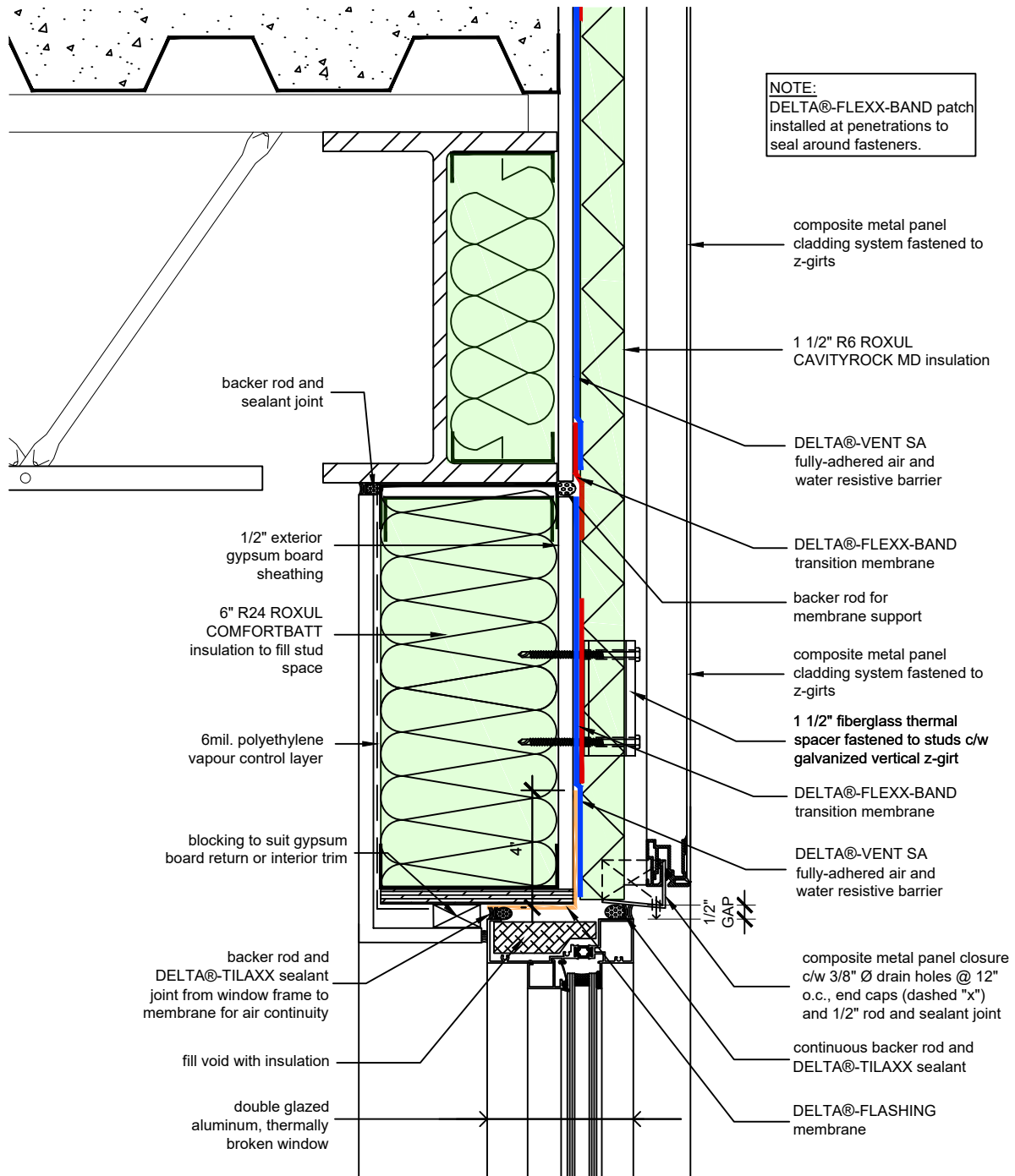
## WALL ASSEMBLY #1: TYPICAL PENETRATION

DRAWN BY: DÖRKEN SYSTEMS INC., & RDH BUILDING SCIENCE LABORATORIES

**DÖRKEN**

**DELTA**

4655 DELTA WAY BEAMSVILLE, ON. L0R 1B4 CANADA  
1-888-433-5824 or 1-905-563-3255



SUBSTANTIAL EFFORT HAS BEEN MADE TO ENSURE THAT THE INFORMATION IN THIS DETAIL DRAWING IS ACCURATE. DÖRKEN SYSTEMS INC. AND RDH BUILDING SCIENCE LABORATORIES CANNOT ACCEPT RESPONSIBILITY FOR ANY ERRORS OR OVERSIGHTS IN THE USE OF THIS MATERIAL OR IN THE PREPARATION OF ARCHITECTURAL OR ENGINEERING PLANS. THE DESIGN PROFESSIONAL MUST RECOGNIZE THAT NO DESIGN DETAIL CAN SUBSTITUTE FOR EXPERIENCED ENGINEERING AND PROFESSIONAL JUDGEMENT.

TITLE:

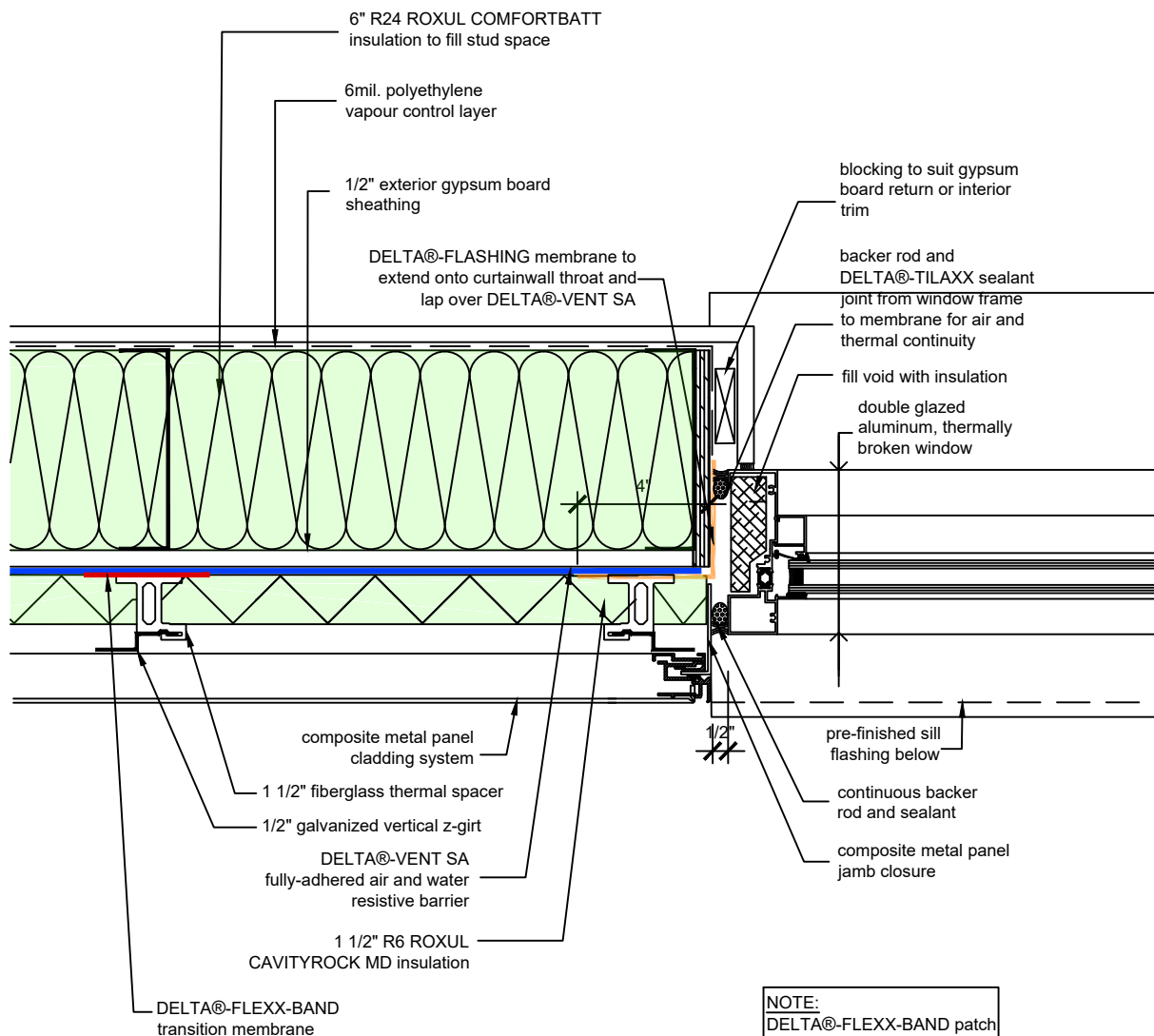
## WALL ASSEMBLY #1: TYPICAL PUNCHED WINDOW HEAD

DRAWN BY: DÖRKEN SYSTEMS INC., & RDH BUILDING SCIENCE LABORATORIES

**DÖRKEN**

**DELTA**

4655 DELTA WAY BEAMSVILLE, ON. L0R 1B4 CANADA  
1-888-433-5824 or 1-905-563-3255



**NOTE:**  
 DELTA®-FLEXX-BAND patch installed at penetrations to seal around fasteners.

SUBSTANTIAL EFFORT HAS BEEN MADE TO ENSURE THAT THE INFORMATION IN THIS DETAIL DRAWING IS ACCURATE. DÖRKEN SYSTEMS INC. AND RDH BUILDING SCIENCE LABORATORIES CANNOT ACCEPT RESPONSIBILITY FOR ANY ERRORS OR OVERSIGHTS IN THE USE OF THIS MATERIAL OR IN THE PREPARATION OF ARCHITECTURAL OR ENGINEERING PLANS. THE DESIGN PROFESSIONAL MUST RECOGNIZE THAT NO DESIGN DETAIL CAN SUBSTITUTE FOR EXPERIENCED ENGINEERING AND PROFESSIONAL JUDGEMENT.

TITLE:  
**WALL ASSEMBLY #1:  
 TYPICAL PUNCHED  
 WINDOW JAMB**

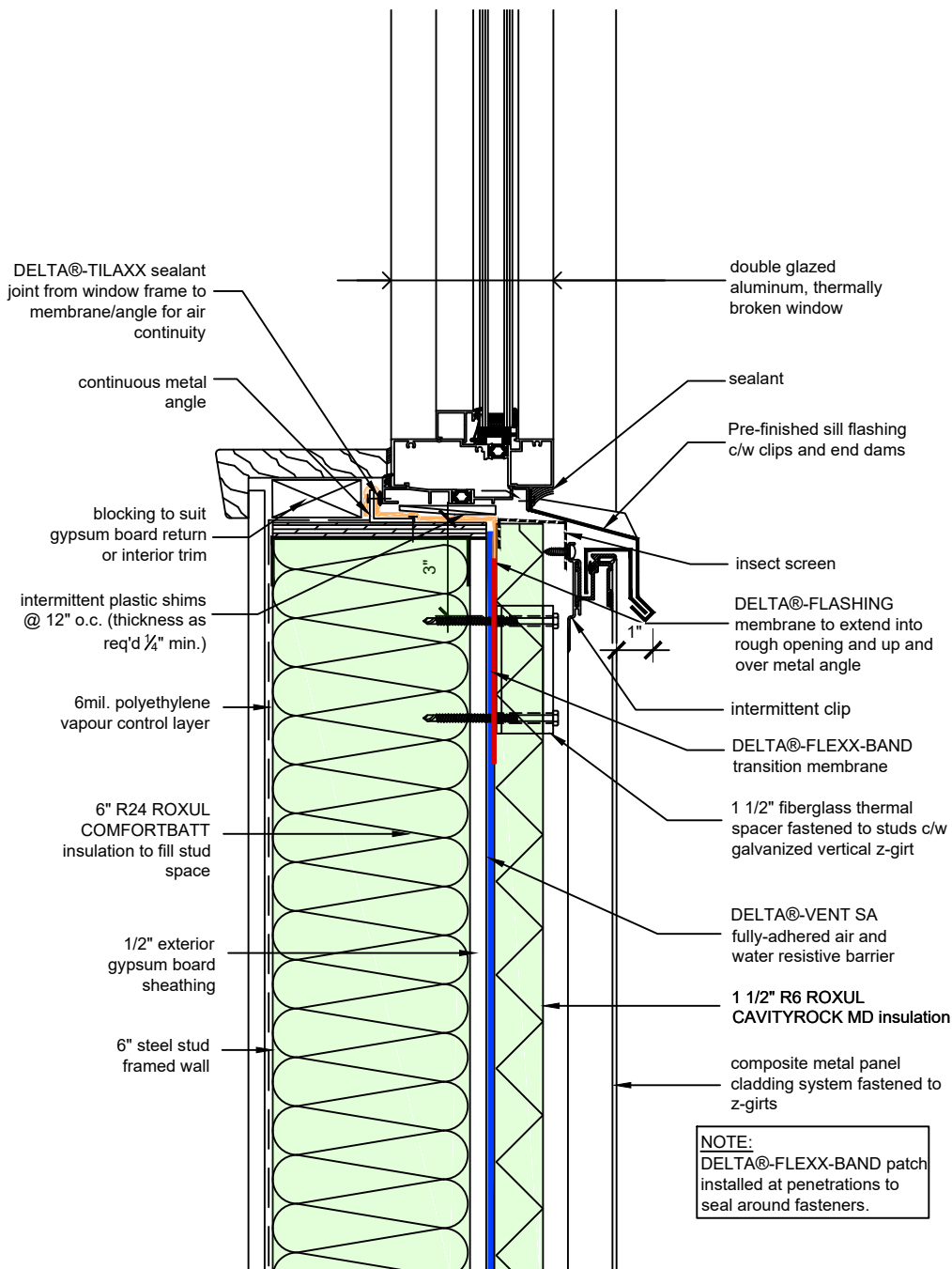
DRAWN BY: DÖRKEN SYSTEMS INC., & RDH BUILDING SCIENCE LABORATORIES

**DÖRKEN**

**DELTA®**

4655 DELTA WAY BEAMSVILLE, ON. L0R 1B4 CANADA  
 1-888-433-5824 or 1-905-563-3255





SUBSTANTIAL EFFORT HAS BEEN MADE TO ENSURE THAT THE INFORMATION IN THIS DETAIL DRAWING IS ACCURATE. DÖRKEN SYSTEMS INC. AND RDH BUILDING SCIENCE LABORATORIES CANNOT ACCEPT RESPONSIBILITY FOR ANY ERRORS OR OVERSIGHTS IN THE USE OF THIS MATERIAL OR IN THE PREPARATION OF ARCHITECTURAL OR ENGINEERING PLANS. THE DESIGN PROFESSIONAL MUST RECOGNIZE THAT NO DESIGN DETAIL CAN SUBSTITUTE FOR EXPERIENCED ENGINEERING AND PROFESSIONAL JUDGEMENT.

TITLE:

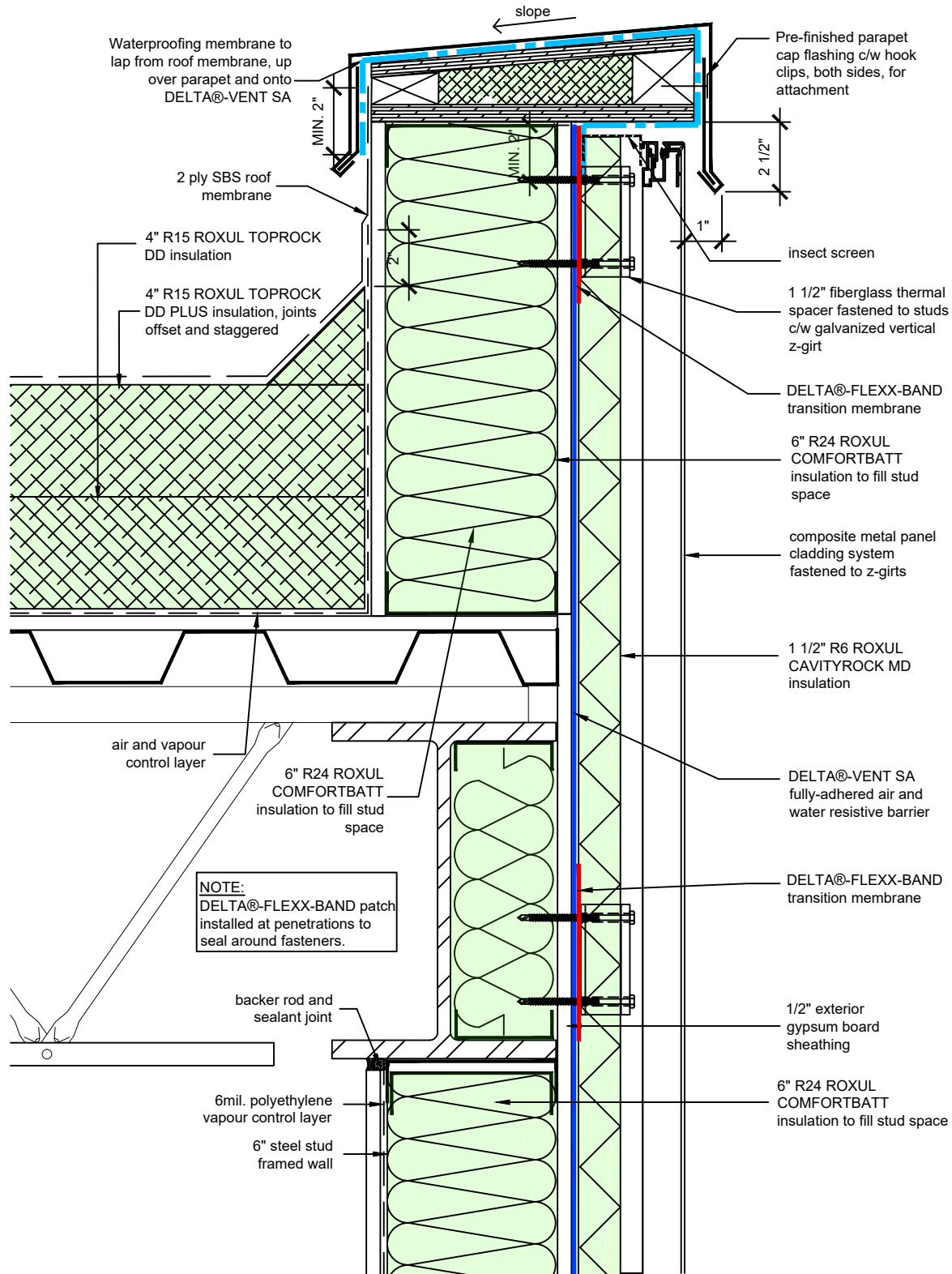
## WALL ASSEMBLY #1: TYPICAL PUNCHED WINDOW SILL

DRAWN BY: DÖRKEN SYSTEMS INC., & RDH BUILDING SCIENCE LABORATORIES

**DÖRKEN**

**DELTA**

4655 DELTA WAY BEAMSVILLE, ON. L0R 1B4 CANADA  
1-888-433-5824 or 1-905-563-3255



SUBSTANTIAL EFFORT HAS BEEN MADE TO ENSURE THAT THE INFORMATION IN THIS DETAIL DRAWING IS ACCURATE. DÖRKEN SYSTEMS INC. AND RDH BUILDING SCIENCE LABORATORIES CANNOT ACCEPT RESPONSIBILITY FOR ANY ERRORS OR OVERSIGHTS IN THE USE OF THIS MATERIAL OR IN THE PREPARATION OF ARCHITECTURAL OR ENGINEERING PLANS. THE DESIGN PROFESSIONAL MUST RECOGNIZE THAT NO DESIGN DETAIL CAN SUBSTITUTE FOR EXPERIENCED ENGINEERING AND PROFESSIONAL JUDGEMENT.

TITLE:

## WALL ASSEMBLY #1: TYPICAL ROOF TO WALL SECTION

DRAWN BY: DÖRKEN SYSTEMS INC., & RDH BUILDING SCIENCE LABORATORIES

**DÖRKEN**

**DELTA**

4655 DELTA WAY BEAMSVILLE, ON. L0R 1B4 CANADA  
1-888-433-5824 or 1-905-563-3255