

NOTE:
 DELTA®-FLEX-BAND patch
 installed at penetrations to
 seal around fasteners.

SUBSTANTIAL EFFORT HAS BEEN MADE TO ENSURE THAT THE INFORMATION IN THIS DETAIL DRAWING IS ACCURATE. DÖRKEN SYSTEMS INC. RDH BUILDING SCIENCE LABORATORIES CANNOT ACCEPT RESPONSIBILITY FOR ANY ERRORS OR OVERSIGHTS IN THE USE OF THIS MATERIAL OR IN THE PREPARATION OF ARCHITECTURAL OR ENGINEERING PLANS. THE DESIGN PROFESSIONAL MUST RECOGNIZE THAT NO DESIGN DETAIL CAN SUBSTITUTE FOR EXPERIENCED ENGINEERING AND PROFESSIONAL JUDGEMENT.

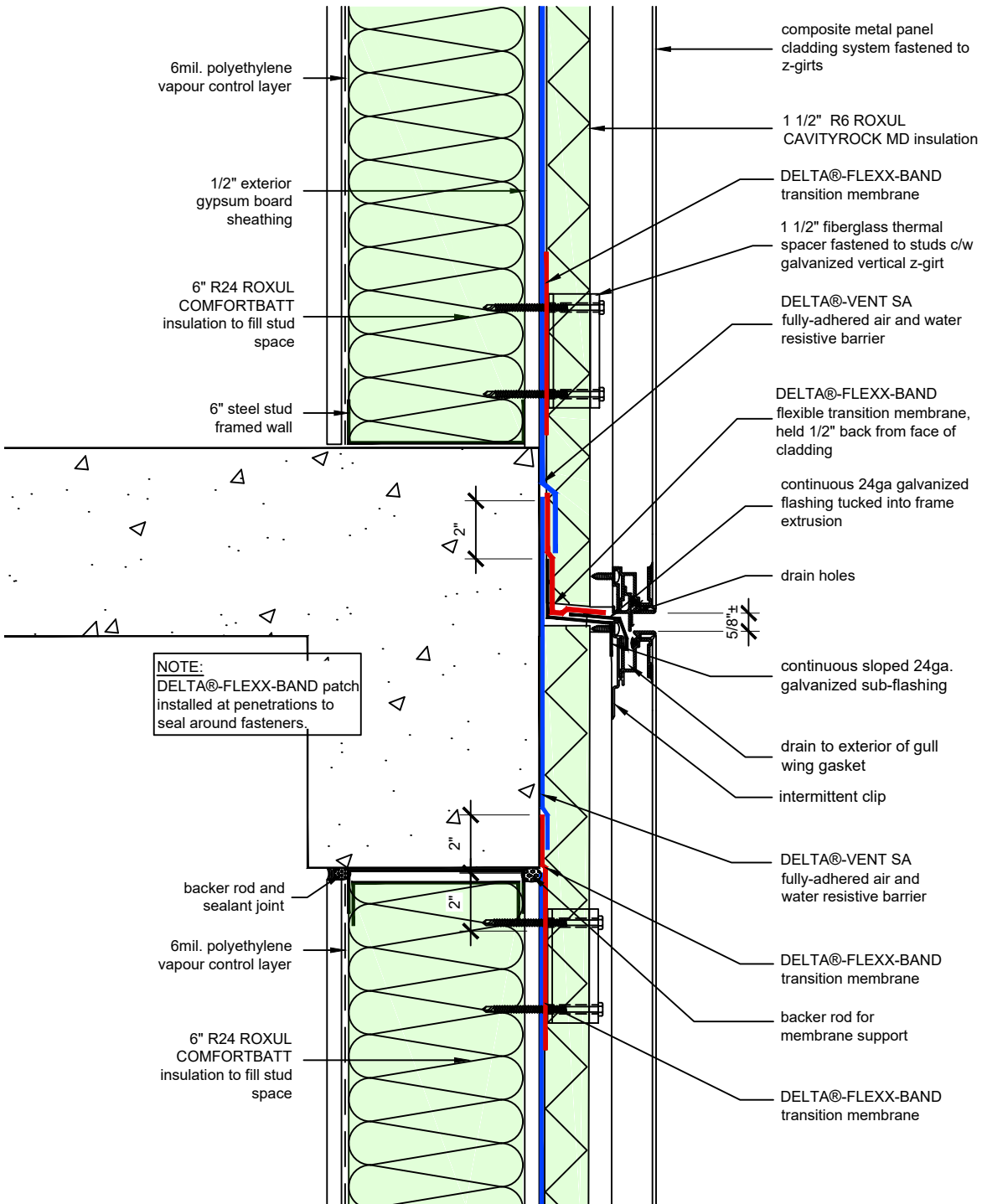
TITLE:

**WALL ASSEMBLY #4:
 TYPICAL BASE OF WALL
 AT FOUNDATION**

DRAWN BY: DÖRKEN SYSTEMS INC. & RDH BUILDING SCIENCE LABORATORIES



4655 DELTA WAY BEAMSVILLE, ON. L0R 1B4 CANADA
 1-888-433-5824 or 1-905-563-3255



SUBSTANTIAL EFFORT HAS BEEN MADE TO ENSURE THAT THE INFORMATION IN THIS DETAIL DRAWING IS ACCURATE. DÖRKEN SYSTEMS INC. RDH BUILDING SCIENCE LABORATORIES CANNOT ACCEPT RESPONSIBILITY FOR ANY ERRORS OR OVERSIGHTS IN THE USE OF THIS MATERIAL OR IN THE PREPARATION OF ARCHITECTURAL OR ENGINEERING PLANS. THE DESIGN PROFESSIONAL MUST RECOGNIZE THAT NO DESIGN DETAIL CAN SUBSTITUTE FOR EXPERIENCED ENGINEERING AND PROFESSIONAL JUDGEMENT.

TITLE:

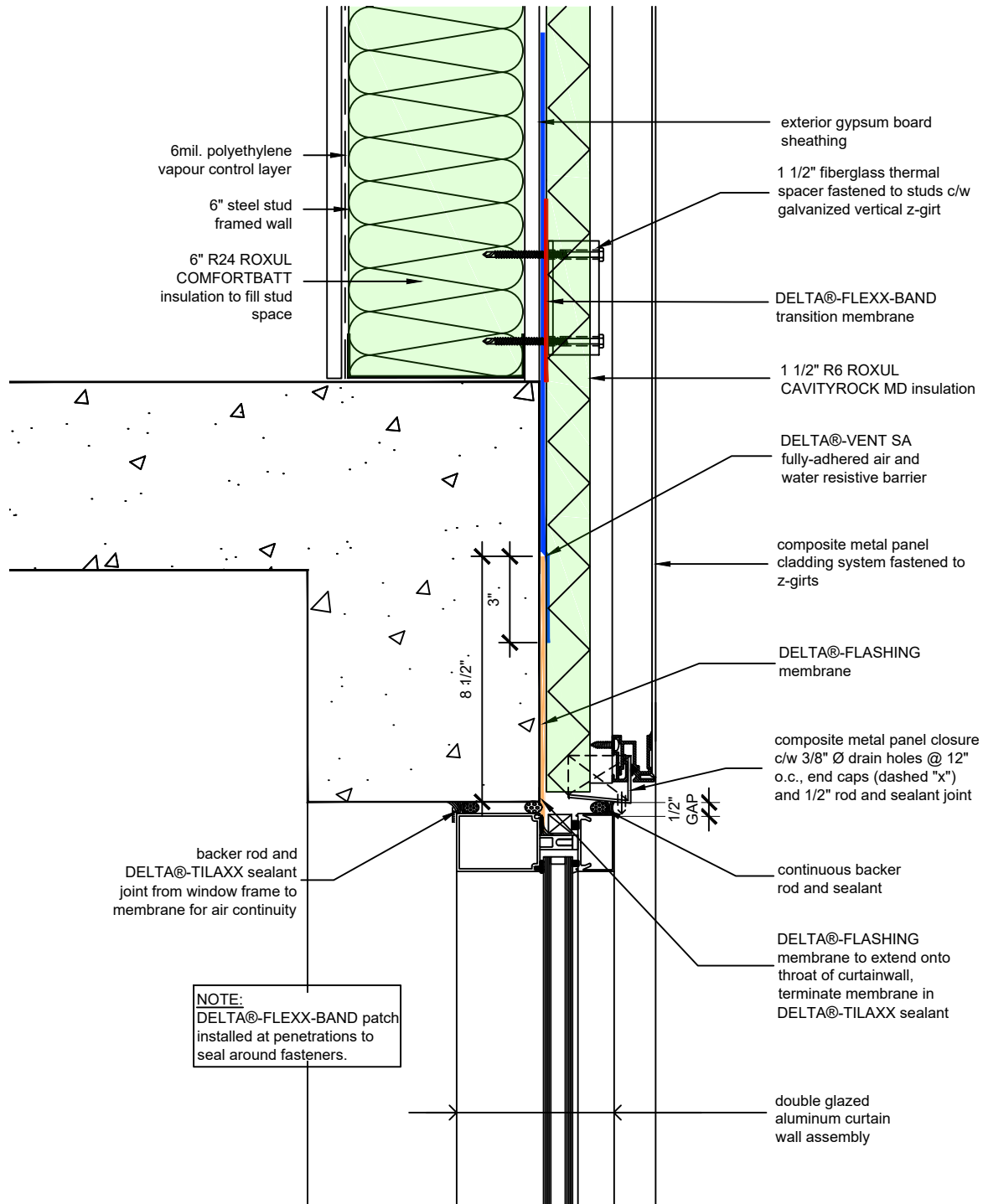
**WALL ASSEMBLY #4:
TYPICAL CLADDING
ATTACHMENT AT FLOOR
LEVEL**

DRAWN BY: DÖRKEN SYSTEMS INC. & RDH BUILDING SCIENCE LABORATORIES

DÖRKEN

DELTA

4655 DELTA WAY BEAMSVILLE, ON. L0R 1B4 CANADA
1-888-433-5824 or 1-905-563-3255



NOTE:
 DELTA®-FLEXX-BAND patch installed at penetrations to seal around fasteners.

SUBSTANTIAL EFFORT HAS BEEN MADE TO ENSURE THAT THE INFORMATION IN THIS DETAIL DRAWING IS ACCURATE. DÖRKEN SYSTEMS INC. RDH BUILDING SCIENCE LABORATORIES CANNOT ACCEPT RESPONSIBILITY FOR ANY ERRORS OR OVERSIGHTS IN THE USE OF THIS MATERIAL OR IN THE PREPARATION OF ARCHITECTURAL OR ENGINEERING PLANS. THE DESIGN PROFESSIONAL MUST RECOGNIZE THAT NO DESIGN DETAIL CAN SUBSTITUTE FOR EXPERIENCED ENGINEERING AND PROFESSIONAL JUDGEMENT.

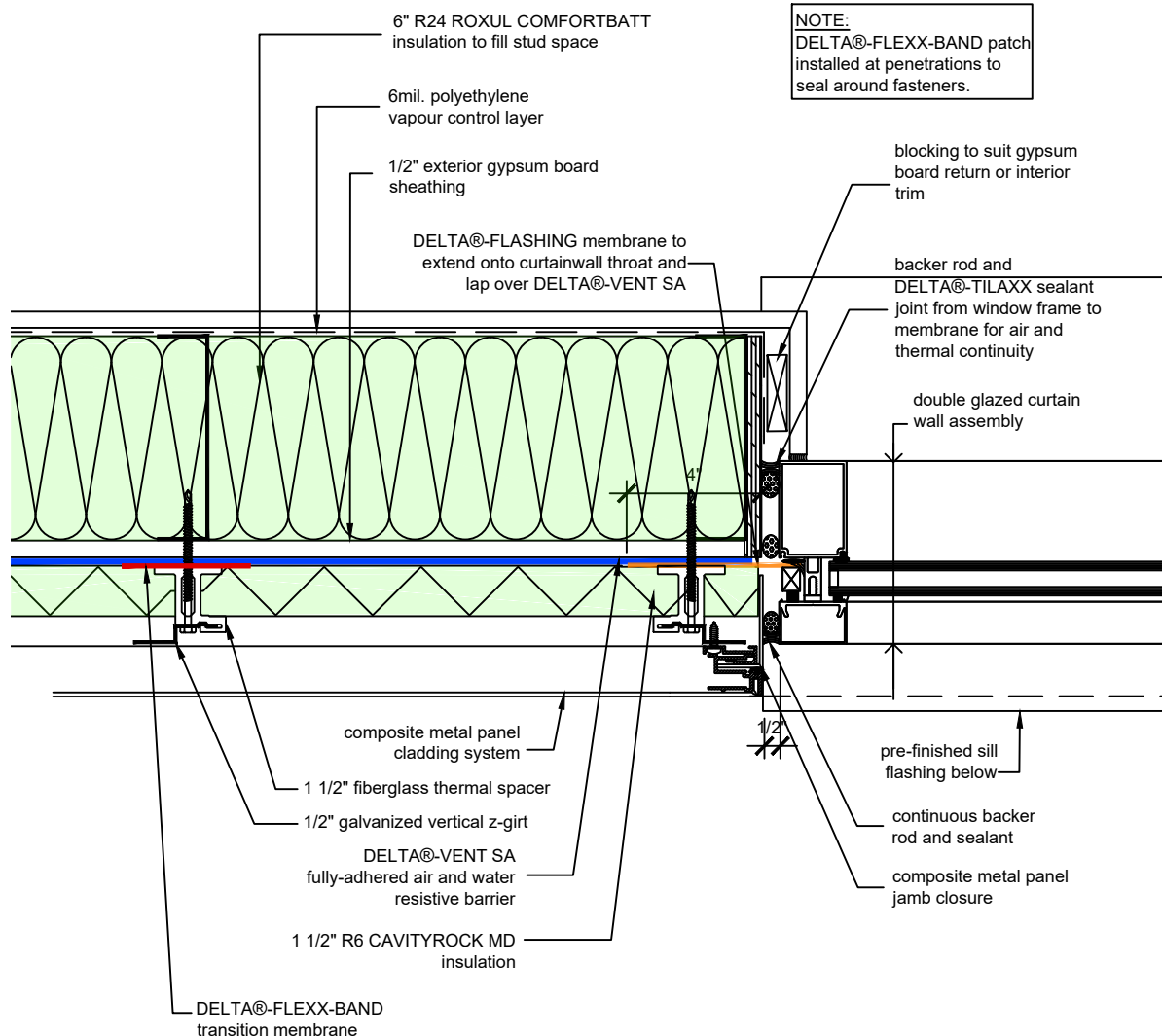
TITLE:

**WALL ASSEMBLY #4:
 TYPICAL CURTAIN WALL
 HEAD**

DRAWN BY: DÖRKEN SYSTEMS INC. & RDH BUILDING SCIENCE LABORATORIES



4655 DELTA WAY BEAMSVILLE, ON. L0R 1B4 CANADA
 1-888-433-5824 or 1-905-563-3255



SUBSTANTIAL EFFORT HAS BEEN MADE TO ENSURE THAT THE INFORMATION IN THIS DETAIL DRAWING IS ACCURATE. DÖRKEN SYSTEMS INC. RDH BUILDING SCIENCE LABORATORIES CANNOT ACCEPT RESPONSIBILITY FOR ANY ERRORS OR OVERSIGHTS IN THE USE OF THIS MATERIAL OR IN THE PREPARATION OF ARCHITECTURAL OR ENGINEERING PLANS. THE DESIGN PROFESSIONAL MUST RECOGNIZE THAT NO DESIGN DETAIL CAN SUBSTITUTE FOR EXPERIENCED ENGINEERING AND PROFESSIONAL JUDGEMENT.

TITLE:

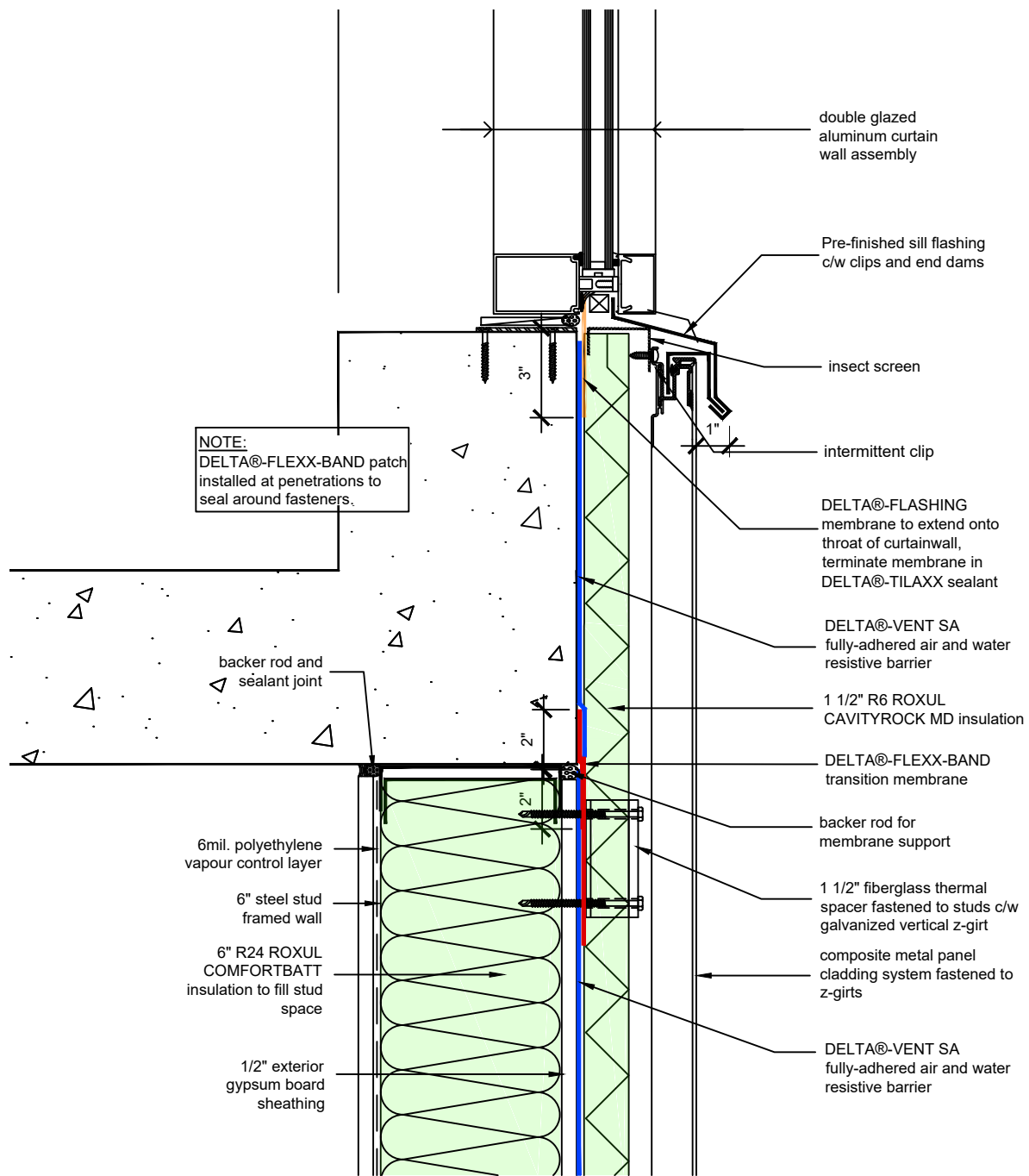
**WALL ASSEMBLY #4:
TYPICAL CURTAIN WALL
JAMB**

DRAWN BY: DÖRKEN SYSTEMS INC. & RDH BUILDING SCIENCE LABORATORIES

DÖRKEN



4655 DELTA WAY BEAMSVILLE, ON. L0R 1B4 CANADA
1-888-433-5824 or 1-905-563-3255



SUBSTANTIAL EFFORT HAS BEEN MADE TO ENSURE THAT THE INFORMATION IN THIS DETAIL DRAWING IS ACCURATE. DÖRKEN SYSTEMS INC. RDH BUILDING SCIENCE LABORATORIES CANNOT ACCEPT RESPONSIBILITY FOR ANY ERRORS OR OVERSIGHTS IN THE USE OF THIS MATERIAL OR IN THE PREPARATION OF ARCHITECTURAL OR ENGINEERING PLANS. THE DESIGN PROFESSIONAL MUST RECOGNIZE THAT NO DESIGN DETAIL CAN SUBSTITUTE FOR EXPERIENCED ENGINEERING AND PROFESSIONAL JUDGEMENT.

TITLE:

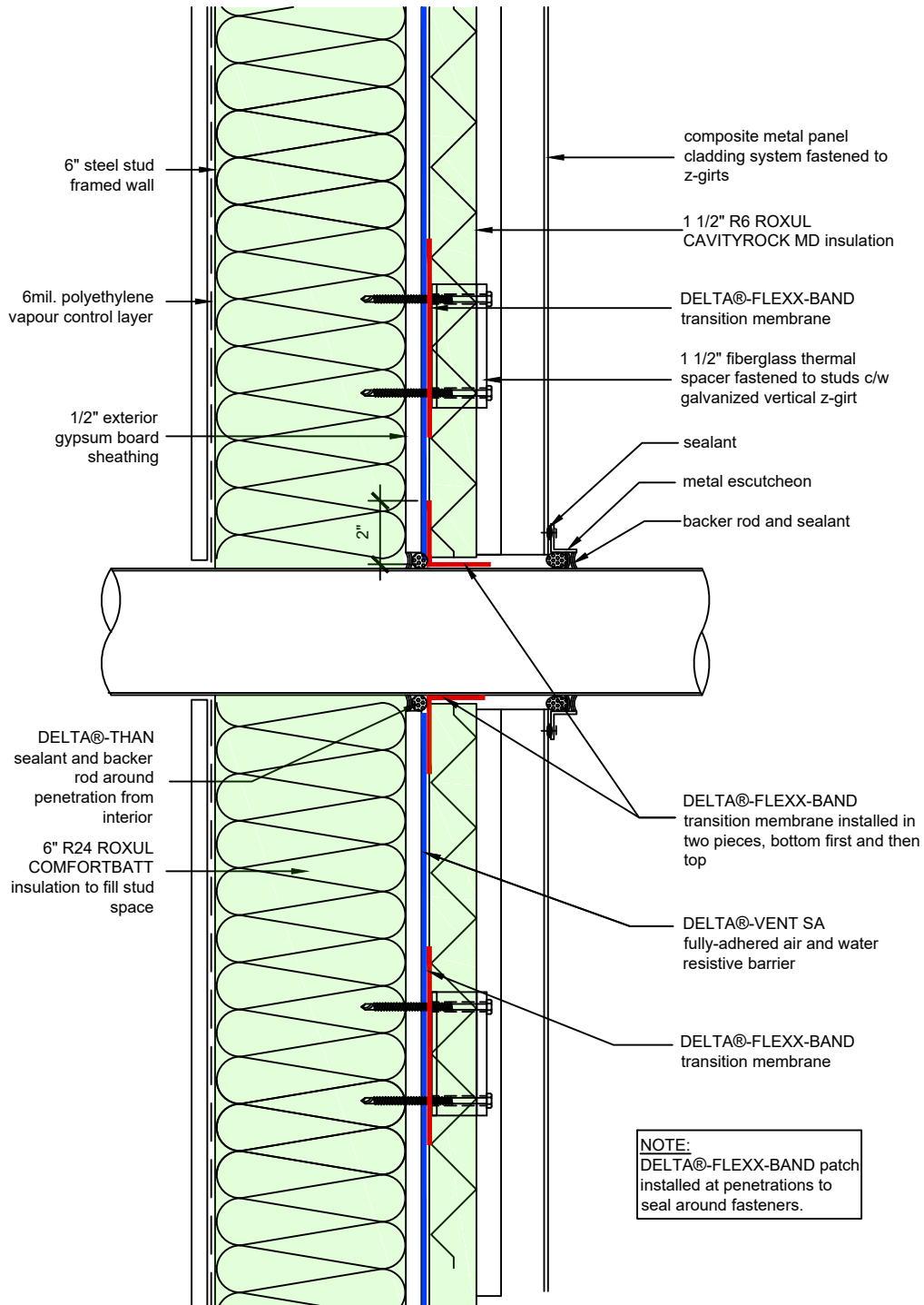
WALL ASSEMBLY #4: TYPICAL CURTAIN WALL SILL

DRAWN BY: DÖRKEN SYSTEMS INC. & RDH BUILDING SCIENCE LABORATORIES

DÖRKEN

DELTA

4655 DELTA WAY BEAMSVILLE, ON. L0R 1B4 CANADA
1-888-433-5824 or 1-905-563-3255



SUBSTANTIAL EFFORT HAS BEEN MADE TO ENSURE THAT THE INFORMATION IN THIS DETAIL DRAWING IS ACCURATE. DÖRKEN SYSTEMS INC. RDH BUILDING SCIENCE LABORATORIES CANNOT ACCEPT RESPONSIBILITY FOR ANY ERRORS OR OVERSIGHTS IN THE USE OF THIS MATERIAL OR IN THE PREPARATION OF ARCHITECTURAL OR ENGINEERING PLANS. THE DESIGN PROFESSIONAL MUST RECOGNIZE THAT NO DESIGN DETAIL CAN SUBSTITUTE FOR EXPERIENCED ENGINEERING AND PROFESSIONAL JUDGEMENT.

TITLE:

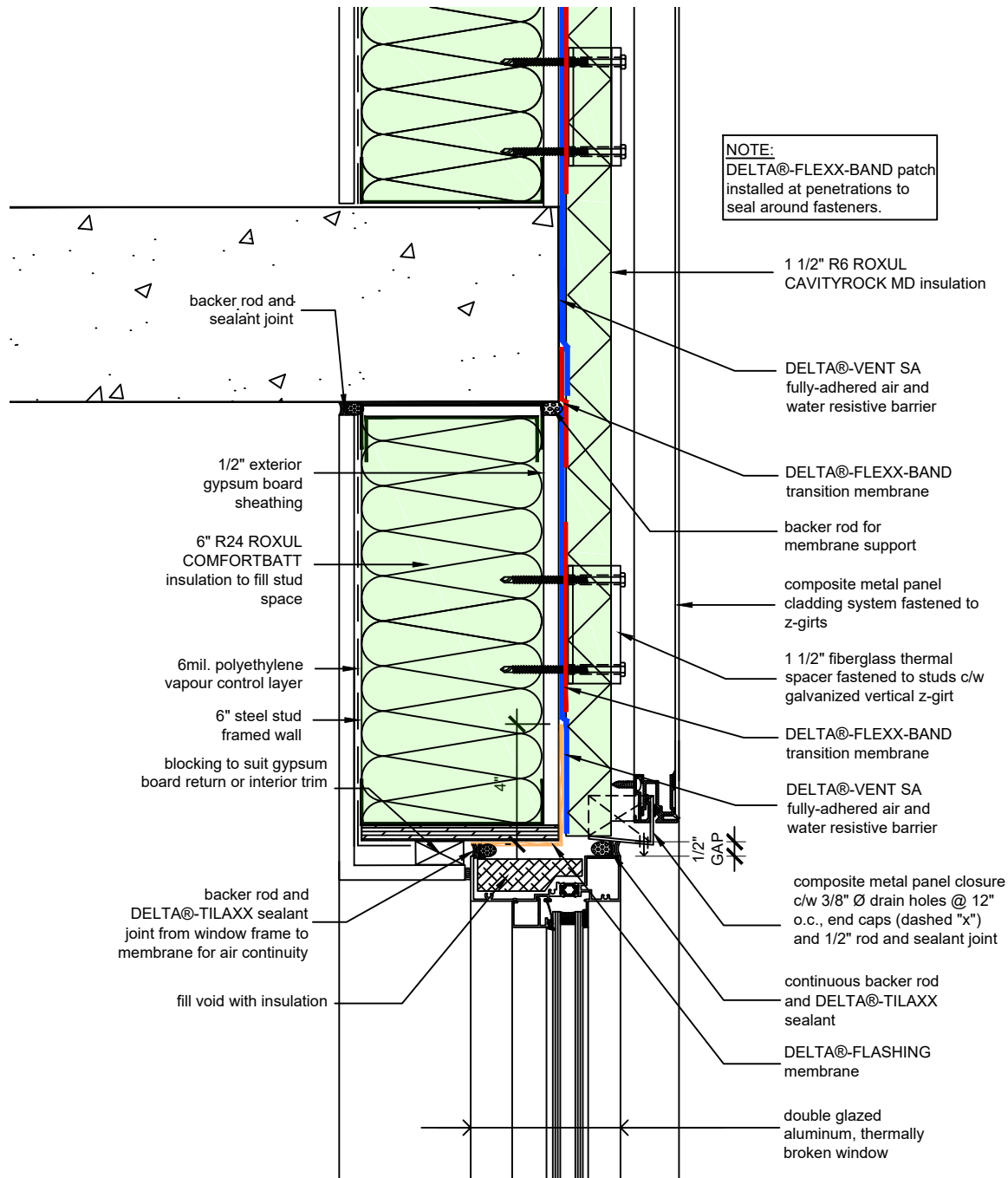
WALL ASSEMBLY #4: TYPICAL PENETRATION

DRAWN BY: DÖRKEN SYSTEMS INC. & RDH BUILDING SCIENCE LABORATORIES

DÖRKEN

DELTA

4655 DELTA WAY BEAMSVILLE, ON. L0R 1B4 CANADA
1-888-433-5824 or 1-905-563-3255



SUBSTANTIAL EFFORT HAS BEEN MADE TO ENSURE THAT THE INFORMATION IN THIS DETAIL DRAWING IS ACCURATE. DÖRKEN SYSTEMS INC. RDH BUILDING SCIENCE LABORATORIES CANNOT ACCEPT RESPONSIBILITY FOR ANY ERRORS OR OVERSIGHTS IN THE USE OF THIS MATERIAL OR IN THE PREPARATION OF ARCHITECTURAL OR ENGINEERING PLANS. THE DESIGN PROFESSIONAL MUST RECOGNIZE THAT NO DESIGN DETAIL CAN SUBSTITUTE FOR EXPERIENCED ENGINEERING AND PROFESSIONAL JUDGEMENT.

TITLE:

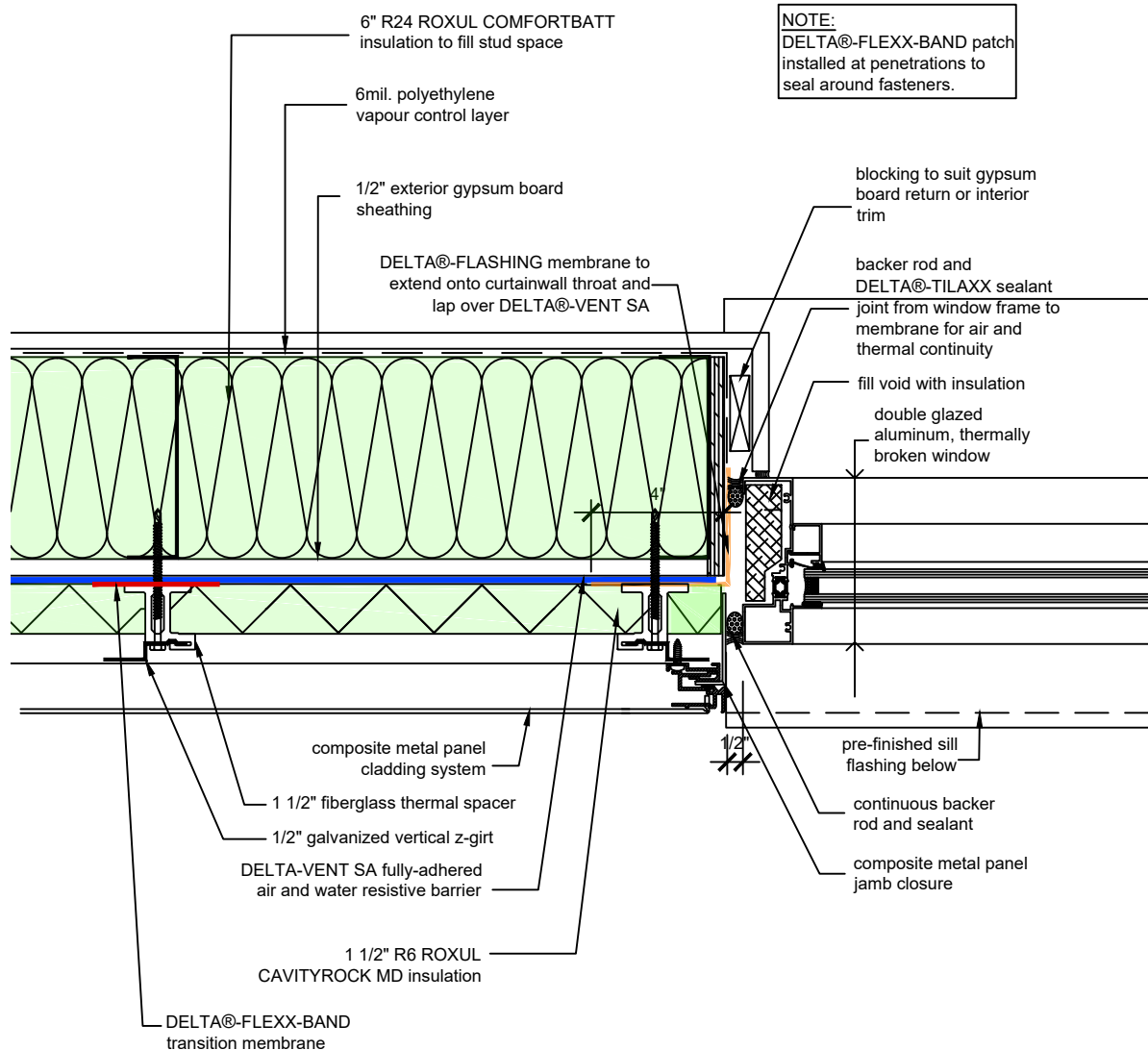
WALL ASSEMBLY #4: TYPICAL PUNCHED WINDOW HEAD

DRAWN BY: DÖRKEN SYSTEMS INC. & RDH BUILDING SCIENCE LABORATORIES

DÖRKEN



4655 DELTA WAY BEAMSVILLE, ON. L0R 1B4 CANADA
1-888-433-5824 or 1-905-563-3255



SUBSTANTIAL EFFORT HAS BEEN MADE TO ENSURE THAT THE INFORMATION IN THIS DETAIL DRAWING IS ACCURATE. DÖRKEN SYSTEMS INC. RDH BUILDING SCIENCE LABORATORIES CANNOT ACCEPT RESPONSIBILITY FOR ANY ERRORS OR OVERSIGHTS IN THE USE OF THIS MATERIAL OR IN THE PREPARATION OF ARCHITECTURAL OR ENGINEERING PLANS. THE DESIGN PROFESSIONAL MUST RECOGNIZE THAT NO DESIGN DETAIL CAN SUBSTITUTE FOR EXPERIENCED ENGINEERING AND PROFESSIONAL JUDGEMENT.

TITLE:

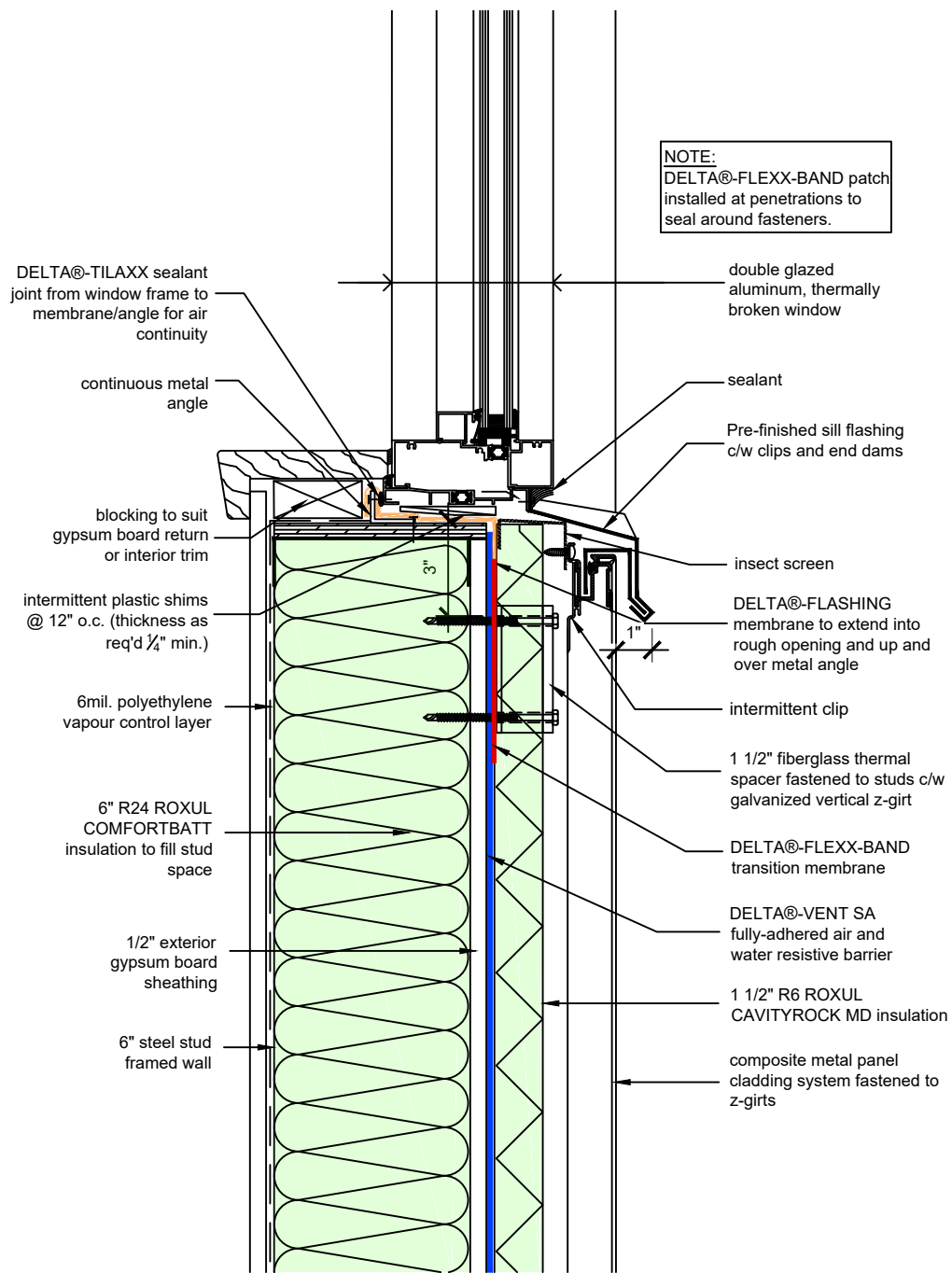
WALL ASSEMBLY #4: TYPICAL PUNCHED WINDOW JAMB

DRAWN BY: DÖRKEN SYSTEMS INC. & RDH BUILDING SCIENCE LABORATORIES

DÖRKEN

DELTA

4655 DELTA WAY BEAMSVILLE, ON. L0R 1B4 CANADA
1-888-433-5824 or 1-905-563-3255



SUBSTANTIAL EFFORT HAS BEEN MADE TO ENSURE THAT THE INFORMATION IN THIS DETAIL DRAWING IS ACCURATE. DÖRKEN SYSTEMS INC. RDH BUILDING SCIENCE LABORATORIES CANNOT ACCEPT RESPONSIBILITY FOR ANY ERRORS OR OVERSIGHTS IN THE USE OF THIS MATERIAL OR IN THE PREPARATION OF ARCHITECTURAL OR ENGINEERING PLANS. THE DESIGN PROFESSIONAL MUST RECOGNIZE THAT NO DESIGN DETAIL CAN SUBSTITUTE FOR EXPERIENCED ENGINEERING AND PROFESSIONAL JUDGEMENT.

TITLE:

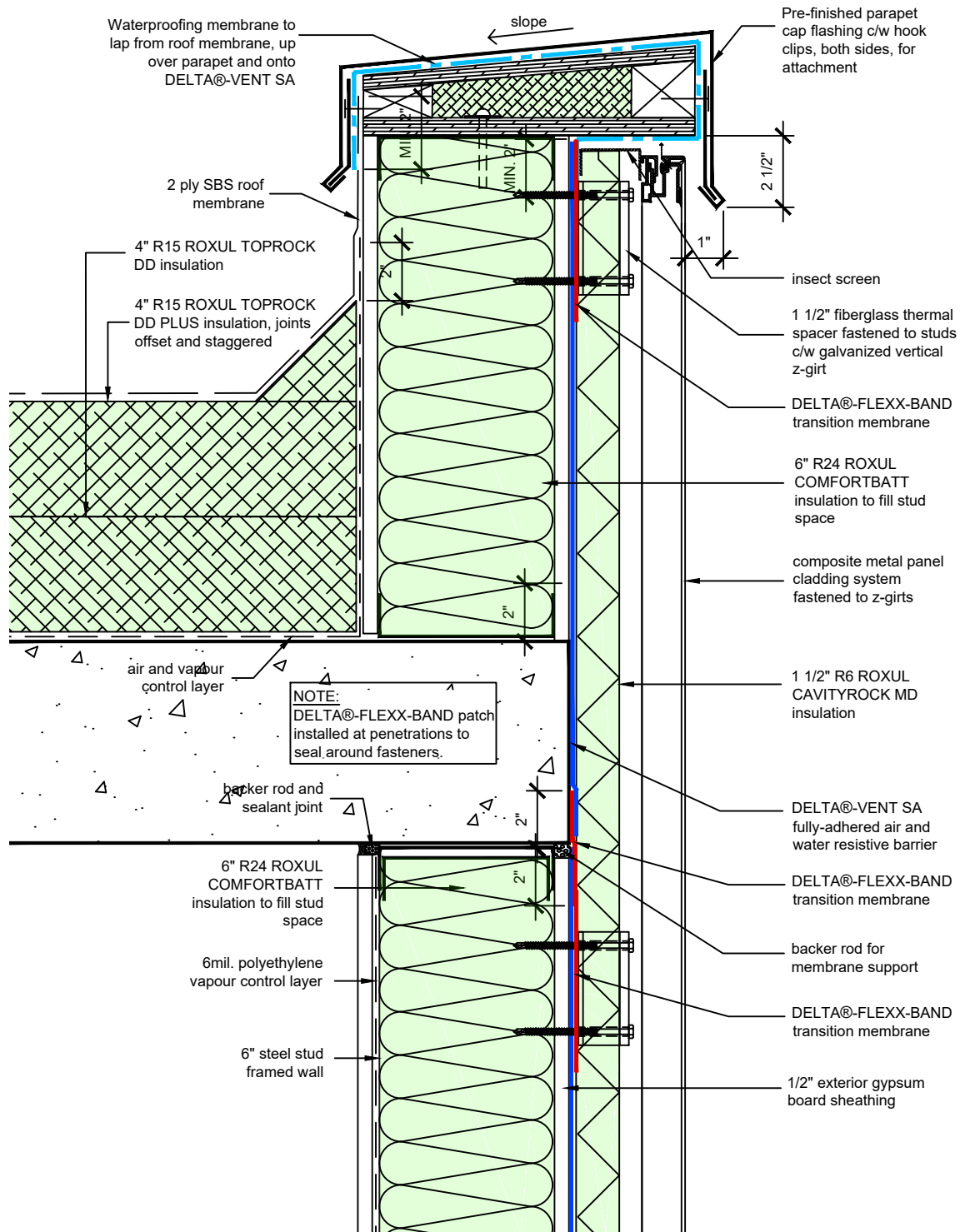
WALL ASSEMBLY #4: TYPICAL PUNCHED WINDOW SILL

DRAWN BY: DÖRKEN SYSTEMS INC. & RDH BUILDING SCIENCE LABORATORIES

DÖRKEN



4655 DELTA WAY BEAMSVILLE, ON. L0R 1B4 CANADA
1-888-433-5824 or 1-905-563-3255



SUBSTANTIAL EFFORT HAS BEEN MADE TO ENSURE THAT THE INFORMATION IN THIS DETAIL DRAWING IS ACCURATE. DÖRKEN SYSTEMS INC. RDH BUILDING SCIENCE LABORATORIES CANNOT ACCEPT RESPONSIBILITY FOR ANY ERRORS OR OVERSIGHTS IN THE USE OF THIS MATERIAL OR IN THE PREPARATION OF ARCHITECTURAL OR ENGINEERING PLANS. THE DESIGN PROFESSIONAL MUST RECOGNIZE THAT NO DESIGN DETAIL CAN SUBSTITUTE FOR EXPERIENCED ENGINEERING AND PROFESSIONAL JUDGEMENT.

TITLE:

WALL ASSEMBLY #4: TYPICAL ROOF TO WALL SECTION

DRAWN BY: DÖRKEN SYSTEMS INC. & RDH BUILDING SCIENCE LABORATORIES

DÖRKEN

DELTA

4655 DELTA WAY BEAMSVILLE, ON. L0R 1B4 CANADA
1-888-433-5824 or 1-905-563-3255