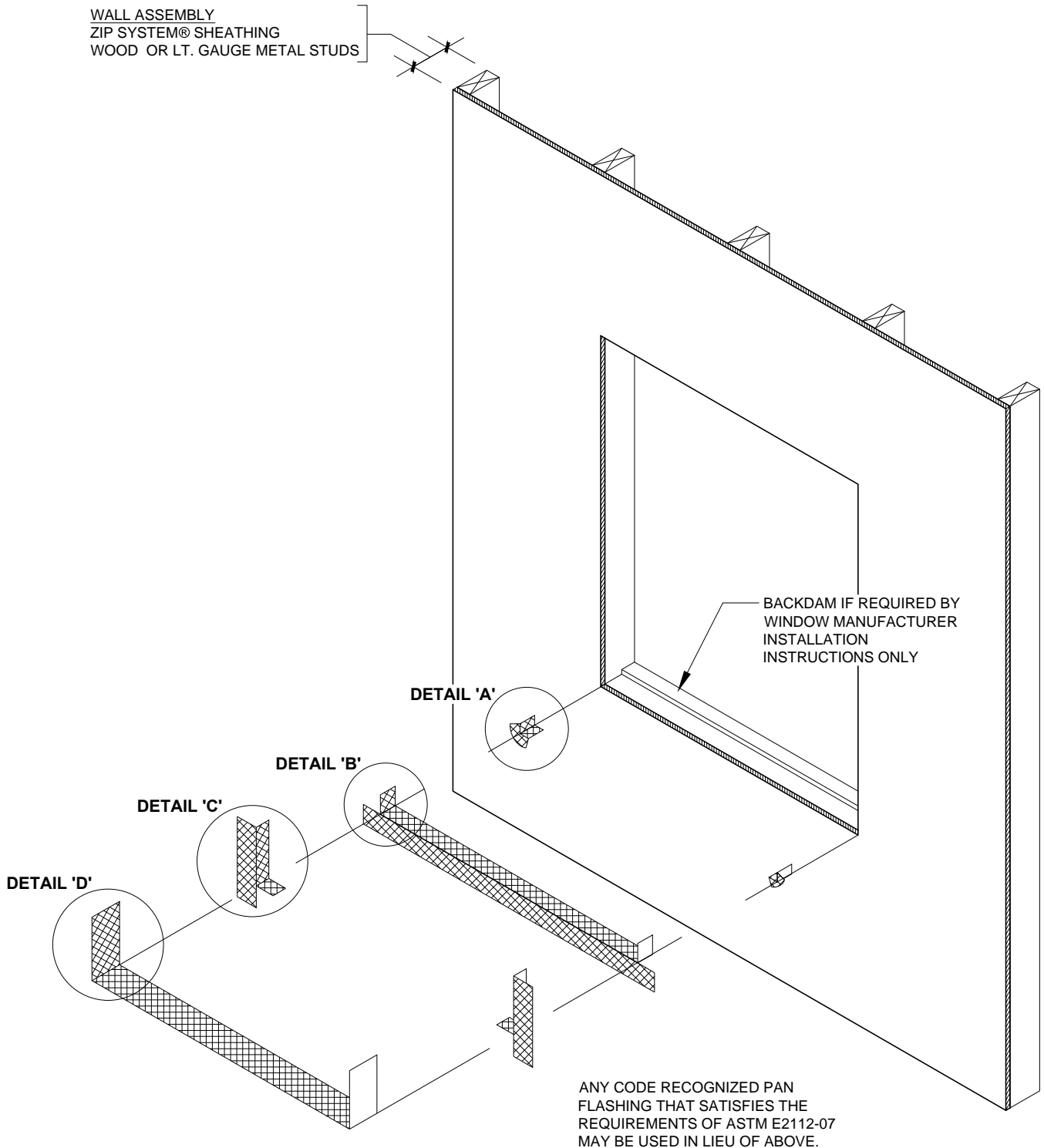


WALL ASSEMBLY
ZIP SYSTEM[®] SHEATHING
WOOD OR LT. GAUGE METAL STUDS



DRAWING NOT TO SCALE

07-09-2012

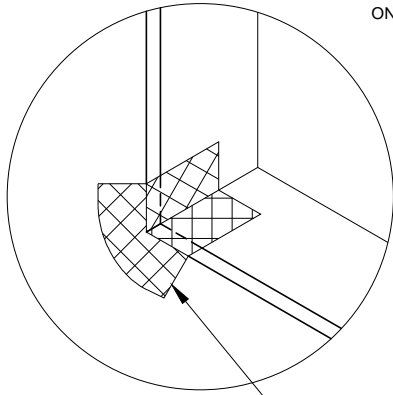
Sales Office: 10925 David Taylor Drive - Suite 300 - Charlotte, NC 28262
Telephone: 800.933.9220 - Facsimile: 704.547.9228 - www.zipsystem.com

another innovation from



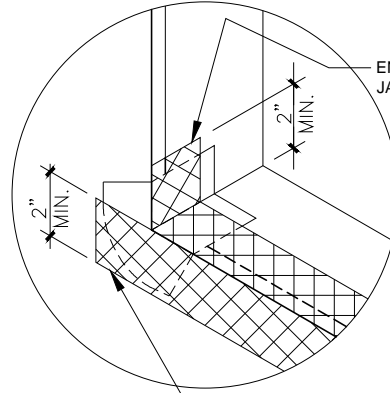
These construction details are provided to assist in the installation of ZIP System[®] product(s) and may not apply to every situation. Manufacturer accepts no responsibility or liability for the use of these or other construction details.

STEP 1:
INSTALL ZIP SYSTEM[®] TAPE
CORNER PATCH CENTERED
ON OUTSIDE CORNER.



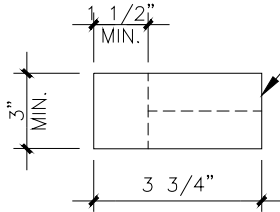
ZIP SYSTEM[®] TAPE CORNER
PATCHES

STEP 2:
INSTALL ZIP SYSTEM[®] TAPE
AS TYPE III PAN FLASHING.



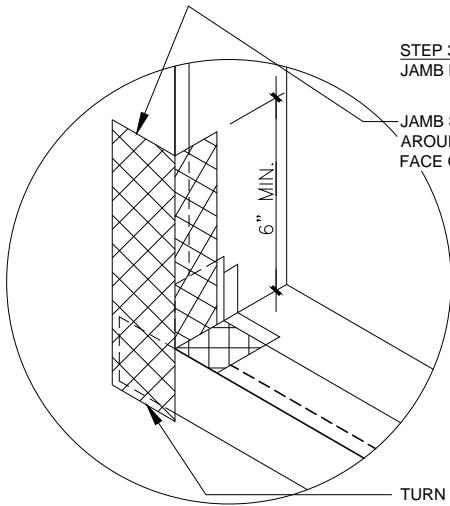
END DAM - TURN UP AT
JAMB MIN. 2-INCHES

EXTEND SILL END PIECE
PAST JAMB MIN. 2-INCHES



THE CORNER PATCH IS A
RECTANGULAR STRIP OF ZIP
SYSTEM[®] TAPE, PLACED INTO
THE CORNER OF THE WINDOW
OPENING AND FOLDED ONTO
THE FACE OF THE ZIP
SYSTEM[®] WALL SHEATHING

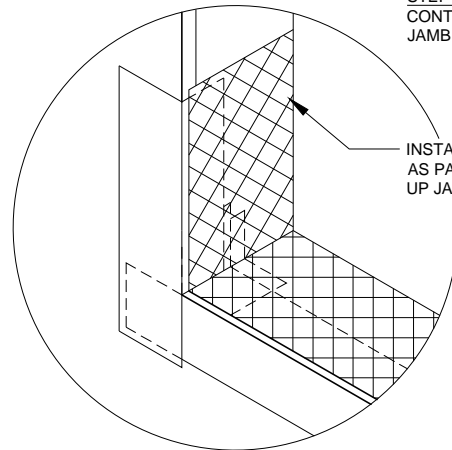
STEP 3:
JAMB PIECE



JAMB SIDE FLANGE - TURN
AROUND CORNER TO
FACE OF WALL.

TURN JAMB SIDE
FLANGE DOWN OVER
SILL AND EXTEND
PAST SILL END PIECE

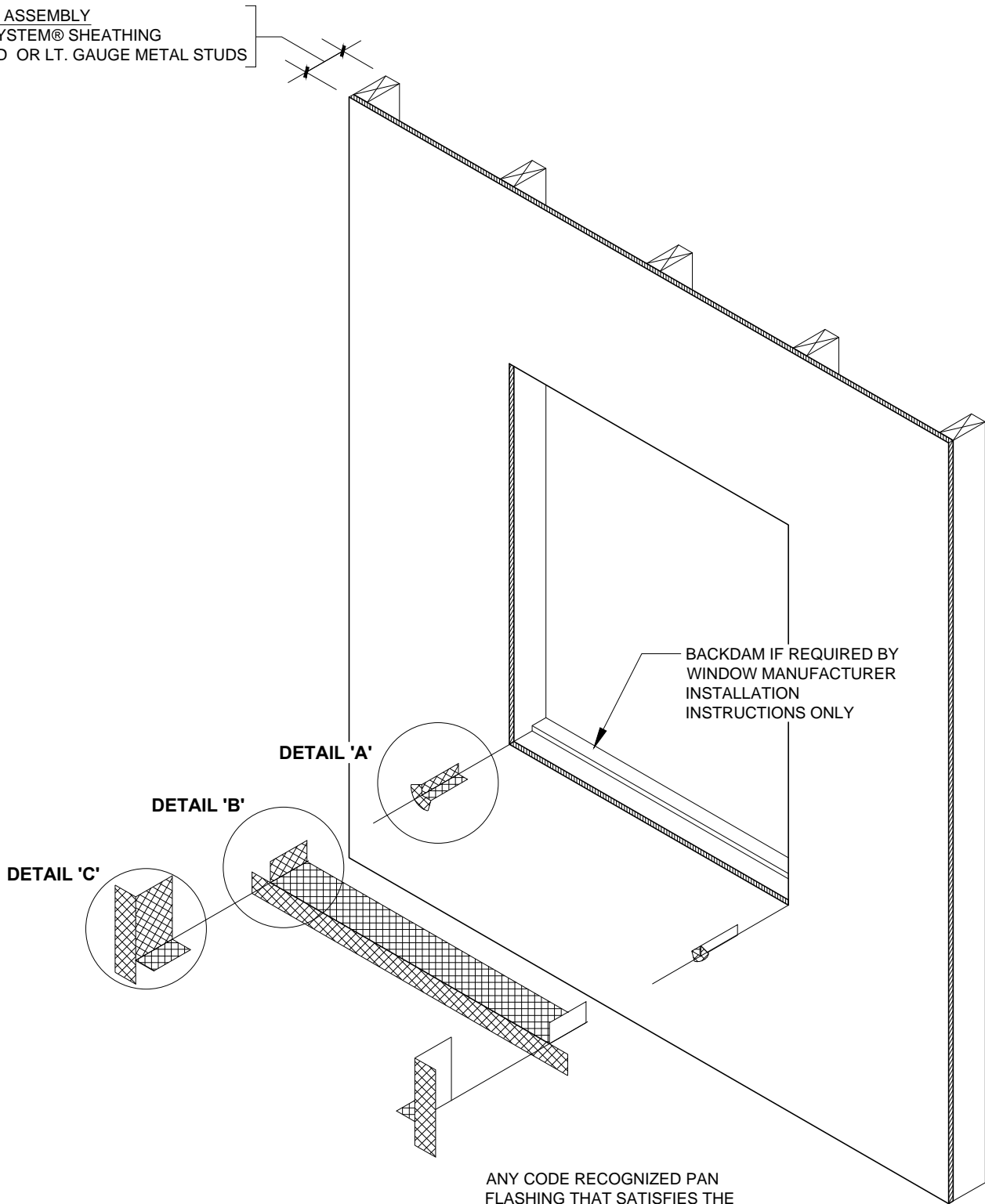
STEP 4:
CONTINUOUS PAN AND
JAMB PIECE



INSTALL ZIP SYSTEM TAPE
AS PAN FLASHING. TURN
UP JAMBS MIN. 6-INCHES.

DRAWING NOT TO SCALE

WALL ASSEMBLY
ZIP SYSTEM[®] SHEATHING
WOOD OR LT. GAUGE METAL STUDS



BACKDAM IF REQUIRED BY
WINDOW MANUFACTURER
INSTALLATION
INSTRUCTIONS ONLY

DETAIL 'A'

DETAIL 'B'

DETAIL 'C'

ANY CODE RECOGNIZED PAN
FLASHING THAT SATISFIES THE
REQUIREMENTS OF ASTM E2112-07
MAY BE USED IN LIEU OF ABOVE.

DRAWING NOT TO SCALE

07-09-2012

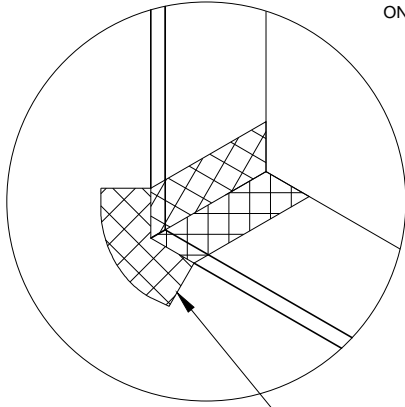
Sales Office: 10925 David Taylor Drive - Suite 300 - Charlotte, NC 28262
Telephone: 800.933.9220 - Facsimile: 704.547.9228 - www.zipsystem.com

another innovation from



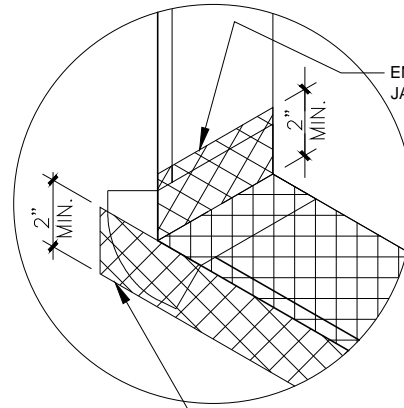
These construction details are provided to assist in the installation of ZIP System[®] product(s) and may not apply to every situation. Manufacturer accepts no responsibility or liability for the use of these or other construction details.

STEP 1:
INSTALL ZIP SYSTEM[®] TAPE
CORNER PATCH CENTERED
ON OUTSIDE CORNER.



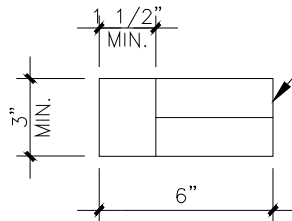
ZIP SYSTEM[®] TAPE CORNER
PATCHES

STEP 2:
INSTALL ZIP SYSTEM[®] TAPE
AS TYPE III PAN FLASHING.



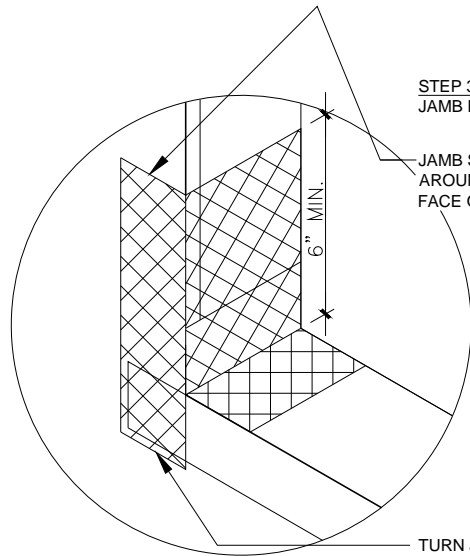
END DAM - TURN UP AT
JAMB MIN. 2-INCHES

EXTEND SILL END PIECE
PAST JAMB MIN. 2-INCHES



THE CORNER PATCH IS A
RECTANGULAR STRIP OF ZIP
SYSTEM[®] TAPE, PLACED INTO
THE CORNER OF THE WINDOW
OPENING AND FOLDED ONTO
THE FACE OF THE ZIP
SYSTEM[®] WALL SHEATHING

STEP 3:
JAMB PIECE



JAMB SIDE FLANGE - TURN
AROUND CORNER TO
FACE OF WALL.

TURN JAMB SIDE
FLANGE DOWN OVER
SILL AND EXTEND
PAST SILL END PIECE

DRAWING NOT TO SCALE

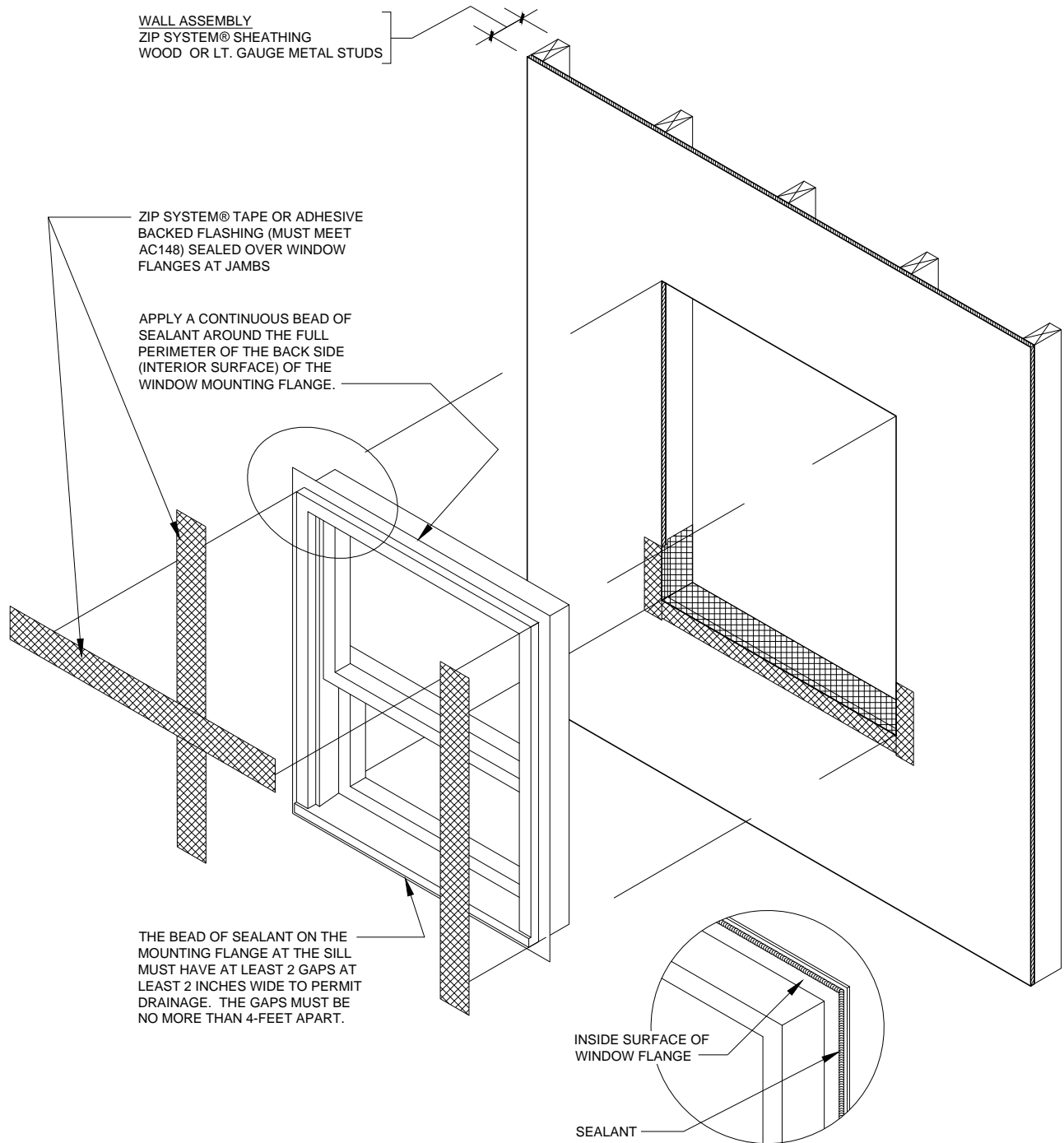
07-09-2012

Sales Office: 10925 David Taylor Drive - Suite 300 - Charlotte, NC 28262
Telephone: 800.933.9220 - Facsimile: 704.547.9228 - www.zipsystem.com

another innovation from



These construction details are provided to assist in the installation of ZIP System[®] product(s) and may not apply to every situation. Manufacturer accepts no responsibility or liability for the use of these or other construction details.



DRAWING NOT TO SCALE

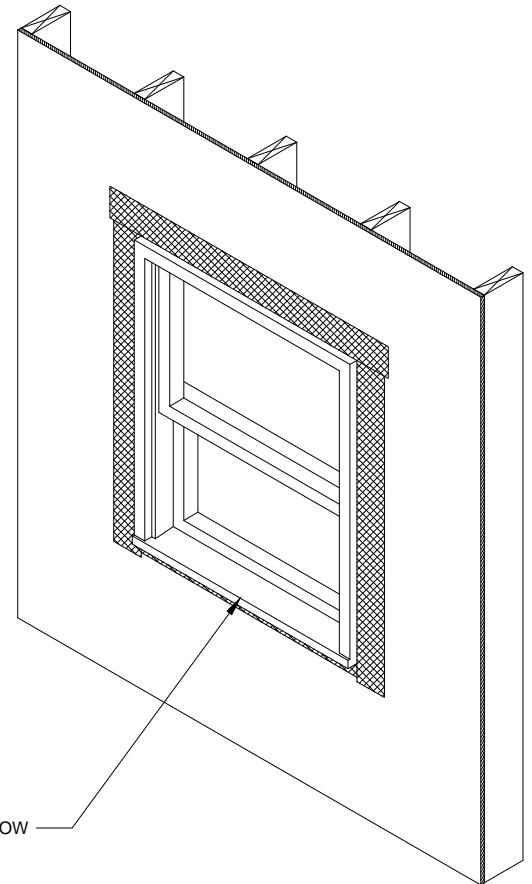
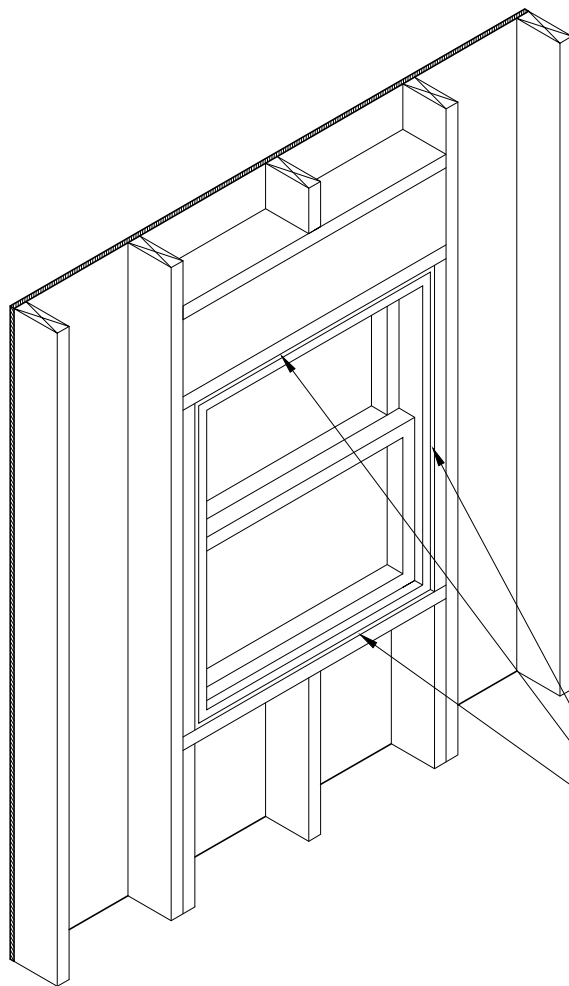
07-09-2012

Sales Office: 10925 David Taylor Drive - Suite 300 - Charlotte, NC 28262
Telephone: 800.933.9220 - Facsimile: 704.547.9228 - www.zipsystem.com

another innovation from



These construction details are provided to assist in the installation of ZIP System[®] product(s) and may not apply to every situation. Manufacturer accepts no responsibility or liability for the use of these or other construction details.



INSTALLED WINDOW

FROM THE INTERIOR, INSTALL LOW PRESSURE POLYURETHANE FOAM BETWEEN WINDOW AND ROUGH OPENING TO MAINTAIN CONTINUITY OF THE AIR BARRIER. IF GAP IS TOO NARROW TO ALLOW FOR USE OF POLYURETHANE, USE A CAULK SEALANT COMPATIBLE WITH FLASHINGS AT THE SILL AND THE JAMBS. IF ZIP SYSTEM[®] TAPE IS USED AT THE SILL AND THE JAMBS, COMPATIBLE SEALANTS ARE POLYURETHANE, BUTYL, AND SILICONE.

DRAWING NOT TO SCALE

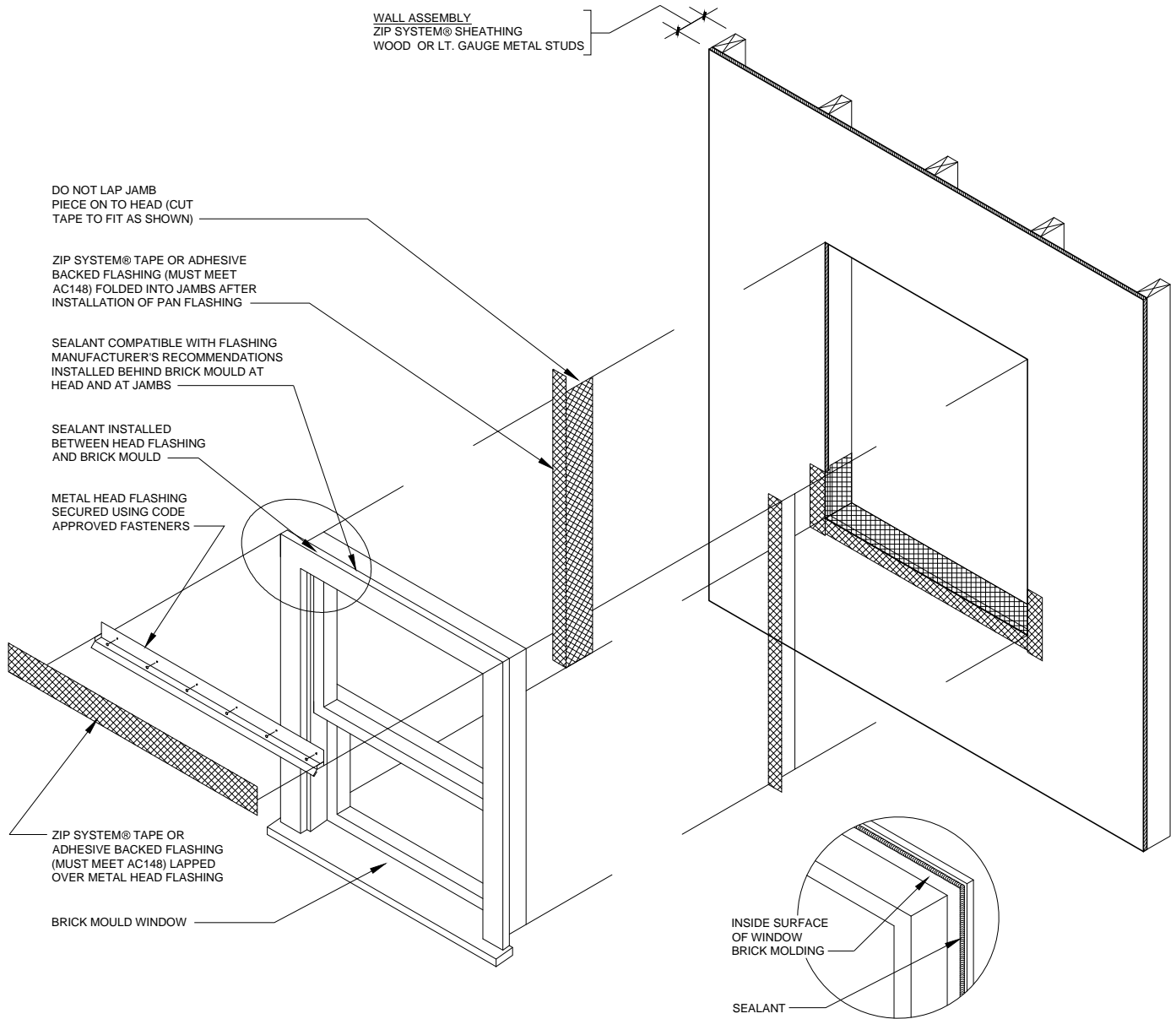
07-09-2012

Sales Office: 10925 David Taylor Drive - Suite 300 - Charlotte, NC 28262
Telephone: 800.933.9220 - Facsimile: 704.547.9228 - www.zipsystem.com

another innovation from



These construction details are provided to assist in the installation of ZIP System[®] product(s) and may not apply to every situation. Manufacturer accepts no responsibility or liability for the use of these or other construction details.



These construction details are provided to assist in the installation of ZIP System[®] product(s) and may not apply to every situation. Manufacturer accepts no responsibility or liability for the use of these or other construction details.

DRAWING NOT TO SCALE

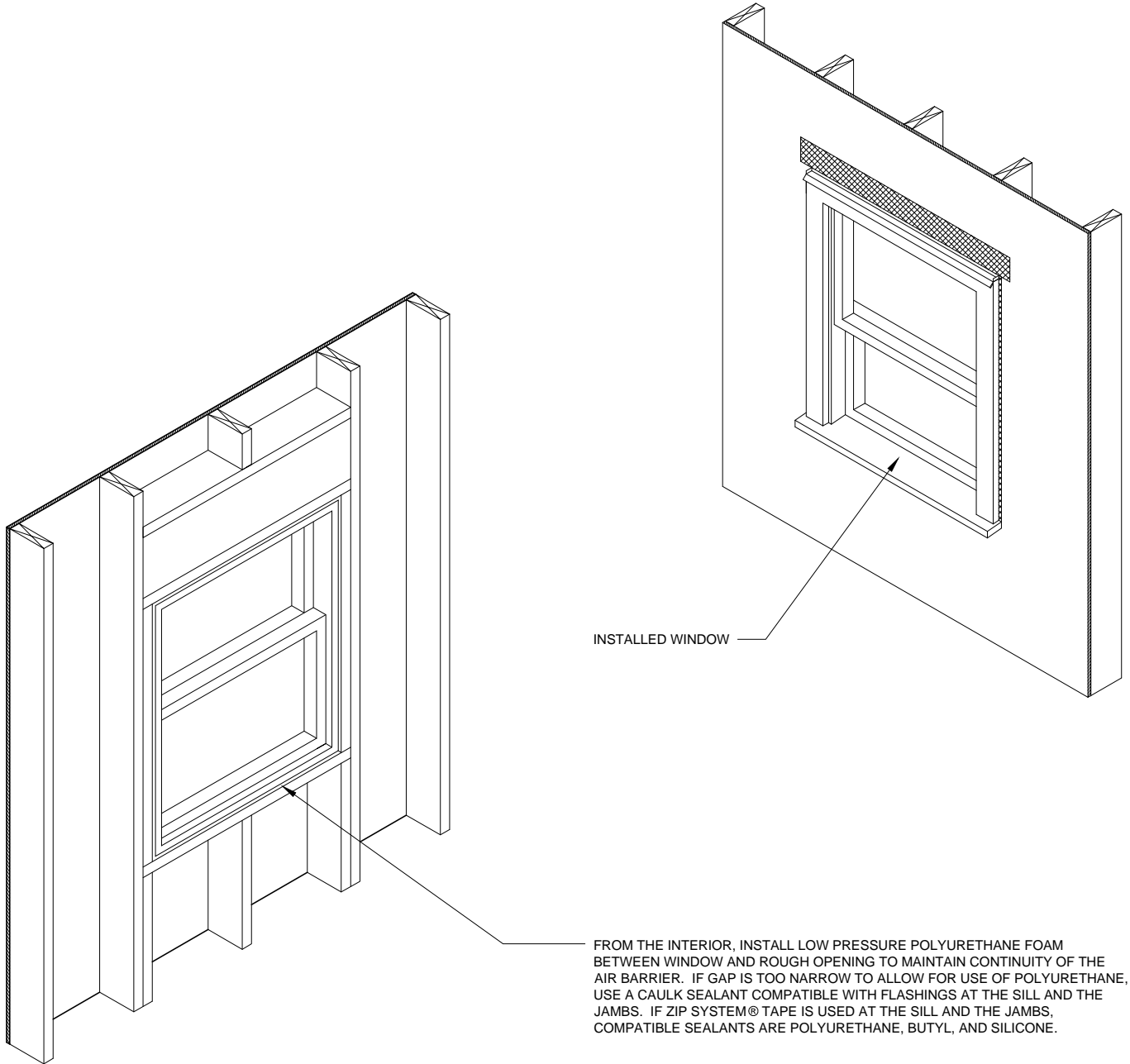
07-09-2012

Sales Office: 10925 David Taylor Drive - Suite 300 - Charlotte, NC 28262
Telephone: 800.933.9220 - Facsimile: 704.547.9228 - www.zipsystem.com

another innovation from



These construction details are provided to assist in the installation of ZIP System[®] product(s) and may not apply to every situation. Manufacturer accepts no responsibility or liability for the use of these or other construction details.



DRAWING NOT TO SCALE

07-09-2012

Sales Office: 10925 David Taylor Drive - Suite 300 - Charlotte, NC 28262
Telephone: 800.933.9220 - Facsimile: 704.547.9228 - www.zipsystem.com

another innovation from



These construction details are provided to assist in the installation of ZIP System[®] product(s) and may not apply to every situation. Manufacturer accepts no responsibility or liability for the use of these or other construction details.

WALL ASSEMBLY
 BRICK VENEER
 AIR SPACE (AS PRESCRIBED BY
 LOCAL BUILDING CODE)
 ZIP SYSTEM® SHEATHING
 WOOD OR LT. GA. METAL STUDS

TOP EDGE OF FLASHING TAPED
 WITH ZIP SYSTEM® TAPE OR
 ADHESIVE BACKED FLASHING.
 (MUST MEET AC148)

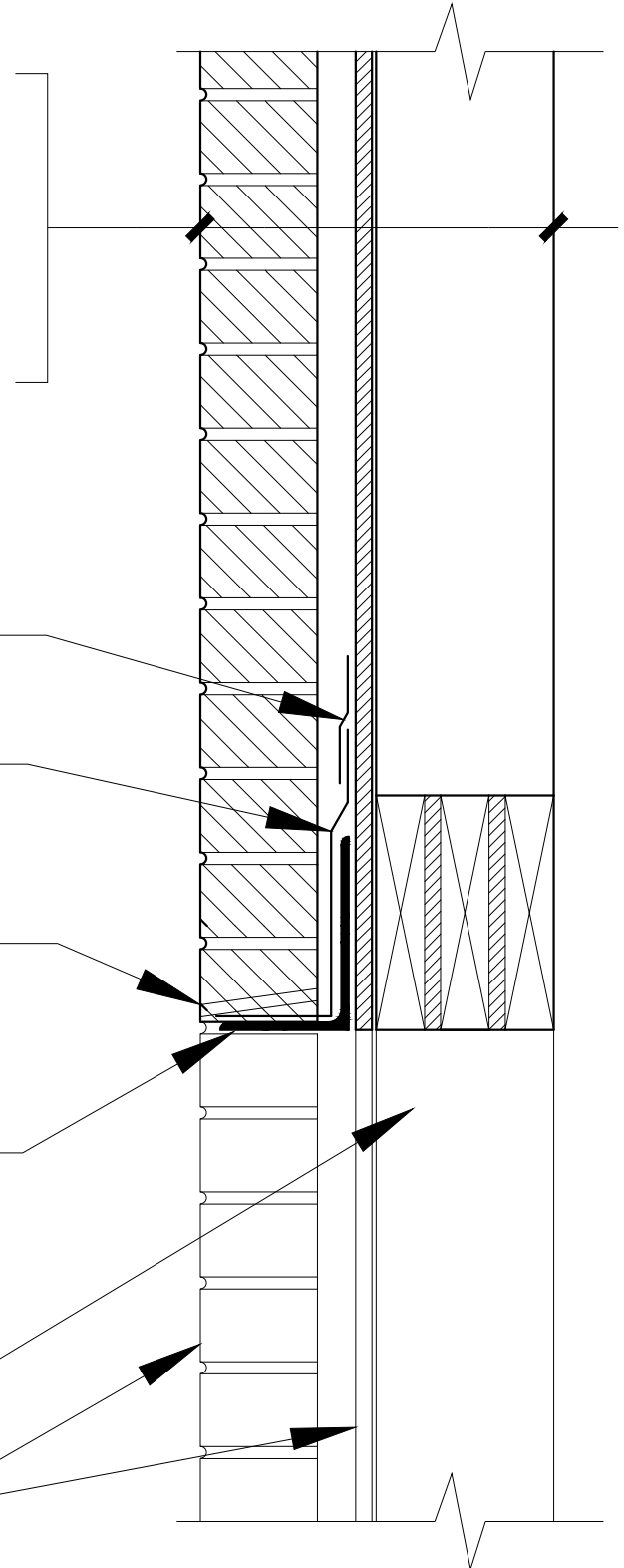
CODE APPROVED FLASHING

WEEPS (AS PRESCRIBED BY
 LOCAL BUILDING CODE)

STEEL LINTEL

INSTALL WINDOW IN
 ACCORDANCE WITH DETAILS
 24A-24D OR 25A-25D

WALL BEYOND



DRAWING NOT TO SCALE

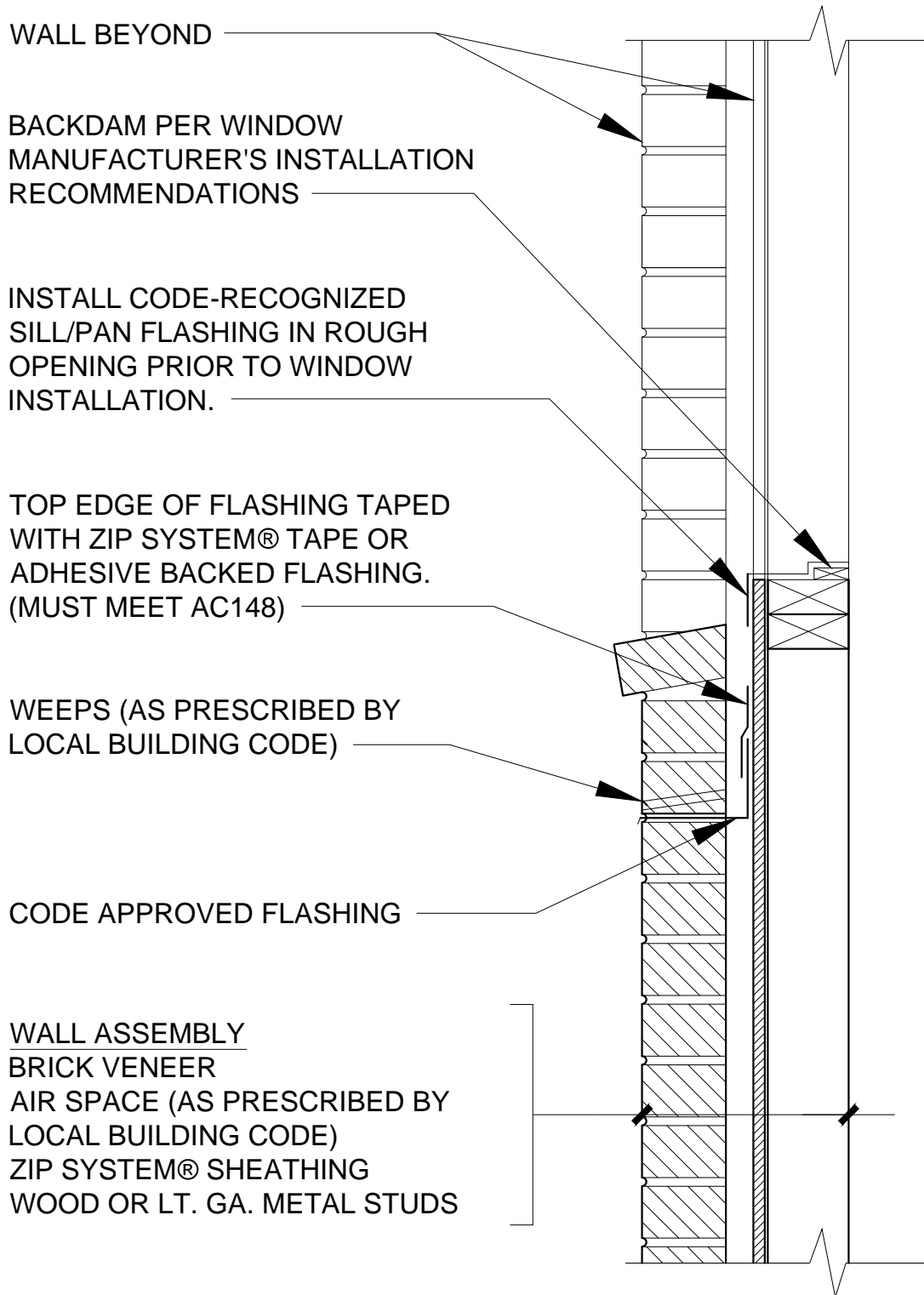
07-09-2012

Sales Office: 10925 David Taylor Drive - Suite 300 - Charlotte, NC 28262
 Telephone: 800.933.9220 - Facsimile: 704.547.9228 - www.zipsystem.com

another innovation from



These construction details are provided to assist in the installation of ZIP System ® product(s) and may not apply to every situation. Manufacturer accepts no responsibility or liability for the use of these or other construction details.



WALL BEYOND

BACKDAM PER WINDOW
MANUFACTURER'S INSTALLATION
RECOMMENDATIONS

INSTALL CODE-RECOGNIZED
SILL/PAN FLASHING IN ROUGH
OPENING PRIOR TO WINDOW
INSTALLATION.

TOP EDGE OF FLASHING TAPED
WITH ZIP SYSTEM[®] TAPE OR
ADHESIVE BACKED FLASHING.
(MUST MEET AC148)

WEEPS (AS PRESCRIBED BY
LOCAL BUILDING CODE)

CODE APPROVED FLASHING

WALL ASSEMBLY
BRICK VENEER
AIR SPACE (AS PRESCRIBED BY
LOCAL BUILDING CODE)
ZIP SYSTEM[®] SHEATHING
WOOD OR LT. GA. METAL STUDS

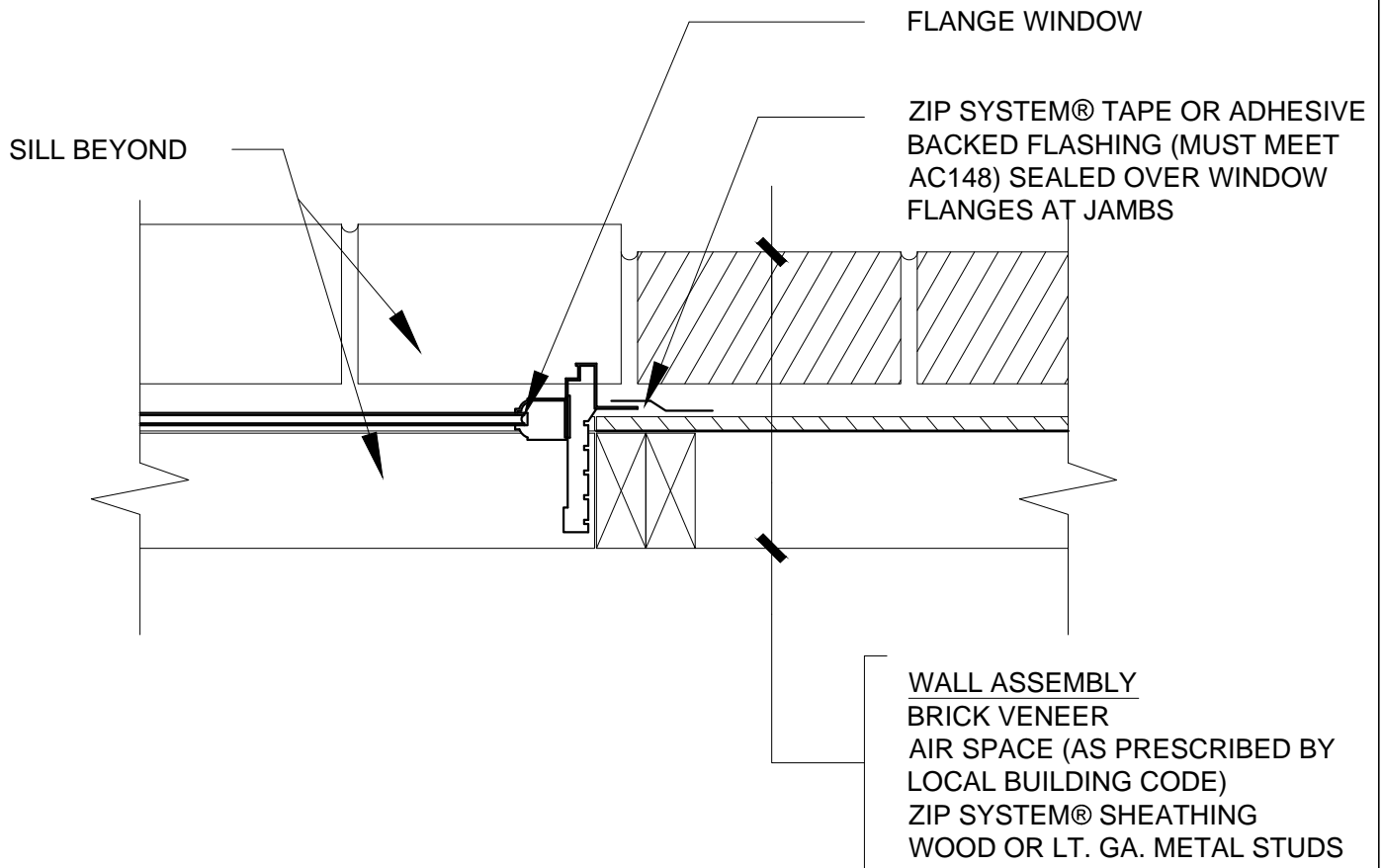
DRAWING NOT TO SCALE

07-09-2012

Sales Office: 10925 David Taylor Drive - Suite 300 - Charlotte, NC 28262
Telephone: 800.933.9220 - Facsimile: 704.547.9228 - www.zipsystem.com



These construction details are provided to assist in the installation of ZIP System[®] product(s) and may not apply to every situation. Manufacturer accepts no responsibility or liability for the use of these or other construction details.



DRAWING NOT TO SCALE

07-09-2012

Sales Office: 10925 David Taylor Drive - Suite 300 - Charlotte, NC 28262
Telephone: 800.933.9220 - Facsimile: 704.547.9228 - www.zipsystem.com

another innovation from



**ENGINEERED
WOODS**

These construction details are provided to assist in the installation of ZIP System[®] product(s) and may not apply to every situation. Manufacturer accepts no responsibility or liability for the use of these or other construction details.