

WALL ASSEMBLY
ZIP SYSTEM[®] SHEATHING
WOOD OR LT. GA. METAL STUDS

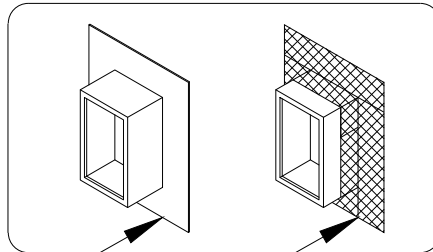
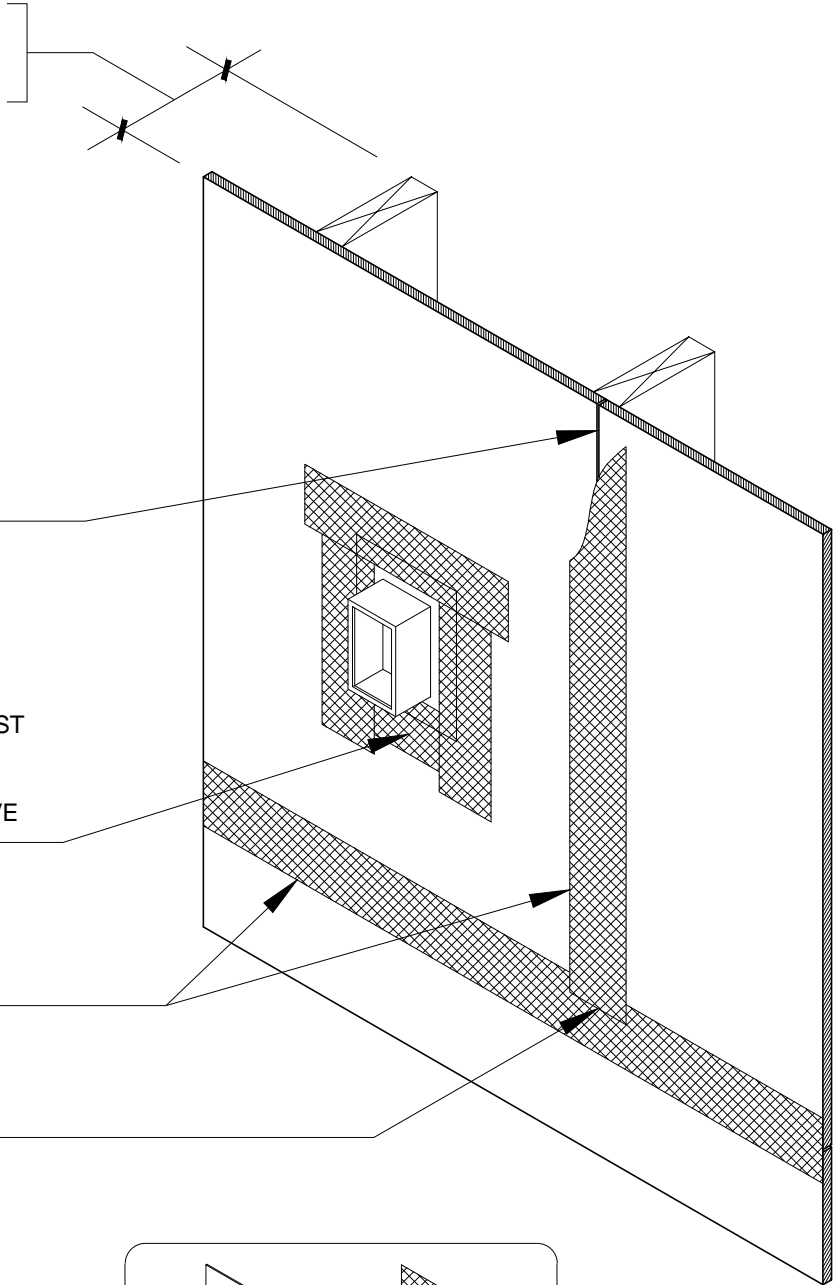
1/8-INCH GAP RECOMMENDED AT
PANEL EDGES UNLESS
OTHERWISE PROVIDED BY
MACHINED PROFILED EDGES

INSTALL ZIP SYSTEM[®] TAPE OR
ADHESIVE BACKED FLASHING (MUST
MEET AC148) IN SEQUENCE FROM
BOTTOM, SIDES, THEN TOP TO
ENSURE SHINGLE LAP OF ADHESIVE
BACKED FLASHING

ZIP SYSTEM[®] TAPE (INSTALLED
OVER ALL JOINTS IN ZIP SYSTEM[®]
SHEATHING)

OVERLAP TAPE A MINIMUM OF
1-INCH AT ALL T-JOINTS

USE FLANGED ELECTRICAL
BOXES OR MEMBRANE FLASHING
TO PROVIDE FLANGES FOR
ELECTRICAL BOXES



DRAWING NOT TO SCALE

07-09-2012

Sales Office: 10925 David Taylor Drive - Suite 300 - Charlotte, NC 28262
Telephone: 800.933.9220 - Facsimile: 704.547.9228 - www.zipsystem.com

another innovation from



These construction details are provided to assist in the installation of ZIP System[®] product(s) and may not apply to every situation. Manufacturer accepts no responsibility or liability for the use of these or other construction details.