

WALL ASSEMBLY
 ZIP SYSTEM® SHEATHING
 WOOD OR LT. GA. METAL STUDS

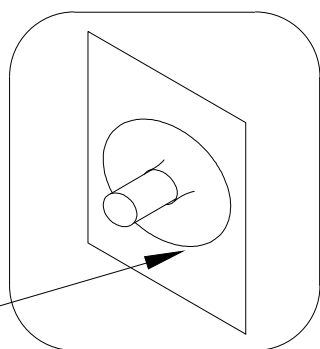
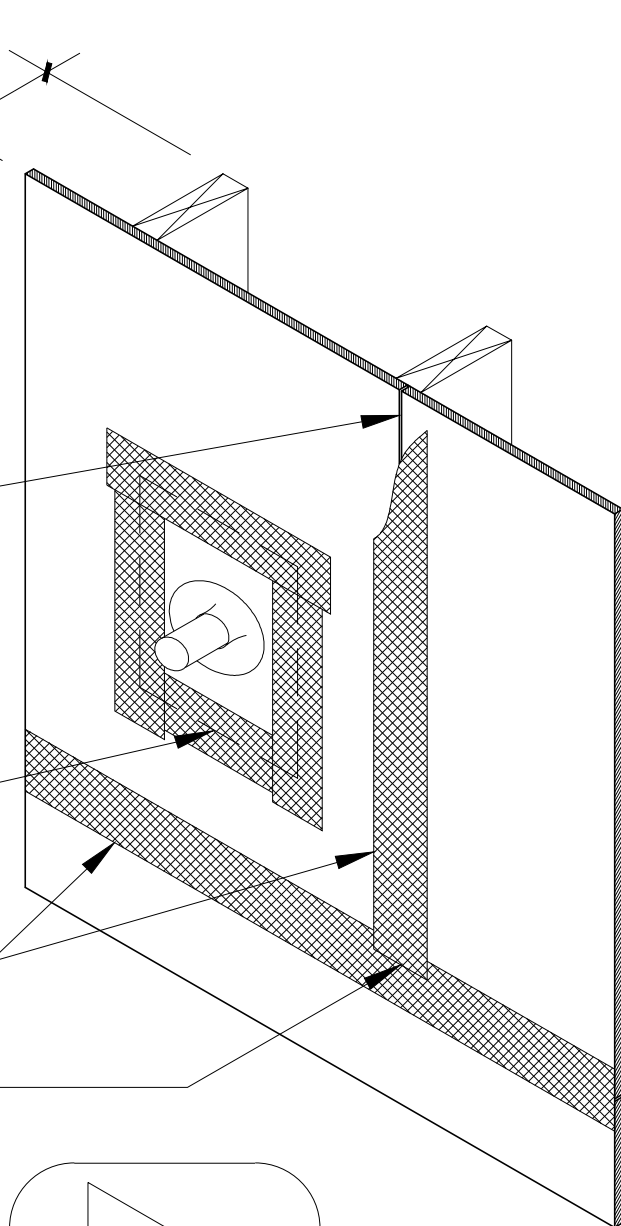
1/8-INCH GAP RECOMMENDED AT
 PANEL EDGES UNLESS
 OTHERWISE PROVIDED BY
 MACHINED PROFILED EDGES

INSTALL ZIP SYSTEM® TAPE OR
 ADHESIVE BACKED FLASHING (MUST
 MEET AC148) IN SEQUENCE FROM
 BOTTOM, SIDES, THEN TOP TO
 ENSURE SHINGLE LAP OF ADHESIVE
 BACKED FLASHING

ZIP SYSTEM® TAPE (INSTALLED
 OVER ALL JOINTS IN ZIP SYSTEM®
 WALL SHEATHING).

OVERLAP TAPE A MINIMUM OF
 1-INCH AT ALL T-JOINTS

USE QUICKFLASH® (RUBBER
 MEMBRANE FLASHING SLEEVE) TO
 PROVIDE FLANGES FOR ROUND
 PENETRATIONS.



*FOR MORE FLASHING OPTIONS, SEE RELATED ZIP SYSTEM®
 LIQUID FLASHING DETAILS

DRAWING NOT TO SCALE