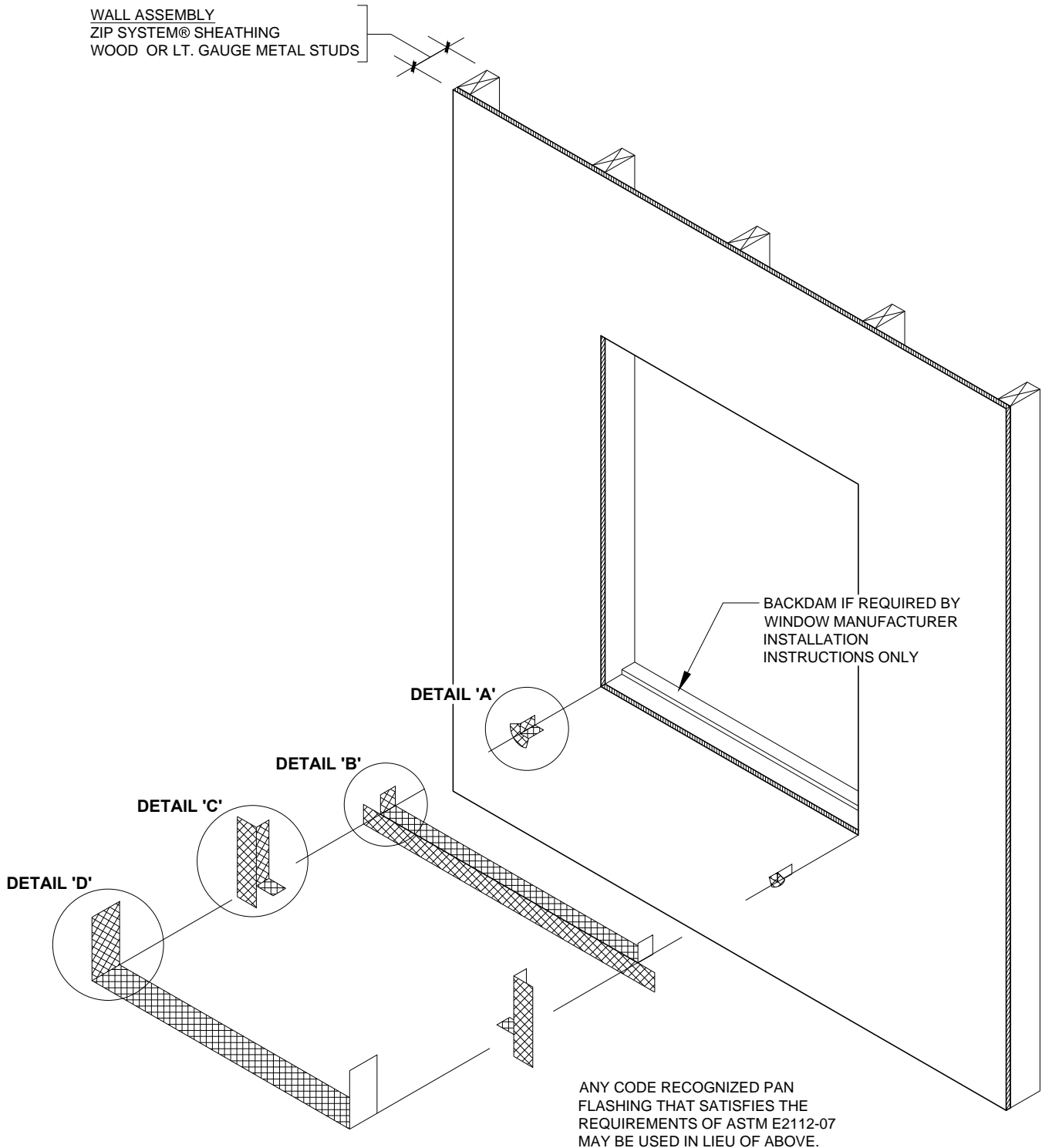


WALL ASSEMBLY
ZIP SYSTEM[®] SHEATHING
WOOD OR LT. GAUGE METAL STUDS



DRAWING NOT TO SCALE

07-09-2012

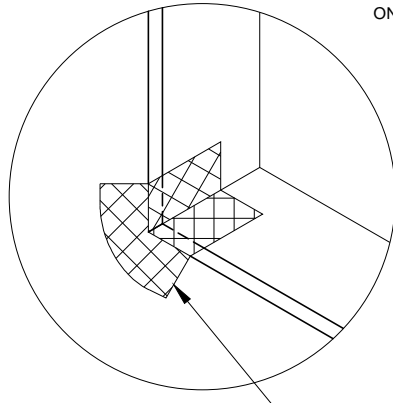
Sales Office: 10925 David Taylor Drive - Suite 300 - Charlotte, NC 28262
Telephone: 800.933.9220 - Facsimile: 704.547.9228 - www.zipsystem.com

another innovation from



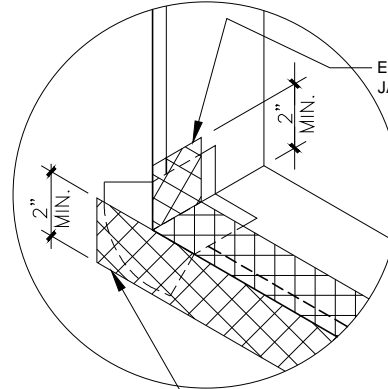
These construction details are provided to assist in the installation of ZIP System[®] product(s) and may not apply to every situation. Manufacturer accepts no responsibility or liability for the use of these or other construction details.

STEP 1:
INSTALL ZIP SYSTEM[®] TAPE
CORNER PATCH CENTERED
ON OUTSIDE CORNER.



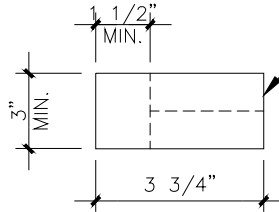
ZIP SYSTEM[®] TAPE CORNER
PATCHES

STEP 2:
INSTALL ZIP SYSTEM[®] TAPE
AS TYPE III PAN FLASHING.



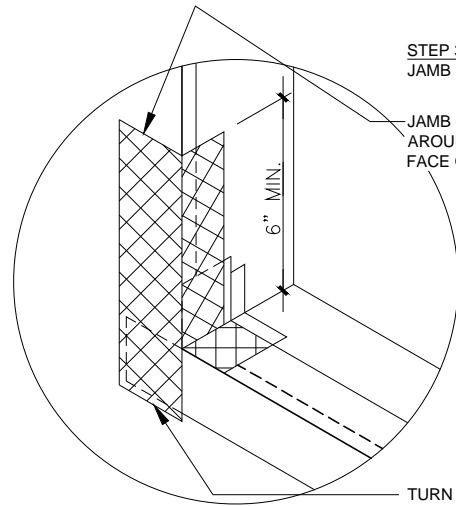
END DAM - TURN UP AT
JAMB MIN. 2-INCHES

EXTEND SILL END PIECE
PAST JAMB MIN. 2-INCHES



THE CORNER PATCH IS A
RECTANGULAR STRIP OF ZIP
SYSTEM[®] TAPE, PLACED INTO
THE CORNER OF THE WINDOW
OPENING AND FOLDED ONTO
THE FACE OF THE ZIP
SYSTEM[®] WALL SHEATHING

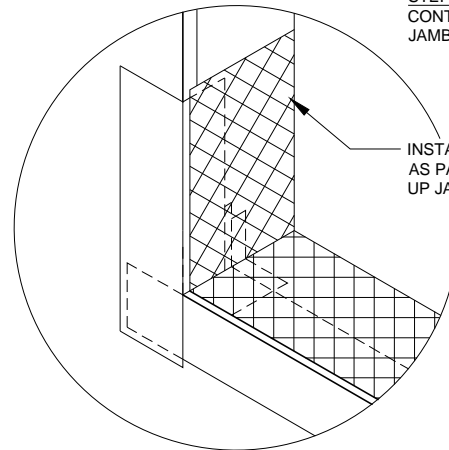
STEP 3:
JAMB PIECE



JAMB SIDE FLANGE - TURN
AROUND CORNER TO
FACE OF WALL.

TURN JAMB SIDE
FLANGE DOWN OVER
SILL AND EXTEND
PAST SILL END PIECE

STEP 4:
CONTINUOUS PAN AND
JAMB PIECE



INSTALL ZIP SYSTEM TAPE
AS PAN FLASHING. TURN
UP JAMBS MIN. 6-INCHES.

DRAWING NOT TO SCALE