

For proper performance of DELTA®-DRY ensure top and bottom remain open to allow ventilation and drainage

SUBSTANTIAL EFFORT HAS BEEN MADE TO ENSURE THAT THE INFORMATION IN THIS DETAIL DRAWING IS ACCURATE. DÖRKEN SYSTEMS INC. CANNOT ACCEPT RESPONSIBILITY FOR ANY ERRORS OR OVERSIGHTS IN THE USE OF THIS MATERIAL OR IN THE PREPARATION OF ARCHITECTURAL OR ENGINEERING PLANS. THE DESIGN PROFESSIONAL MUST RECOGNIZE THAT NO DESIGN DETAIL CAN SUBSTITUTE FOR EXPERIENCED ENGINEERING AND PROFESSIONAL JUDGEMENT.

TITLE:

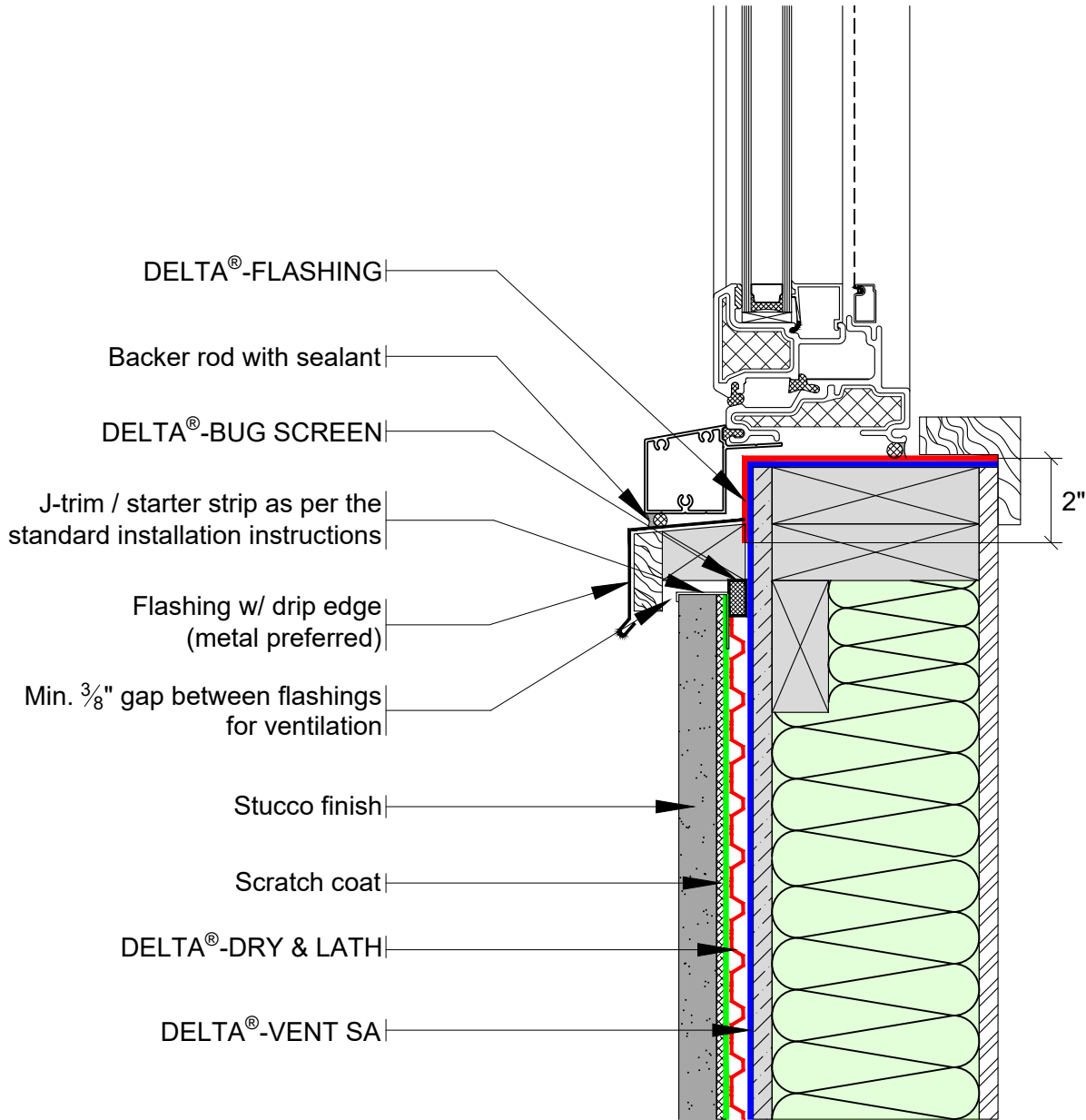
DELTA®-DRY & LATH TYPICAL BASE OF WALL AT FOUNDATION

DRAWN BY: Krzysztof Apriasz C. Tech. CPHC®

DÖRKEN

DELTA®

4655 DELTA WAY BEAMSVILLE, ON.
L3J 0T6 CANADA



For proper performance of DELTA®-DRY ensure top and bottom remain open to allow ventilation and drainage

SUBSTANTIAL EFFORT HAS BEEN MADE TO ENSURE THAT THE INFORMATION IN THIS DETAIL DRAWING IS ACCURATE. DÖRKEN SYSTEMS INC. CANNOT ACCEPT RESPONSIBILITY FOR ANY ERRORS OR OVERSIGHTS IN THE USE OF THIS MATERIAL OR IN THE PREPARATION OF ARCHITECTURAL OR ENGINEERING PLANS. THE DESIGN PROFESSIONAL MUST RECOGNIZE THAT NO DESIGN DETAIL CAN SUBSTITUTE FOR EXPERIENCED ENGINEERING AND PROFESSIONAL JUDGEMENT.

TITLE:

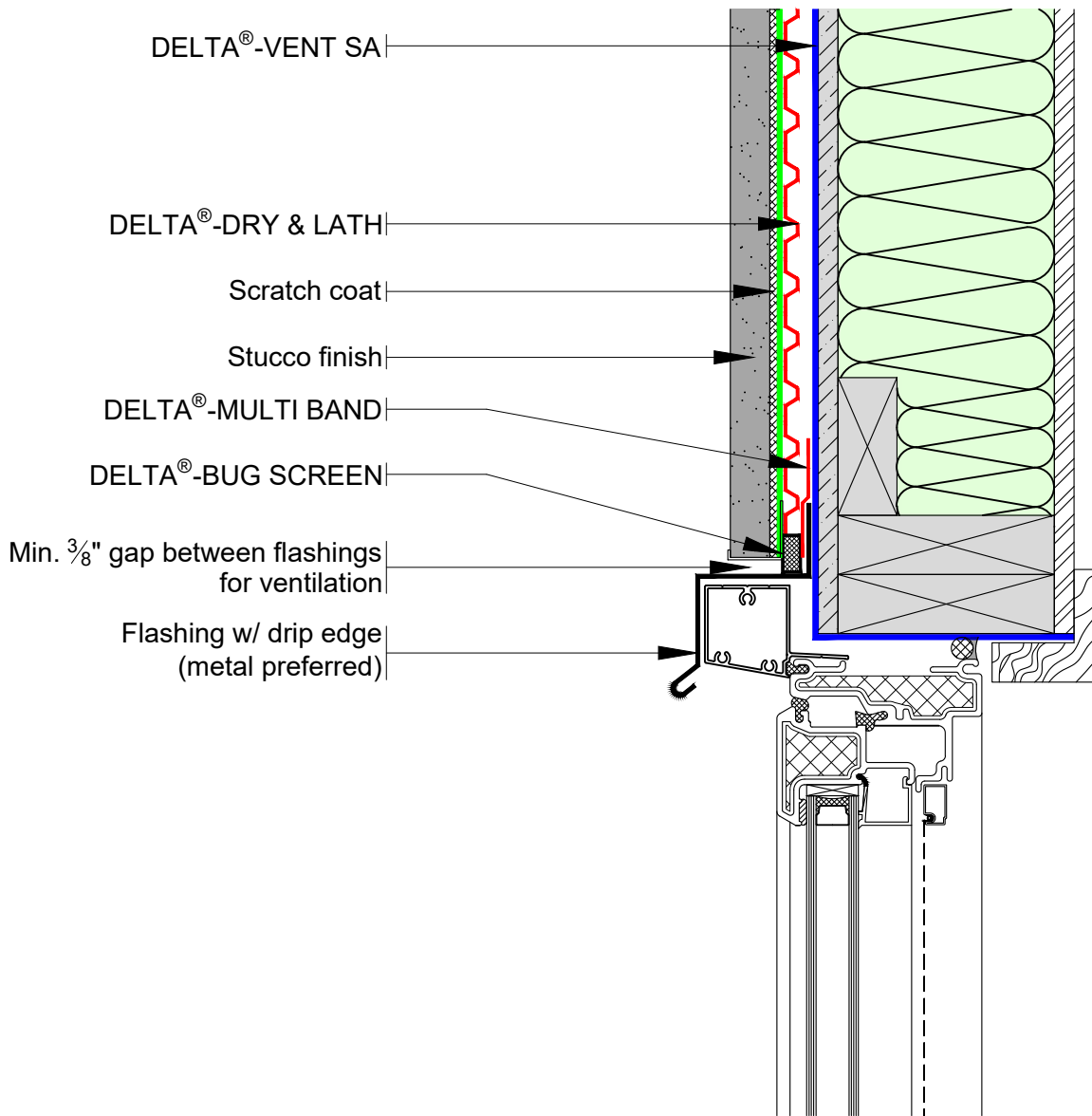
DELTA®-DRY & LATH TYPICAL WINDOW SILL DETAIL

DRAWN BY: Krzysztof Apiasz C. Tech. CPHC®

DÖRKEN

DELTA®

4655 DELTA WAY BEAMSVILLE, ON.
L3J 0T6 CANADA



For proper performance of DELTA®-DRY ensure top and bottom remain open to allow ventilation and drainage

SUBSTANTIAL EFFORT HAS BEEN MADE TO ENSURE THAT THE INFORMATION IN THIS DETAIL DRAWING IS ACCURATE. DÖRKEN SYSTEMS INC. CANNOT ACCEPT RESPONSIBILITY FOR ANY ERRORS OR OVERSIGHTS IN THE USE OF THIS MATERIAL OR IN THE PREPARATION OF ARCHITECTURAL OR ENGINEERING PLANS. THE DESIGN PROFESSIONAL MUST RECOGNIZE THAT NO DESIGN DETAIL CAN SUBSTITUTE FOR EXPERIENCED ENGINEERING AND PROFESSIONAL JUDGEMENT.

TITLE:

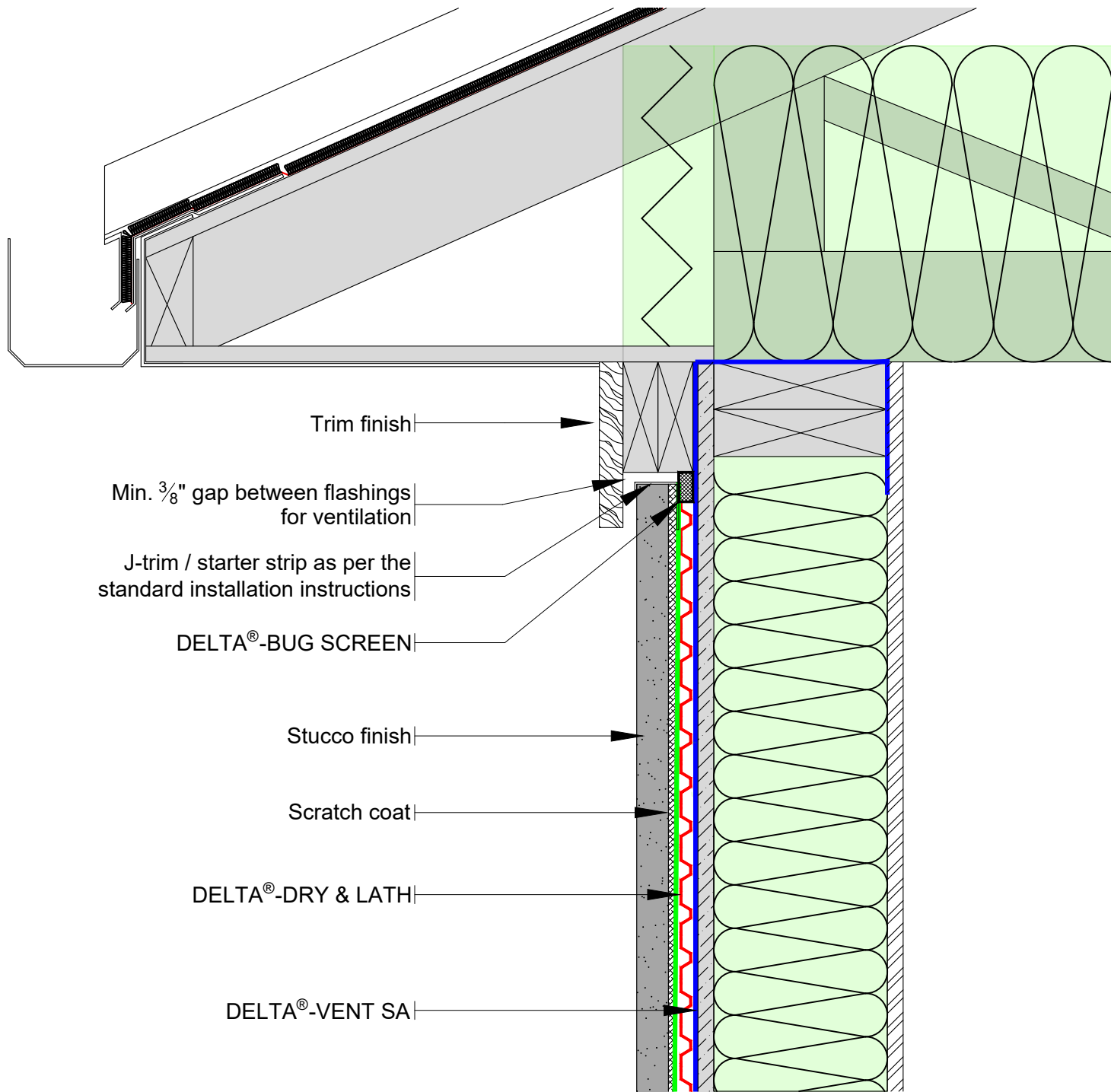
**DELTA®-DRY & LATH
TYPICAL WINDOW HEAD DETAIL**

DRAWN BY: Krzysztof Apiasz C. Tech. CPHC®

DÖRKEN

DELTA®

4655 DELTA WAY BEAMSVILLE, ON.
L3J 0T6 CANADA



For proper performance of DELTA[®]-DRY ensure top and bottom remain open to allow ventilation and drainage

SUBSTANTIAL EFFORT HAS BEEN MADE TO ENSURE THAT THE INFORMATION IN THIS DETAIL DRAWING IS ACCURATE. DÖRKEN SYSTEMS INC. CANNOT ACCEPT RESPONSIBILITY FOR ANY ERRORS OR OVERSIGHTS IN THE USE OF THIS MATERIAL OR IN THE PREPARATION OF ARCHITECTURAL OR ENGINEERING PLANS. THE DESIGN PROFESSIONAL MUST RECOGNIZE THAT NO DESIGN DETAIL CAN SUBSTITUTE FOR EXPERIENCED ENGINEERING AND PROFESSIONAL JUDGEMENT.

TITLE:

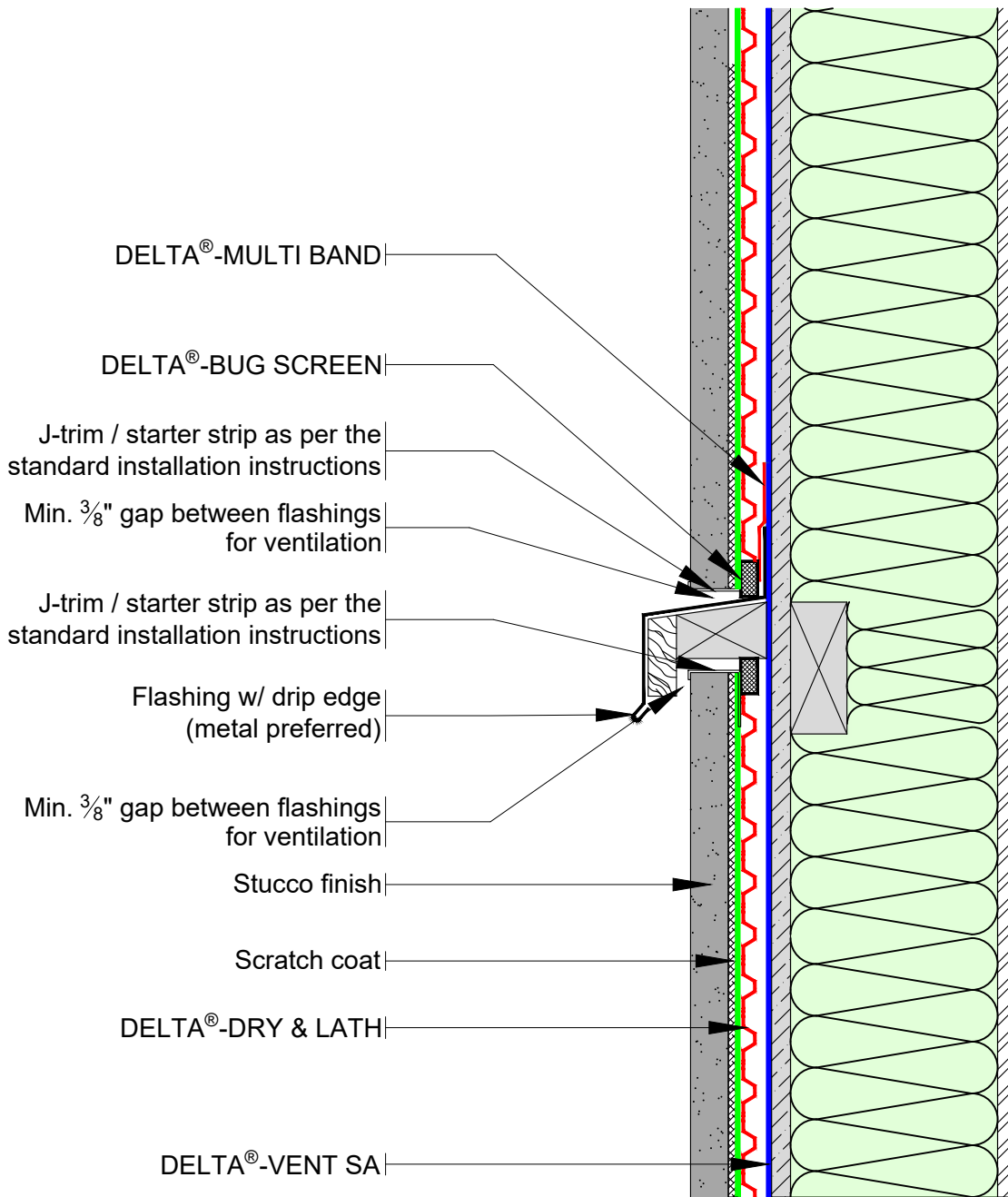
DELTA[®]-DRY & LATH TOP OF WALL DETAIL

DRAWN BY: Krzysztof Apriasz C. Tech. CPHC[®]

DÖRKEN

DELTA[®]

4655 DELTA WAY BEAMSVILLE, ON.
L3J 0T6 CANADA



For proper performance of DELTA®-DRY ensure top and bottom remain open to allow ventilation and drainage

SUBSTANTIAL EFFORT HAS BEEN MADE TO ENSURE THAT THE INFORMATION IN THIS DETAIL DRAWING IS ACCURATE. DÖRKEN SYSTEMS INC. CANNOT ACCEPT RESPONSIBILITY FOR ANY ERRORS OR OVERSIGHTS IN THE USE OF THIS MATERIAL OR IN THE PREPARATION OF ARCHITECTURAL OR ENGINEERING PLANS. THE DESIGN PROFESSIONAL MUST RECOGNIZE THAT NO DESIGN DETAIL CAN SUBSTITUTE FOR EXPERIENCED ENGINEERING AND PROFESSIONAL JUDGEMENT.

TITLE:

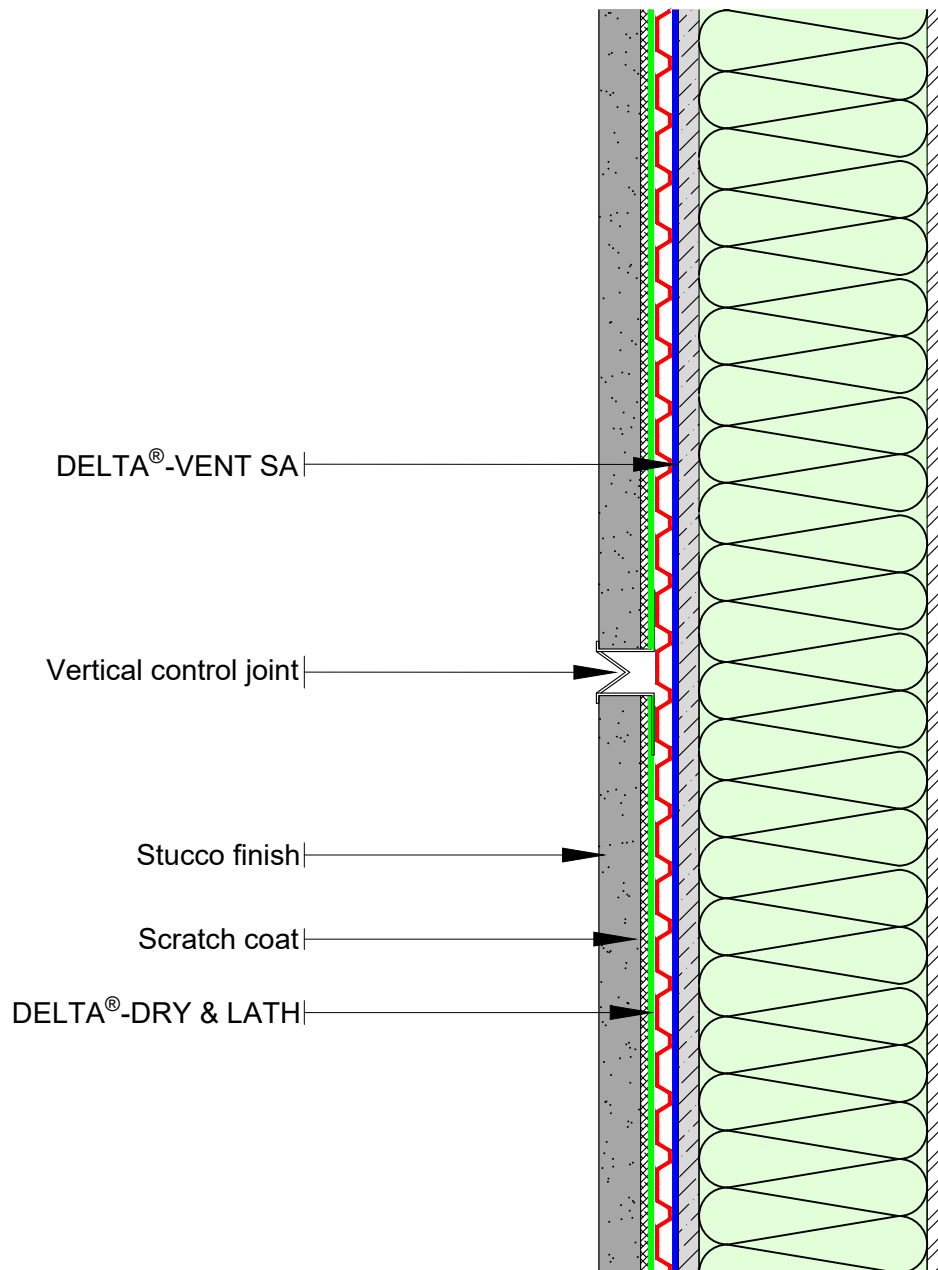
DELTA®-DRY & LATH TYPICAL TRANSITION DETAIL

DRAWN BY: Krzysztof Apiasz C. Tech. CPHC®

DÖRKEN

DELTA®

4655 DELTA WAY BEAMSVILLE, ON.
L3J 0T6 CANADA



For proper performance of DELTA®-DRY ensure top and bottom remain open to allow ventilation and drainage

SUBSTANTIAL EFFORT HAS BEEN MADE TO ENSURE THAT THE INFORMATION IN THIS DETAIL DRAWING IS ACCURATE. DÖRKEN SYSTEMS INC. CANNOT ACCEPT RESPONSIBILITY FOR ANY ERRORS OR OVERSIGHTS IN THE USE OF THIS MATERIAL OR IN THE PREPARATION OF ARCHITECTURAL OR ENGINEERING PLANS. THE DESIGN PROFESSIONAL MUST RECOGNIZE THAT NO DESIGN DETAIL CAN SUBSTITUTE FOR EXPERIENCED ENGINEERING AND PROFESSIONAL JUDGEMENT.

TITLE:

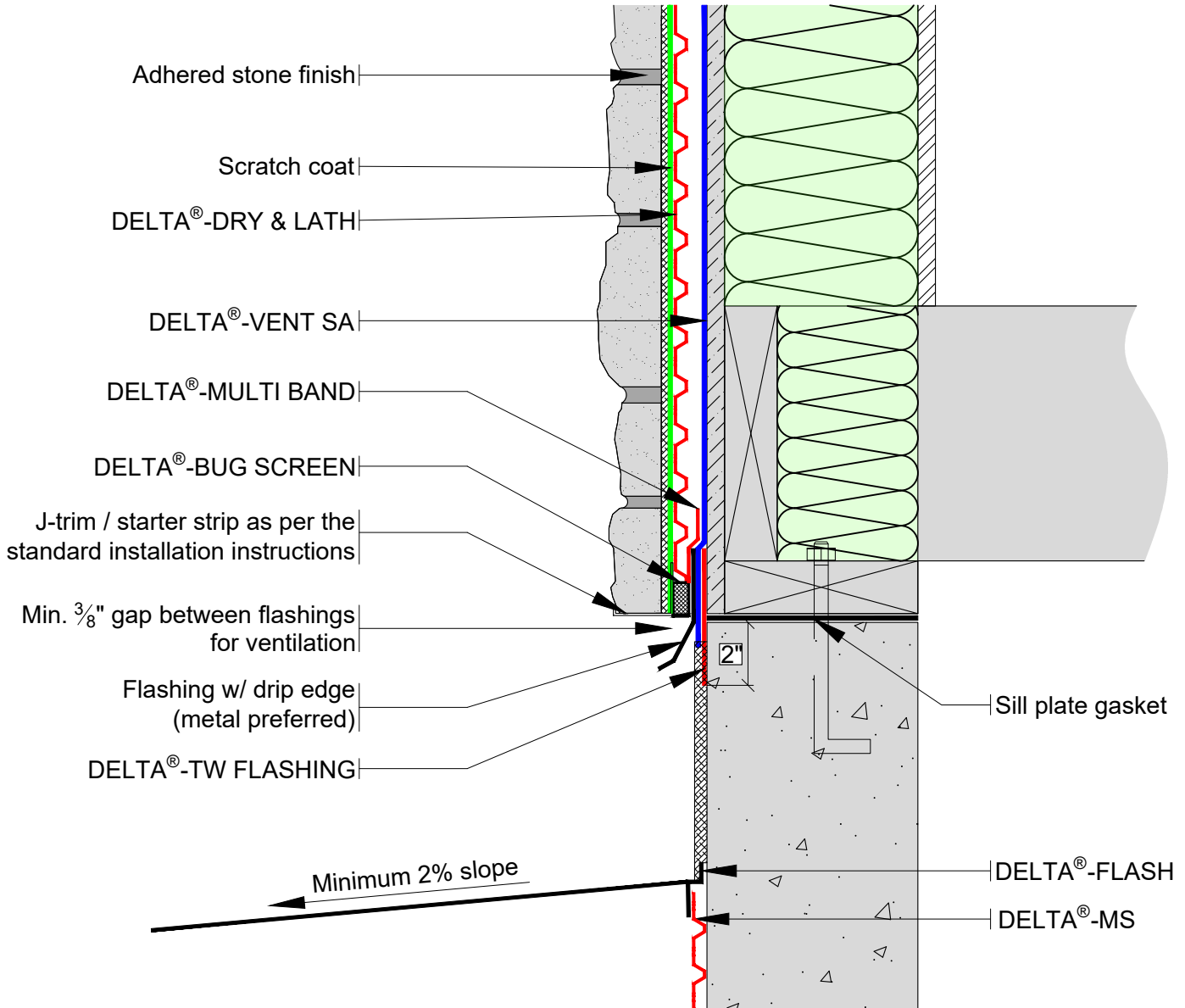
DELTA®-DRY & LATH TYPICAL VERTICAL CONTROL JOINT

DRAWN BY: Krzysztof Apriasz C. Tech. CPHC®

 **DÖRKEN**

DELTA®

4655 DELTA WAY BEAMSVILLE, ON.
L3J 0T6 CANADA



For proper performance of DELTA®-DRY ensure top and bottom remain open to allow ventilation and drainage

SUBSTANTIAL EFFORT HAS BEEN MADE TO ENSURE THAT THE INFORMATION IN THIS DETAIL DRAWING IS ACCURATE. DÖRKEN SYSTEMS INC. CANNOT ACCEPT RESPONSIBILITY FOR ANY ERRORS OR OVERSIGHTS IN THE USE OF THIS MATERIAL OR IN THE PREPARATION OF ARCHITECTURAL OR ENGINEERING PLANS. THE DESIGN PROFESSIONAL MUST RECOGNIZE THAT NO DESIGN DETAIL CAN SUBSTITUTE FOR EXPERIENCED ENGINEERING AND PROFESSIONAL JUDGEMENT.

TITLE:

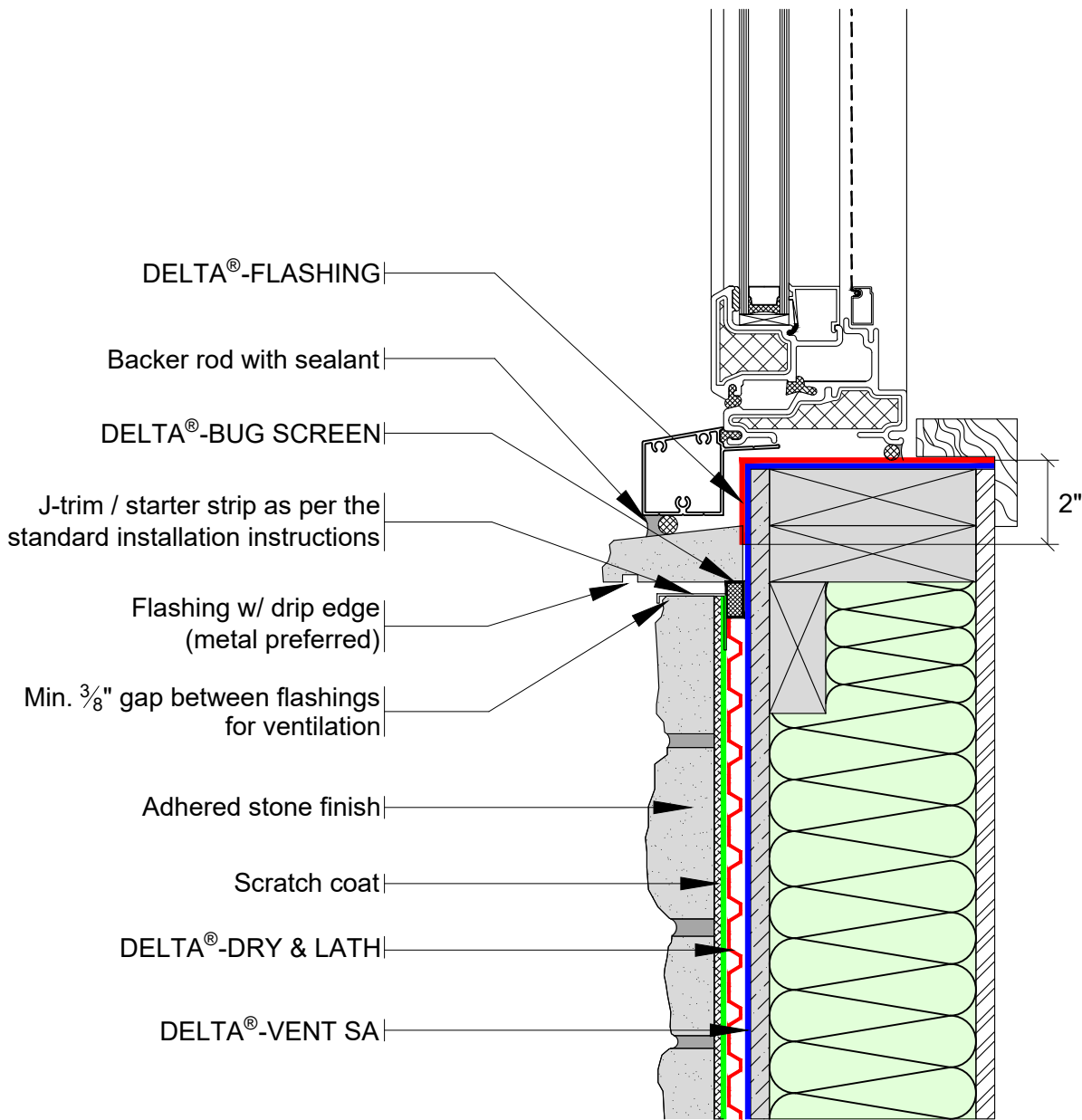
DELTA®-DRY & LATH TYPICAL BASE OF WALL AT FOUNDATION

DRAWN BY: Krzysztof Apiasz C. Tech. CPHC®

DÖRKEN

DELTA®

4655 DELTA WAY BEAMSVILLE, ON.
L3J 0T6 CANADA



For proper performance of DELTA®-DRY ensure top and bottom remain open to allow ventilation and drainage

SUBSTANTIAL EFFORT HAS BEEN MADE TO ENSURE THAT THE INFORMATION IN THIS DETAIL DRAWING IS ACCURATE. DÖRKEN SYSTEMS INC. CANNOT ACCEPT RESPONSIBILITY FOR ANY ERRORS OR OVERSIGHTS IN THE USE OF THIS MATERIAL OR IN THE PREPARATION OF ARCHITECTURAL OR ENGINEERING PLANS. THE DESIGN PROFESSIONAL MUST RECOGNIZE THAT NO DESIGN DETAIL CAN SUBSTITUTE FOR EXPERIENCED ENGINEERING AND PROFESSIONAL JUDGEMENT.

TITLE:

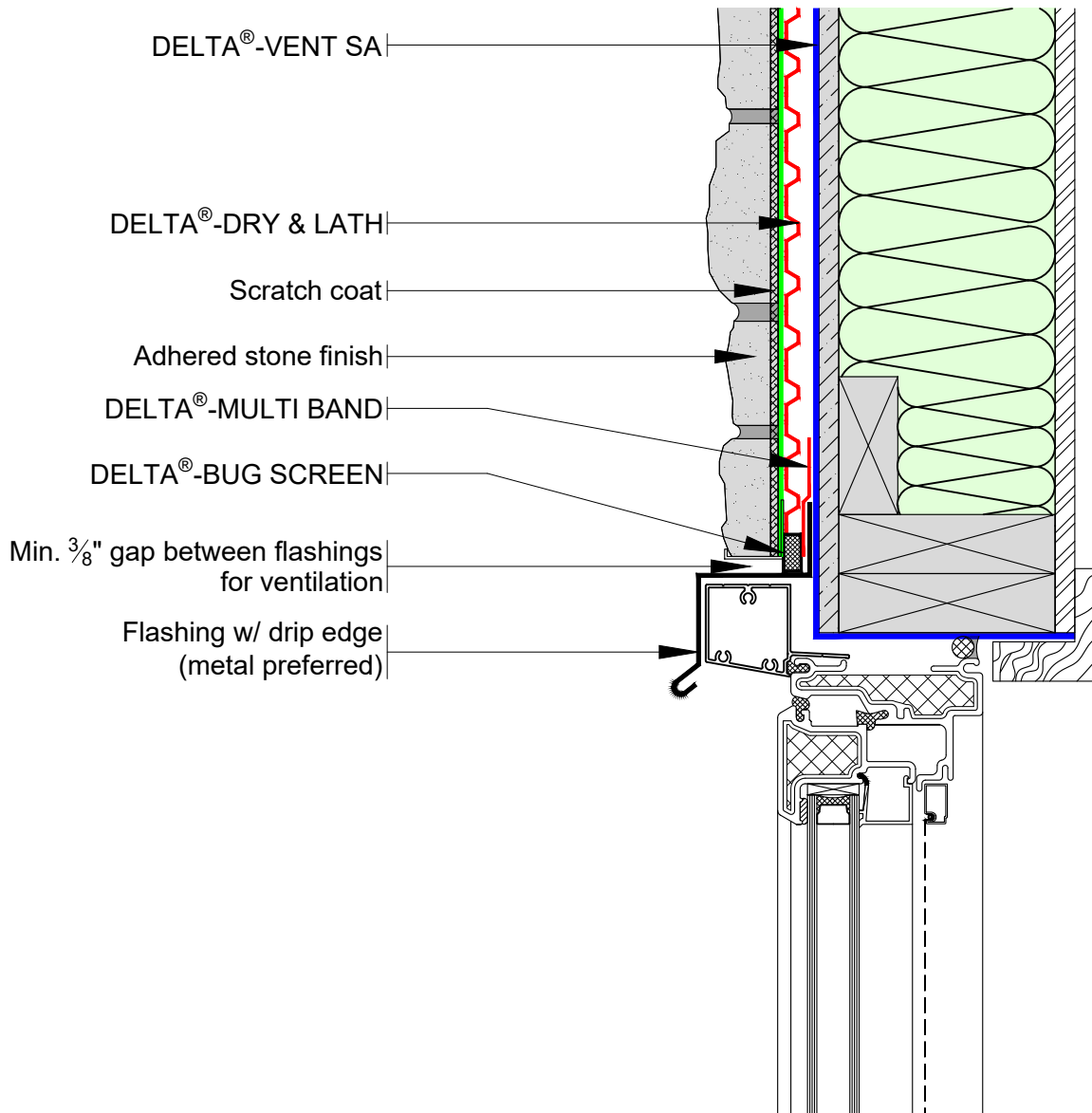
DELTA®-DRY & LATH TYPICAL WINDOW SILL DETAIL

DRAWN BY: Krzysztof Apriasz C. Tech. CPHC®

DÖRKEN

DELTA®

4655 DELTA WAY BEAMSVILLE, ON.
L3J 0T6 CANADA



For proper performance of DELTA®-DRY ensure top and bottom remain open to allow ventilation and drainage

SUBSTANTIAL EFFORT HAS BEEN MADE TO ENSURE THAT THE INFORMATION IN THIS DETAIL DRAWING IS ACCURATE. DÖRKEN SYSTEMS INC. CANNOT ACCEPT RESPONSIBILITY FOR ANY ERRORS OR OVERSIGHTS IN THE USE OF THIS MATERIAL OR IN THE PREPARATION OF ARCHITECTURAL OR ENGINEERING PLANS. THE DESIGN PROFESSIONAL MUST RECOGNIZE THAT NO DESIGN DETAIL CAN SUBSTITUTE FOR EXPERIENCED ENGINEERING AND PROFESSIONAL JUDGEMENT.

TITLE:

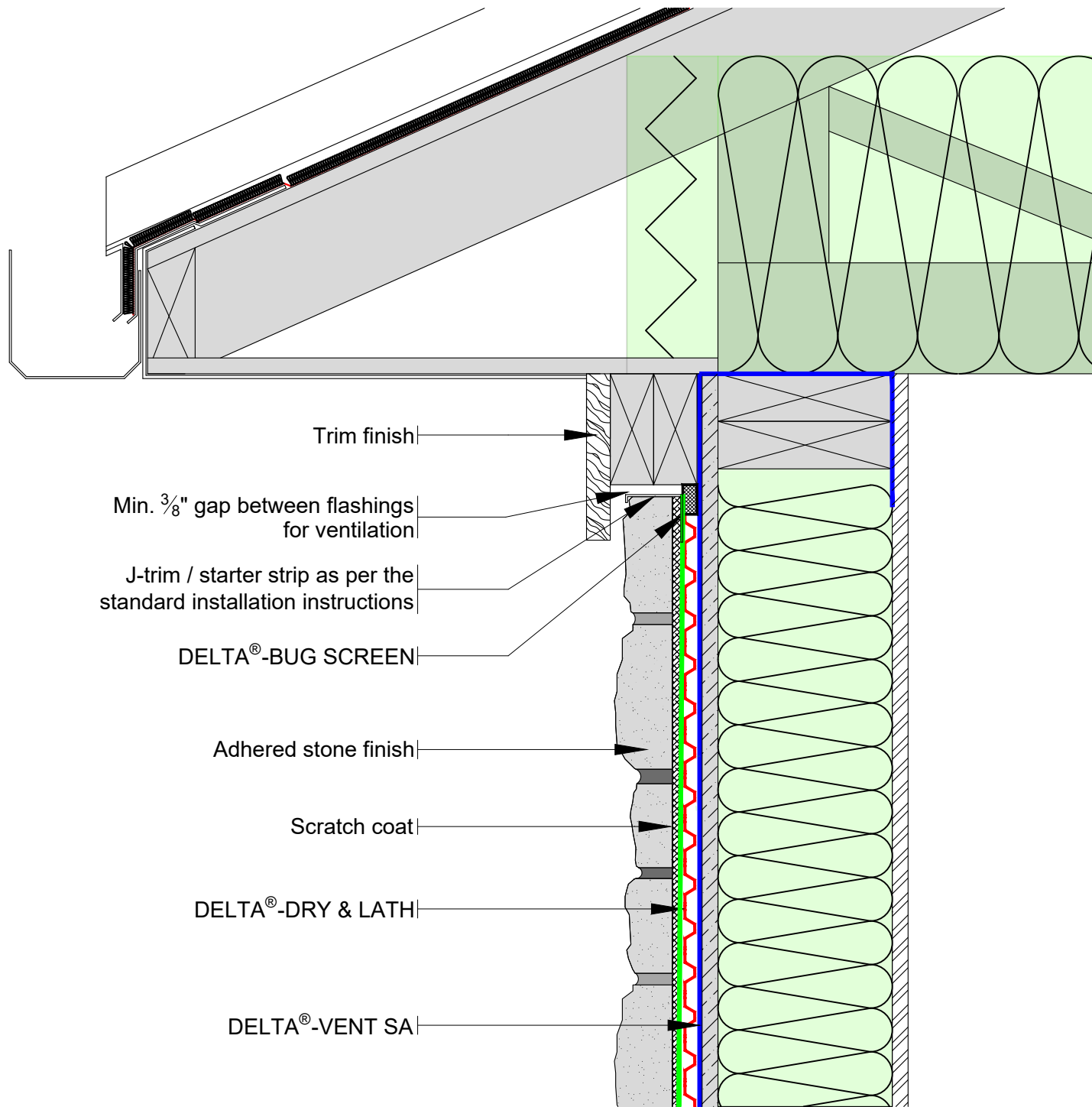
**DELTA®-DRY & LATH
 TYPICAL WINDOW HEAD DETAIL**

DRAWN BY: Krzysztof Apriasz C. Tech. CPHC®

DÖRKEN

DELTA®

4655 DELTA WAY BEAMSVILLE, ON.
 L3J 0T6 CANADA



For proper performance of DELTA[®]-DRY ensure top and bottom remain open to allow ventilation and drainage

SUBSTANTIAL EFFORT HAS BEEN MADE TO ENSURE THAT THE INFORMATION IN THIS DETAIL DRAWING IS ACCURATE. DÖRKEN SYSTEMS INC. CANNOT ACCEPT RESPONSIBILITY FOR ANY ERRORS OR OVERSIGHTS IN THE USE OF THIS MATERIAL OR IN THE PREPARATION OF ARCHITECTURAL OR ENGINEERING PLANS. THE DESIGN PROFESSIONAL MUST RECOGNIZE THAT NO DESIGN DETAIL CAN SUBSTITUTE FOR EXPERIENCED ENGINEERING AND PROFESSIONAL JUDGEMENT.

TITLE:

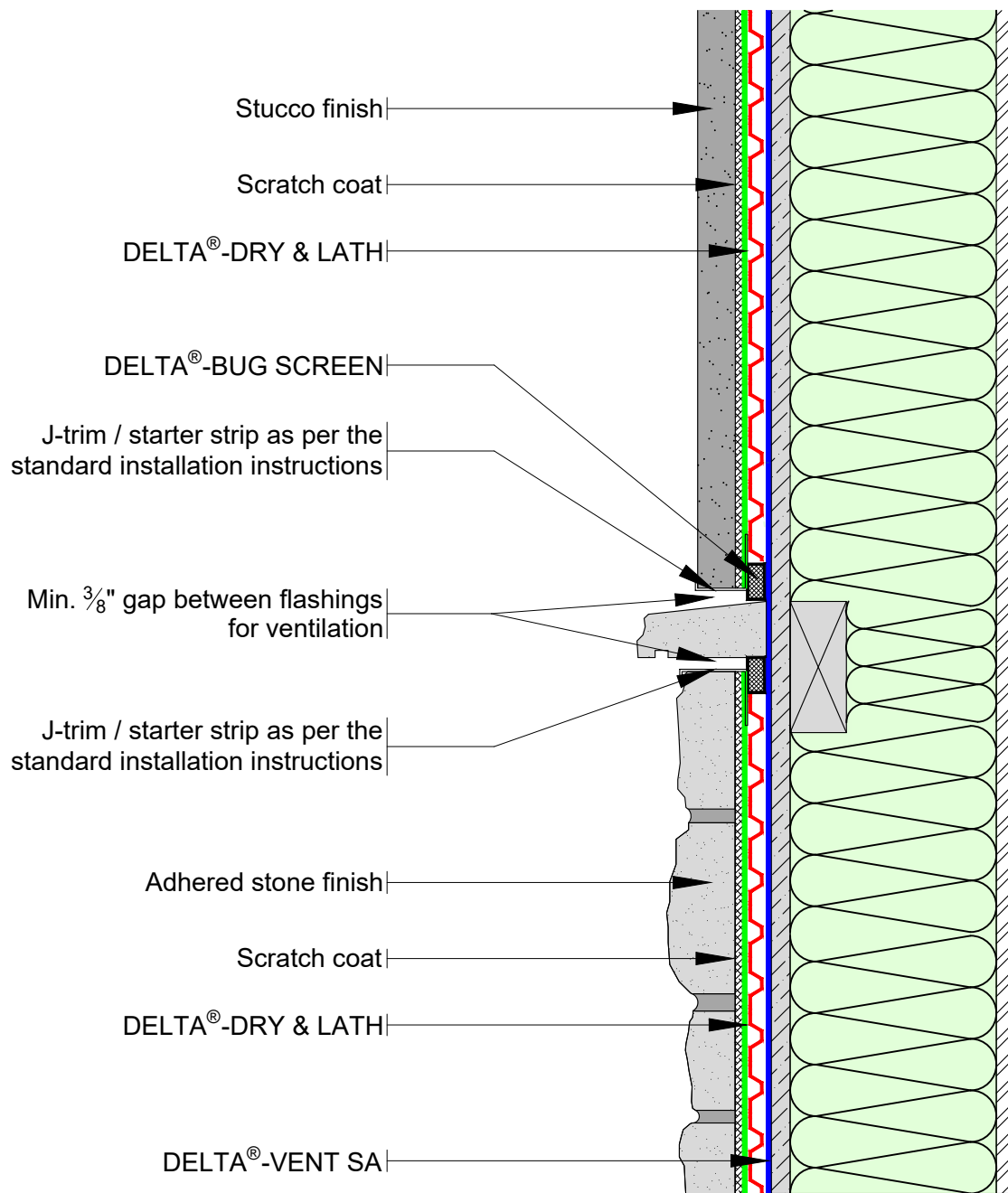
DELTA[®]-DRY & LATH TOP OF WALL DETAIL

DRAWN BY: Krzysztof Apriasz C. Tech. CPHC[®]

DÖRKEN

DELTA[®]

4655 DELTA WAY BEAMSVILLE, ON.
L3J 0T6 CANADA



For proper performance of DELTA®-DRY ensure top and bottom remain open to allow ventilation and drainage

SUBSTANTIAL EFFORT HAS BEEN MADE TO ENSURE THAT THE INFORMATION IN THIS DETAIL DRAWING IS ACCURATE. DÖRKEN SYSTEMS INC. CANNOT ACCEPT RESPONSIBILITY FOR ANY ERRORS OR OVERSIGHTS IN THE USE OF THIS MATERIAL OR IN THE PREPARATION OF ARCHITECTURAL OR ENGINEERING PLANS. THE DESIGN PROFESSIONAL MUST RECOGNIZE THAT NO DESIGN DETAIL CAN SUBSTITUTE FOR EXPERIENCED ENGINEERING AND PROFESSIONAL JUDGEMENT.

TITLE:

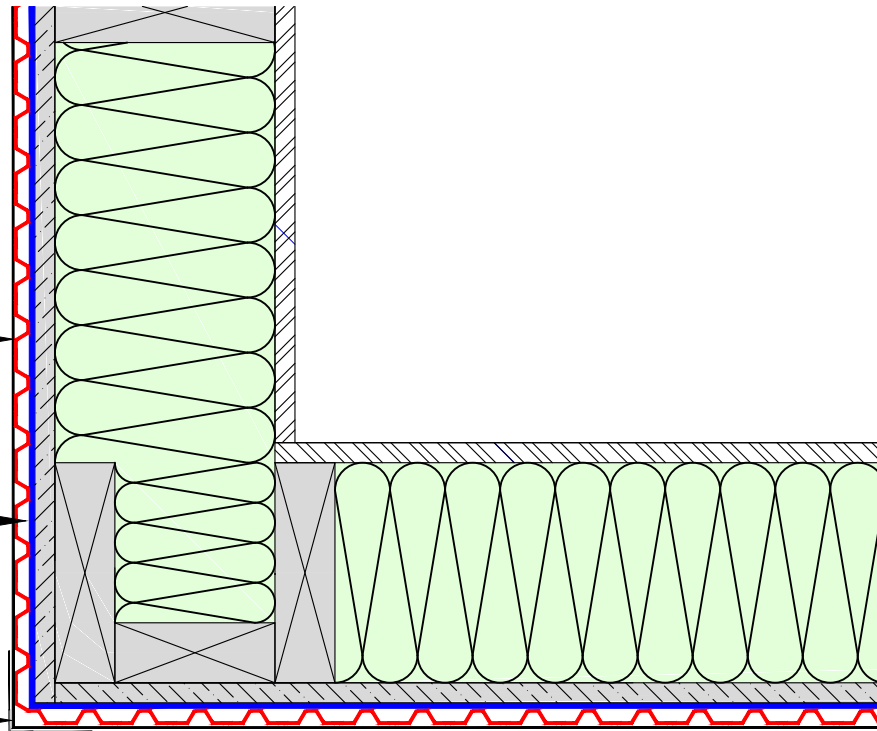
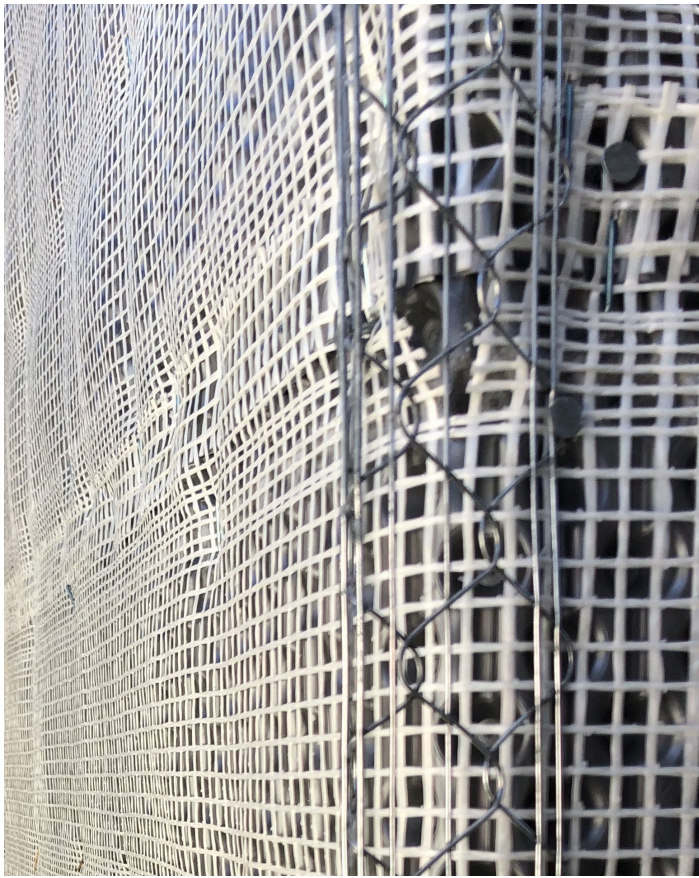
DELTA®-DRY & LATH
TYPICAL TRANSITION DETAIL

DRAWN BY: Krzysztof Apiasz C. Tech. CPHC®

DÖRKEN

DELTA®

4655 DELTA WAY BEAMSVILLE, ON.
L3J 0T6 CANADA



DELTA®-DRY & LATH

DELTA®-VENT SA

Typical stucco corner bead on top of DELTA®-DRY & LATH

Note: Stucco Finish not show for clarity

For proper performance of DELTA®-DRY ensure top and bottom remain open to allow ventilation and drainage

SUBSTANTIAL EFFORT HAS BEEN MADE TO ENSURE THAT THE INFORMATION IN THIS DETAIL DRAWING IS ACCURATE. DÖRKEN SYSTEMS INC. CANNOT ACCEPT RESPONSIBILITY FOR ANY ERRORS OR OVERSIGHTS IN THE USE OF THIS MATERIAL OR IN THE PREPARATION OF ARCHITECTURAL OR ENGINEERING PLANS. THE DESIGN PROFESSIONAL MUST RECOGNIZE THAT NO DESIGN DETAIL CAN SUBSTITUTE FOR EXPERIENCED ENGINEERING AND PROFESSIONAL JUDGEMENT.

TITLE:

DELTA®-DRY & LATH CORNER
DETAIL WITH STUCCO TYPICAL
CORNER BEAD

DRAWN BY: Krzysztof Apriasz C. Tech. CPHC®
January 2021

 DÖRKEN



4655 DELTA WAY BEAMSVILLE, ON. L0R 1B4 CANADA
1-888-433-5824 or 1-905-563-3255