



Project Profile SPA BALNEA – Quebec, Canada

DELTA®-FASSADE S – Design with open joints



→ General Information

Building Name	SPA BALNEA
Building Location	Bromont-sur-le-lac, Quebec
Country	Canada
Project Size	2300 ft ² + basement
Building Type	Commercial
Project Type	New Construction/Addition
Type of cladding	Ipé wood with Cedar furring strips painted black
Total Building Costs	\$1.2 mill. (incl. exterior landscaping and extension of existing building)
Owner	SPA BALNEA (Denis Laframboise, Stéphanie Emond)
Architect	BLOUIN TARDIF Architecture - Environnement
Contractor	Construction des Sommets
Year	2013

→ Project Description

On BALNEA SPA, DELTA®-FASSADE S was used by BLOUIN TARDIF Architecture - Environnement to add depth of beauty and superior performance to the building enclosure. The BALNEA SPA is located in the heart of the Eastern Townships, perched on a hillside in a private nature reserve overlooking Lake Gale. About an hour away from busy Montreal, 10 minutes from the ski resort of Bromont, you can find peace in this beautiful spa

with Finnish saunas, a Turkish bath, outdoor hot tubs, a lake, slow food, and resting areas with fire places. In addition to all this splendor, you can choose from a large variety of massages, yoga and assorted treatments. The facilities are housed in the original, old-fashioned building with thick stone walls that were built in the 1970's and the principal spa building, which was built in 2005.

The owner was looking for a functional, inviting new building to be a complement to the immer-

sive spa experience as well as a connection between the two existing structures. And at the same time, it should meld with the surrounding forest. BLOUIN TARDIF's answer was a centrally located minimalist pavilion on stilts. The open joint wood cladding and wooden walkways integrate the building into the landscape in a contemporary style. It houses the reception area of the spa as well as the offices, creating more space for the spa and treatments in the principal building.



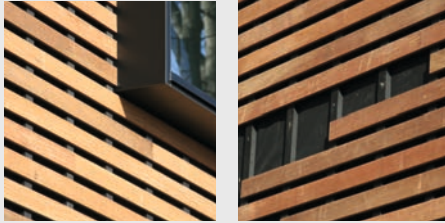
Walkway connecting the buildings



Tranquil approach to main entrance

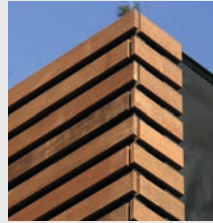
→ Challenges

Since the spa was to remain open during construction, and peace and quiet is an essential part of the spa experience, BLOUIN TARDIF developed a wooden structure, which was preassembled by Bonneville Homes. It was delivered to the site and installed on triangular metal stilts. This way, disturbances were kept to a minimum.



open-joint cladding. Because it is also a very dense wood, its weight was taken into consideration in the construction. The ipé cladding was installed horizontally on vertical cedar furring strips for additional durability. In order to keep the floating look, the furring strips were painted black.

Because the ipé will undergo some shrinkage after a couple of years, the corner detail required special consideration. The designers chose a gap instead of connected corners that would become undone over time. The contractor meticulously ensured precise and detailed finishing.



coating, ideal protection from the harsh sun to which it will be permanently exposed. Because DELTA®-FASSADE S is water tight and very vapor permeable, precipitation will stay out while allowing internal moisture to escape. Under the open joint cladding, DELTA®-FASSADE S will let humidity evaporate out of the structure while resisting rain and snow. DELTA®-FASSADE S, along with the associated accessories, is plain black with no printing. It will blend into the structure, giving the sought-after floating effect and a desirable 3-D look.

DELTA®-FASSADE S provides the most durable and long lasting protection that brings aesthetic visions to life.

→ Other DELTA®-FASSADE S Projects

The architects at BLOUIN TARDIF Architecture - Environnement spent a great amount of time on the development of the exterior. They wanted to create a cladding that appeared to be floating. For durability purposes, ipé, a very hard hardwood from the Brazilian rainforests, was chosen for the

With this type of cladding system, the structure underneath is much more exposed to the weather (and to the eye) than with a regular closed cladding system. For this reason BLOUIN TARDIF chose DELTA®-FASSADE S as the water-resistant barrier. DELTA®-FASSADE S has a black and UV resistant

- 2013 – Lac Grenier Residence in Estérel, Quebec, Canada
- 2013 – Brescia College in London, Ontario, Canada
- 2013 – University of Oregon, Collaborative Life Science Building in Portland, Oregon, USA



Installation of cedar furring strips over DELTA®-FASSADE S

